

Catalog #: 4515

Aliases

ACBD3; Acyl-CoA Binding Domain Containing 3; GCP60; PBR- And PKA-Associated Protein 7; GOCAP1; GOLPH1; PAP7; Peripheral Benzodiazepine Receptor-Associated Protein PAP7; Acyl-Coenzyme A Binding Domain Containing 3; Golgi Complex Associated Protein 1, 60kDa; Golgi Resident Protein GCP60; Golgi Phosphoprotein 1; Acyl-CoA-Binding Domain-Containing Protein; Golgi Complex-Associated Protein 1; PKA (RIalpha)-Associated Protein

Background

Gene Name: ACBD3

NCBI Gene Entry: [64746](#)

UniProt Entry: [Q9H3P7](#)

Application Information

Molecular Weight: Predicted, 60 kDa; observed, 70 kDa

Clonality: Rabbit monoclonal antibody

Clone ID: 24GB11605

Species Reactivity: Human, mouse

Applications Tested: Western blotting (WB), flow cytometry (FCM), immunocytochemistry (IC)

Immunogen

A synthesized peptide derived from human ACBD3

Isotype

Rabbit IgG

Storage Buffer

Supplied in PBS (pH 7.4) containing 50% glycerol, and 0.02% sodium azide.

Storage

Store at -20 °C for one year.

Recommended Dilutions

Western Blotting (WB): 1:1,000-1:5,000

Flow Cytometry (FCM): 1:2,000

Immunocytochemistry (IC): 1:100-1:1,000

SUPPORT

SUPPORT@GENUINBIOTECH.COM
TEL: +1-540-855-7041

ORDERS

SALES@GENUINBIOTECH.COM
FAX: +1-540-855-7041

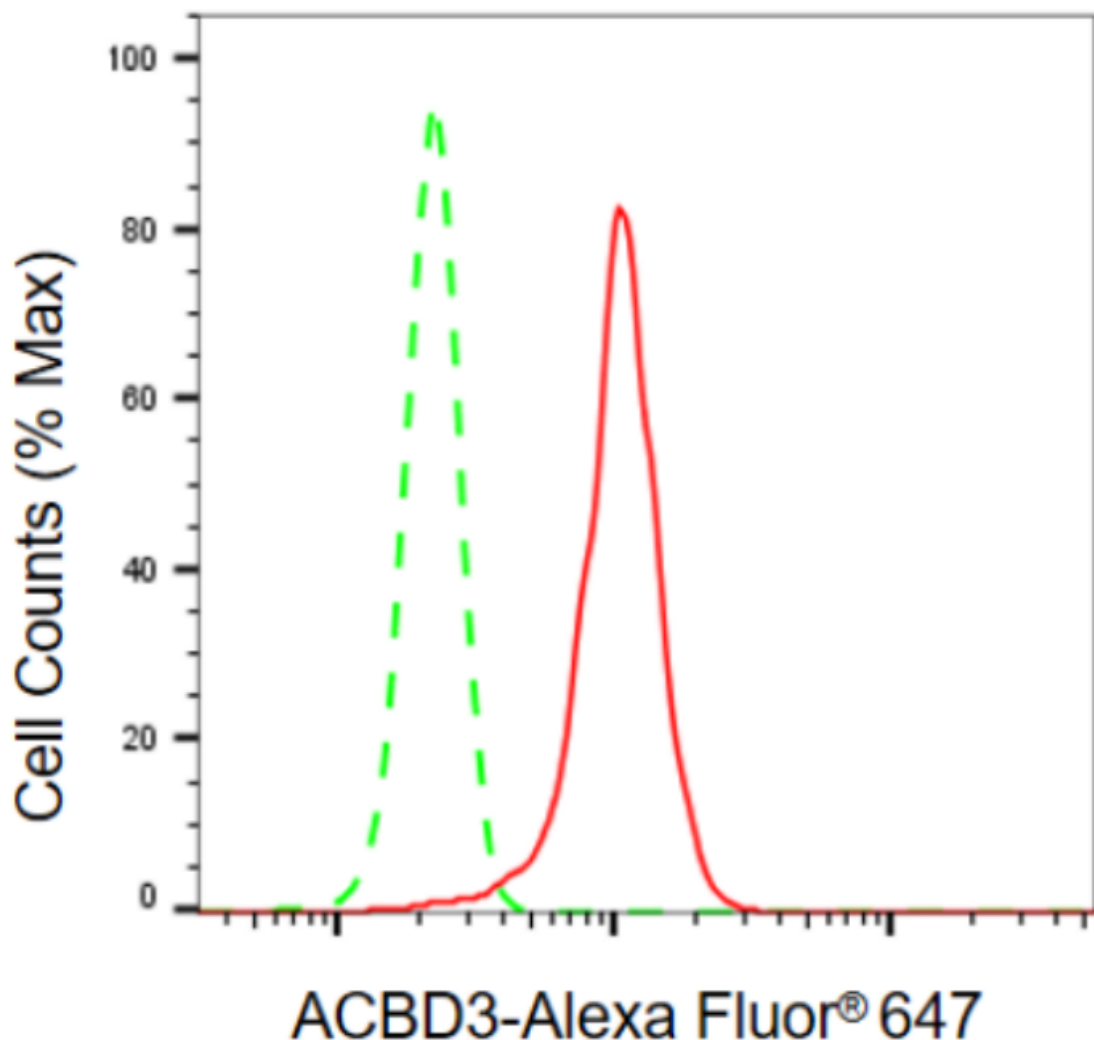
WWW.GENUINBIOTECH.COM

Anti-ACBD3 Recombinant Rabbit Monoclonal Antibody

PAGE 2

Note: This product is for research use only.

Validation Data



Copyright ©2024 Genuin Biotechnologies LLC

Flow cytometric analysis of ACBD3 expression in HeLa cells using anti-ACBD3 antibody (Cat#4515, 1:2,000). Green, isotype control; red, ACBD3.

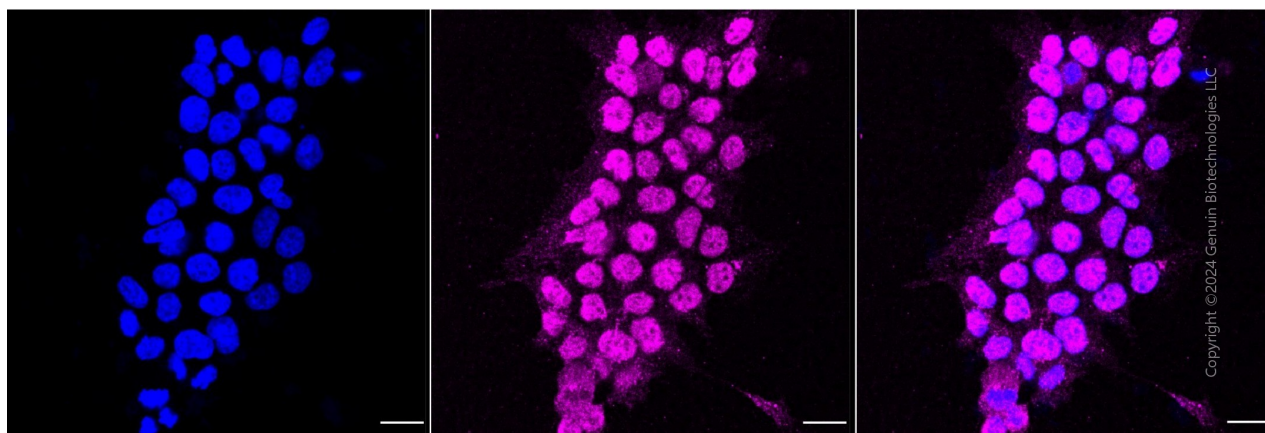
SUPPORT

SUPPORT@GENUINBIOTECH.COM
TEL: +1-540-855-7041

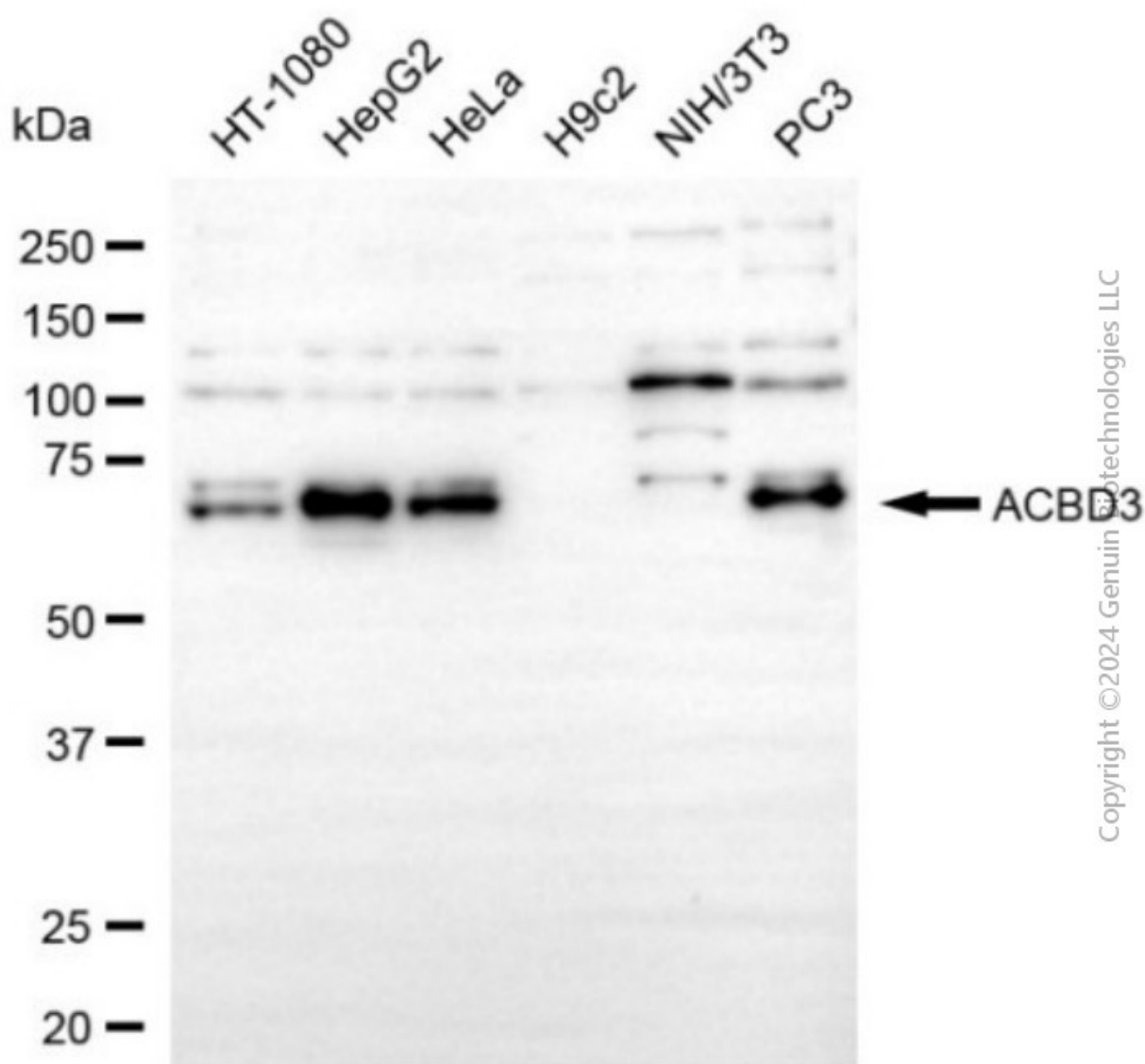
ORDERS

SALES@GENUINBIOTECH.COM
FAX: +1-540-855-7041

WWW.GENUINBIOTECH.COM



Immunocytochemical staining of HeLa cells with anti-ACBD3 antibody (Cat#4515, 1:1,000) . Nuclei were stained blue with DAPI; ACBD3 was stained magenta with Alexa Fluor® 647. Images were taken using Leica stellaris 5. Protein abundance based on laser Intensity and smart gain: Medium. Scale bar, 20 μ m.



Western blotting analysis using anti-ACBD3 antibody (Cat#4515). Total cell lysates (30 μ g) from various cell lines were loaded and separated by SDS-PAGE. The blot was incubated with anti-ACBD3 antibody (Cat#4515, 1:5,000) and HRP-conjugated goat anti-rabbit secondary antibody (Cat#201, 1:20,000) respectively. Image was developed using FeQ™ ECL Substrate Kit (Cat#226).