

Anti-Ephrin A1 Recombinant Rabbit Monoclonal Antibody



Catalog #: 4521

Aliases

EFNA1; Ephrin A1; LERK1; Ephrin-A1; TNFAIP4; ECKLG; EPLG1; GMAN ; Gastric Cancer Metastasis Associated Long Noncoding RNA; EPH-Related Receptor Tyrosine Kinase Ligand 1; Tumor Necrosis Factor Alpha-Induced Protein 4; Immediate Early Response Protein B61; TNF Alpha-Induced Protein 4; LERK-1; Tumor Necrosis Factor, Alpha-Induced Protein 4; Eph-Related Receptor Tyrosine Kinase Ligand 1; Epididymis Secretory Sperm Binding Protein; Ligand Of Eph-Related Kinase 1; EFL1; B61

Background

Gene Name: EFNA1

NCBI Gene Entry: [1942](#)

UniProt Entry: [P20827](#)

Application Information

Molecular Weight: Predicted, 24 kDa; observed, 24 kDa

Clonality: Rabbit monoclonal antibody

Clone ID: 24GB11635

Species Reactivity: Human

Applications Tested: Western blotting (WB)

Immunogen

A synthesized peptide derived from human Ephrin A1

Isotype

Rabbit IgG

Storage Buffer

Supplied in PBS (pH 7.4) containing 50% glycerol, and 0.02% sodium azide.

Storage

Store at -20 °C for one year.

Recommended Dilutions

Western blotting (WB): 1:1,000-1:5,000

SUPPORT

SUPPORT@GENUINBIOTECH.COM
TEL: +1-540-855-7041

ORDERS

SALES@GENUINBIOTECH.COM
FAX: +1-540-855-7041

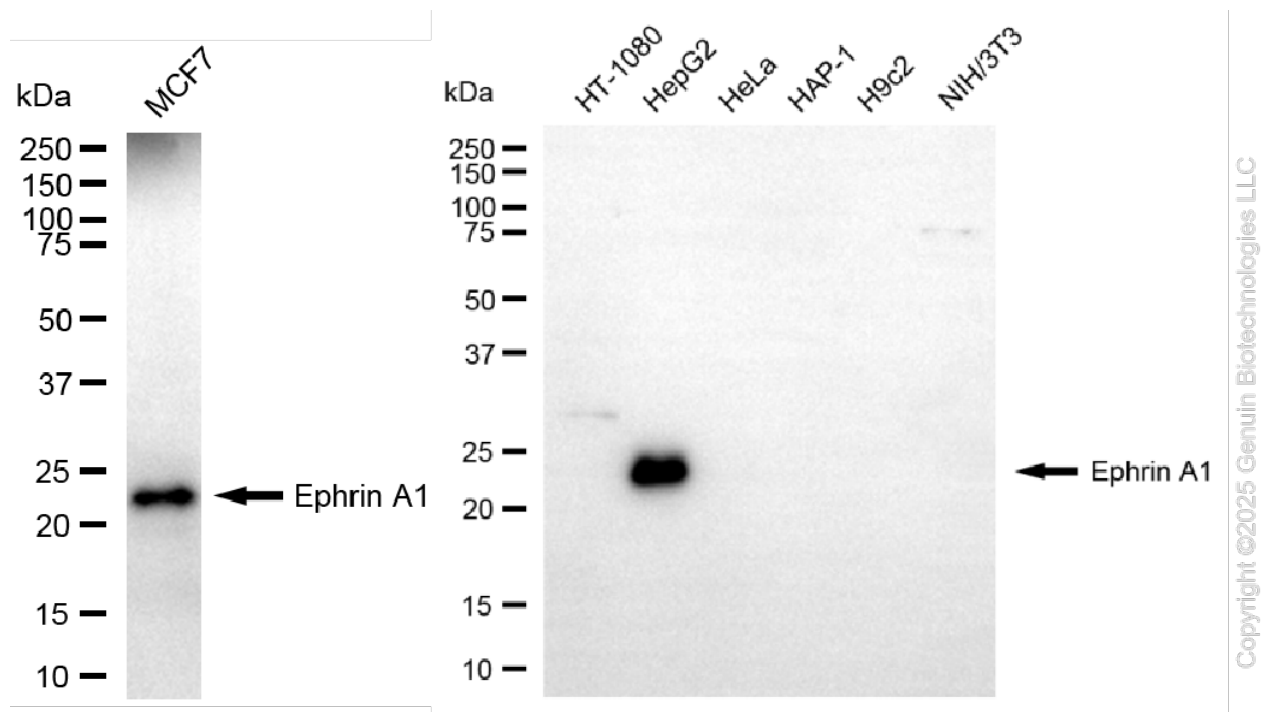
WWW.GENUINBIOTECH.COM

Anti-Ephrin A1 Recombinant Rabbit Monoclonal Antibody

PAGE 2

Note: This product is for research use only.

Validation Data



Western blotting analysis using anti-ephrin A1 antibody (Cat#4521). Total cell lysates (30 µg) from various cell lines were loaded and separated by SDS-PAGE. The blot was incubated with anti-ephrin A1 antibody (Cat#4521, 1:5,000) and HRP-conjugated goat anti-rabbit secondary antibody (Cat#201, 1:20,000) respectively. Image was developed using FeQ™ ECL Substrate Kit (Cat#226).

SUPPORT

SUPPORT@GENUINBIOTECH.COM
TEL: +1-540-855-7041

ORDERS

SALES@GENUINBIOTECH.COM
FAX: +1-540-855-7041

WWW.GENUINBIOTECH.COM