

# Anti-CD163 Recombinant Rabbit Monoclonal Antibody



**Catalog #: 4522**

## Aliases

CD163; CD163 Molecule; M130; SCAR1; MM130; Scavenger Receptor Cysteine-Rich Type 1 Protein M130; Hemoglobin Scavenger Receptor; CD163 Antigen; Macrophage-Associated Antigen

## Background

Gene Name: CD163

NCBI Gene Entry: [9332](#)

UniProt Entry: [Q86VB7](#)

## Application Information

Molecular Weight: Predicted, 125 kDa; observed, 125 kDa

Clonality: Rabbit monoclonal antibody

Clone ID: 24GB11640

Species Reactivity: Human, mouse, rat

Applications Tested: Western blotting (WB), immunocytochemistry (IC)

## Immunogen

A synthesized peptide derived from human CD163

## Isotype

Rabbit IgG

## Storage Buffer

Supplied in PBS (pH 7.4) containing 50% glycerol, and 0.02% sodium azide.

## Storage

Store at -20 °C for one year.

## Recommended Dilutions

Western blotting (WB): 1:1,000-1:5,000

Immunocytochemistry (IC): 1:100-1:1,000

**Note:** This product is for research use only.

## Validation Data

---

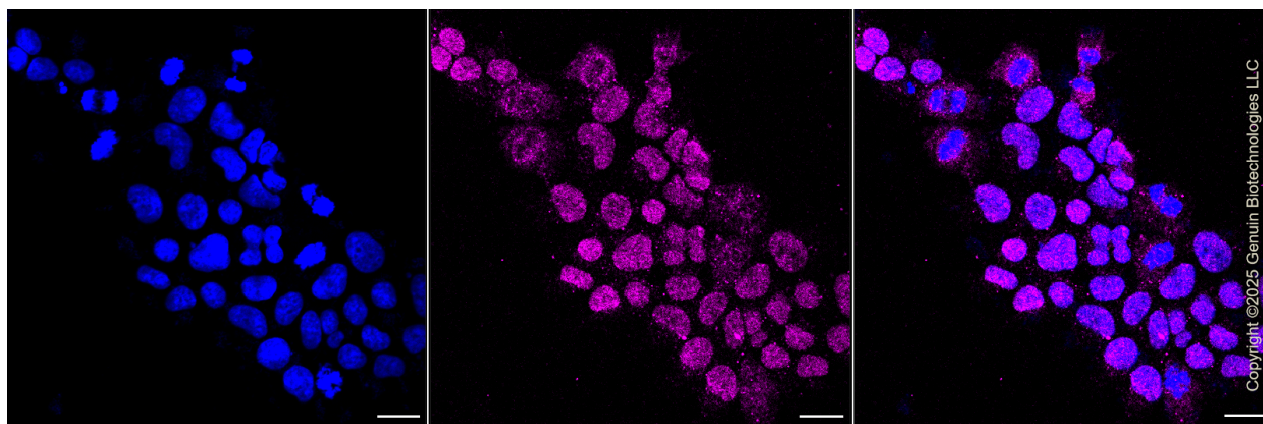
### SUPPORT

SUPPORT@GENUINBIOTECH.COM  
TEL: +1-540-855-7041

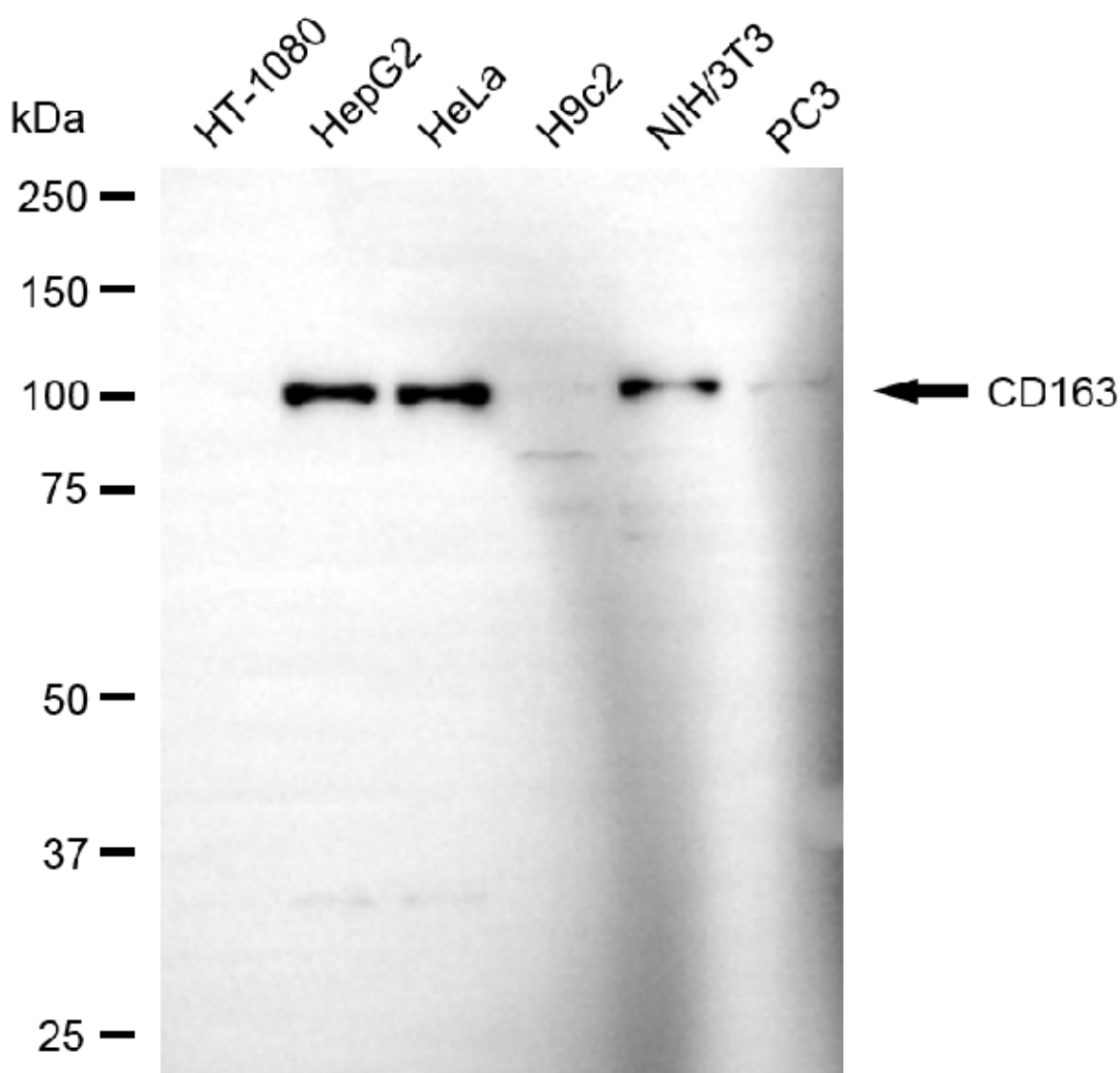
### ORDERS

SALES@GENUINBIOTECH.COM  
FAX: +1-540-855-7041

[WWW.GENUINBIOTECH.COM](http://WWW.GENUINBIOTECH.COM)



Immunocytochemical staining of HeLa cells with anti-CD163 antibody (Cat#4522, 1:1,000). Nuclei were stained blue with DAPI; CD163 was stained magenta with Alexa Fluor® 647. Images were taken using Leica stellaris 5. Protein abundance based on laser Intensity and smart gain: Medium. Scale bar, 20  $\mu$ m.



## SUPPORT

SUPPORT@GENUINBIOTECH.COM  
TEL: +1-540-855-7041

## ORDERS

SALES@GENUINBIOTECH.COM  
FAX: +1-540-855-7041

WWW.GENUINBIOTECH.COM

## **Anti-CD163 Recombinant Rabbit Monoclonal Antibody**

PAGE 3

Western blotting analysis using anti-CD163 antibody (Cat#4522). Total cell lysates (30 µg) from various cell lines were loaded and separated by SDS-PAGE. The blot was incubated with anti-CD163 antibody (Cat#4522, 1:5,000) and HRP-conjugated goat anti-rabbit secondary antibody (Cat#201, 1:20,000) respectively. Image was developed using FeQ™ ECL Substrate Kit (Cat#226).

---

### **SUPPORT**

SUPPORT@GENUINBIOTECH.COM  
TEL: +1-540-855-7041

### **ORDERS**

SALES@GENUINBIOTECH.COM  
FAX: +1-540-855-7041

**WWW.GENUINBIOTECH.COM**