

Anti-ARHGEF2 Recombinant Rabbit Monoclonal Antibody



Catalog #: 4523

Aliases

ARHGEF2; Rho/Rac Guanine Nucleotide Exchange Factor 2; GEF-H1; LFP40; Rho/Rac Guanine Nucleotide Exchange Factor (GEF); KIAA0651; GEFH1; P40; Rho Guanine Nucleotide Exchange Factor; Proliferating Cell Nucleolar Antigen P40; Guanine Nucleotide Exchange Factor H1; Microtubule-Regulated Rho-GEF; Lfc; NEDMHM; GEF; LFC

Background

Gene Name: ARHGEF2

NCBI Gene Entry: [9181](#)

UniProt Entry: [Q92974](#)

Application Information

Molecular Weight: Predicted, 111 kDa; observed, 112 kDa

Clonality: Rabbit monoclonal antibody

Clone ID: 24GB11645

Species Reactivity: Human, mouse, rat

Applications Tested: Western blotting (WB), flow cytometry (FCM), immunocytochemistry (IC)

Immunogen

A synthesized peptide derived from human GEF H1

Isotype

Rabbit IgG

Storage Buffer

Supplied in PBS (pH 7.4) containing 50% glycerol, and 0.02% sodium azide.

Storage

Store at -20 °C for one year.

Recommended Dilutions

Western Blotting (WB): 1:1,000-1:5,000

Flow Cytometry (FCM): 1:2,000

Immunocytochemistry (IC): 1:100-1:1,000

SUPPORT

SUPPORT@GENUINBIOTECH.COM
TEL: +1-540-855-7041

ORDERS

SALES@GENUINBIOTECH.COM
FAX: +1-540-855-7041

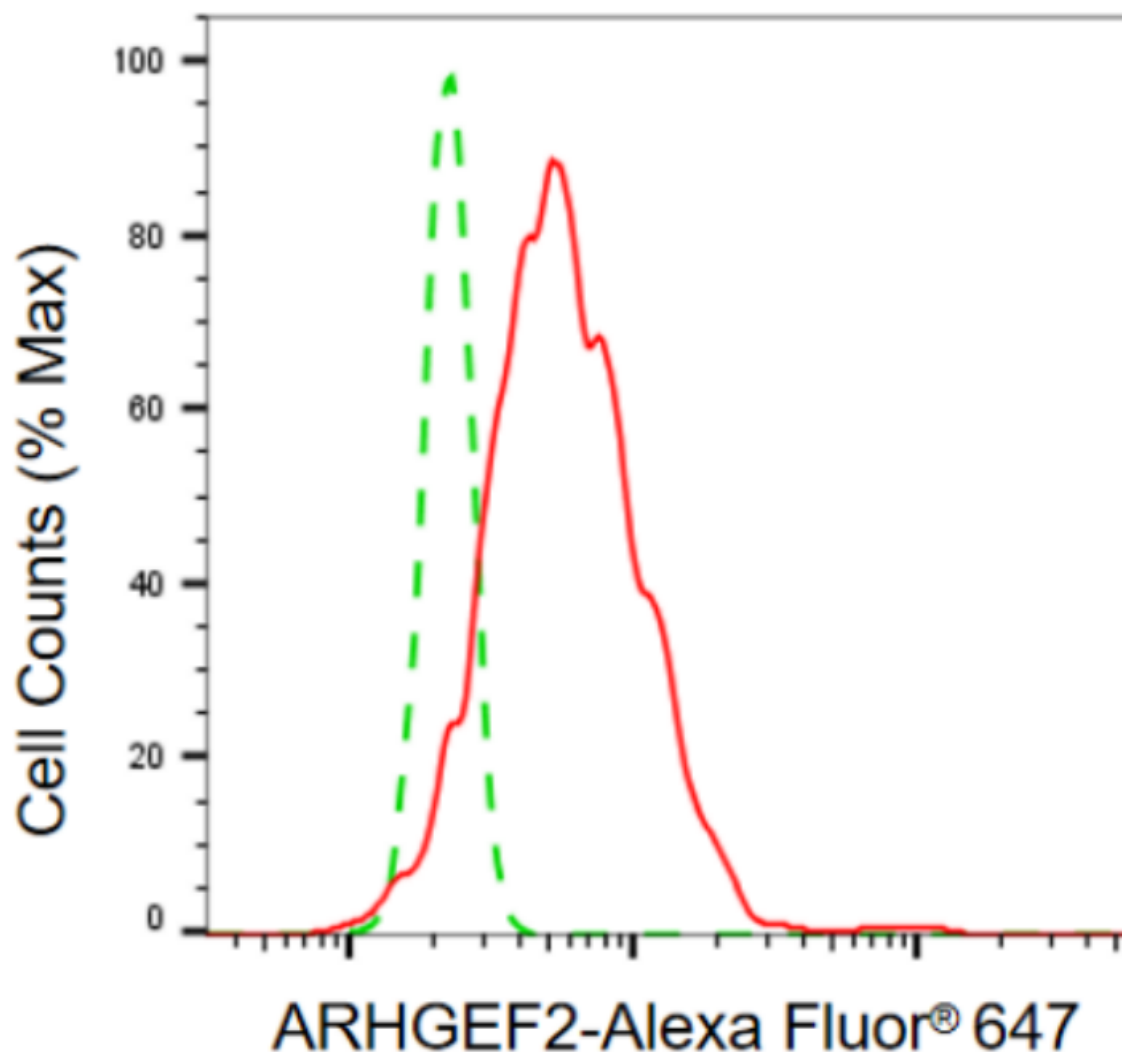
WWW.GENUINBIOTECH.COM

Anti-ARHGEF2 Recombinant Rabbit Monoclonal Antibody

PAGE 2

Note: This product is for research use only.

Validation Data



Copyright ©2024 Genuin Biotechnologies LLC

Flow cytometric analysis of ARHGEF2 expression in HT-1080 cells using anti-ARHGEF2 antibody (Cat#4523, 1:2,000). Green, isotype control; red, ARHGEF2.

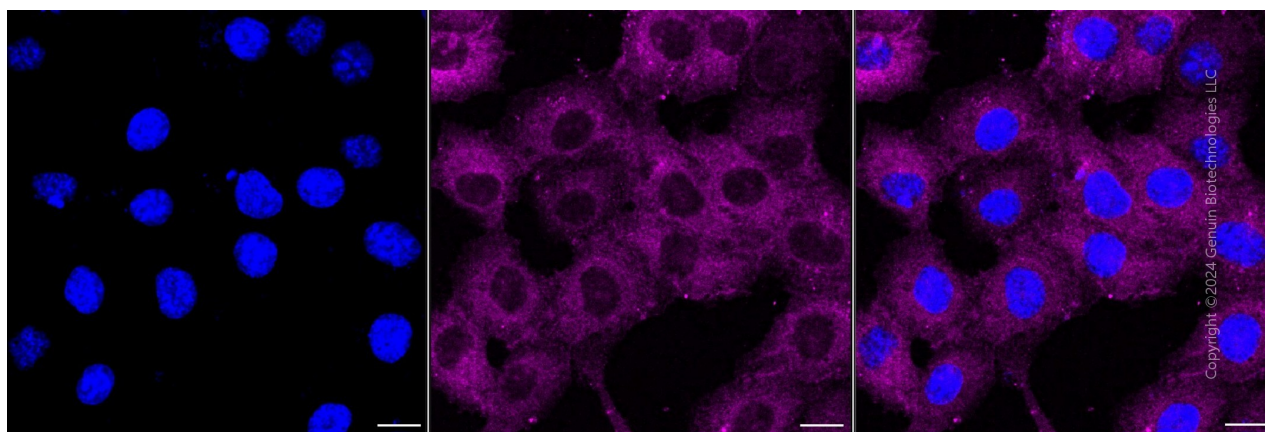
SUPPORT

SUPPORT@GENUINBIOTECH.COM
TEL: +1-540-855-7041

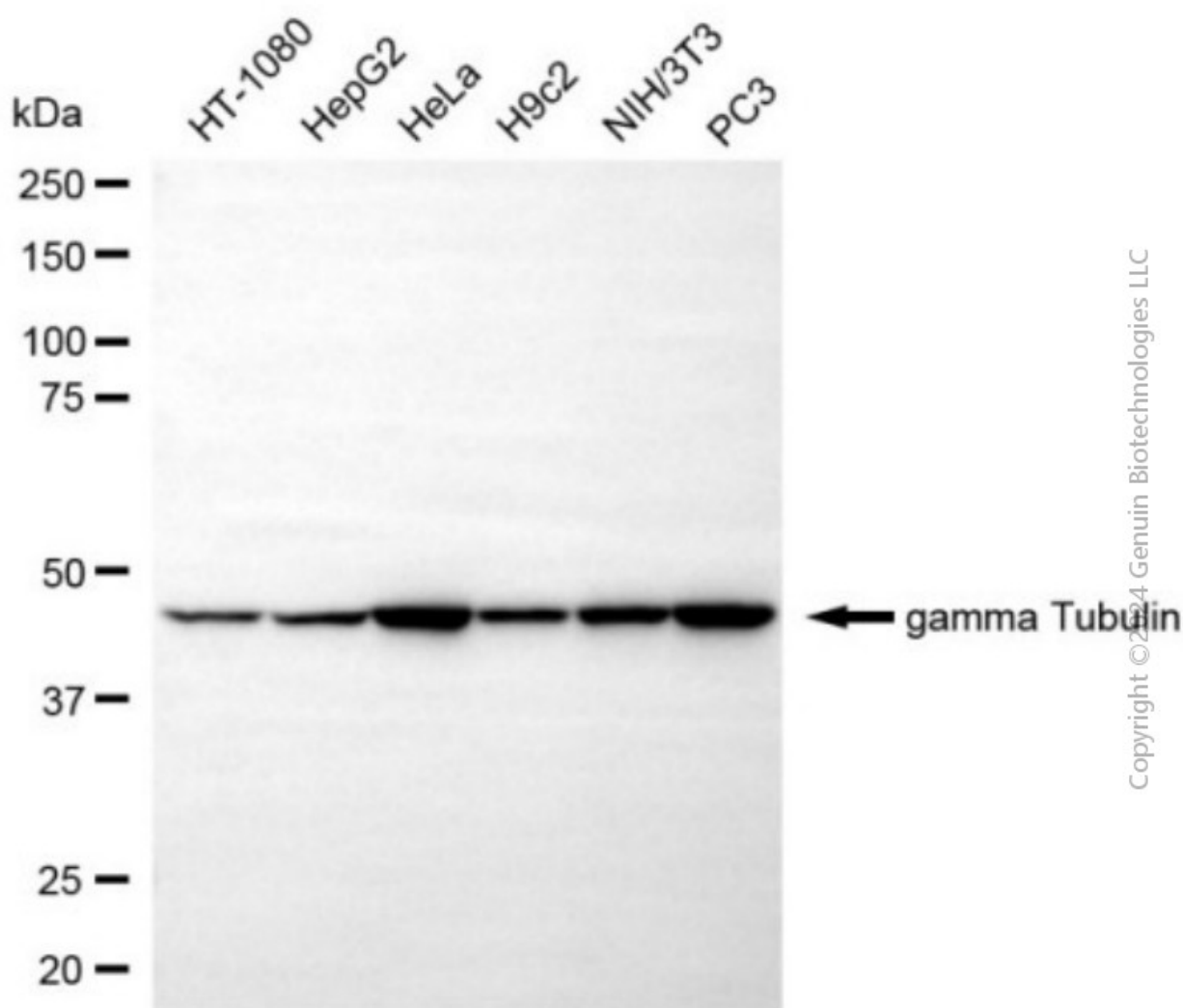
ORDERS

SALES@GENUINBIOTECH.COM
FAX: +1-540-855-7041

WWW.GENUINBIOTECH.COM



Immunocytochemical staining of HT-1080 cells with anti-ARHGEF2 antibody (Cat4523, 1:1,000). Nuclei were stained blue with DAPI; ARHGEF2 was stained magenta with Alexa Fluor® 647. Images were taken using Leica stellaris 5. Protein abundance based on laser Intensity and smart gain: Medium. Scale bar, 20 µm.



Anti-ARHGEF2 Recombinant Rabbit Monoclonal Antibody

PAGE 4

Western blotting analysis using anti-ARHGEF2 antibody (Cat#4523). Total cell lysates (30 µg) from various cell lines were loaded and separated by SDS-PAGE. The blot was incubated with anti-ARHGEF2 antibody (Cat#4523, 1:5,000) and HRP-conjugated goat anti-rabbit secondary antibody (Cat#201, 1:20,000) respectively. Image was developed using FeQ™ ECL Substrate Kit (Cat#226).

SUPPORT

SUPPORT@GENUINBIOTECH.COM
TEL: +1-540-855-7041

ORDERS

SALES@GENUINBIOTECH.COM
FAX: +1-540-855-7041

WWW.GENUINBIOTECH.COM