

Anti-BCAR1 Recombinant Rabbit Monoclonal Antibody



Catalog #: 4524

Aliases

BCAR1; BCAR1 Scaffold Protein, Cas Family Member; CASS1; CAS; Cas Scaffolding Protein Family Member 1; CRKAS; Breast Cancer Anti-Estrogen Resistance Protein 1; BCAR1, Cas Family Scaffolding Protein; BCAR1, Cas Family Scaffold Protein; P130Cas; Breast Cancer Anti-Estrogen Resistance 1; Crk-Associated Substrate P130Cas; Crk-Associated Substrate; CRK-Associated Substrate; P130CAS; P130cas; Crkas; CAS1

Background

Gene Name: BCAR1

NCBI Gene Entry: [9564](#)

UniProt Entry: [P56945](#)

Application Information

Molecular Weight: Predicted, 93 kDa; observed, 130 kDa

Clonality: Rabbit monoclonal antibody

Clone ID: 24GB11650

Species Reactivity: Human, mouse, rat

Applications Tested: Western blotting (WB), flow cytometry (FCM), immunocytochemistry (IC)

Immunogen

A synthesized peptide derived from human BCAR1

Isotype

Rabbit IgG

Storage Buffer

Supplied in PBS (pH 7.4) containing 50% glycerol, and 0.02% sodium azide.

Storage

Store at -20 °C for one year.

Recommended Dilutions

Western Blotting (WB): 1:1,000-1:5,000

Flow Cytometry (FCM): 1:2,000

Immunocytochemistry (IC): 1:100-1:1,000

SUPPORT

SUPPORT@GENUINBIOTECH.COM
TEL: +1-540-855-7041

ORDERS

SALES@GENUINBIOTECH.COM
FAX: +1-540-855-7041

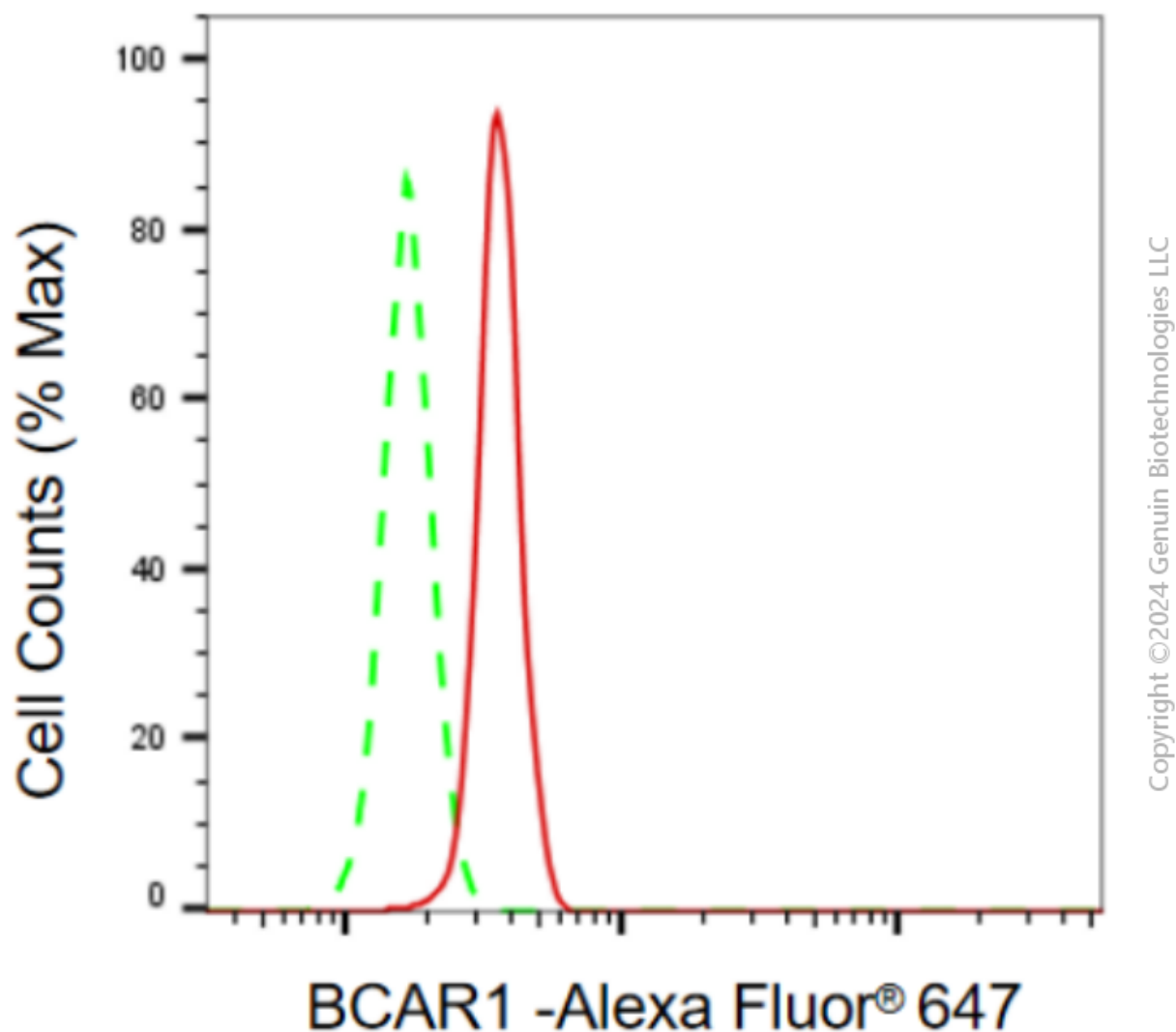
WWW.GENUINBIOTECH.COM

Anti-BCAR1 Recombinant Rabbit Monoclonal Antibody

PAGE 2

Note: This product is for research use only.

Validation Data



Flow cytometric analysis of BCAR1 expression in H9C2 cells using anti-BCAR1 antibody (Cat#4524, 1:2,000). Green, isotype control; red, BCAR1.

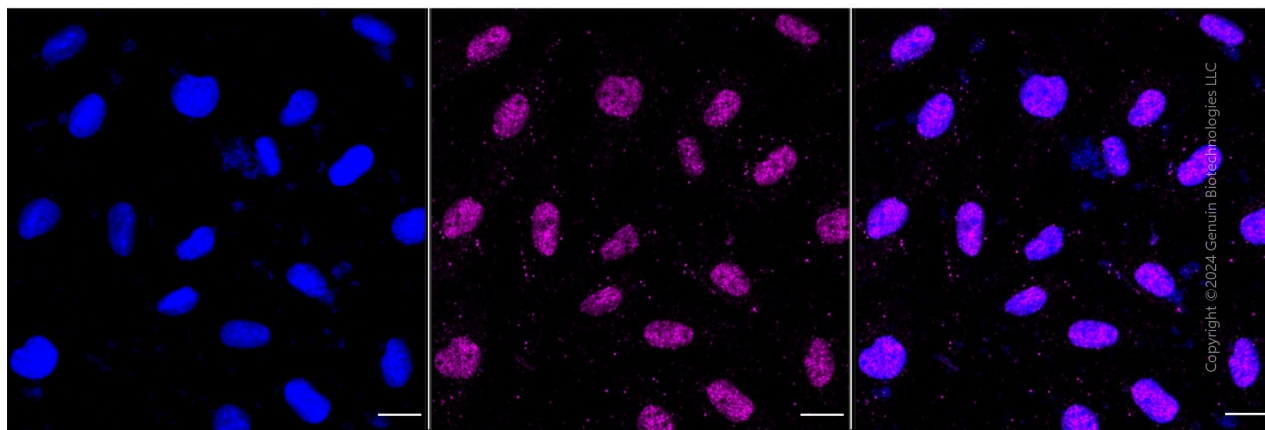
SUPPORT

SUPPORT@GENUINBIOTECH.COM
TEL: +1-540-855-7041

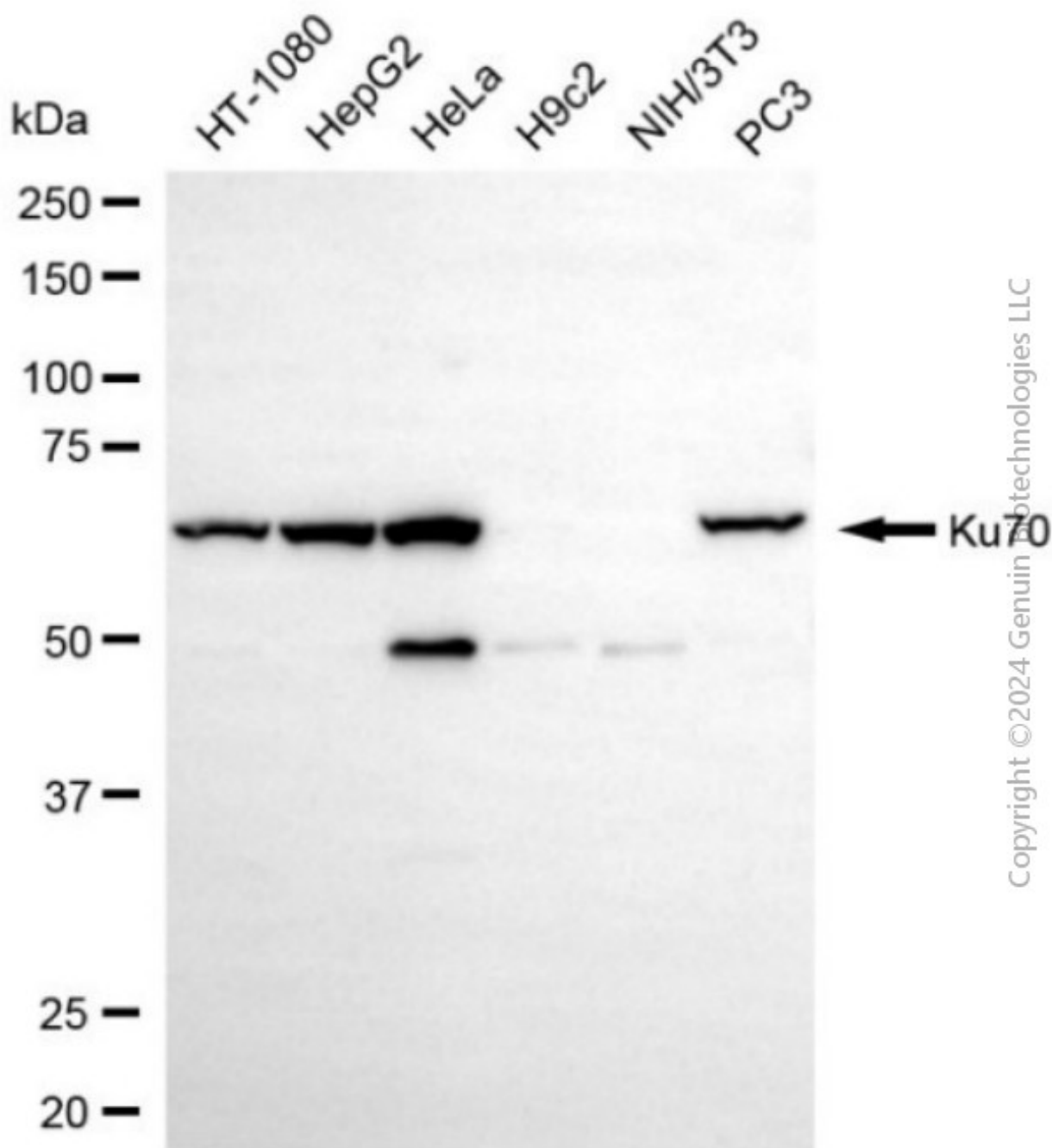
ORDERS

SALES@GENUINBIOTECH.COM
FAX: +1-540-855-7041

WWW.GENUINBIOTECH.COM



Immunocytochemical staining of H9c2 cells with anti-BCAR1 antibody (Cat#4524, 1:1,000). Nuclei were stained blue with DAPI; BCAR1 was stained magenta with Alexa Fluor® 647. Images were taken using Leica stellaris 5. Protein abundance based on laser Intensity and smart gain: Medium. Scale bar, 20 μ m.



Copyright ©2024 Genuin Biotechnologies LLC

Western blotting analysis using anti-BCAR1 antibody (Cat#4524). Total cell lysates (30 µg) from various cell lines were loaded and separated by SDS-PAGE. The blot was incubated with anti-BCAR1 antibody (Cat#4524, 1:5,000) and HRP-conjugated goat anti-rabbit secondary antibody (Cat#201, 1:20,000) respectively. Image was developed using FeQ™ ECL Substrate Kit (Cat#226).