

Anti-Nemo Like Kinase Recombinant Rabbit Monoclonal Antibody



Catalog #: 4528

Aliases

Nemo Like Kinase; Serine/Threonine-Protein Kinase NLK; Nemo-Like Kinase; EC 2.7.11.24; Protein LAK1; EC 2.7.11; LAK1

Background

Gene Name: NLK

NCBI Gene Entry: [51701](#)

UniProt Entry: [Q9UBE8](#)

Application Information

Molecular Weight: Predicted, 58 kDa; observed, 58 kDa

Clonality: Rabbit monoclonal antibody

Clone ID: 24GB11670

Species Reactivity: Human

Applications Tested: Western blotting (WB), flow cytometry (FCM), immunocytochemistry (IC)

Immunogen

A synthesized peptide derived from human NLK

Isotype

Rabbit IgG

Storage Buffer

Supplied in PBS (pH 7.4) containing 50% glycerol, and 0.02% sodium azide.

Storage

Store at -20 °C for one year.

Recommended Dilutions

Western Blotting (WB): 1:1,000-1:5,000

Flow Cytometry (FCM): 1:2,000

Immunocytochemistry (IC): 1:100-1:1,000

Note: This product is for research use only.

Validation Data

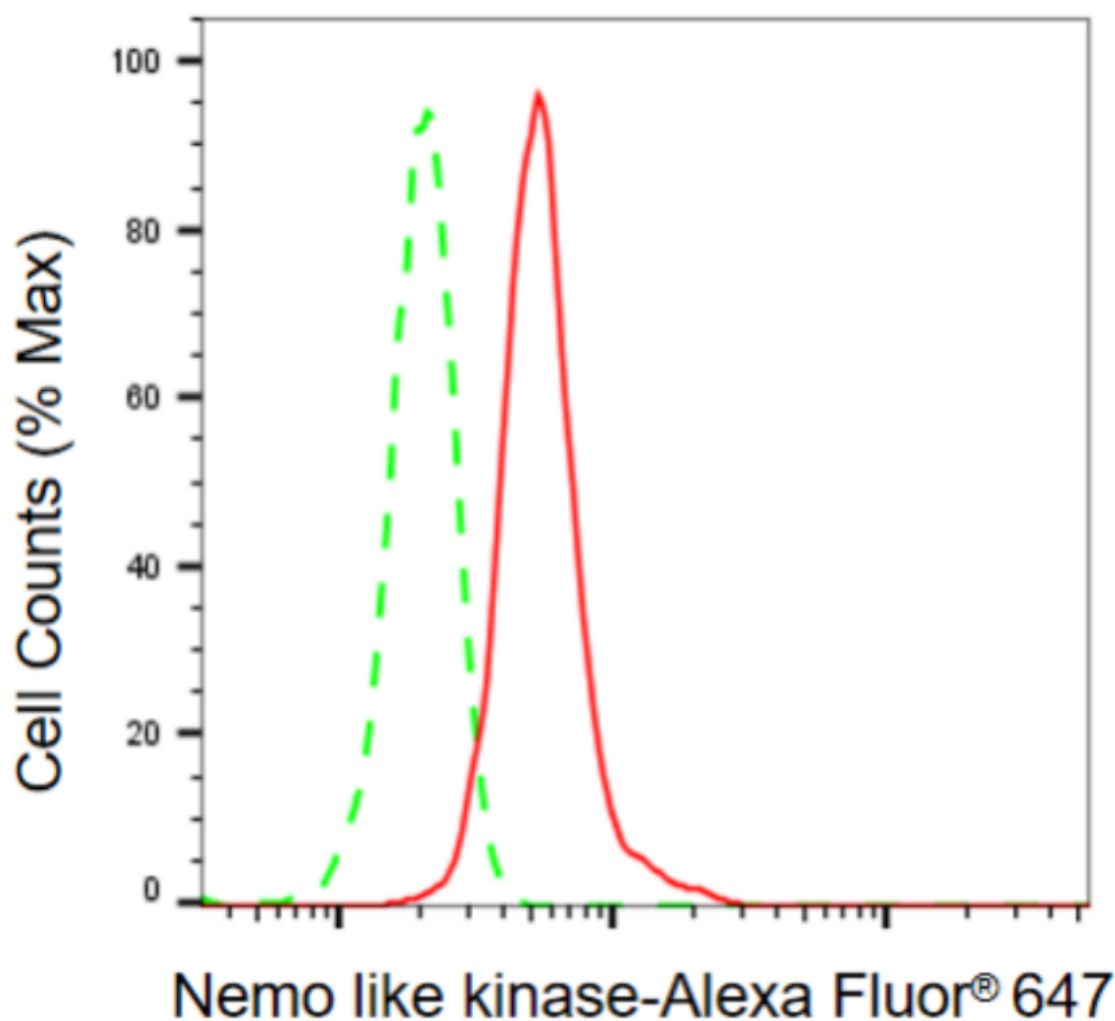
SUPPORT

SUPPORT@GENUINBIOTECH.COM
TEL: +1-540-855-7041

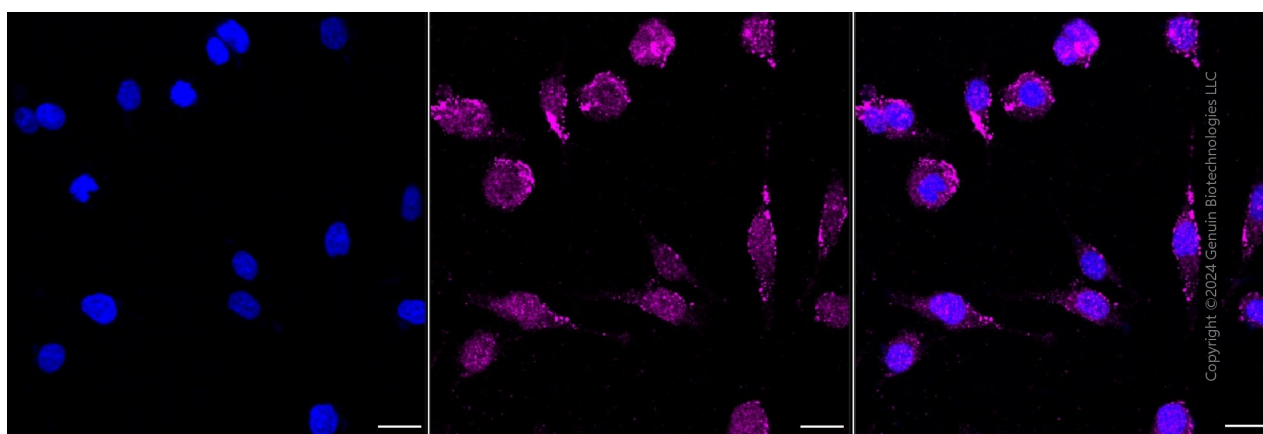
ORDERS

SALES@GENUINBIOTECH.COM
FAX: +1-540-855-7041

WWW.GENUINBIOTECH.COM



Flow cytometric analysis of nemo like kinase expression in HeLa cells using anti-nemo like kinase antibody (Cat#4528, 1:2,000). Green, isotype control; red, nemo like kinase.



Immunocytochemical staining of HeLa cells with anti-Nemo like kinase antibody (Cat#4528, 1:1,000). Nuclei were stained blue with DAPI; Nemo like kinase was stained magenta with Alexa

SUPPORT

SUPPORT@GENUINBIOTECH.COM
TEL: +1-540-855-7041

ORDERS

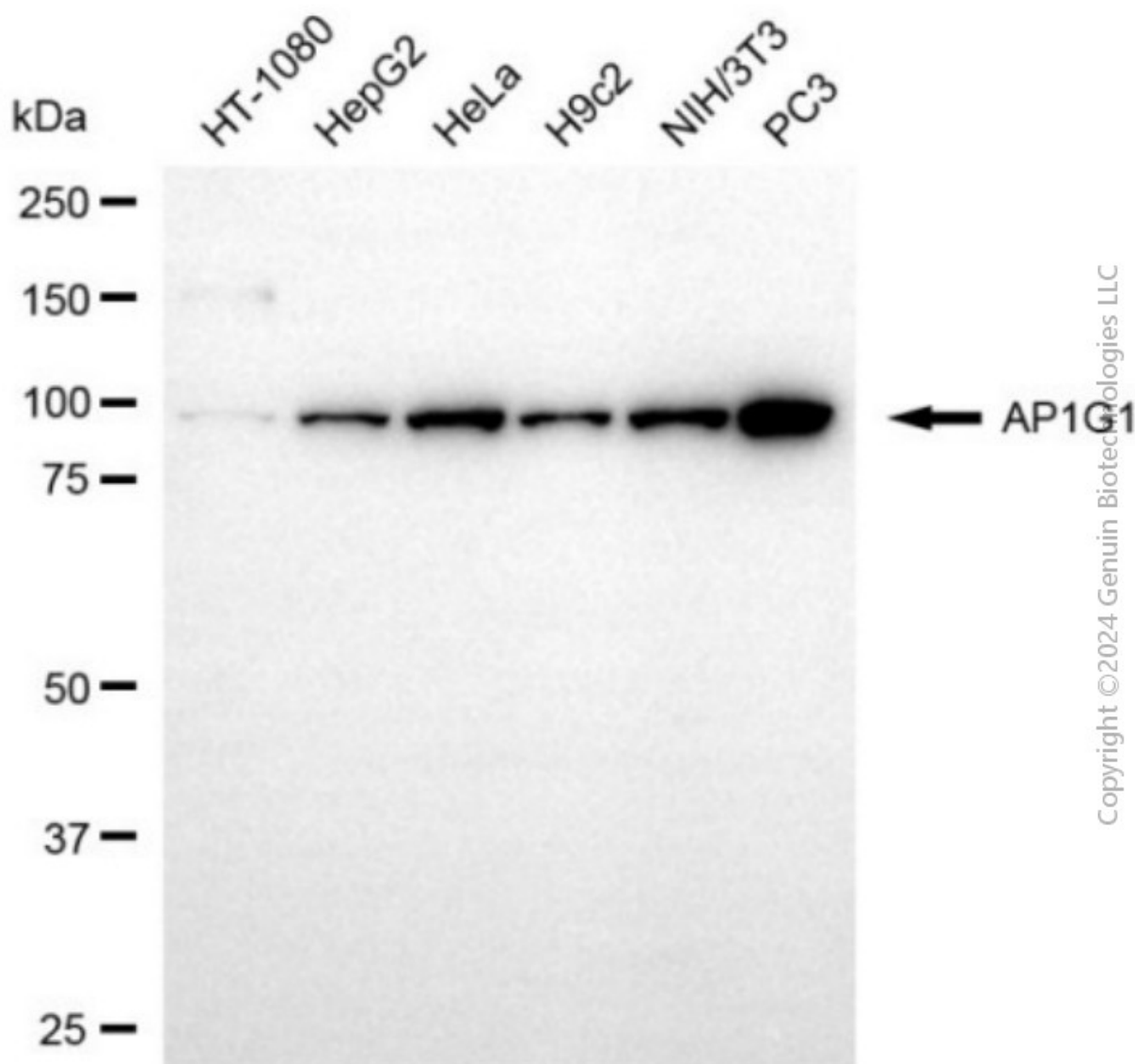
SALES@GENUINBIOTECH.COM
FAX: +1-540-855-7041

WWW.GENUINBIOTECH.COM

Anti-Nemo Like Kinase Recombinant Rabbit Monoclonal Antibody

PAGE 3

Fluor® 647. Images were taken using Leica stellaris 5. Protein abundance based on laser Intensity and smart gain: Medium. Scale bar, 20 µm.



Western blotting analysis using anti-nemo like kinase antibody (Cat#4528). Total cell lysates (30 µg) from various cell lines were loaded and separated by SDS-PAGE. The blot was incubated with anti-nemo like kinase antibody (Cat#4528, 1:5,000) and HRP-conjugated goat anti-rabbit secondary antibody (Cat#201, 1:20,000) respectively. Image was developed using NaQ™ ECL Substrate Kit (Cat#716).

SUPPORT

SUPPORT@GENUINBIOTECH.COM
TEL: +1-540-855-7041

ORDERS

SALES@GENUINBIOTECH.COM
FAX: +1-540-855-7041

WWW.GENUINBIOTECH.COM