

Anti-Synaptophysin like 1 Recombinant Rabbit Monoclonal Antibody



Catalog #: 4530

Aliases

SYPL1; Synaptophysin Like 1; Pantophysin; SYPL; Synaptophysin-Like Protein 1; Synaptophysin-Like Protein; Synaptophysin-Like 1; H-SP1

Background

Gene Name: SYPL1

NCBI Gene Entry: [6856](#)

UniProt Entry: [Q16563](#)

Application Information

Molecular Weight: Predicted, 29 kDa; observed, 29-75 kDa

Clonality: Rabbit monoclonal antibody

Clone ID: 24GB11680

Species Reactivity: Human, mouse

Applications Tested: Western blotting (WB), flow cytometry (FCM), immunocytochemistry (IC)

Immunogen

A synthesized peptide derived from human SYPL1

Isotype

Rabbit IgG

Storage Buffer

Supplied in PBS (pH 7.4) containing 50% glycerol, and 0.02% sodium azide.

Storage

Store at -20 °C for one year.

Recommended Dilutions

Western Blotting (WB): 1:1,000-1:5,000

Immunocytochemistry (IC): 1:100-1:1,000

Flow Cytometry (FCM): 1:2,00

Note: This product is for research use only.

Validation Data

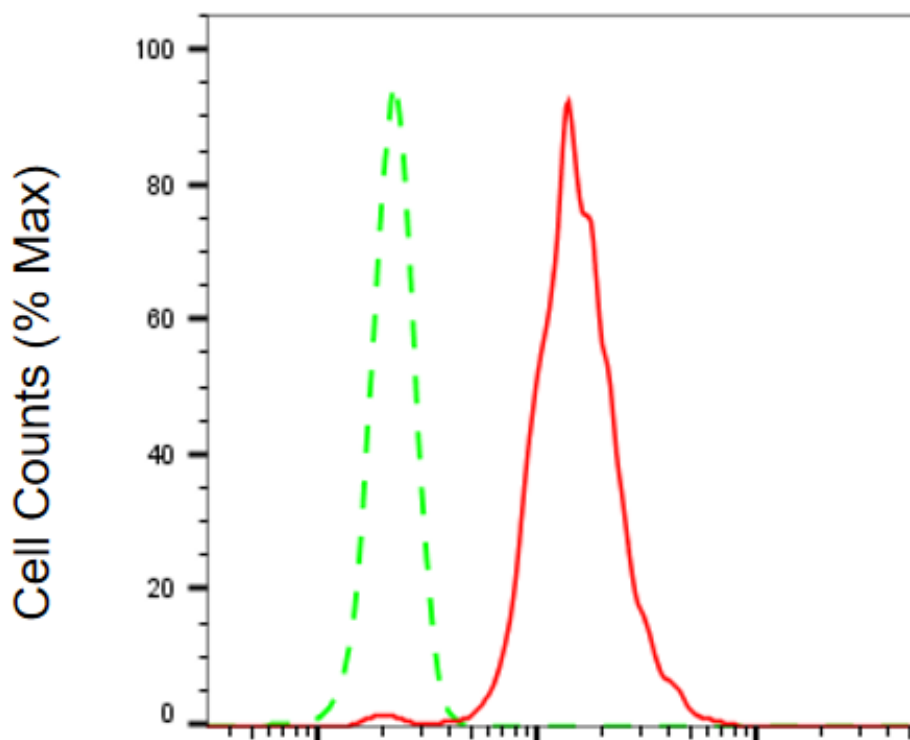
SUPPORT

SUPPORT@GENUINBIOTECH.COM
TEL: +1-540-855-7041

ORDERS

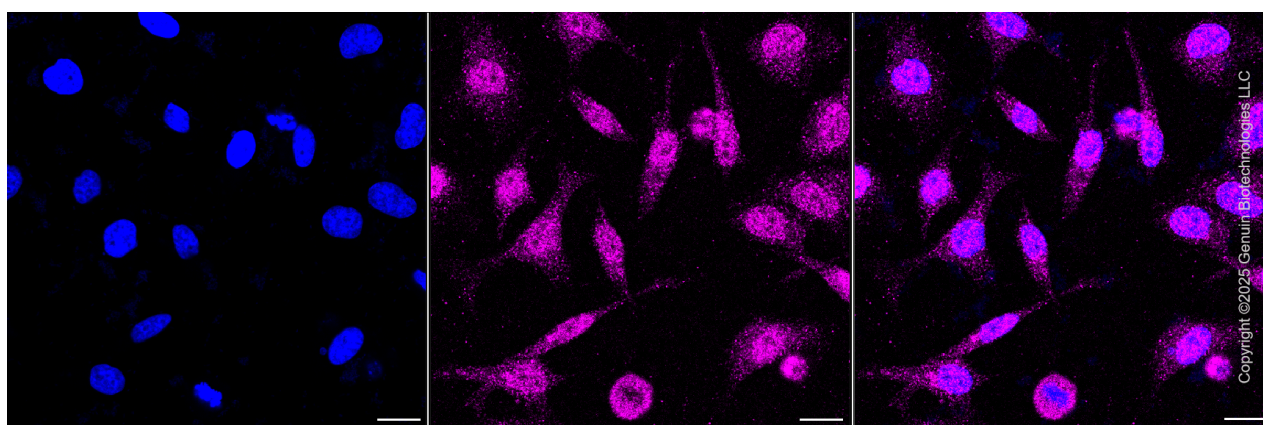
SALES@GENUINBIOTECH.COM
FAX: +1-540-855-7041

WWW.GENUINBIOTECH.COM



Synaptophysin like 1-Alexa Fluor® 647

Flow cytometric analysis of Synaptophysin like 1 expression in HeLa cells using anti-Synaptophysin like 1 antibody (Cat#4530, 1:2,000). Green, isotype control; red, Synaptophysin like 1.



Immunocytochemical staining of HeLa cells with anti-Synaptophysin like 1 antibody (Cat#4530, 1:1,000). Nuclei were stained blue with DAPI; Synaptophysin like 1 was stained magenta with Alexa Fluor® 647. Images were taken using Leica stellaris 5. Protein abundance based on laser Intensity and smart gain: Medium. Scale bar, 20 µm.

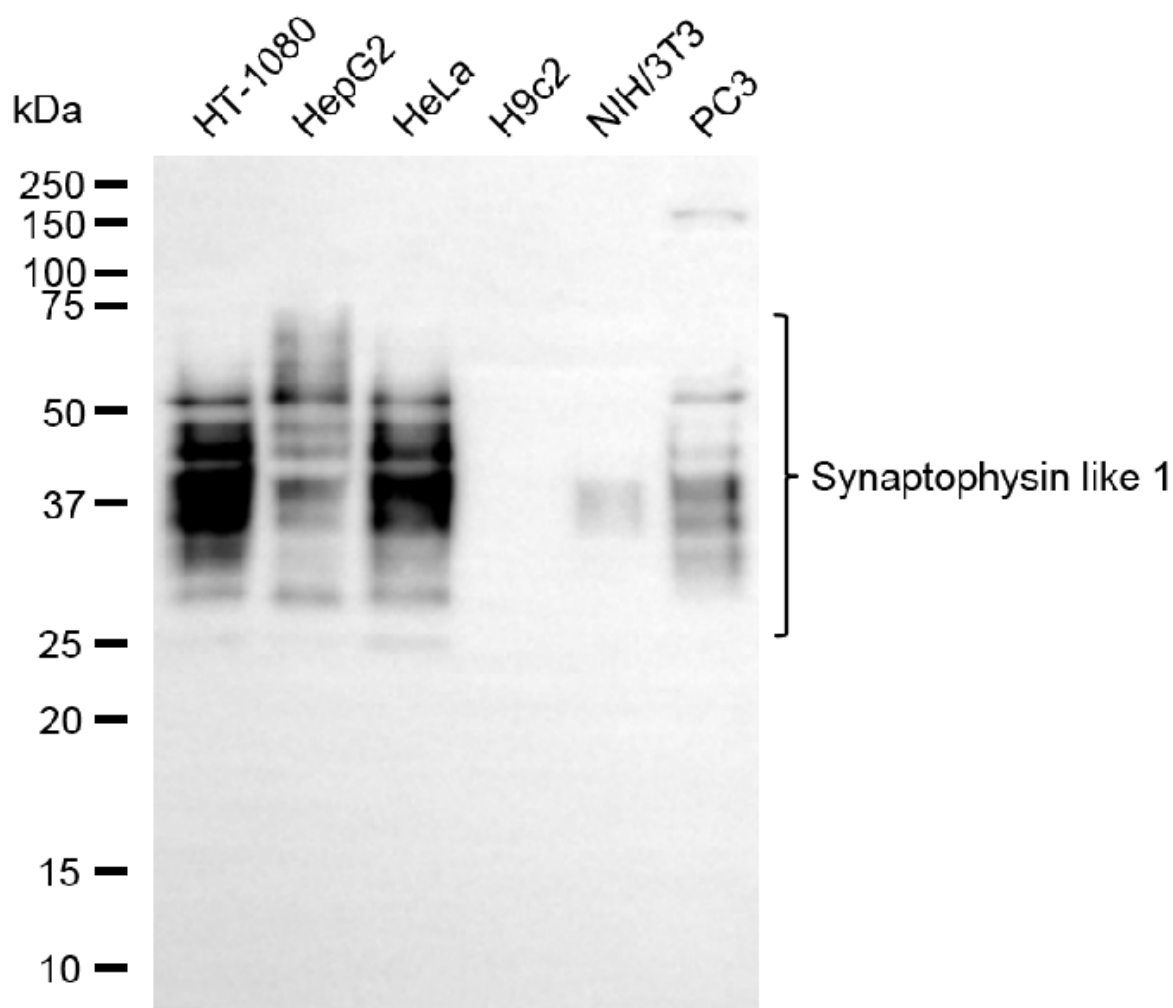
SUPPORT

SUPPORT@GENUINBIOTECH.COM
TEL: +1-540-855-7041

ORDERS

SALES@GENUINBIOTECH.COM
FAX: +1-540-855-7041

WWW.GENUINBIOTECH.COM



Copyright ©2025 Genuin Biotechnologies LLC

Western blotting analysis using anti-synaptophysin like 1 antibody (Cat#4530). Total cell lysates (30 µg) from various cell lines were loaded and separated by SDS-PAGE. The blot was incubated with anti-synaptophysin like 1 antibody (Cat#4530, 1:5,000) and HRP-conjugated goat anti-rabbit secondary antibody (Cat#201, 1:20,000) respectively. Image was developed using NaQ™ ECL Substrate Kit (Cat#716).