

# Anti-YES1 Recombinant Rabbit Monoclonal Antibody



**Catalog #: 4538**

## Aliases

YES1; YES Proto-Oncogene 1, Src Family Tyrosine Kinase; V-Yes-1 Yamaguchi Sarcoma Viral Oncogene Homolog 1; Tyrosine-Protein Kinase Yes; Proto-Oncogene C-Yes; EC 2.7.10.2 4; HsT441; C-Yes; Yes; YES; YES1 Proto-Oncogene, Src Family Tyrosine Kinase; Proto-Oncogene Tyrosine-Protein Kinase YES; Yamaguchi Sarcoma Oncogene; Cellular Yes-1 Protein; EC 2.7.10; P61-YES; P61-Yes; HST441; C-YES

## Background

Gene Name: YES1

NCBI Gene Entry: [7525](#)

UniProt Entry: [P07947](#)

## Application Information

Molecular Weight: Predicted, 61 kDa; observed, 61 kDa

Clonality: Rabbit monoclonal antibody

Clone ID: 24GB11720

Species Reactivity: Human, mouse, rat

Applications Tested: Western blotting (WB), flow cytometry (FCM), immunocytochemistry (IC)

## Immunogen

A synthesized peptide derived from human Yes1

## Isotype

Rabbit IgG

## Storage Buffer

Supplied in PBS (pH 7.4) containing 50% glycerol, and 0.02% sodium azide.

## Storage

Store at -20 °C for one year.

## Recommended Dilutions

Western Blotting (WB): 1:1,000-1:5,000

Flow Cytometry (FCM): 1:2,000

Immunocytochemistry (IC): 1:100-1:1,000

---

### SUPPORT

SUPPORT@GENUINBIOTECH.COM  
TEL: +1-540-855-7041

### ORDERS

SALES@GENUINBIOTECH.COM  
FAX: +1-540-855-7041

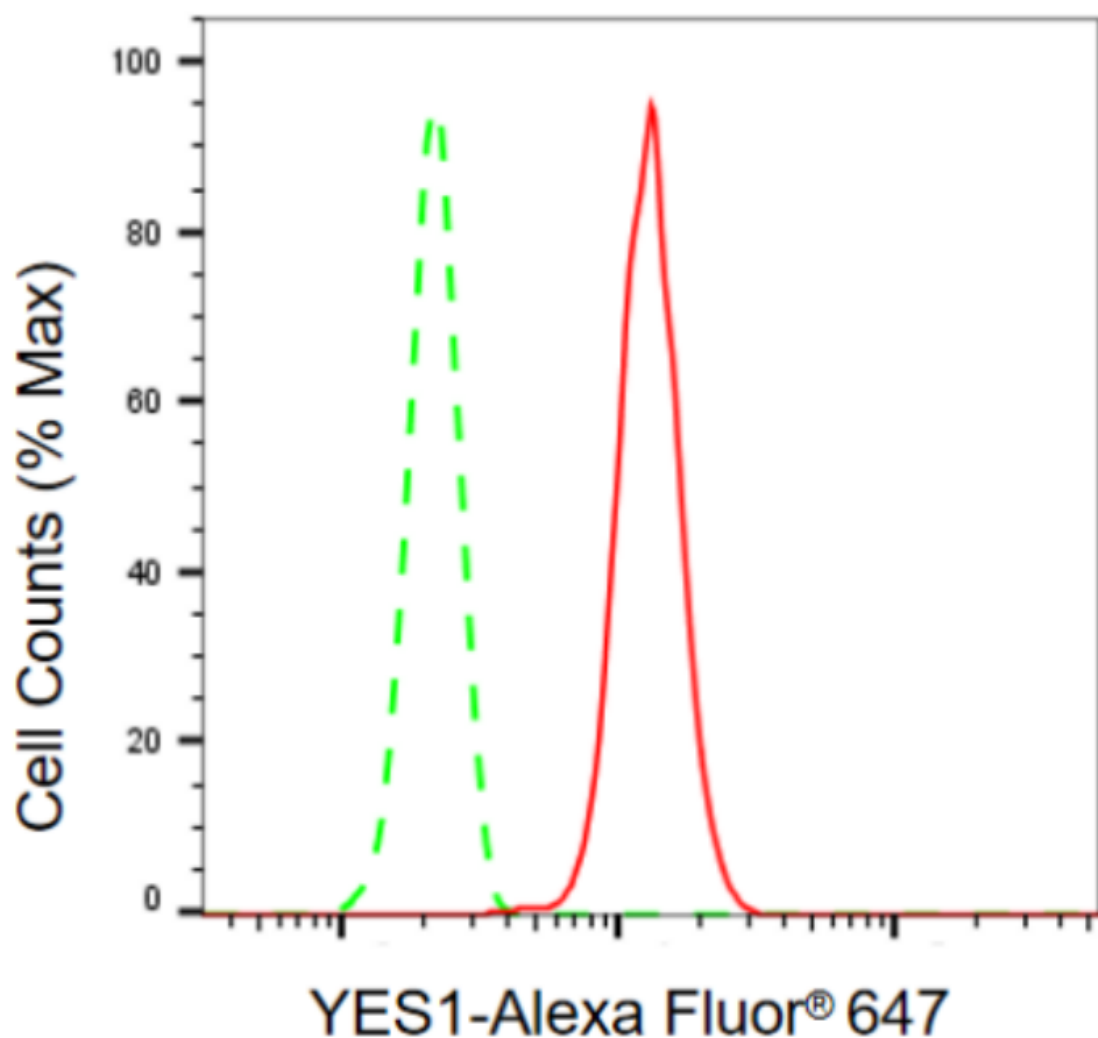
[WWW.GENUINBIOTECH.COM](http://WWW.GENUINBIOTECH.COM)

# Anti-YES1 Recombinant Rabbit Monoclonal Antibody

PAGE 2

**Note:** This product is for research use only.

## Validation Data



Copyright ©2024 Genuin Biotechnologies LLC

Flow cytometric analysis of YES1 expression in HepG2 cells using anti-YES1 antibody (Cat#4538, 1:2,000). Green, isotype control; red, YES1.

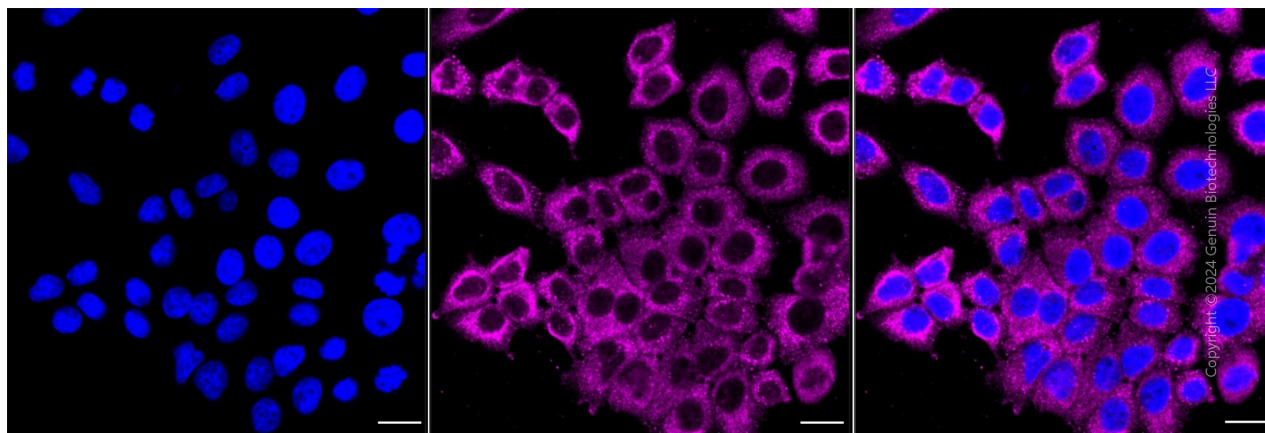
### SUPPORT

SUPPORT@GENUINBIOTECH.COM  
TEL: +1-540-855-7041

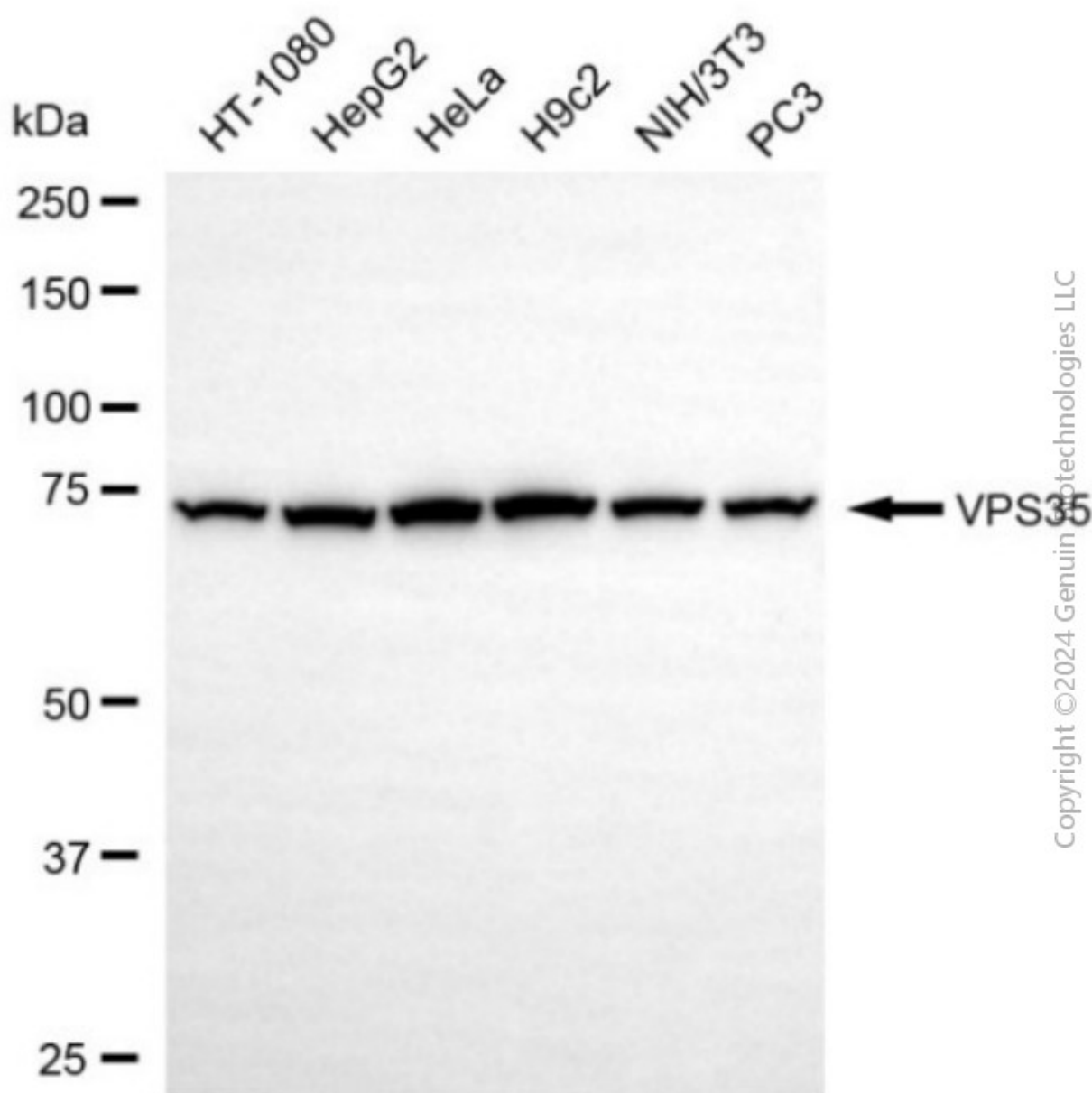
### ORDERS

SALES@GENUINBIOTECH.COM  
FAX: +1-540-855-7041

[WWW.GENUINBIOTECH.COM](http://WWW.GENUINBIOTECH.COM)



Immunocytochemical staining of HepG2 cells with anti-YES1 antibody (Cat#4538, 1:1,000). Nuclei were stained blue with DAPI; YES1 was stained magenta with Alexa Fluor® 647. Images were taken using Leica stellaris 5. Protein abundance based on laser Intensity and smart gain: Medium. Scale bar, 20  $\mu$ m.



Copyright © 2024 Genuin Biotechnologies LLC

Western blotting analysis using anti-YES1 antibody (Cat#4538). Total cell lysates (30 µg) from various cell lines were loaded and separated by SDS-PAGE. The blot was incubated with anti-YES1 antibody (Cat#4538, 1:5,000) and HRP-conjugated goat anti-rabbit secondary antibody (Cat#201, 1:20,000) respectively. Image was developed using NaQ™ ECL Substrate Kit (Cat#716).