

Anti-PAFAH1B1 Recombinant Rabbit Monoclonal Antibody



Catalog #: 4542

Aliases

PAFAH1B1; Platelet Activating Factor Acetylhydrolase 1b Regulatory Subunit 1; LIS1; PAFAH; MDCR; MDS; Platelet-Activating Factor Acetylhydrolase 1b, Regulatory Subunit 1 (45kDa); Platelet-Activating Factor Acetylhydrolase IB Subunit Beta; NudF; Platelet-Activating Factor Acetylhydrolase, Isoform Ib, Alpha Subunit (45kD); Platelet-Activating Factor Acetylhydrolase, Isoform Ib, Alpha Subunit 45kDa; Platelet-Activating Factor Acetylhydrolase, Isoform Ib, Subunit 1 (45kDa); Miller-Dieker Syndrome Chromosome Region; PAF Acetylhydrolase 45 KDa Subunit; Lissencephaly 1 Protein; Lissencephaly-1 Protein; PAF-AH 45 KDa Subunit; Lissencephaly-1; PAF-AH Alpha; PAFAH Alpha; PAFAHA; LIS-1; LIS2; NUDF

Background

Gene Name: PAFAH1B1

NCBI Gene Entry: [5048](#)

UniProt Entry: [P43034](#)

Application Information

Molecular Weight: Predicted, 47 kDa; observed, 47 kDa

Clonality: Rabbit monoclonal antibody

Clone ID: 24GB11740

Species Reactivity: Human, mouse, rat

Applications Tested: Western blotting (WB), flow cytometry (FCM), immunocytochemistry (IC)

Immunogen

A synthesized peptide derived from human LIS1

Isotype

Rabbit IgG

Storage Buffer

Supplied in PBS (pH 7.4) containing 50% glycerol, and 0.02% sodium azide.

Storage

Store at -20 °C for one year.

Recommended Dilutions

Western Blotting (WB): 1:1,000-1:5,000

SUPPORT

SUPPORT@GENUINBIOTECH.COM
TEL: +1-540-855-7041

ORDERS

SALES@GENUINBIOTECH.COM
FAX: +1-540-855-7041

WWW.GENUINBIOTECH.COM

Anti-PAFAH1B1 Recombinant Rabbit Monoclonal Antibody

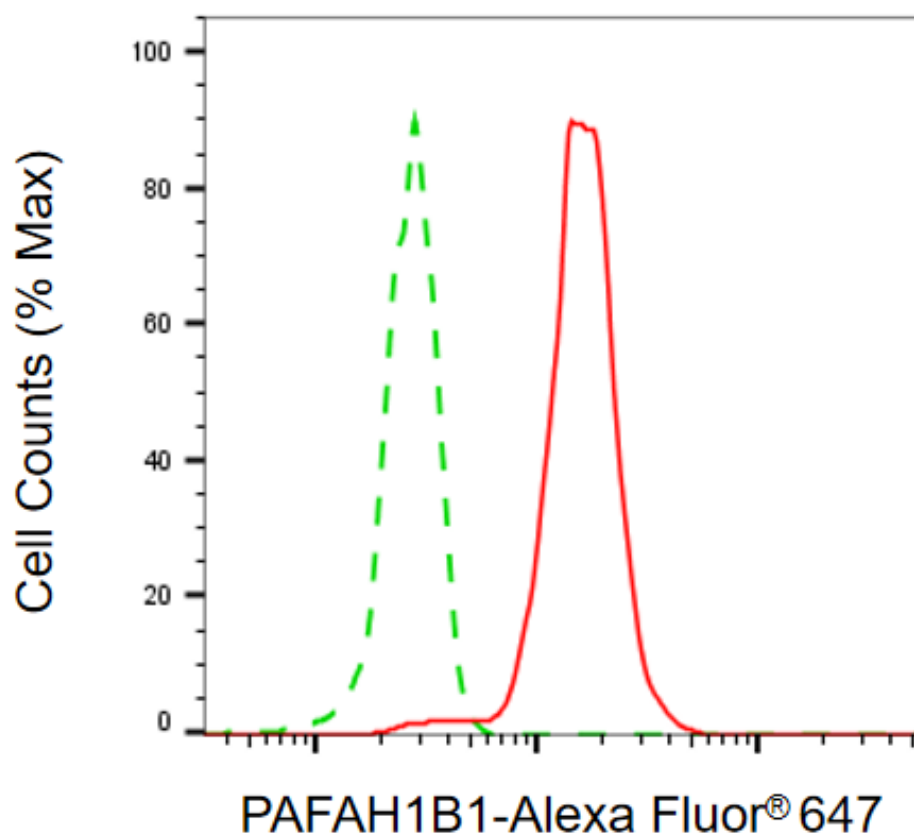
PAGE 2

Flow Cytometry (FCM): 1:2,000

Immunocytochemistry (IC): 1:100-1:1,000

Note: This product is for research use only.

Validation Data



Flow cytometric analysis of PAFAH1B1 expression in HepG2 cells using anti-PAFAH1B1 antibody (Cat#4542, 1:2,000). Green, isotype control; red, PAFAH1B1.

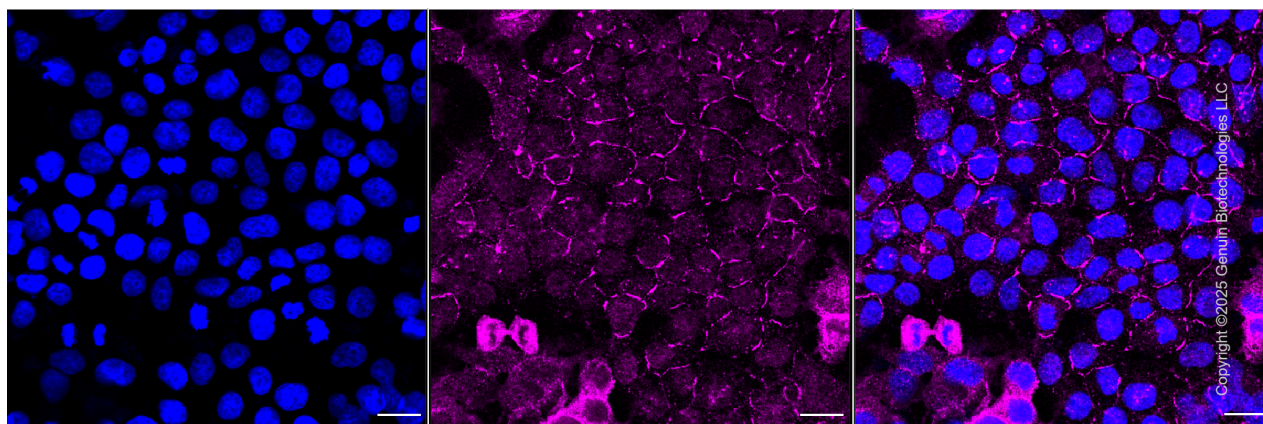
SUPPORT

SUPPORT@GENUINBIOTECH.COM
TEL: +1-540-855-7041

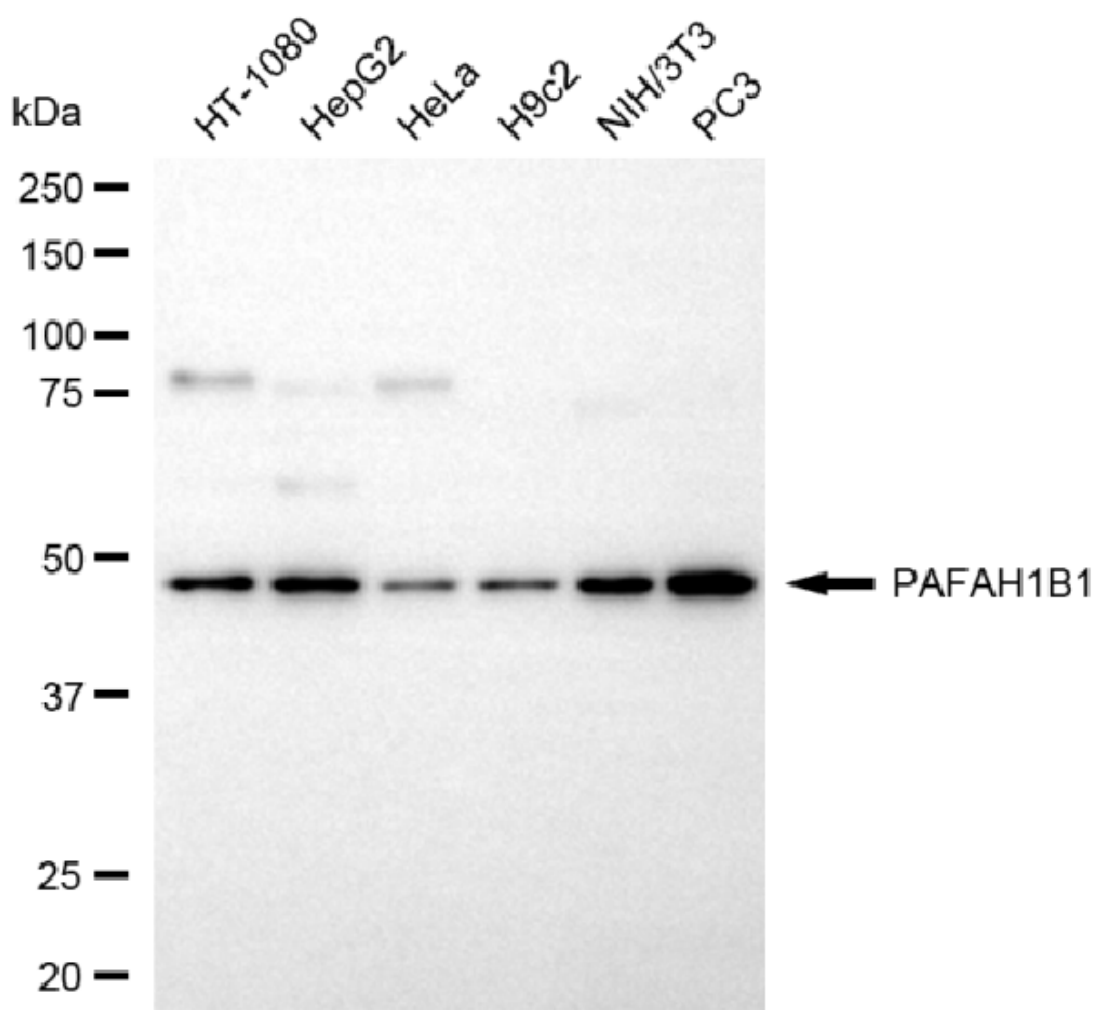
ORDERS

SALES@GENUINBIOTECH.COM
FAX: +1-540-855-7041

WWW.GENUINBIOTECH.COM



Immunocytochemical staining of HepG2 cells with anti-PAFAH1B1 antibody (Cat#4542, 1:1,000) . Nuclei were stained blue with DAPI; PAFAH1B1 was stained magenta with Alexa Fluor® 647. Images were taken using Leica stellaris 5. Protein abundance based on laser Intensity and smart gain: Medium. Scale bar, 20 μ m.



Copyright ©2025 Genuin Biotechnologies LLC

Anti-PAFAH1B1 Recombinant Rabbit Monoclonal Antibody

PAGE 4

Western blotting analysis using anti-PAFAH1B1 antibody (Cat#4542). Total cell lysates (30 µg) from various cell lines were loaded and separated by SDS-PAGE. The blot was incubated with anti-PAFAH1B1 antibody (Cat#4542, 1:5,000) and HRP-conjugated goat anti-rabbit secondary antibody (Cat#201, 1:20,000) respectively. Image was developed using NaQ™ ECL Substrate Kit (Cat#716).

SUPPORT

SUPPORT@GENUINBIOTECH.COM
TEL: +1-540-855-7041

ORDERS

SALES@GENUINBIOTECH.COM
FAX: +1-540-855-7041

WWW.GENUINBIOTECH.COM