

Anti-RBBP4 Recombinant Rabbit Monoclonal Antibody



Catalog #: 4543

Aliases

RB Binding Protein 4, Chromatin Remodeling Factor; Retinoblastoma-Binding Protein 4; RbAp48; NURF55; Lin-53; Nucleosome-Remodeling Factor Subunit RBAP48; Chromatin Assembly Factor I P48 Subunit; Chromatin Assembly Factor 1 Subunit C; Retinoblastoma-Binding Protein P48; Histone-Binding Protein RBBP4; CAF-I 48 KDa Subunit; CAF-1 Subunit C; CAF-I P48; RBBP-4; Chromatin Assembly Factor/CAF-1 P48 Subunit; Retinoblastoma Binding Protein 4; MSI1 Protein Homolog; RBAP48

Background

Gene Name: RBBP4

NCBI Gene Entry: [5928](#)

UniProt Entry: [Q09028](#)

Application Information

Molecular Weight: Predicted, 48 kDa; observed, 52 kDa

Clonality: Rabbit monoclonal antibody

Clone ID: 24GB11745

Species Reactivity: Human, mouse, rat

Applications Tested: Western blotting (WB), flow cytometry (FCM), immunocytochemistry (IC)

Immunogen

A synthesized peptide derived from human RbAp48

Isotype

Rabbit IgG

Storage Buffer

Supplied in PBS (pH 7.4) containing 50% glycerol, and 0.02% sodium azide.

Storage

Store at -20 °C for one year.

Recommended Dilutions

Western Blotting (WB): 1:1,000-1:5,000

Flow Cytometry (FCM): 1:2,000

Immunocytochemistry (IC): 1:100-1:1,000

SUPPORT

SUPPORT@GENUINBIOTECH.COM
TEL: +1-540-855-7041

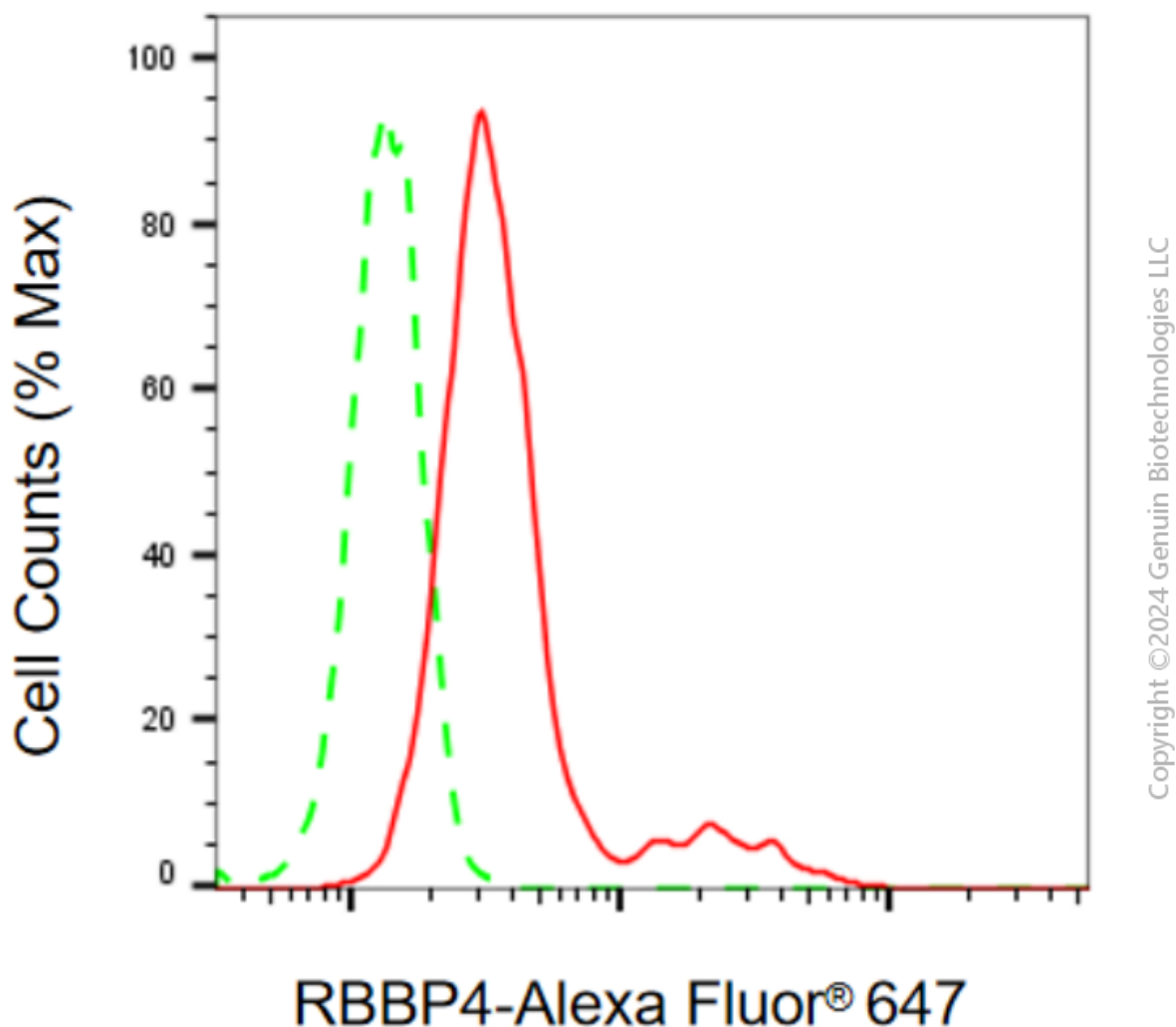
ORDERS

SALES@GENUINBIOTECH.COM
FAX: +1-540-855-7041

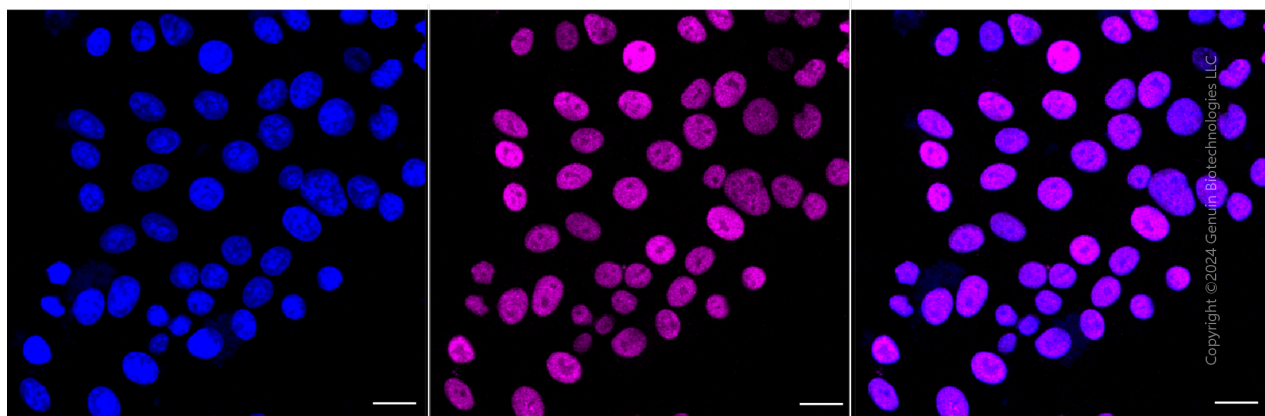
WWW.GENUINBIOTECH.COM

Note: This product is for research use only.

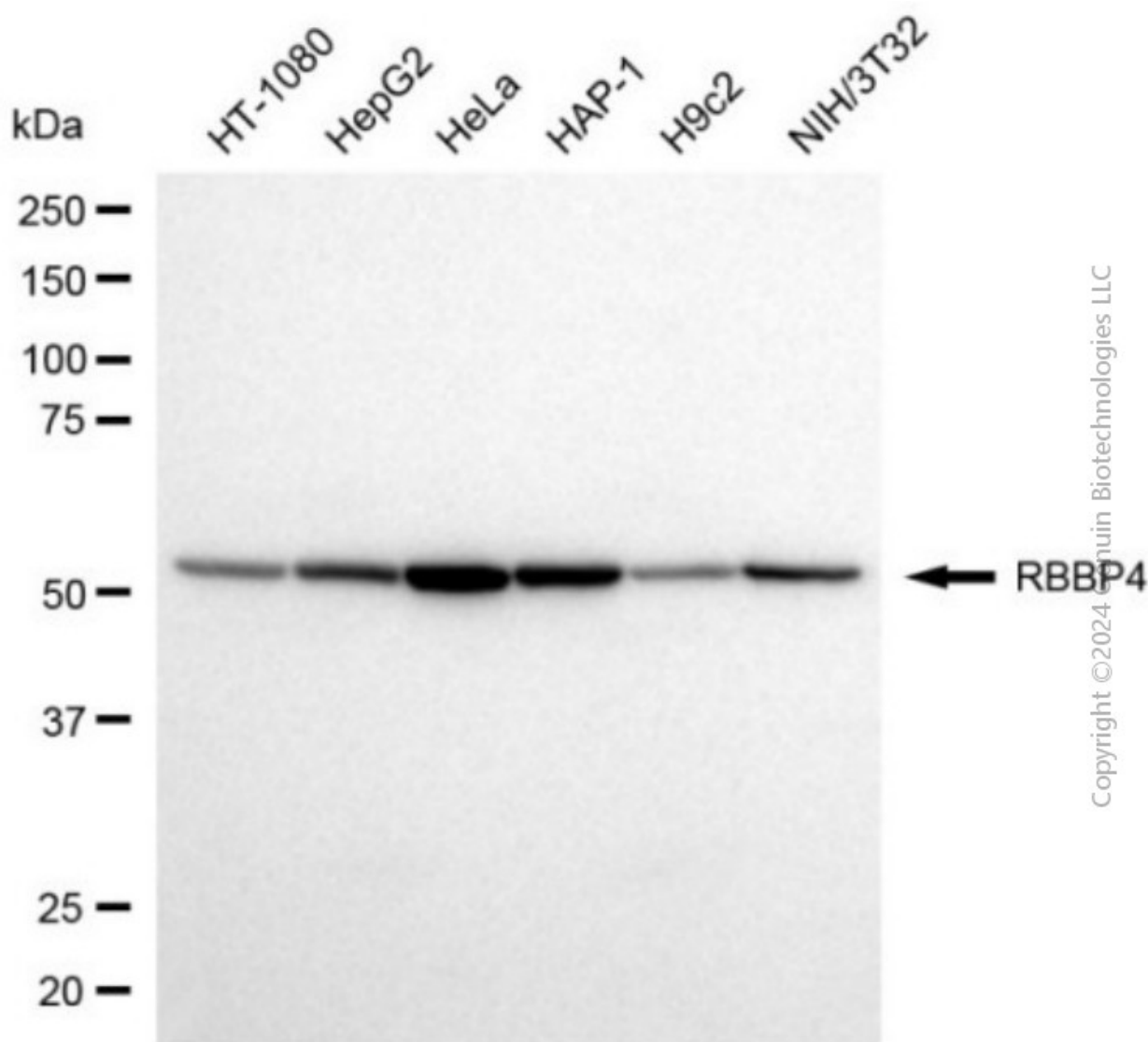
Validation Data



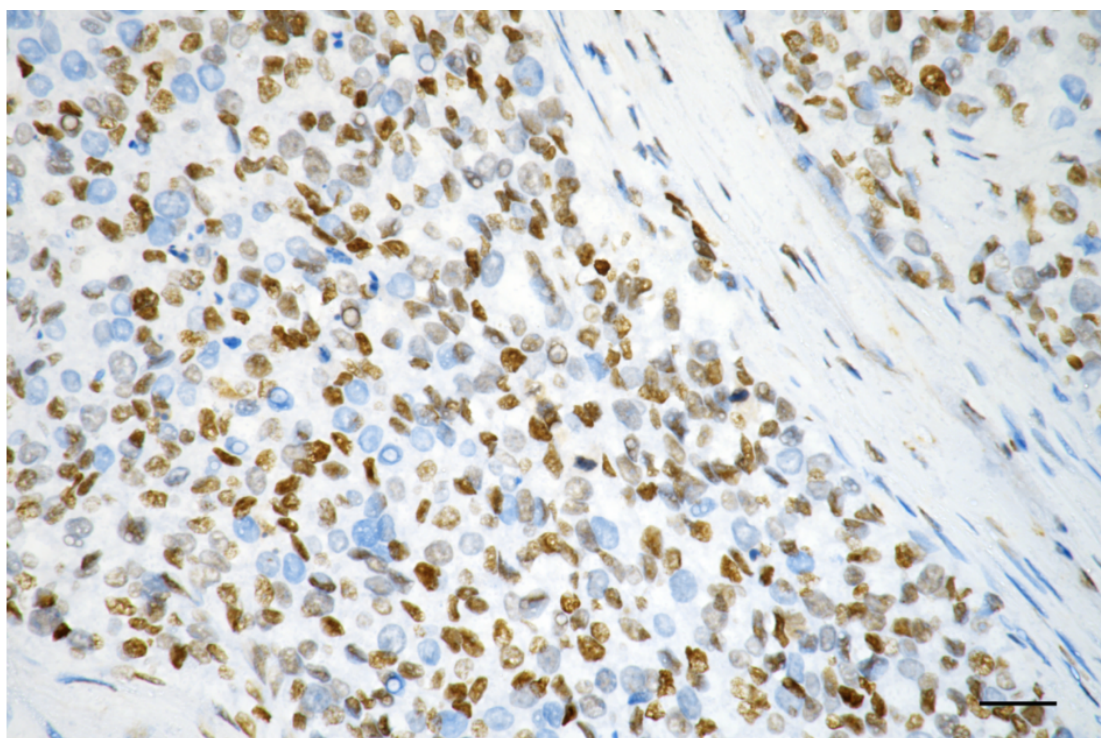
Flow cytometric analysis of RBBP4 expression in HepG2 cells using anti-RBBP4 antibody (Cat#4543, 1:2,000). Green, isotype control; red, RBBP4.



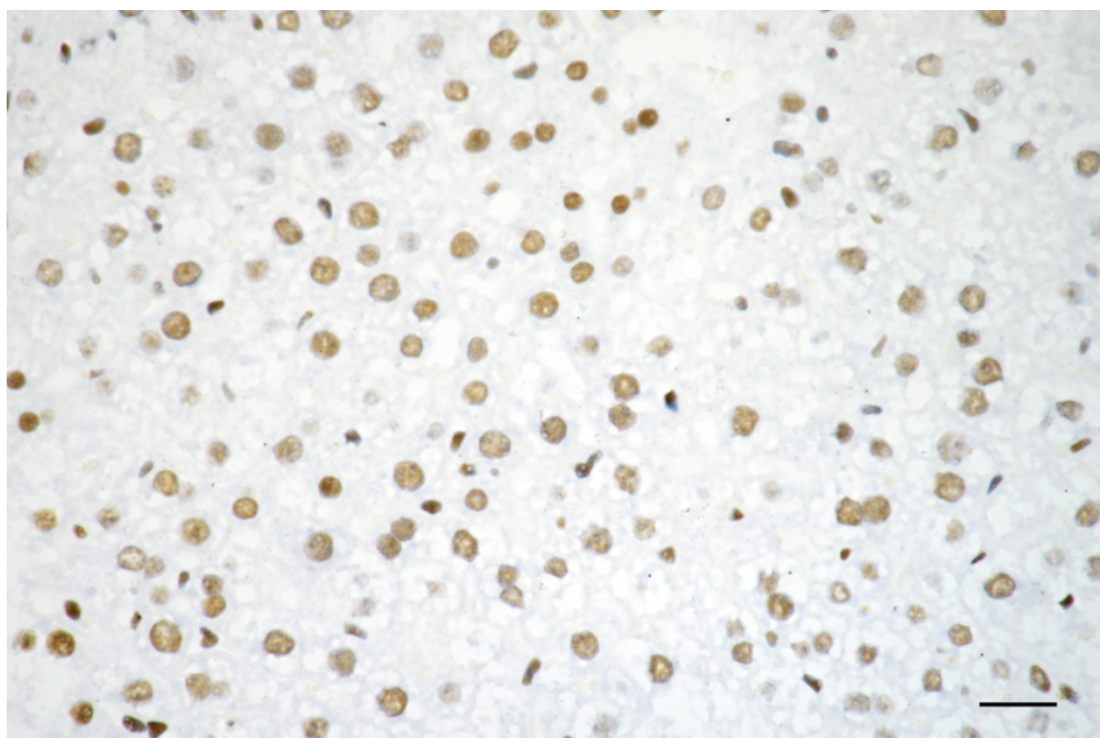
Immunocytochemical staining of HepG2 cells with anti-RBBP4 antibody (Cat#4543, 1:1,000). Nuclei were stained blue with DAPI; RBBP4 was stained magenta with Alexa Fluor® 647. Images were taken using Leica stellaris 5. Protein abundance based on laser Intensity and smart gain: Medium. Scale bar, 20 μ m.



Western blotting analysis using anti-RBBP4 antibody (Cat#4543). Total cell lysates (30 μ g) from various cell lines were loaded and separated by SDS-PAGE. The blot was incubated with anti-RBBP4 antibody (Cat#4543, 1:5,000) and HRP-conjugated goat anti-rabbit secondary antibody (Cat#201, 1:20,000) respectively. Image was developed using NaQ™ ECL Substrate Kit (Cat#716).



Immunohistochemistry was performed on paraffin-embedded mouse liver using anti-RBBP4 antibody (Cat#4543, 1:200). Antigen retrieval was done in sodium citrate buffer (pH 6.0). DAB was used for detection, with hematoxylin counterstaining. Images were acquired using a Nikon Ci-L Plus microscope (40× objective). Scale bar: 25 μ m.



Copyright ©2025 Genuin Biotechnologies LLC

SUPPORT

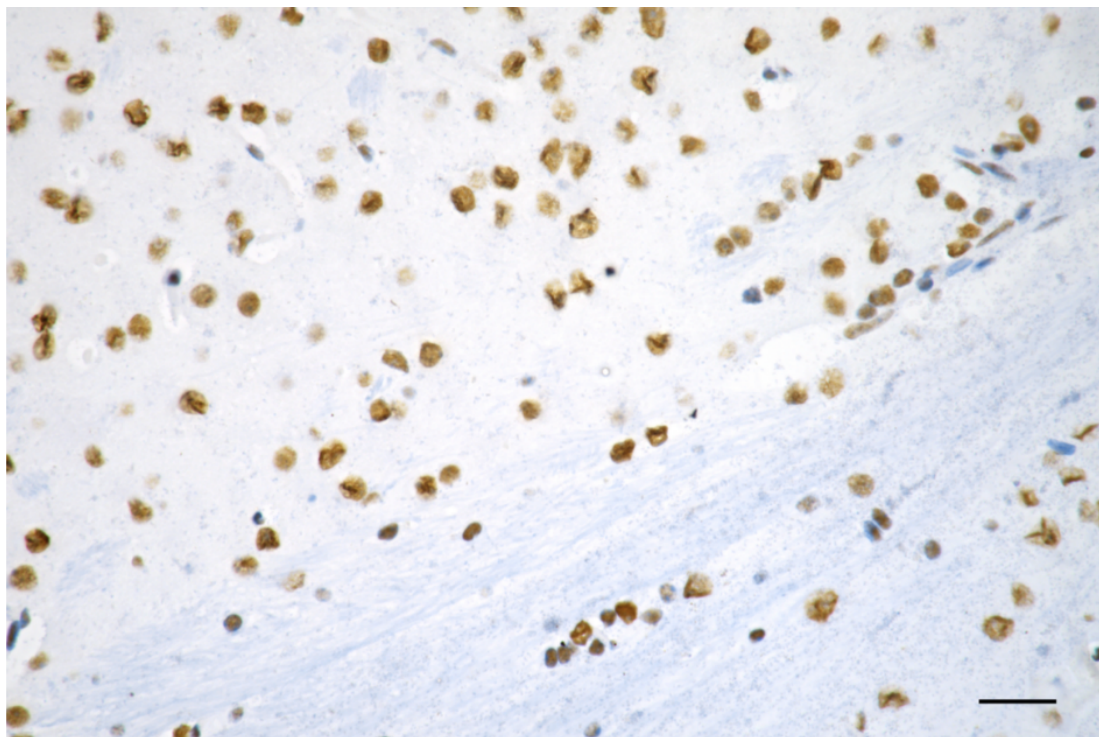
SUPPORT@GENUINBIOTECH.COM
TEL: +1-540-855-7041

ORDERS

SALES@GENUINBIOTECH.COM
FAX: +1-540-855-7041

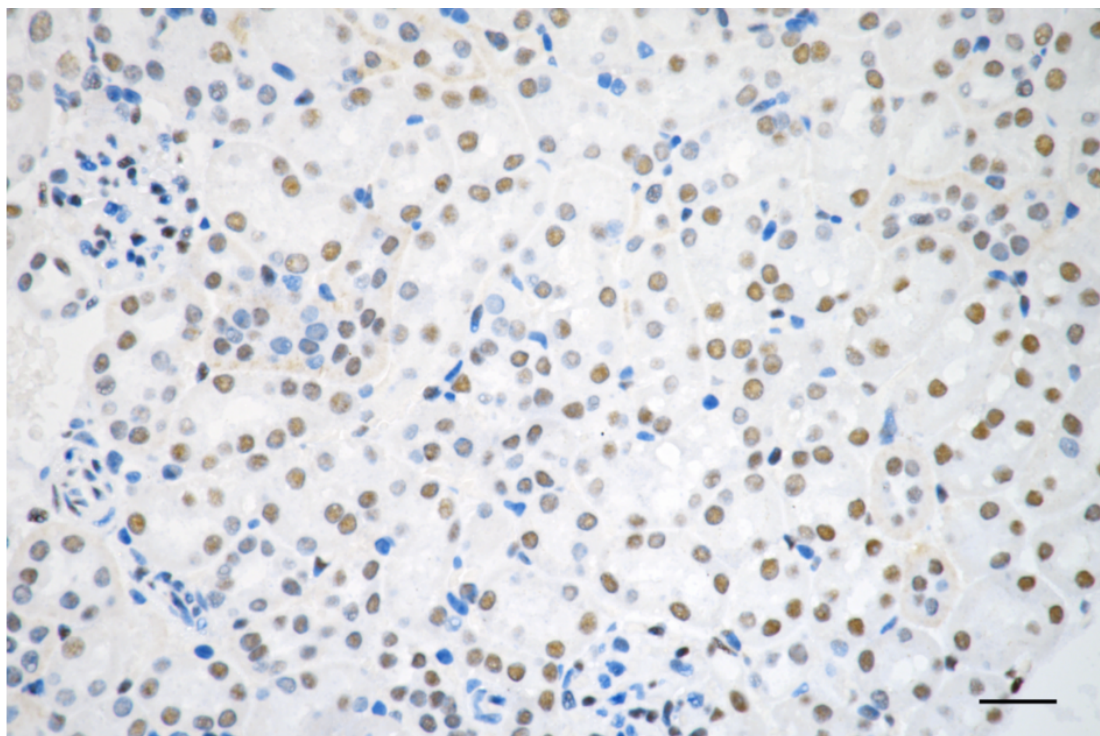
WWW.GENUINBIOTECH.COM

Immunohistochemistry was performed on paraffin-embedded mouse kidney using anti-RBBP4 antibody (Cat#4543, 1:200). Antigen retrieval was done in sodium citrate buffer (pH 6.0). DAB was used for detection, with hematoxylin counterstaining. Images were acquired using a Nikon Ci-L Plus microscope (40× objective). Scale bar: 25 μ m.



Copyright ©2025 Genuin Biotechnologies LLC

Immunohistochemistry was performed on paraffin-embedded mouse brain using anti-RBBP4 antibody (Cat#4543, 1:200). Antigen retrieval was done in sodium citrate buffer (pH 6.0). DAB was used for detection, with hematoxylin counterstaining. Images were acquired using a Nikon Ci-L Plus microscope (40× objective). Scale bar: 25 μ m.



Copyright ©2025 Genuin Biotechnologies LLC

Immunohistochemistry was performed on paraffin-embedded human breast carcinoma using anti-RBBP4 antibody (Cat#4543, 1:200). Antigen retrieval was done in sodium citrate buffer (pH 6.0). DAB was used for detection, with hematoxylin counterstaining. Images were acquired using a Nikon Ci-L Plus microscope (40× objective). Scale bar: 25 μ m.