

# Anti-B cell receptor associated protein 31 Recombinant Rabbit Monoclonal Antibody



**Catalog #: 4549**

## Aliases

BCAP31; B Cell Receptor Associated Protein 31; DXS1357E; BAP31; CDM; B-Cell Receptor-Associated Protein 31; 6C6-AG Tumor-Associated Antigen; 6C6-AG; BCR-Associated Protein Bap31; BCR-Associated Protein 31; MICRODELXq28; Protein CDM; P28 Bap31; DELXQ28; 6C6-Ag; Bap31; DDCH; P28

## Background

Gene Name: BCAP31

NCBI Gene Entry: [10134](#)

UniProt Entry: [P51572](#)

## Application Information

Molecular Weight: Predicted, 28 kDa; observed, 25 kDa

Clonality: Rabbit monoclonal antibody

Clone ID: 24GB11775

Species Reactivity: Human, mouse

Applications Tested: Western blotting (WB), flow cytometry (FCM), immunocytochemistry (IC)

## Immunogen

A synthesized peptide derived from human DHFR

## Isotype

Rabbit IgG

## Storage Buffer

Supplied in PBS (pH 7.4) containing 50% glycerol, and 0.02% sodium azide.

## Storage

Store at -20 °C for one year.

## Recommended Dilutions

Western Blotting (WB): 1:1,000-1:5,000

Flow Cytometry (FCM): 1:2,000

Immunocytochemistry (IC): 1:100-1:1,000

---

### SUPPORT

SUPPORT@GENUINBIOTECH.COM  
TEL: +1-540-855-7041

### ORDERS

SALES@GENUINBIOTECH.COM  
FAX: +1-540-855-7041

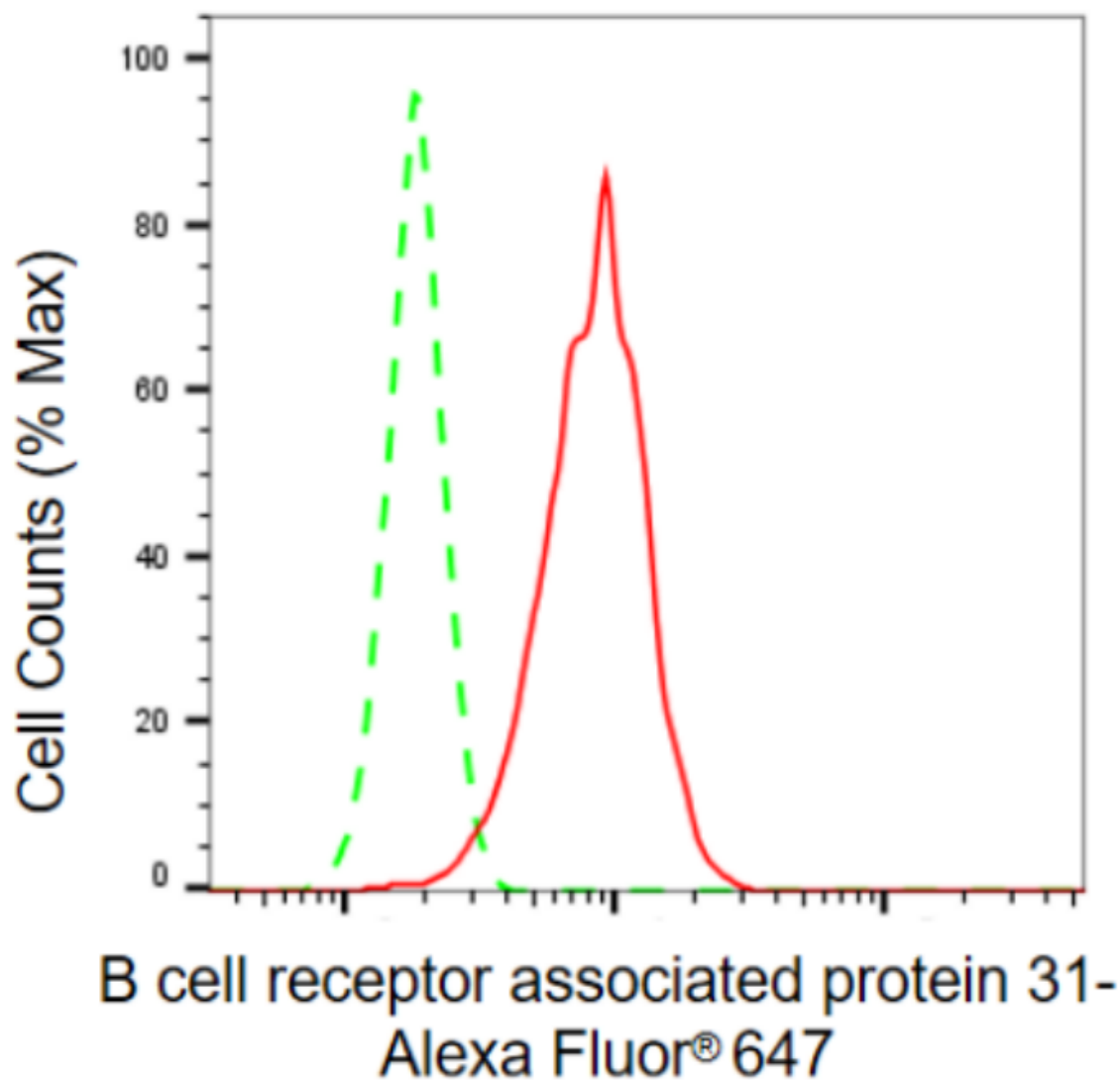
[WWW.GENUINBIOTECH.COM](http://WWW.GENUINBIOTECH.COM)

## Anti-B cell receptor associated protein 31 Recombinant Rabbit Monoclonal Antibody

PAGE 2

**Note:** This product is for research use only.

### Validation Data



Copyright ©2024 Genuin Biotechnologies LLC

Flow cytometric analysis of B cell receptor associated protein 31 expression in HepG2 cells using anti-B cell receptor associated protein 31 antibody (Cat#4549, 1:2,000). Green, isotype control; red, B cell receptor associated protein 31.

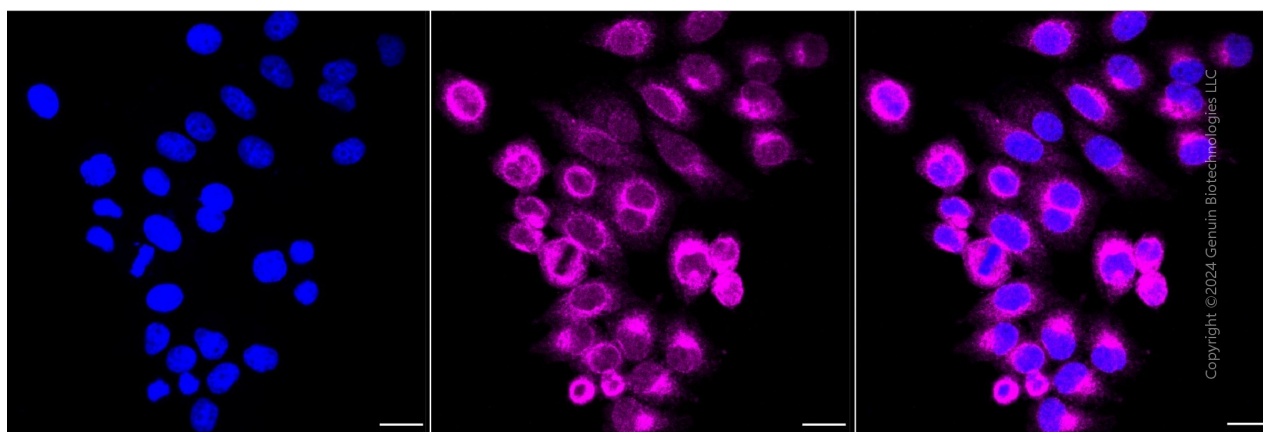
#### SUPPORT

SUPPORT@GENUINBIOTECH.COM  
TEL: +1-540-855-7041

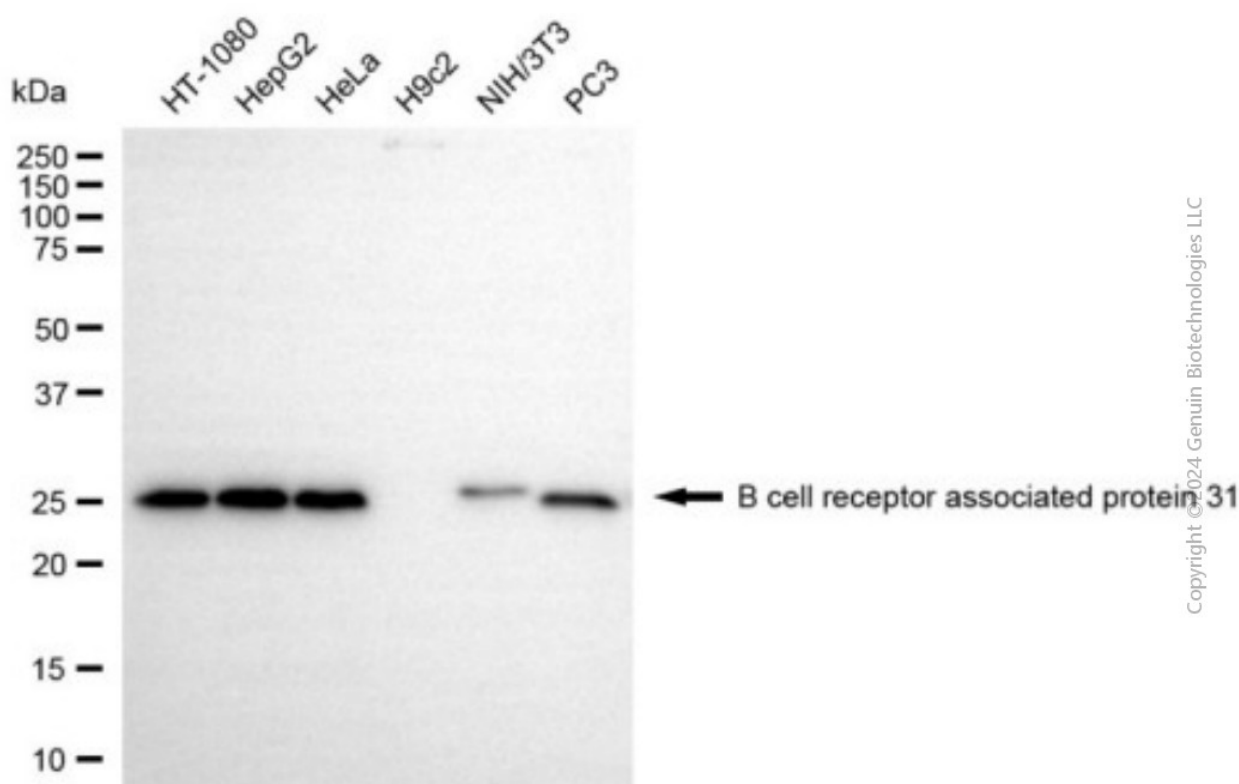
#### ORDERS

SALES@GENUINBIOTECH.COM  
FAX: +1-540-855-7041

[WWW.GENUINBIOTECH.COM](http://WWW.GENUINBIOTECH.COM)



Immunocytochemical staining of HepG2 cells with anti-B cell receptor associated protein 31 antibody (Cat#4549, 1:1,000) . Nuclei were stained blue with DAPI; B cell receptor associated protein 31 was stained magenta with Alexa Fluor® 647. Images were taken using Leica stellaris 5. Protein abundance based on laser Intensity and smart gain: Medium. Scale bar, 20  $\mu$ m.



Western blotting analysis using anti-B cell receptor associated protein 31 antibody (Cat#4549). Total cell lysates (30  $\mu$ g) from various cell lines were loaded and separated by SDS-PAGE. The blot was incubated with anti-B cell receptor associated protein 31 antibody (Cat#4549, 1:5,000) and HRP-conjugated goat anti-rabbit secondary antibody (Cat#201, 1:20,000) respectively. Image was developed using NaQ™ ECL Substrate Kit (Cat#716).