

Anti-Lamin B1 Recombinant Rabbit Monoclonal Antibody



Catalog #: 4551

Aliases

LMNB1; Lamin B1; Lamin-B1; LMN2; LMNB; MCPH26; ADLD; LMN

Background

Gene Name: LMNB1

NCBI Gene Entry: [4001](#)

UniProt Entry: [P20700](#)

Application Information

Molecular Weight: Predicted, 66 kDa; observed, 70 kDa

Clonality: Rabbit monoclonal antibody

Clone ID: 23GB915

Species Reactivity: Human, mouse, rat

Applications Tested: Western blotting (WB), flow cytometry (FCM), immunocytochemistry (IC)

Immunogen

A synthesized peptide derived from human Lamin B1

Isotype

Rabbit IgG

Storage Buffer

Supplied in PBS (pH 7.4) containing 50% glycerol, and 0.02% sodium azide.

Storage

Store at -20 °C for one year.

Recommended Dilutions

Western Blotting (WB): 1:2,000-1:10,000

Flow Cytometry (FCM): 1:2,000

Immunocytochemistry (IC): 1:100-1:1,000

Note: This product is for research use only.

Validation Data

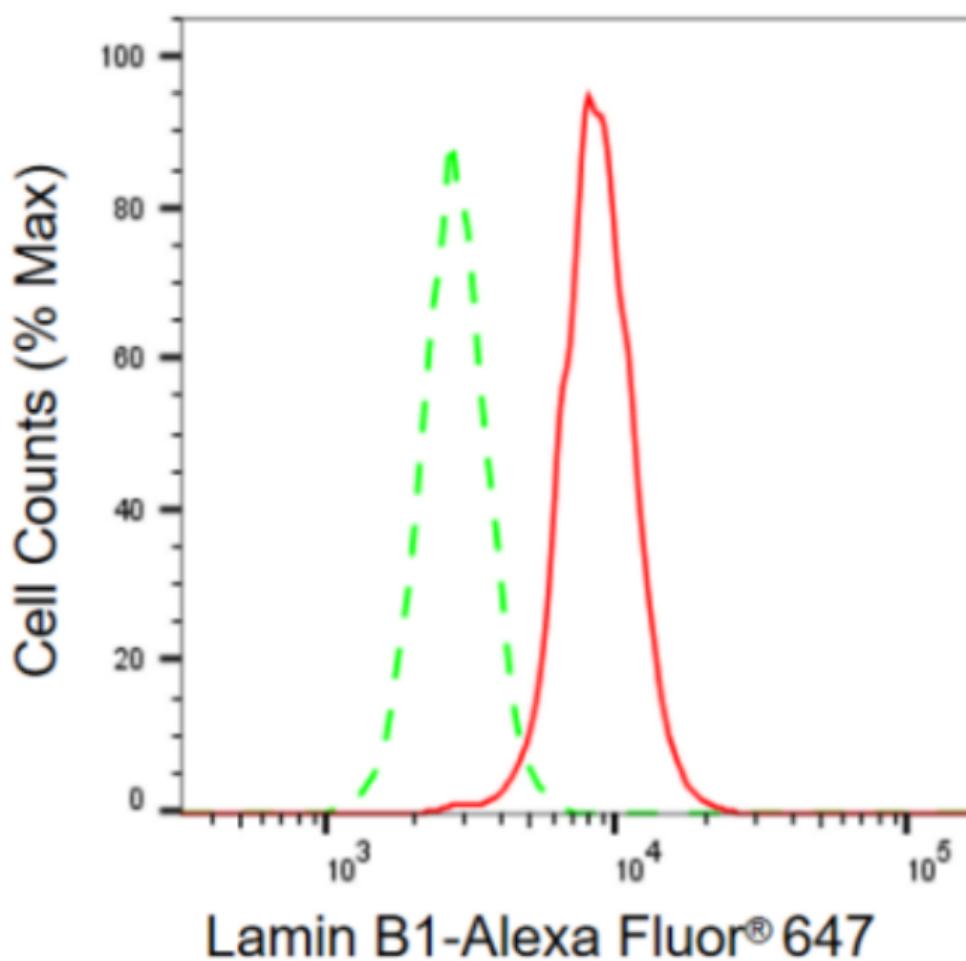
SUPPORT

SUPPORT@GENUINBIOTECH.COM
TEL: +1-540-855-7041

ORDERS

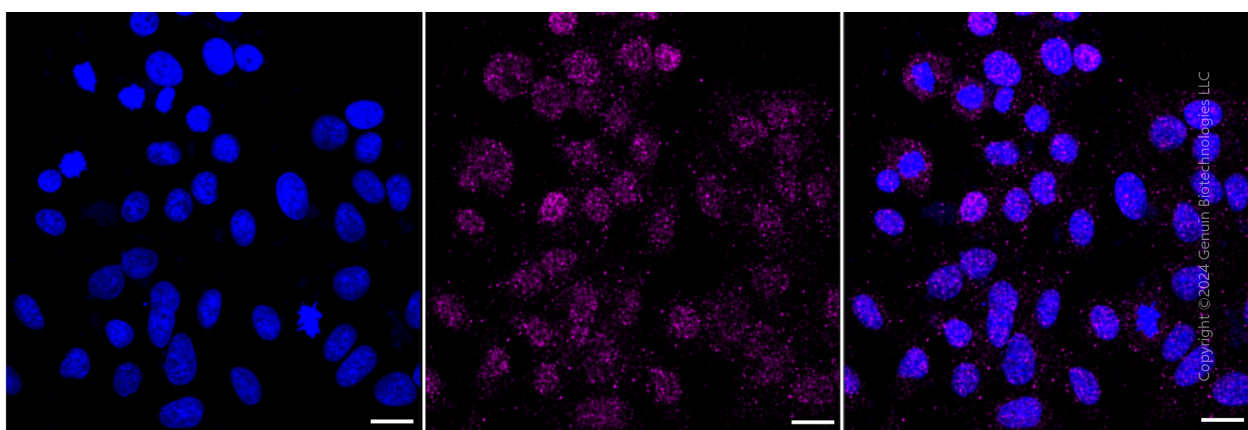
SALES@GENUINBIOTECH.COM
FAX: +1-540-855-7041

WWW.GENUINBIOTECH.COM



Copyright ©2024 Genuin Biotechnologies LLC

Flow cytometric analysis of Lamin B1 expression in C2C12 cells using Lamin B1 antibody (Cat#4551, 1:2,000). Green, isotype control; red, Lamin B1.



Immunocytochemical staining of HepG2 cells with anti-Lamin B1 antibody (Cat#4551, 1:1,000). Nuclei were stained blue with DAPI; Lamin B1 was stained magenta with Alexa Fluor® 647. Images were taken using Leica stellaris 5. Protein abundance based on laser Intensity and smart

SUPPORT

SUPPORT@GENUINBIOTECH.COM
TEL: +1-540-855-7041

ORDERS

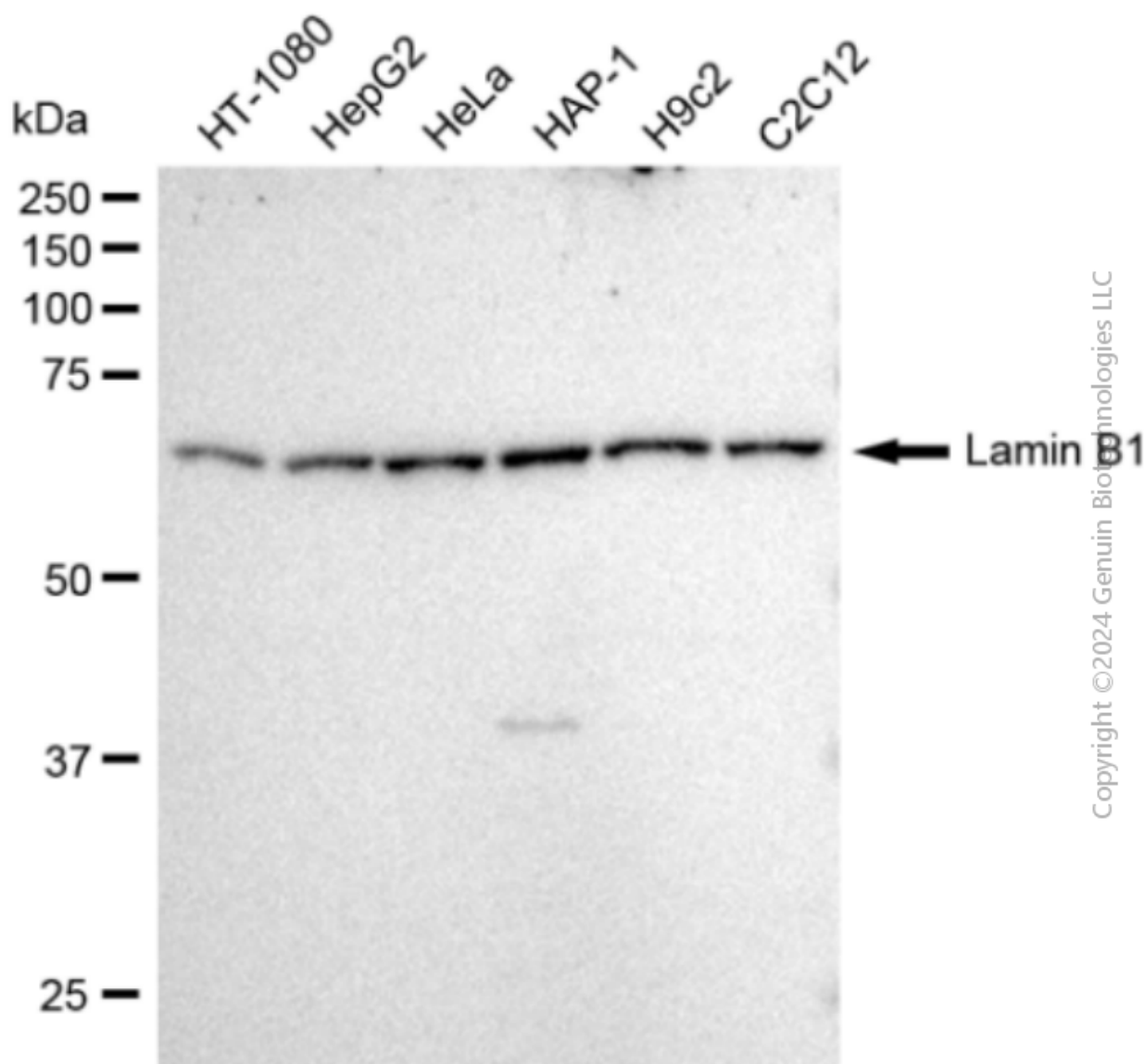
SALES@GENUINBIOTECH.COM
FAX: +1-540-855-7041

WWW.GENUINBIOTECH.COM

Anti-Lamin B1 Recombinant Rabbit Monoclonal Antibody

PAGE 3

gain: Low. Scale bar: 20 μ m.



Western blotting analysis using anti-Lamin B1 antibody (Cat#4551). Total cell lysates (30 μ g) from various cell lines were loaded and separated by SDS-PAGE. The blot was incubated with anti-Lamin B1 antibody (Cat#4551, 1:10,000) and HRP-conjugated goat anti rabbit secondary antibody (Cat#201, 1:50,000) respectively. Image was developed using FeQ™ ECL Substrate Kit (Cat#226).

SUPPORT

SUPPORT@GENUINBIOTECH.COM
TEL: +1-540-855-7041

ORDERS

SALES@GENUINBIOTECH.COM
FAX: +1-540-855-7041

WWW.GENUINBIOTECH.COM