

# Anti-SDHC Recombinant Rabbit Monoclonal Antibody



**Catalog #: 4555**

## Aliases

SDHC; Succinate Dehydrogenase Complex Subunit C; CYB560; CybL; Succinate Dehydrogenase Complex, Subunit C, Integral Membrane Protein, 15kD; Succinate Dehydrogenase Cytochrome B560 Subunit, Mitochondrial; Succinate-Ubiquinone Oxidoreductase Cytochrome B Large Subunit; Malate Dehydrogenase [Quinone] Cytochrome B560 Subunit; Succinate Dehydrogenase Cytochrome B; Large Subunit Of Cytochrome B; PGL3; SDH3; Succinate Dehydrogenase Complex, Subunit C, Integral Membrane Protein, 15kDa; Succinate Dehydrogenase Complex Subunit C Integral Membrane Protein 15kDa; Succinate Dehydrogenase 3, Integral Membrane Subunit; Succinate Dehydrogenase Cytochrome B560 Subunit; Cytochrome B Large Subunit Of Complex II; Integral Membrane Protein CII-3b; Integral Membrane Protein CII-3; PPGL3; QPs-1; QPS1; QPs1; CYBL

## Background

Gene Name: SDHC

NCBI Gene Entry: [6391](#)

UniProt Entry: [Q99643](#)

## Application Information

Molecular Weight: Predicted, 18 kDa; observed, 12 kDa

Clonality: Rabbit monoclonal antibody

Clone ID: 24GB11800

Species Reactivity: Human, mouse, rat

Applications Tested: Western blotting (WB), immunocytochemistry (IC)

## Immunogen

A synthesized peptide derived from human SDHC

## Isotype

Rabbit IgG

## Storage Buffer

Supplied in PBS (pH 7.4) containing 50% glycerol, and 0.02% sodium azide.

## Storage

Store at -20 °C for one year.

---

### SUPPORT

SUPPORT@GENUINBIOTECH.COM  
TEL: +1-540-855-7041

### ORDERS

SALES@GENUINBIOTECH.COM  
FAX: +1-540-855-7041

[WWW.GENUINBIOTECH.COM](http://WWW.GENUINBIOTECH.COM)

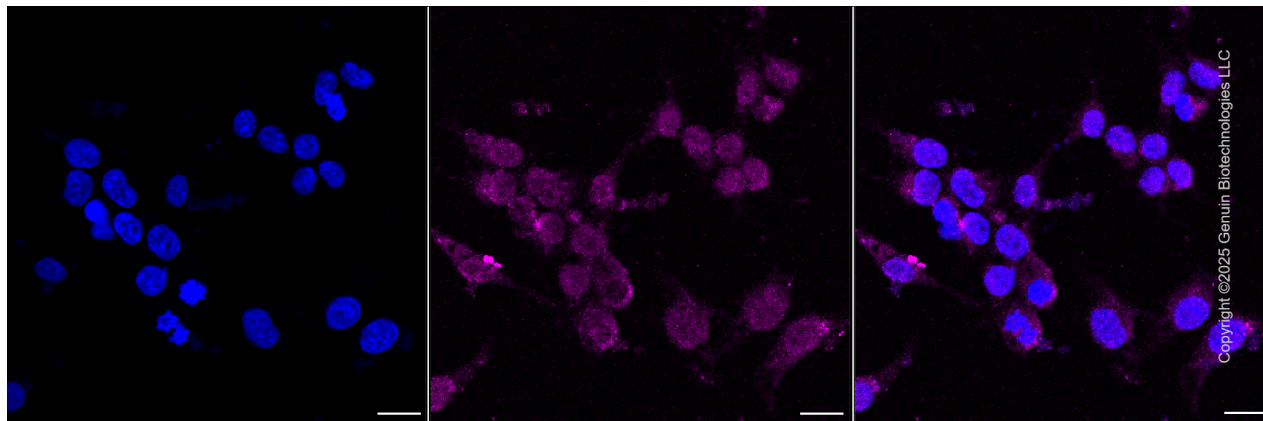
## Recommended Dilutions

Western Blotting (WB): 1:1,000-1:5,000

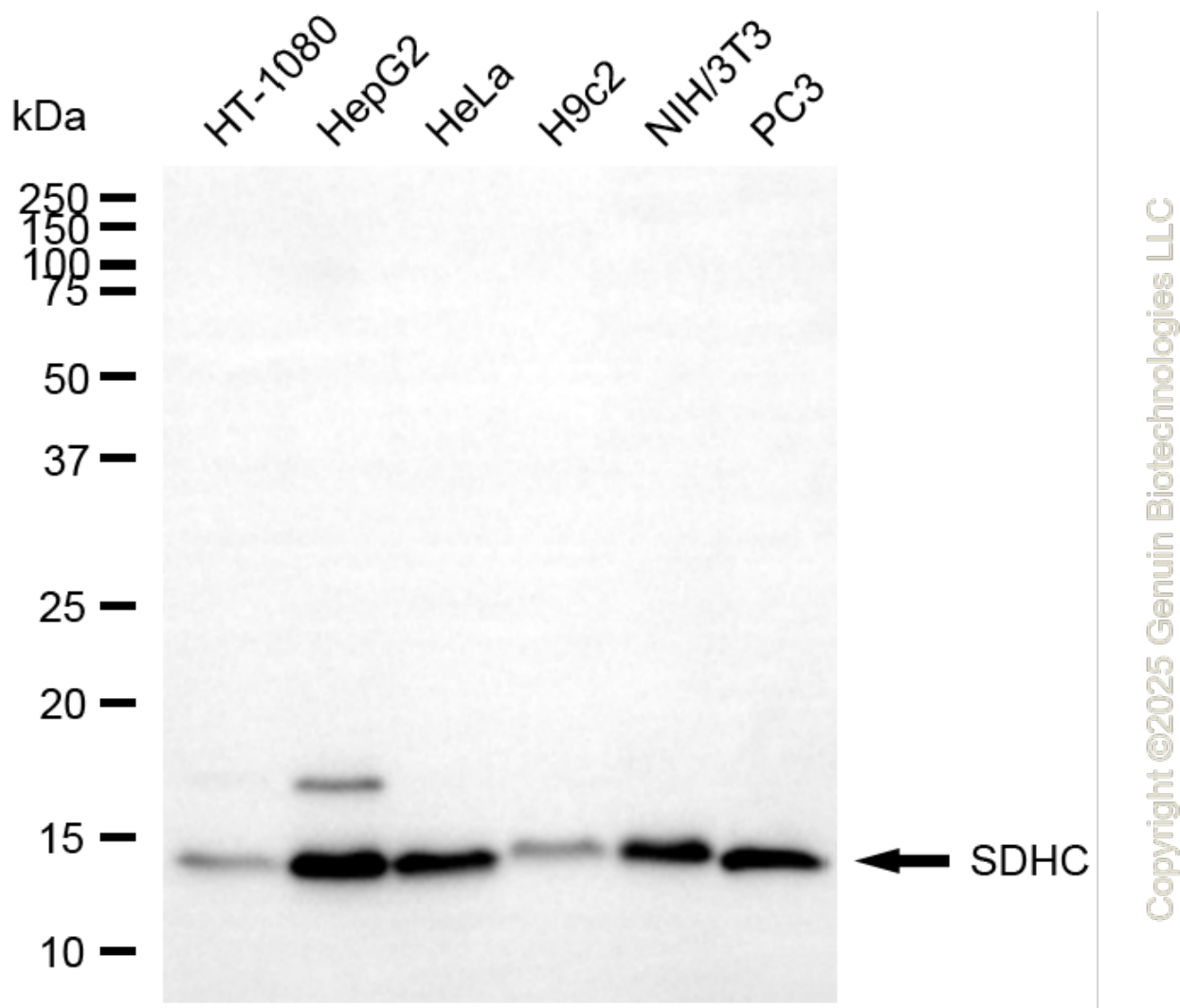
Immunocytochemistry (IC): 1:100-1:1,000

**Note:** This product is for research use only.

## Validation Data



Immunocytochemical staining of HeLa cells with anti-SDHC antibody (Cat#4555, 1:1,000) . Nuclei were stained blue with DAPI; SDHC was stained magenta with Alexa Fluor® 647. Images were taken using Leica stellaris 5. Protein abundance based on laser Intensity and smart gain: Low. Scale bar, 20  $\mu$ m.



Western blotting analysis using anti-SDHC antibody (Cat#4555). Total cell lysates (30  $\mu$ g) from various cell lines were loaded and separated by SDS-PAGE. The blot was incubated with anti-SDHC antibody (Cat#4555, 1:5,000) and HRP-conjugated goat anti-rabbit secondary antibody (Cat#201, 1:20,000) respectively. Image was developed using FeQ™ ECL Substrate Kit (Cat#226).