

Anti-Syntaxin binding protein 1 Recombinant Rabbit Monoclonal Antibody



Catalog #: 4558

Aliases

STXBP1; Syntaxin Binding Protein 1; MUNC18-1; Syntaxin-Binding Protein 1; UNC18; Protein Unc-18 Homolog 1; Protein Unc-18 Homolog A; Unc-18A; Unc18-1; HUNC18; N-Sec1; RBSEC1; NSEC1; P67; Neuronal SEC1; RbSec1; UNC18A; NSec1; DEE4

Background

Gene Name: STXBP1

NCBI Gene Entry: [6812](#)

UniProt Entry: [P61764](#)

Application Information

Molecular Weight: Predicted, 68 kDa; observed, 68 kDa

Clonality: Rabbit monoclonal antibody

Clone ID: 24GB11815

Species Reactivity: Human, mouse, rat

Applications Tested: Western blotting (WB), flow cytometry (FCM), immunocytochemistry (IC)

Immunogen

A synthesized peptide derived from human STXBP1

Isotype

Rabbit IgG

Storage Buffer

Supplied in PBS (pH 7.4) containing 50% glycerol, and 0.02% sodium azide.

Storage

Store at -20 °C for one year.

Recommended Dilutions

Western Blotting (WB): 1:1,000-1:5,000

Flow Cytometry (FCM): 1:2,000

Immunocytochemistry (IC): 1:100-1:1,000

Note: This product is for research use only.

SUPPORT

SUPPORT@GENUINBIOTECH.COM
TEL: +1-540-855-7041

ORDERS

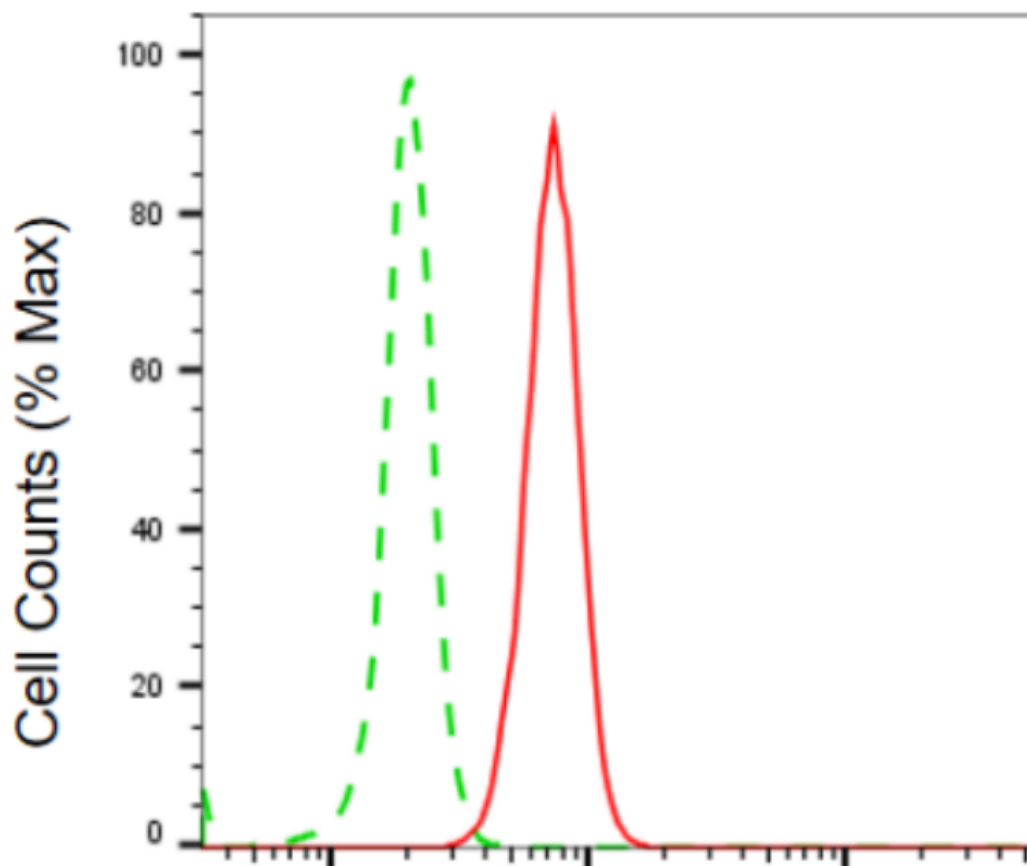
SALES@GENUINBIOTECH.COM
FAX: +1-540-855-7041

WWW.GENUINBIOTECH.COM

Anti-Syntaxin binding protein 1 Recombinant Rabbit Monoclonal Antibody

PAGE 2

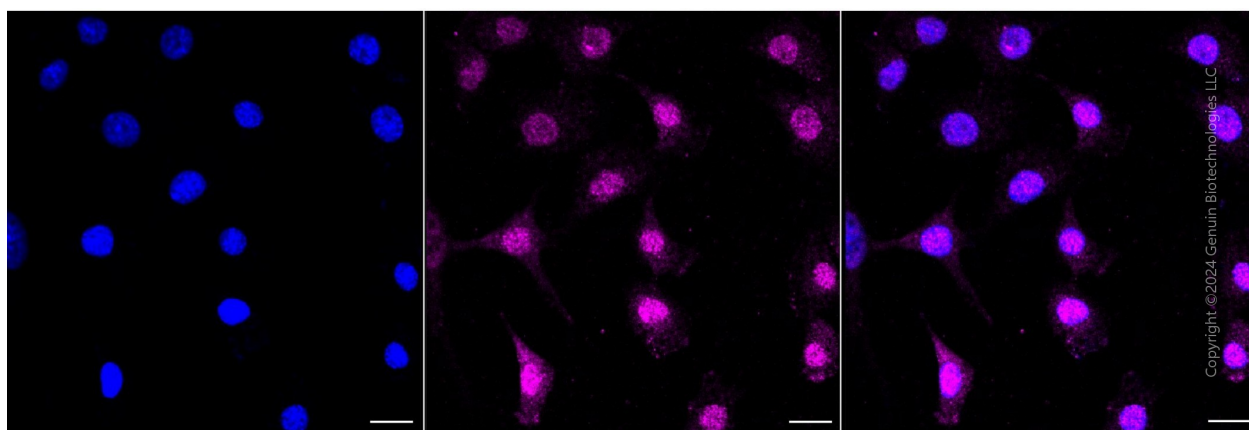
Validation Data



Copyright ©2024 Genuin Biotechnologies LLC

Syntaxin binding protein 1-Alexa Fluor® 647

Flow cytometric analysis of syntaxin binding protein 1 expression in C2C12 cells using anti-syntaxin binding protein 1 antibody (Cat#4558, 1:2,000). Green, isotype control; red, syntaxin binding protein 1.



Copyright ©2024 Genuin Biotechnologies LLC

SUPPORT

SUPPORT@GENUINBIOTECH.COM
TEL: +1-540-855-7041

ORDERS

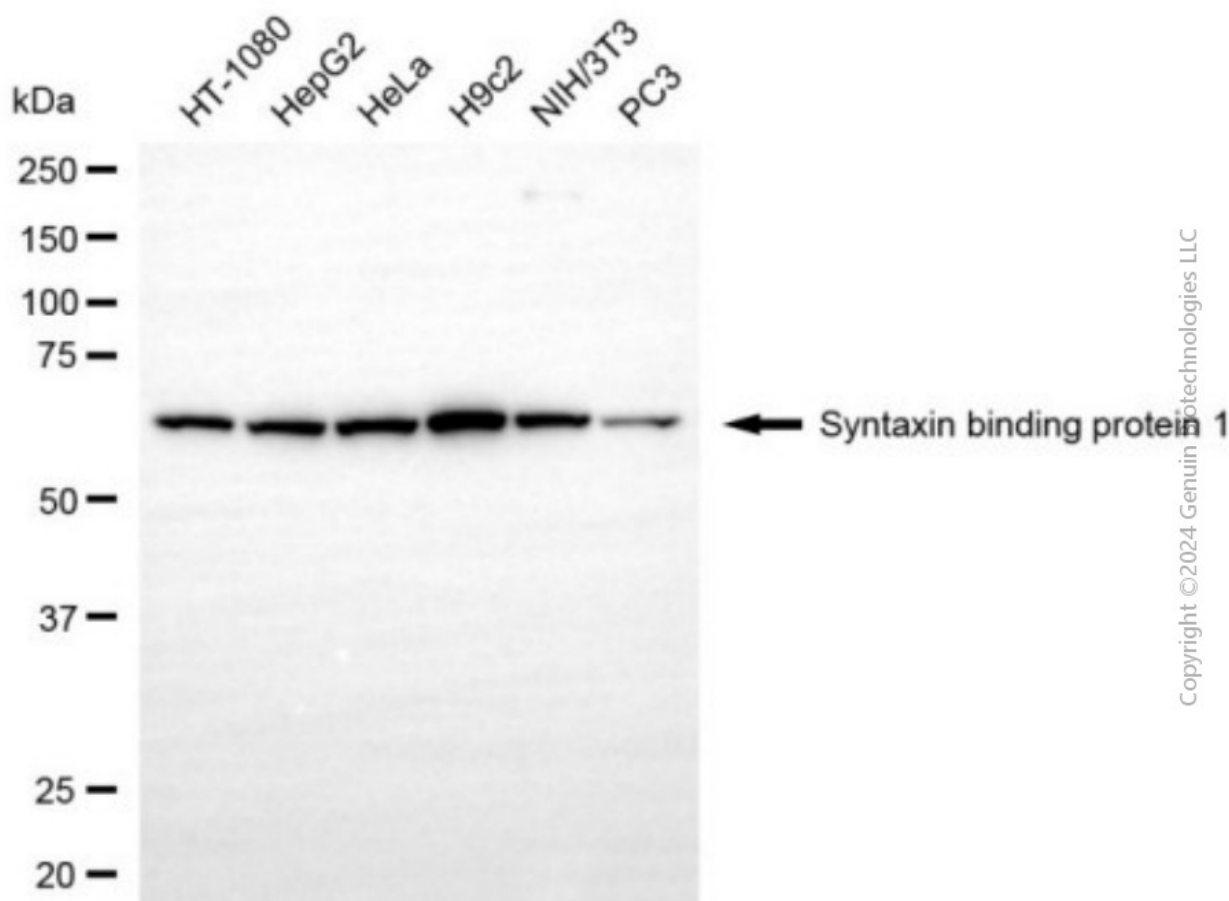
SALES@GENUINBIOTECH.COM
FAX: +1-540-855-7041

WWW.GENUINBIOTECH.COM

Anti-Syntaxin binding protein 1 Recombinant Rabbit Monoclonal Antibody

PAGE 3

Immunocytochemical staining of C2C12 cells with anti-Syntaxin binding protein 1 antibody (Cat#4558, 1:1,000). Nuclei were stained blue with DAPI; Syntaxin binding protein 1 was stained magenta with Alexa Fluor® 647. Images were taken using Leica stellaris 5. Protein abundance based on laser Intensity and smart gain: Medium. Scale bar, 20 μ m.



Copyright ©2024 Genuin Biotechnologies LLC

Western blotting analysis using anti-syntaxin binding protein 1 antibody (Cat#4558). Total cell lysates (30 μ g) from various cell lines were loaded and separated by SDS-PAGE. The blot was incubated with anti-syntaxin binding protein 1 antibody (Cat#4558, 1:5,000) and HRP-conjugated goat anti-rabbit secondary antibody (Cat#201, 1:20,000) respectively. Image was developed using NaQ™ ECL Substrate Kit (Cat#716).

SUPPORT

SUPPORT@GENUINBIOTECH.COM
TEL: +1-540-855-7041

ORDERS

SALES@GENUINBIOTECH.COM
FAX: +1-540-855-7041

WWW.GENUINBIOTECH.COM