

Anti-TNF Receptor Associated Protein 1 Recombinant Rabbit Monoclonal Antibody



Catalog #: 4563

Aliases

TRAP1; TNF Receptor Associated Protein 1; HSP75; HSP90L; Tumor Necrosis Factor Type 1 Receptor-Associated Protein; Heat Shock Protein 75 KDa, Mitochondrial; TNFR-Associated Protein 1; HSP 75; TRAP-1; TNF Receptor-Associated Protein 1; Testicular Tissue Protein Li 209

Background

Gene Name: TRAP1

NCBI Gene Entry: [10131](#)

UniProt Entry: [Q12931](#)

Application Information

Molecular Weight: Predicted, 80 kDa; observed, 75 kDa

Clonality: Rabbit monoclonal antibody

Clone ID: 24GB11840

Species Reactivity: Human, mouse

Applications Tested: Western blotting (WB), flow cytometry (FCM), immunocytochemistry (IC)

Immunogen

A synthesized peptide derived from human TRAP1

Isotype

Rabbit IgG

Storage Buffer

Supplied in PBS (pH 7.4) containing 50% glycerol, and 0.02% sodium azide.

Storage

Store at -20 °C for one year.

Recommended Dilutions

Western Blotting (WB): 1:1,000-1:5,000

Flow Cytometry (FCM): 1:2,000

Immunocytochemistry (IC): 1:100-1:1,000

Note: This product is for research use only.

SUPPORT

SUPPORT@GENUINBIOTECH.COM
TEL: +1-540-855-7041

ORDERS

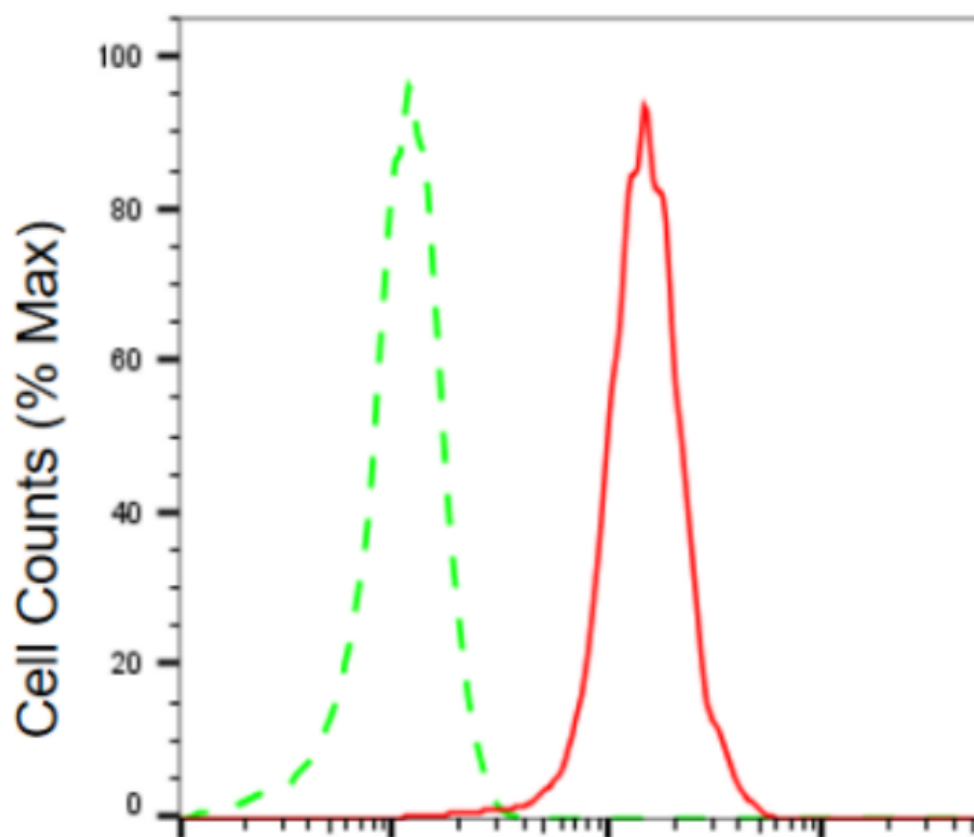
SALES@GENUINBIOTECH.COM
FAX: +1-540-855-7041

WWW.GENUINBIOTECH.COM

Anti-TNF Receptor Associated Protein 1 Recombinant Rabbit Monoclonal Antibody

PAGE 2

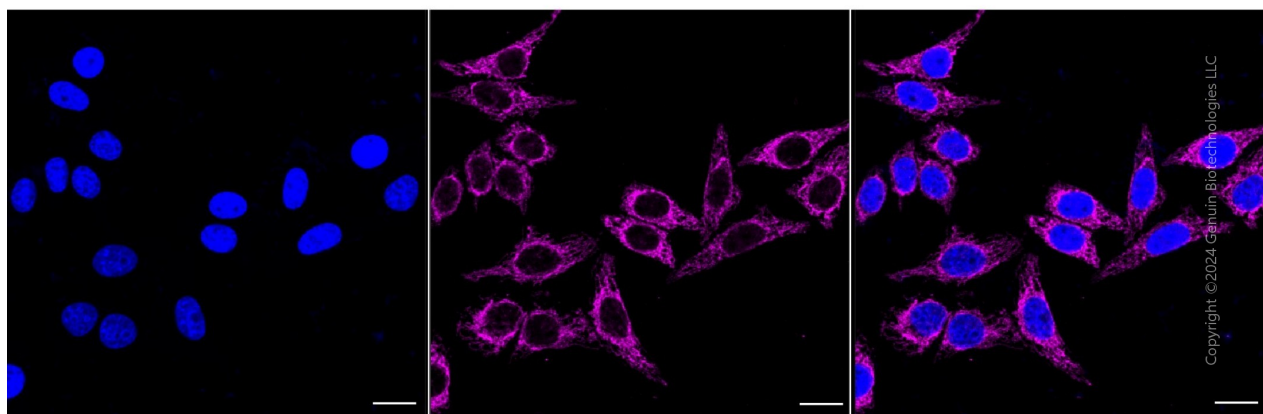
Validation Data



Copyright ©2024 Genuin Biotechnologies LLC

TNF receptor associated protein 1-Alexa Fluor®
647

Flow cytometric analysis of TNF receptor associated protein 1 expression in HepG2 cells using anti-TNF receptor associated protein 1 antibody (Cat#4563, 1:2,000). Green, isotype control; red, TNF receptor associated protein 1.



Copyright ©2024 Genuin Biotechnologies LLC

SUPPORT

SUPPORT@GENUINBIOTECH.COM
TEL: +1-540-855-7041

ORDERS

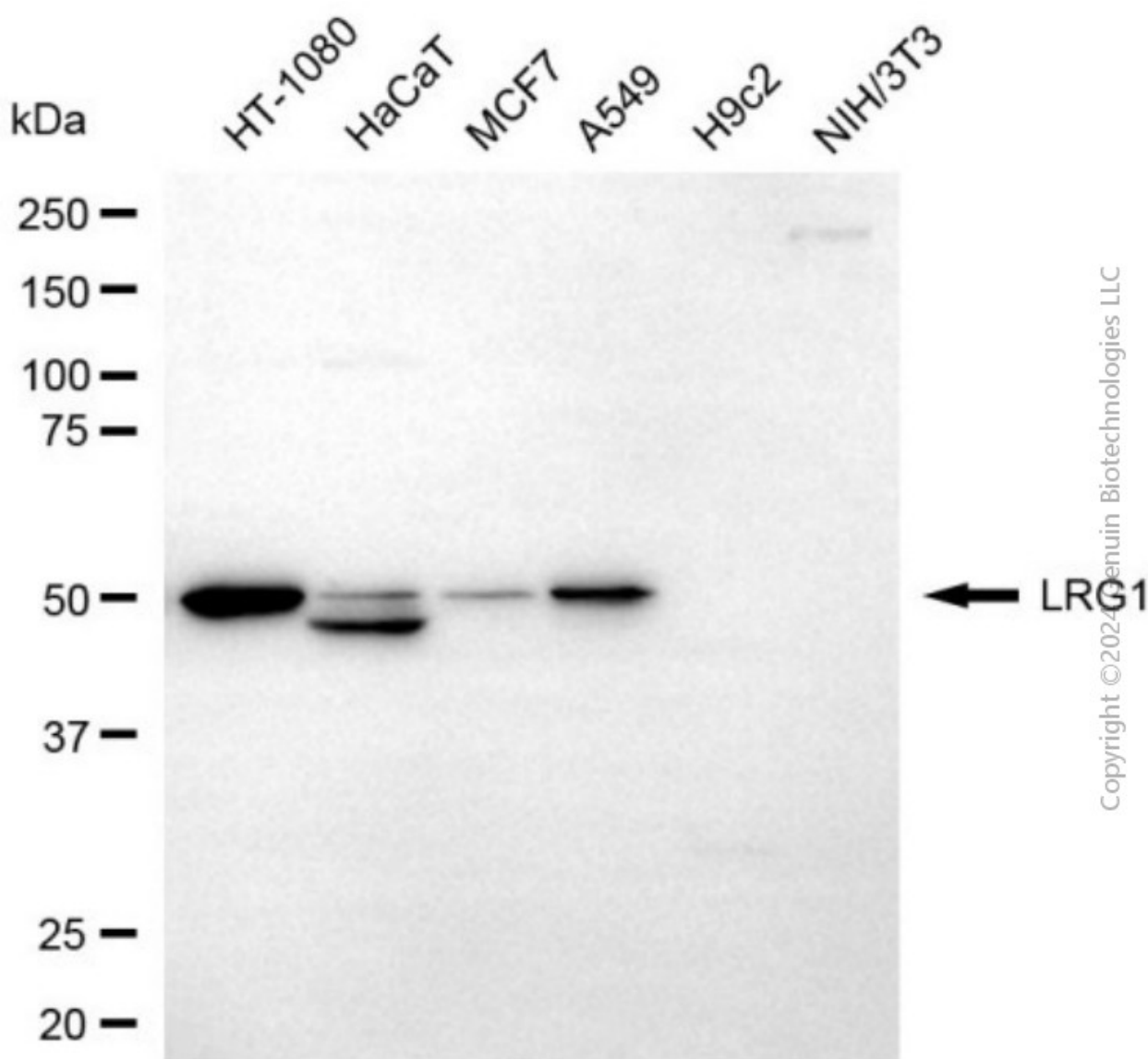
SALES@GENUINBIOTECH.COM
FAX: +1-540-855-7041

WWW.GENUINBIOTECH.COM

Anti-TNF Receptor Associated Protein 1 Recombinant Rabbit Monoclonal Antibody

PAGE 3

Immunocytochemical staining of HepG2 cells with anti-TNF receptor associated protein 1 antibody (Cat#4563, 1:1,000). Nuclei were stained blue with DAPI; TNF receptor associated protein 1 was stained magenta with Alexa Fluor® 647. Images were taken using Leica stellaris 5. Protein abundance based on laser Intensity and smart gain: High. Scale bar, 20 µm.



Western blotting analysis using anti-TNF receptor associated protein 1 antibody (Cat#4563). Total cell lysates (30 µg) from various cell lines were loaded and separated by SDS-PAGE. The blot was incubated with anti-TNF receptor associated protein 1 antibody (Cat#4563, 1:5,000) and HRP-conjugated goat anti-rabbit secondary antibody (Cat#201, 1:20,000) respectively. Image was developed using NaQ™ ECL Substrate Kit (Cat#716).

SUPPORT

SUPPORT@GENUINBIOTECH.COM
TEL: +1-540-855-7041

ORDERS

SALES@GENUINBIOTECH.COM
FAX: +1-540-855-7041

WWW.GENUINBIOTECH.COM