

# Anti-CHAF1B Recombinant Rabbit Monoclonal Antibody



**Catalog #: 4568**

## Aliases

CHAF1B; Chromatin Assembly Factor 1 Subunit B; MPHOSPH7; CAF1P60; CAF1A; MPP7; M-Phase Phosphoprotein 7; CAF-1; CAF1; Human Chromatin Assembly Factor-I P60 Subunit; Chromatin Assembly Factor I P60 Subunit; CAF-I 60 KDa Subunit; CAF-1 Subunit B; CAF-I P60; Chromatin Assembly Factor 1, Subunit B (P60); Chromatin Assembly Factor I, P60 Subunit; CAF-IP60

## Background

Gene Name: CHAF1B

NCBI Gene Entry: [8208](#)

UniProt Entry: [Q13112](#)

## Application Information

Molecular Weight: Predicted, 61 kDa; observed, 70 kDa

Clonality: Rabbit monoclonal antibody

Clone ID: 24GB11865

Species Reactivity: Human

Applications Tested: Western blotting (WB), flow cytometry (FCM), immunocytochemistry (IC)

## Immunogen

A synthesized peptide derived from human p60 CAF1

## Isotype

Rabbit IgG

## Storage Buffer

Supplied in PBS (pH 7.4) containing 50% glycerol, and 0.02% sodium azide.

## Storage

Store at -20 °C for one year.

## Recommended Dilutions

Western Blotting (WB): 1:1,000-1:5,000

Flow Cytometry (FCM): 1:2,000

Immunocytochemistry (IC): 1:100-1:1,000

---

### SUPPORT

SUPPORT@GENUINBIOTECH.COM  
TEL: +1-540-855-7041

### ORDERS

SALES@GENUINBIOTECH.COM  
FAX: +1-540-855-7041

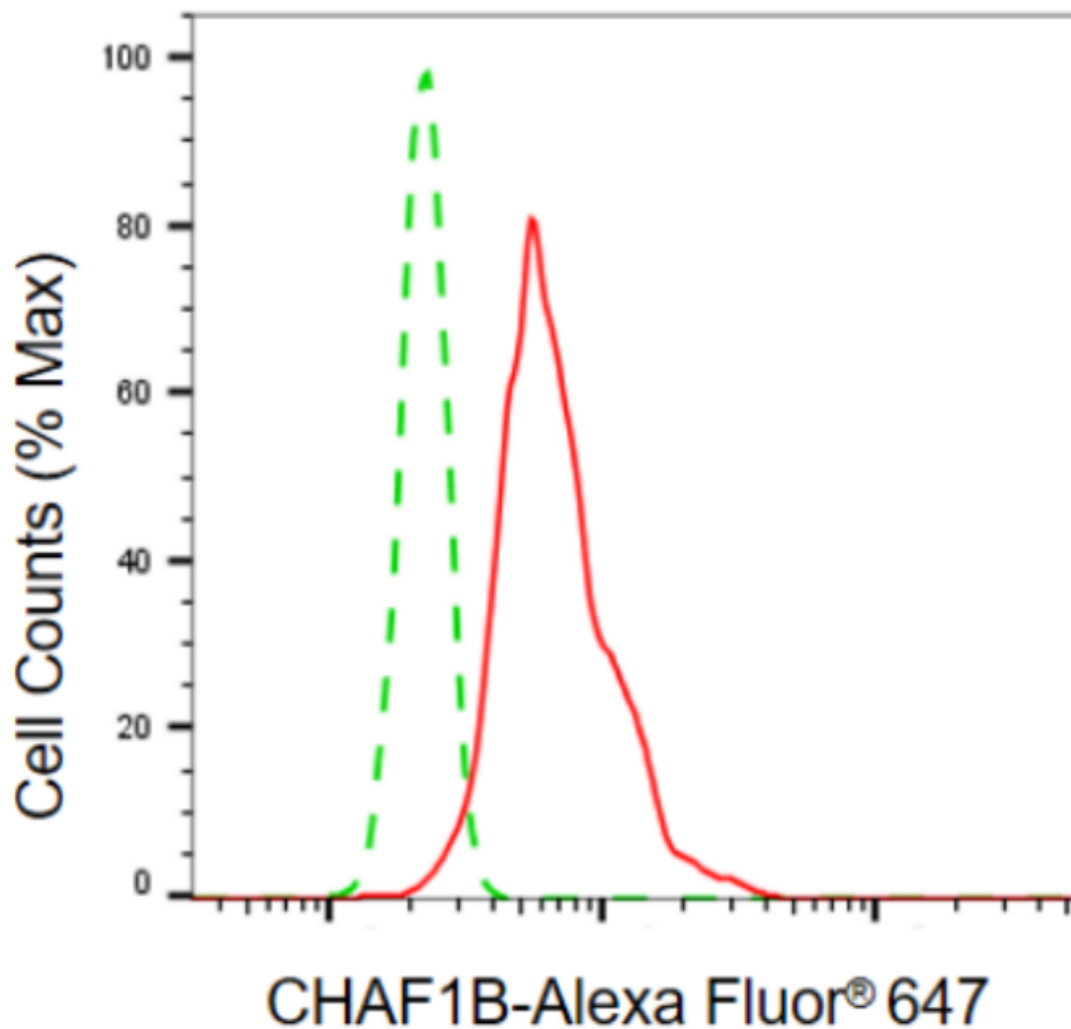
[WWW.GENUINBIOTECH.COM](http://WWW.GENUINBIOTECH.COM)

# Anti-CHAF1B Recombinant Rabbit Monoclonal Antibody

PAGE 2

**Note:** This product is for research use only.

## Validation Data



Copyright ©2024 Genuin Biotechnologies LLC

Flow cytometric analysis of CHAF1B expression in HT-1080 cells using anti-CHAF1B antibody (Cat#4568, 1:2,000). Green, isotype control; red, CHAF1B.

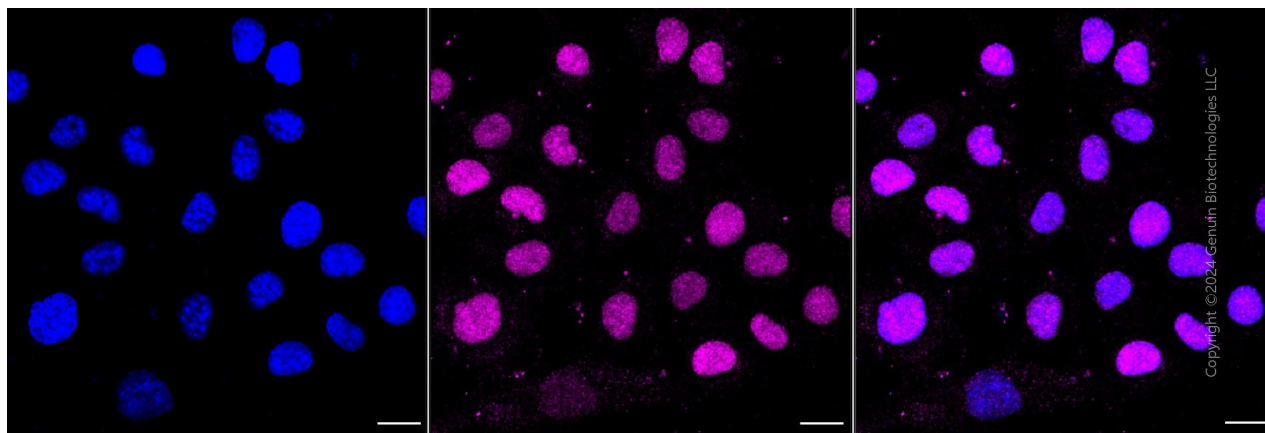
### SUPPORT

SUPPORT@GENUINBIOTECH.COM  
TEL: +1-540-855-7041

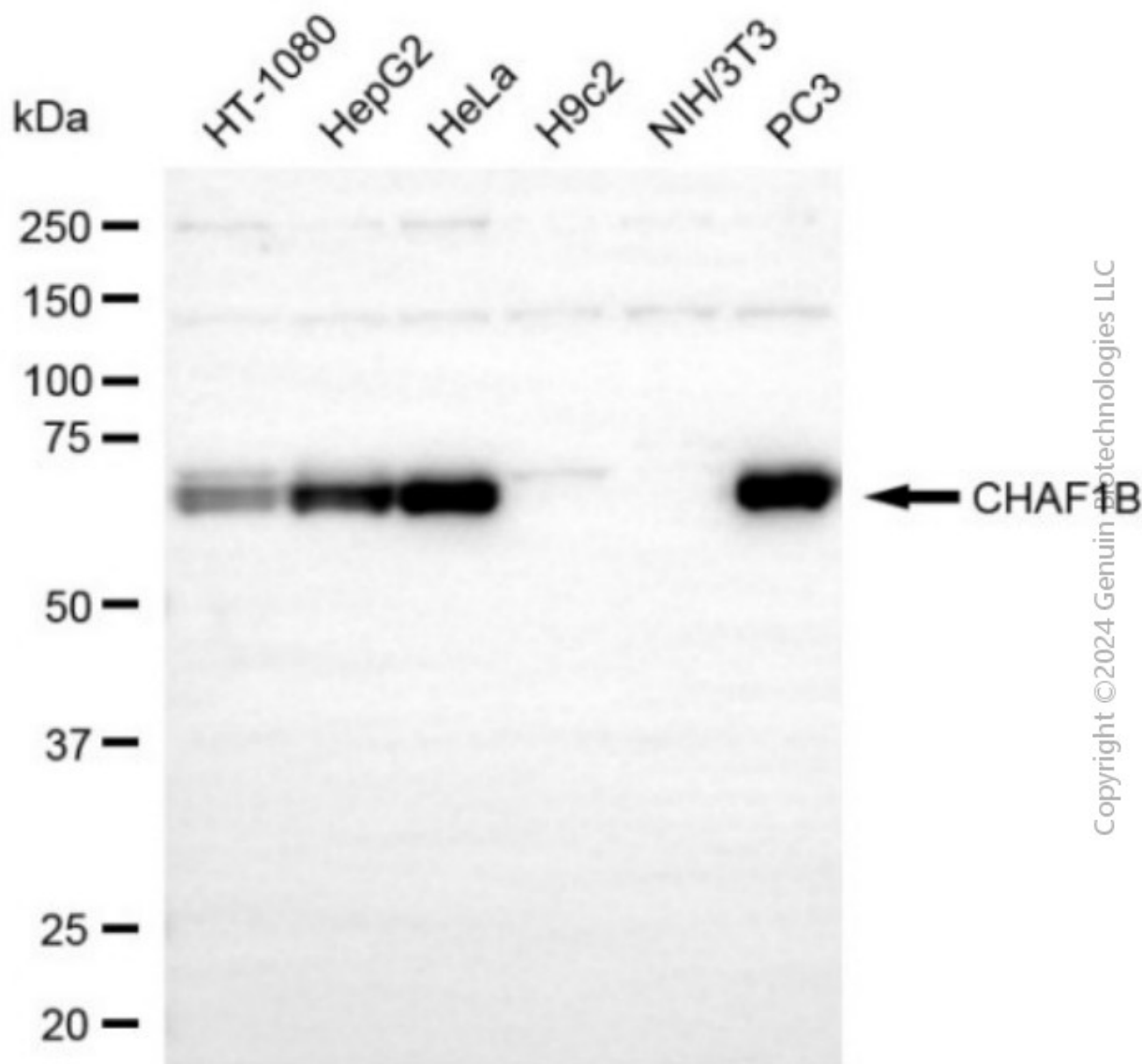
### ORDERS

SALES@GENUINBIOTECH.COM  
FAX: +1-540-855-7041

[WWW.GENUINBIOTECH.COM](http://WWW.GENUINBIOTECH.COM)



Immunocytochemical staining of HT-1080 cells with anti-CHAF1B antibody (Cat#4568, 1:1,000) . Nuclei were stained blue with DAPI;CHAF1B was stained magenta with Alexa Fluor® 647. Images were taken using Leica stellaris 5. Protein abundance based on laser Intensity and smart gain: Medium. Scale bar, 20  $\mu$ m.



Western blotting analysis using anti-CHAF1B antibody (Cat#4568). Total cell lysates (30  $\mu$ g) from various cell lines were loaded and separated by SDS-PAGE. The blot was incubated with anti-CHAF1B antibody (Cat#4568, 1:5,000) and HRP-conjugated goat anti-rabbit secondary antibody (Cat#201, 1:20,000) respectively. Image was developed using NaQ™ ECL Substrate Kit (Cat#716).