

# Anti-Catechol-O-methyltransferase Recombinant Rabbit Monoclonal Antibody



**Catalog #: 4573**

## Aliases

COMT; Catechol-O-Methyltransferase; Catechol O-Methyltransferase; EC 2.1.1.6; Epididymis Secretory Sperm Binding Protein Li 98n; Testicular Tissue Protein Li 42; HEL-S-98n

## Background

Gene Name: COMT

NCBI Gene Entry: [1312](#)

UniProt Entry: [P21964](#)

## Application Information

Molecular Weight: Predicted, 30 kDa; observed, 24,28 kDa

Clonality: Rabbit monoclonal antibody

Clone ID: 24GB11885

Species Reactivity: Human, rat

Applications Tested: Western blotting (WB), immunocytochemistry (IC), flow cytometry (FCM)

## Immunogen

A synthesized peptide derived from human COMT

## Isotype

Rabbit IgG

## Storage Buffer

Supplied in PBS (pH 7.4) containing 50% glycerol, and 0.02% sodium azide.

## Storage

Store at -20 °C for one year.

## Recommended Dilutions

Western Blotting (WB): 1:1,000-1:5,000

Immunocytochemistry (IC): 1:100-1:1,000

Flow Cytometry (FCM): 1:2,000

**Note:** This product is for research use only.

## Validation Data

---

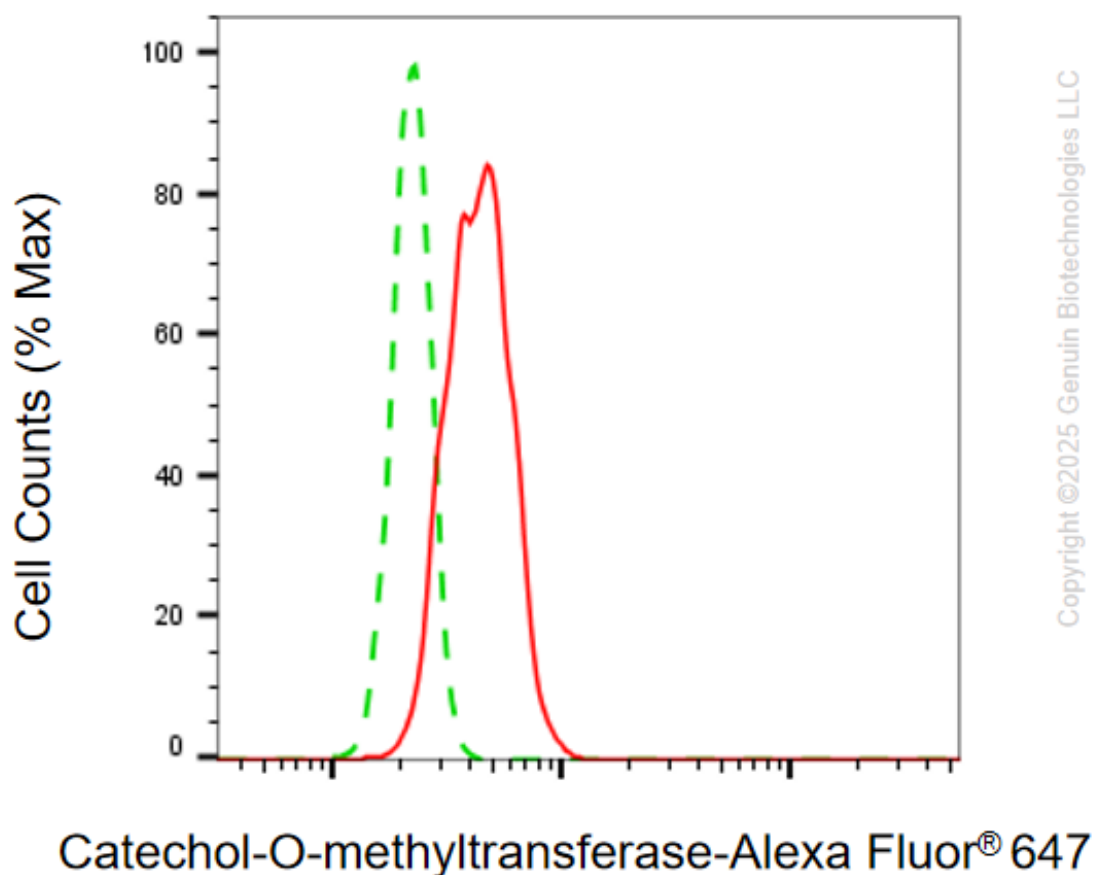
### SUPPORT

SUPPORT@GENUINBIOTECH.COM  
TEL: +1-540-855-7041

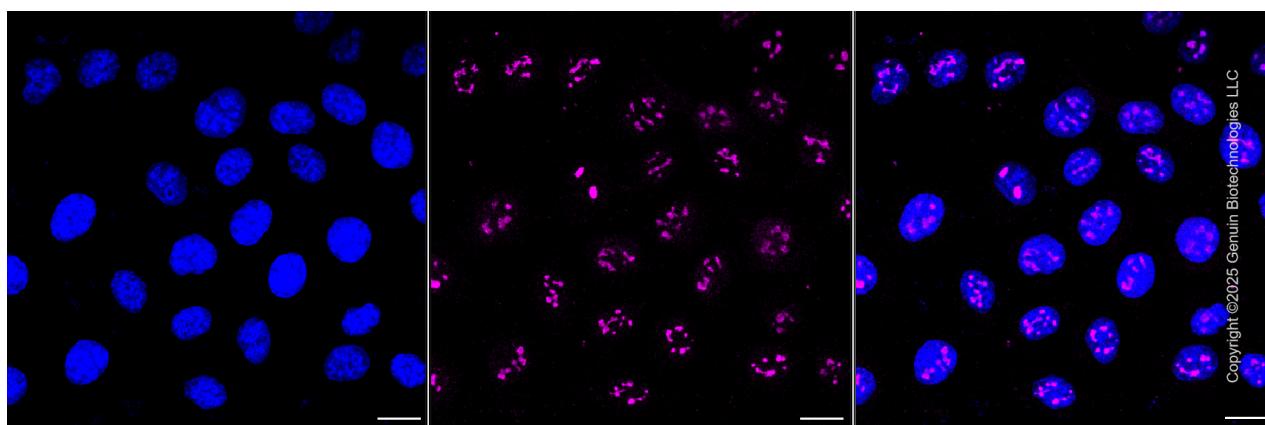
### ORDERS

SALES@GENUINBIOTECH.COM  
FAX: +1-540-855-7041

[WWW.GENUINBIOTECH.COM](http://WWW.GENUINBIOTECH.COM)



Flow cytometric analysis of Catechol-O-methyltransferase expression in HT-1080 cells using anti-Catechol-O-methyltransferase antibody (Cat#4573, 1:2,000). Green, isotype control; red, Catechol-O-methyltransferase.



Immunocytochemical staining of HT-1080 cells with anti-Catechol-O-methyltransferase antibody (Cat#4573, 1:1,000). Nuclei were stained blue with DAPI; Catechol-O-methyltransferase was stained magenta with Alexa Fluor® 647. Images were taken using Leica stellaris 5. Protein abundance based on laser Intensity and smart gain: Medium. Scale bar, 20  $\mu$ m.

**SUPPORT**

SUPPORT@GENUINBIOTECH.COM  
TEL: +1-540-855-7041

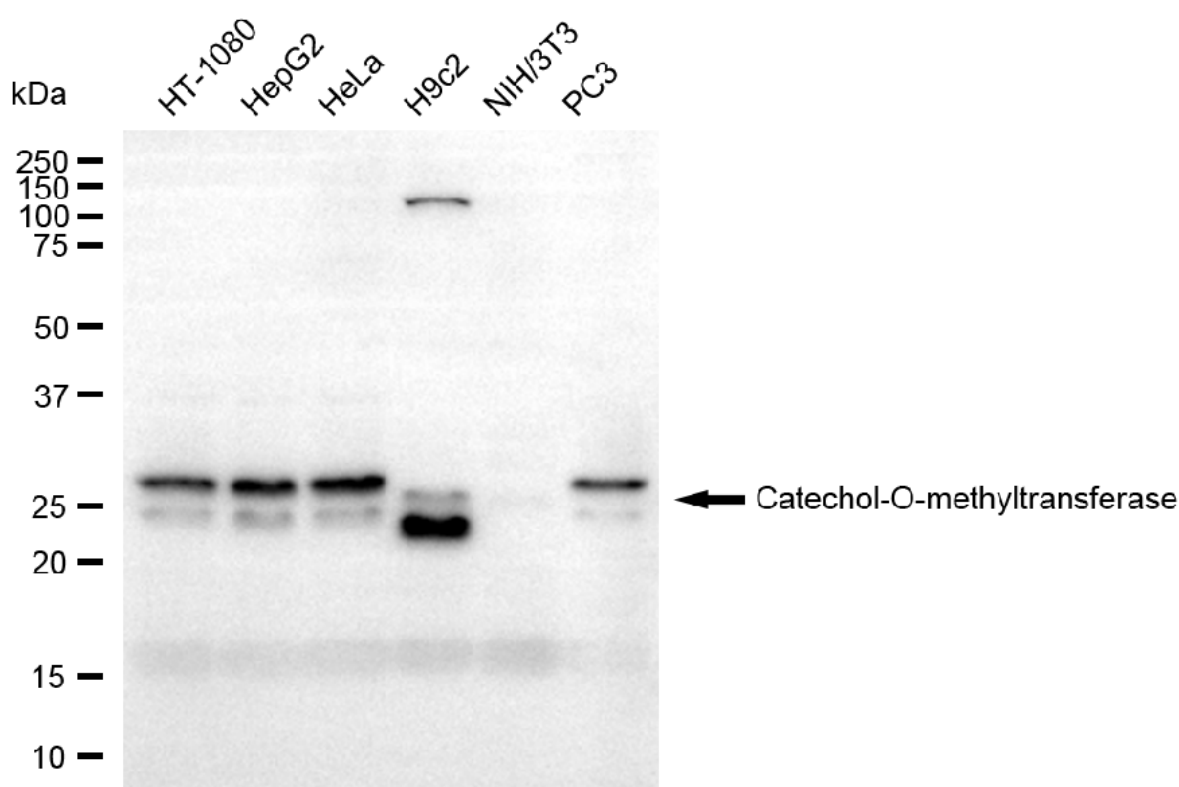
**ORDERS**

SALES@GENUINBIOTECH.COM  
FAX: +1-540-855-7041

**WWW.GENUINBIOTECH.COM**

## Anti-Catechol-O-methyltransferase Recombinant Rabbit Monoclonal Antibody

PAGE 3



Copyright ©2025 Genuin Biotechnologies LLC

Western blotting analysis using anti-catechol-O-methyltransferase antibody (Cat#4573). Total cell lysates (30  $\mu$ g) from various cell lines were loaded and separated by SDS-PAGE. The blot was incubated with anti-catechol-O-methyltransferase antibody (Cat#4573, 1:5,000) and HRP-conjugated goat anti-rabbit secondary antibody (Cat#201, 1:20,000) respectively. Image was developed using FeQ™ ECL Substrate Kit (Cat#226).

### SUPPORT

SUPPORT@GENUINBIOTECH.COM  
TEL: +1-540-855-7041

### ORDERS

SALES@GENUINBIOTECH.COM  
FAX: +1-540-855-7041

WWW.GENUINBIOTECH.COM