

Anti-PICALM Recombinant Rabbit Monoclonal Antibody



Catalog #: 4582

Aliases

PICALM; Phosphatidylinositol Binding Clathrin Assembly Protein; CALM; CLTH; Phosphatidylinositol-Binding Clathrin Assembly Protein; Clathrin Assembly Lymphoid Myeloid Leukemia Protein; LAP

Background

Gene Name: PICALM
NCBI Gene Entry: [8301](#)
UniProt Entry: [Q13492](#)

Application Information

Molecular Weight: Predicted, 71 kDa; observed, 71,69,66 kDa
Clonality: Rabbit monoclonal antibody
Clone ID: 24GB11925
Species Reactivity: Human
Applications Tested: Western blotting (WB), flow cytometry (FCM), immunocytochemistry (IC)

Immunogen

A synthesized peptide derived from human PICALM

Isotype

Rabbit IgG

Storage Buffer

Supplied in PBS (pH 7.4) containing 50% glycerol, and 0.02% sodium azide.

Storage

Store at -20 °C for one year.

Recommended Dilutions

Western Blotting (WB): 1:1,000-1:5,000
Immunocytochemistry (IC): 1:100-1:1,000
Flow Cytometry (FCM): 1:2,00

Note: This product is for research use only.

SUPPORT

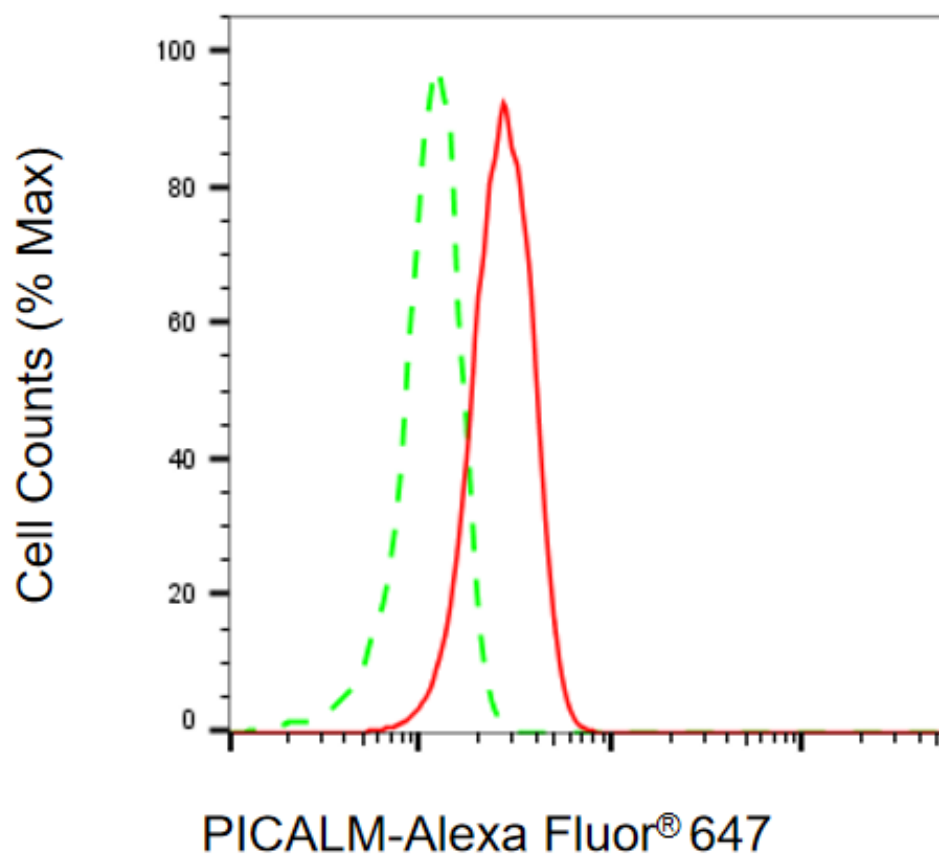
SUPPORT@GENUINBIOTECH.COM
TEL: +1-540-855-7041

ORDERS

SALES@GENUINBIOTECH.COM
FAX: +1-540-855-7041

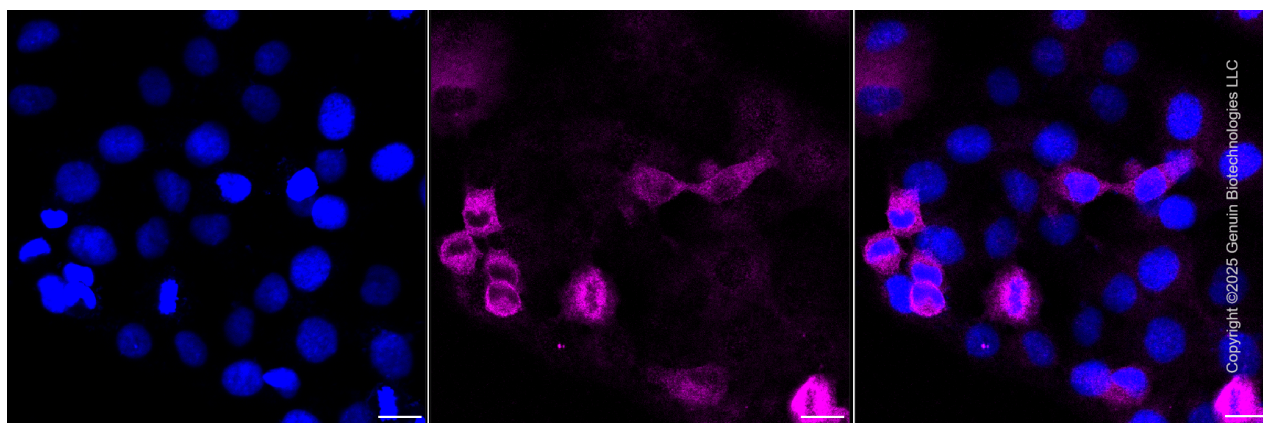
WWW.GENUINBIOTECH.COM

Validation Data



Copyright ©2025 Genuin Biotechnologies LLC

Flow cytometric analysis of PICALM expression in HT-1080 cells using anti-PICALM antibody (Cat#4582, 1:2,000). Green, isotype control; red, PICALM.



Immunocytochemical staining of HT-1080 cells with anti-PICALM antibody (Cat#4582, 1:1,000). Nuclei were stained blue with DAPI; PICALM was stained magenta with Alexa Fluor® 647. Images were taken using Leica stellaris 5. Protein abundance based on laser Intensity and smart

SUPPORT

SUPPORT@GENUINBIOTECH.COM
TEL: +1-540-855-7041

ORDERS

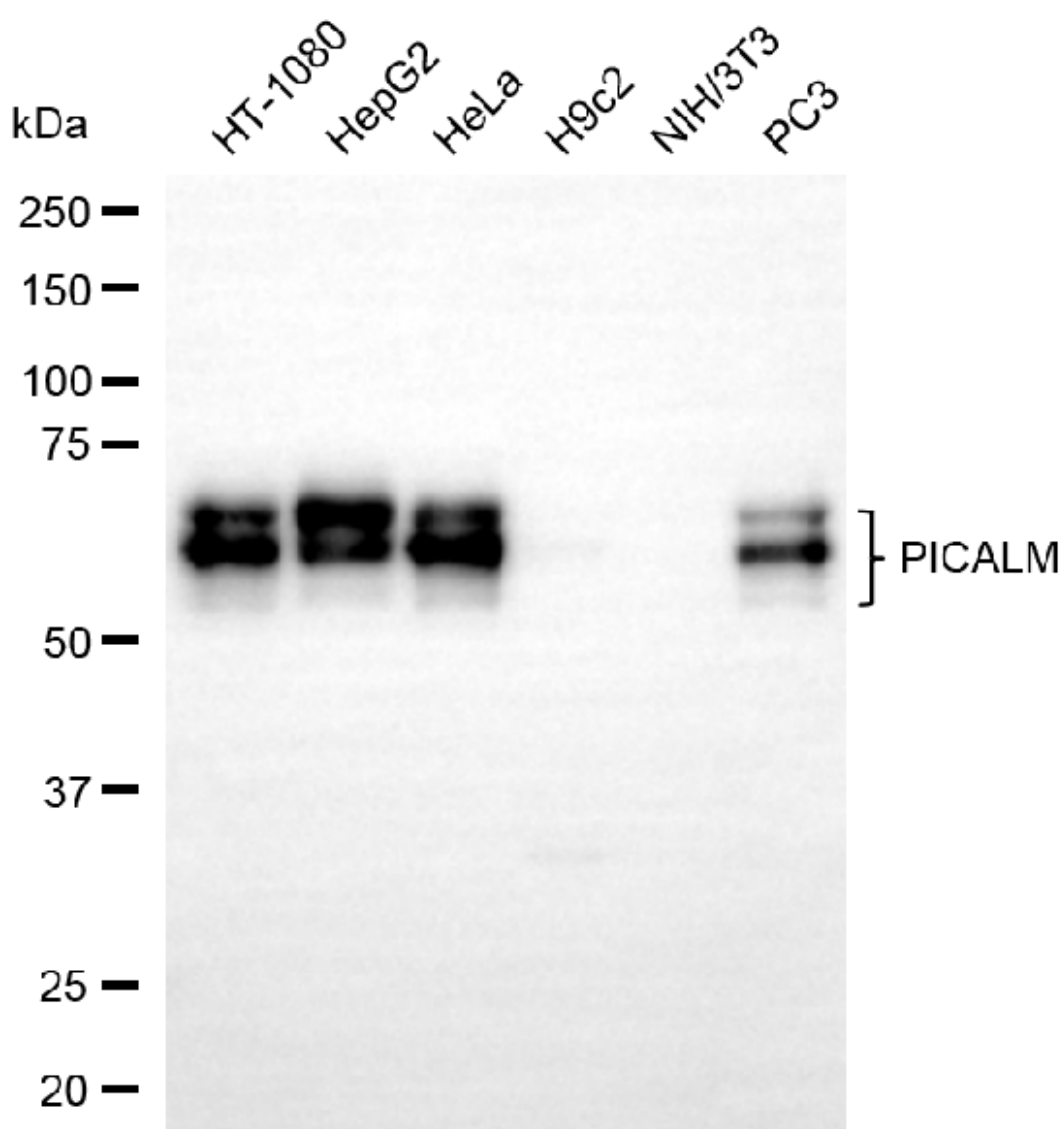
SALES@GENUINBIOTECH.COM
FAX: +1-540-855-7041

WWW.GENUINBIOTECH.COM

Anti-PICALM Recombinant Rabbit Monoclonal Antibody

PAGE 3

gain: Medium. Scale bar, 20 μ m.



Copyright ©2025 Genuin Biotechnologies LLC

Western blotting analysis using anti-PICALM antibody (Cat#4582). Total cell lysates (30 μ g) from various cell lines were loaded and separated by SDS-PAGE. The blot was incubated with anti-PICALM antibody (Cat#4582, 1:5,000) and HRP-conjugated goat anti-rabbit secondary antibody (Cat#201, 1:20,000) respectively. Image was developed using NaQ™ ECL Substrate Kit (Cat#716).

SUPPORT

SUPPORT@GENUINBIOTECH.COM
TEL: +1-540-855-7041

ORDERS

SALES@GENUINBIOTECH.COM
FAX: +1-540-855-7041

WWW.GENUINBIOTECH.COM