

Anti-MCM3 Recombinant Rabbit Monoclonal Antibody



Catalog #: 4583

Aliases

MCM3; Minichromosome Maintenance Complex Component 3; DNA Polymerase Alpha Holoenzyme-Associated Protein P1; DNA Replication Licensing Factor MCM3; RLF Subunit Beta; P1-MCM3; P102; MCM3 Minichromosome Maintenance Deficient 3 (S. Cerevisiae); Minichromosome Maintenance Deficient (S. Cerevisiae) 3; MCM3 Minichromosome Maintenance Deficient 3; Replication Licensing Factor, Beta Subunit; Minichromosome Maintenance Deficient 3; Cervical Cancer Proto-Oncogene 5; DNA Replication Factor MCM3; HRlf Beta Subunit; EC 3.6.4.12; HCC5; P1.H; RLFB

Background

Gene Name: MCM3

NCBI Gene Entry: [4172](#)

UniProt Entry: [P25205](#)

Application Information

Molecular Weight: Predicted, 91 kDa; observed, 100 kDa

Clonality: Rabbit monoclonal antibody

Clone ID: 24GB11930

Species Reactivity: Human, mouse, rat

Applications Tested: Western blotting (WB), flow cytometry (FCM), immunocytochemistry (IC)

Immunogen

A synthesized peptide derived from human MCM3

Isotype

Rabbit IgG

Storage Buffer

Supplied in PBS (pH 7.4) containing 50% glycerol, and 0.02% sodium azide.

Storage

Store at -20 °C for one year.

Recommended Dilutions

Western Blotting (WB): 1:1,000-1:5,000

Flow Cytometry (FCM): 1:2,000

SUPPORT

SUPPORT@GENUINBIOTECH.COM
TEL: +1-540-855-7041

ORDERS

SALES@GENUINBIOTECH.COM
FAX: +1-540-855-7041

WWW.GENUINBIOTECH.COM

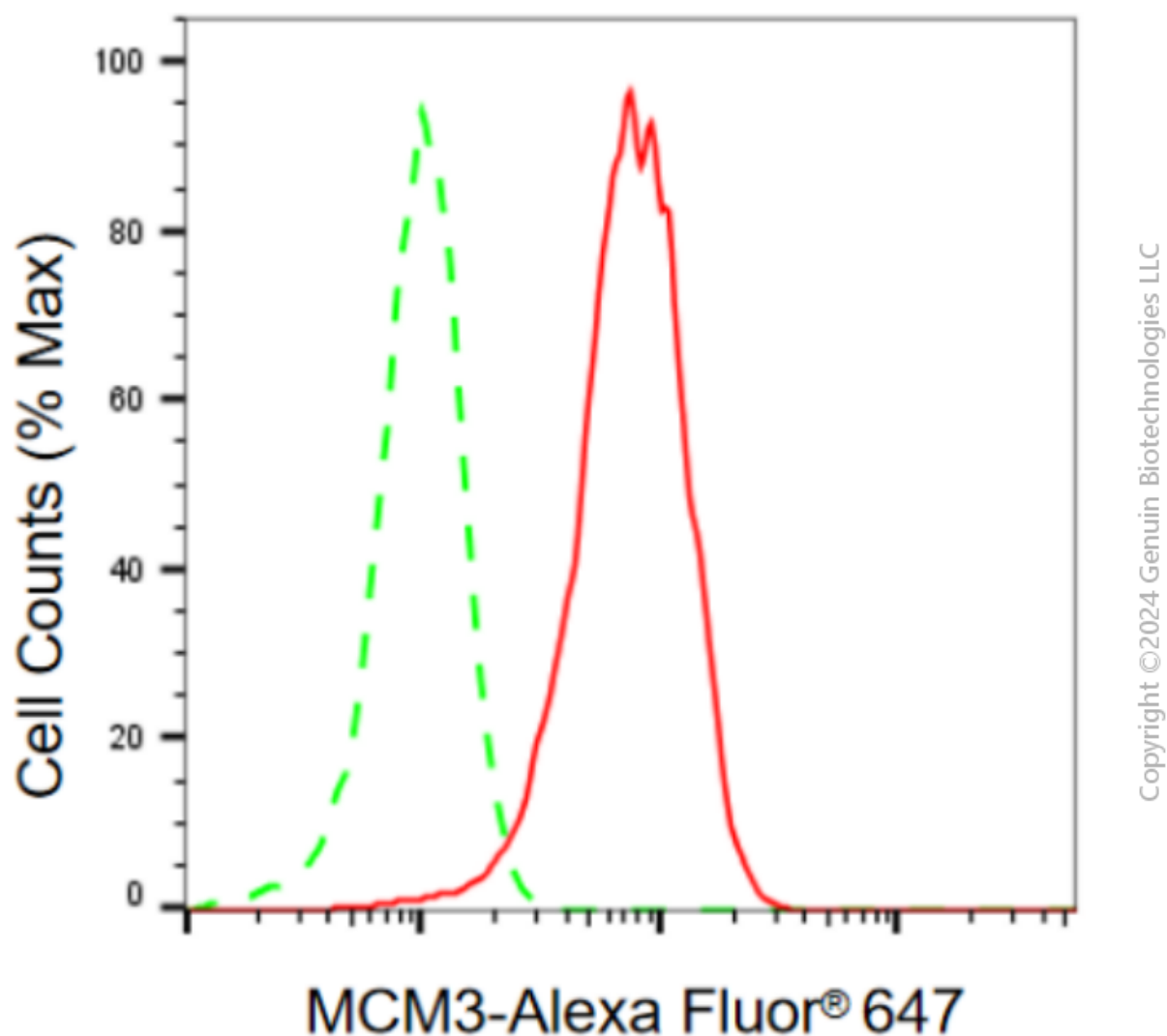
Anti-MCM3 Recombinant Rabbit Monoclonal Antibody

PAGE 2

Immunocytochemistry (IC): 1:100-1:1,000

Note: This product is for research use only.

Validation Data



Flow cytometric analysis of MCM3 expression in HepG2 cells using anti-MCM3 antibody (Cat#4583, 1:2,000). Green, isotype control; red, MCM3.

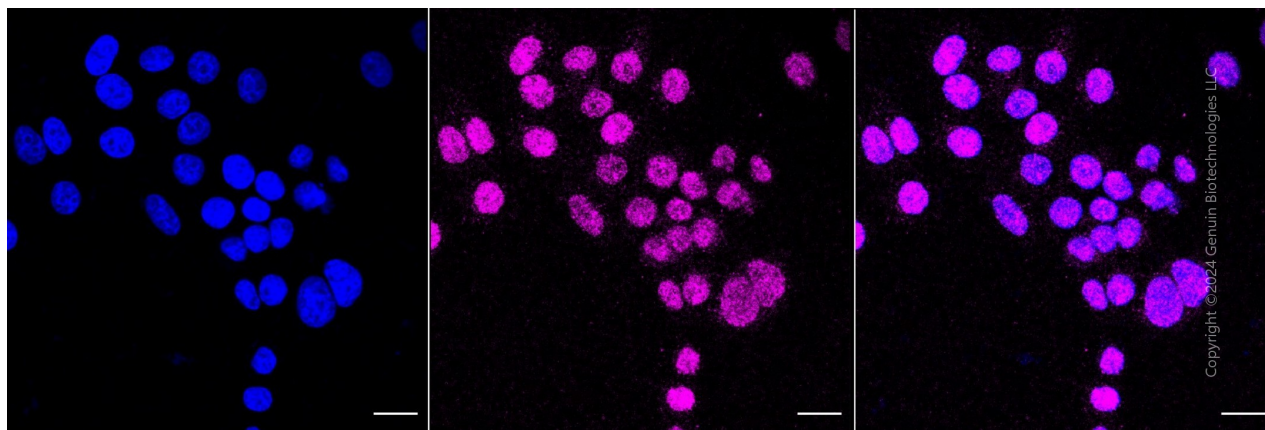
SUPPORT

SUPPORT@GENUINBIOTECH.COM
TEL: +1-540-855-7041

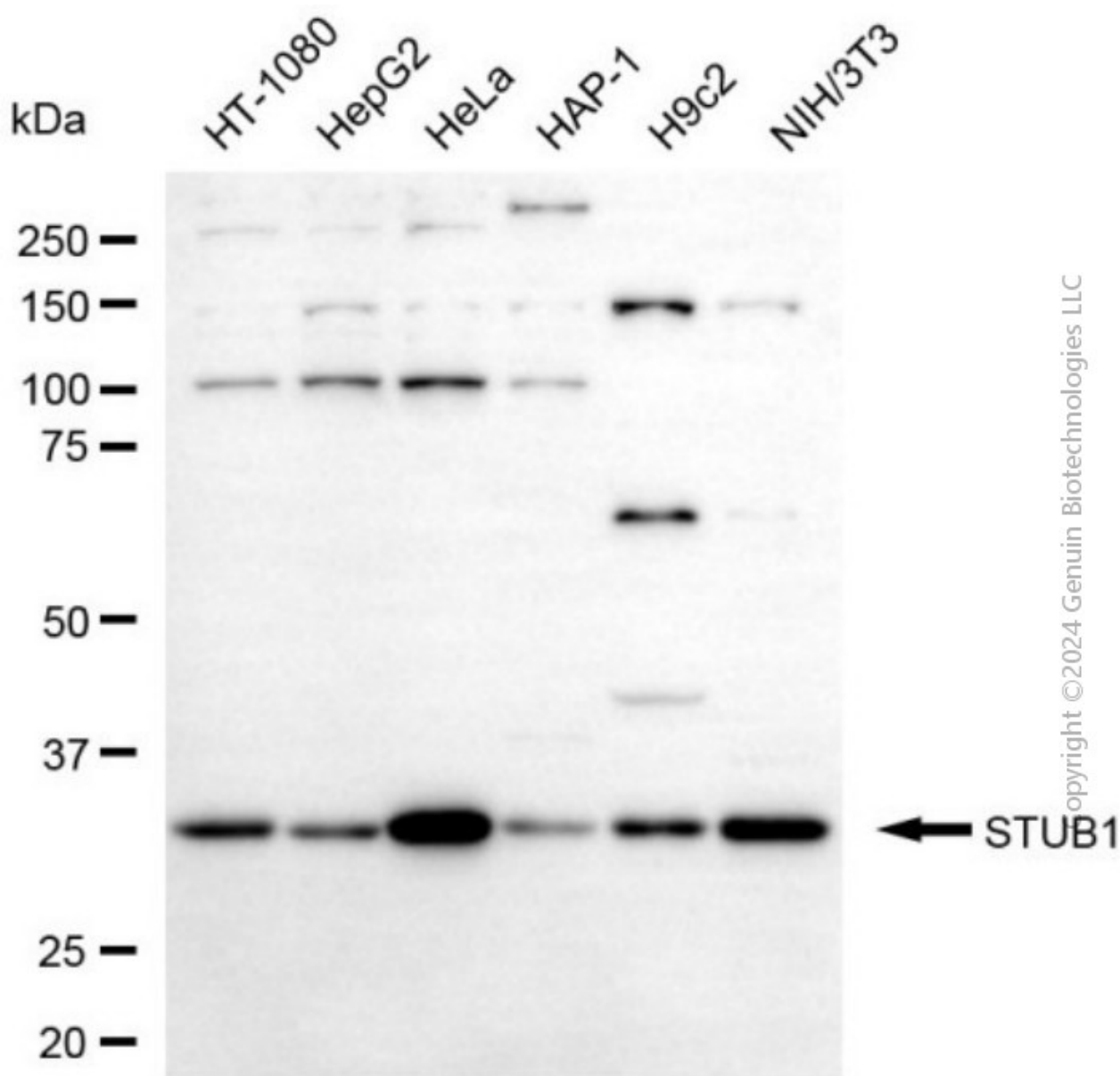
ORDERS

SALES@GENUINBIOTECH.COM
FAX: +1-540-855-7041

WWW.GENUINBIOTECH.COM



Immunocytochemical staining of HepG2 cells with anti-MCM3 antibody (Cat#4583, 1:1,000). Nuclei were stained blue with DAPI; MCM3 was stained magenta with Alexa Fluor® 647. Images were taken using Leica stellaris 5. Protein abundance based on laser Intensity and smart gain: Medium. Scale bar, 20 μ m.



Western blotting analysis using anti-MCM3 antibody (Cat#4583). Total cell lysates (30 μ g) from various cell lines were loaded and separated by SDS-PAGE. The blot was incubated with anti-MCM3 antibody (Cat#4583, 1:5,000) and HRP-conjugated goat anti-rabbit secondary antibody (Cat#201, 1:20,000) respectively. Image was developed using NaQ™ ECL Substrate Kit (Cat#716).