

Catalog #: 4585

Aliases

CLPP; Caseinolytic Mitochondrial Matrix Peptidase Proteolytic Subunit; ATP-Dependent Clp Protease Proteolytic Subunit, Mitochondrial; Endopeptidase Clp; EC 3.4.21.92; ClpP (Caseinolytic Protease, ATP-Dependent, Proteolytic Subunit, E. Coli) Homolog; ClpP Caseinolytic Peptidase, ATP-Dependent, Proteolytic Subunit Homolog (E. Coli); ClpP Caseinolytic Protease, ATP-Dependent, Proteolytic Subunit Homolog (E. Coli); ClpP Caseinolytic Peptidase, ATP-Dependent, Proteolytic Subunit Homolog; ClpP Caseinolytic Protease, ATP-Dependent, Proteolytic Subunit Homolog; Putative ATP-Dependent Clp Protease Proteolytic Subunit, Mitochondrial; ATP-Dependent Protease ClpAP (E. Coli), Proteolytic Subunit, Human; ClpP Caseinolytic Peptidase ATP-Dependent, Proteolytic Subunit; ATP-Dependent; Protease ClpAP, Proteolytic Subunit, Human; DFN81; PRLTS3

Background

Gene Name: CLPP

NCBI Gene Entry: [8192](#)

UniProt Entry: [Q16740](#)

Application Information

Molecular Weight: Predicted, 30 kDa; observed, 26 kDa

Clonality: Rabbit monoclonal antibody

Clone ID: 24GB11940

Species Reactivity: Human, mouse, rat

Applications Tested: Western blotting (WB), flow cytometry (FCM), immunocytochemistry (IC)

Immunogen

A synthesized peptide derived from human CLPP

Isotype

Rabbit IgG

Storage Buffer

Supplied in PBS (pH 7.4) containing 50% glycerol, and 0.02% sodium azide.

Storage

Store at -20 °C for one year.

Recommended Dilutions

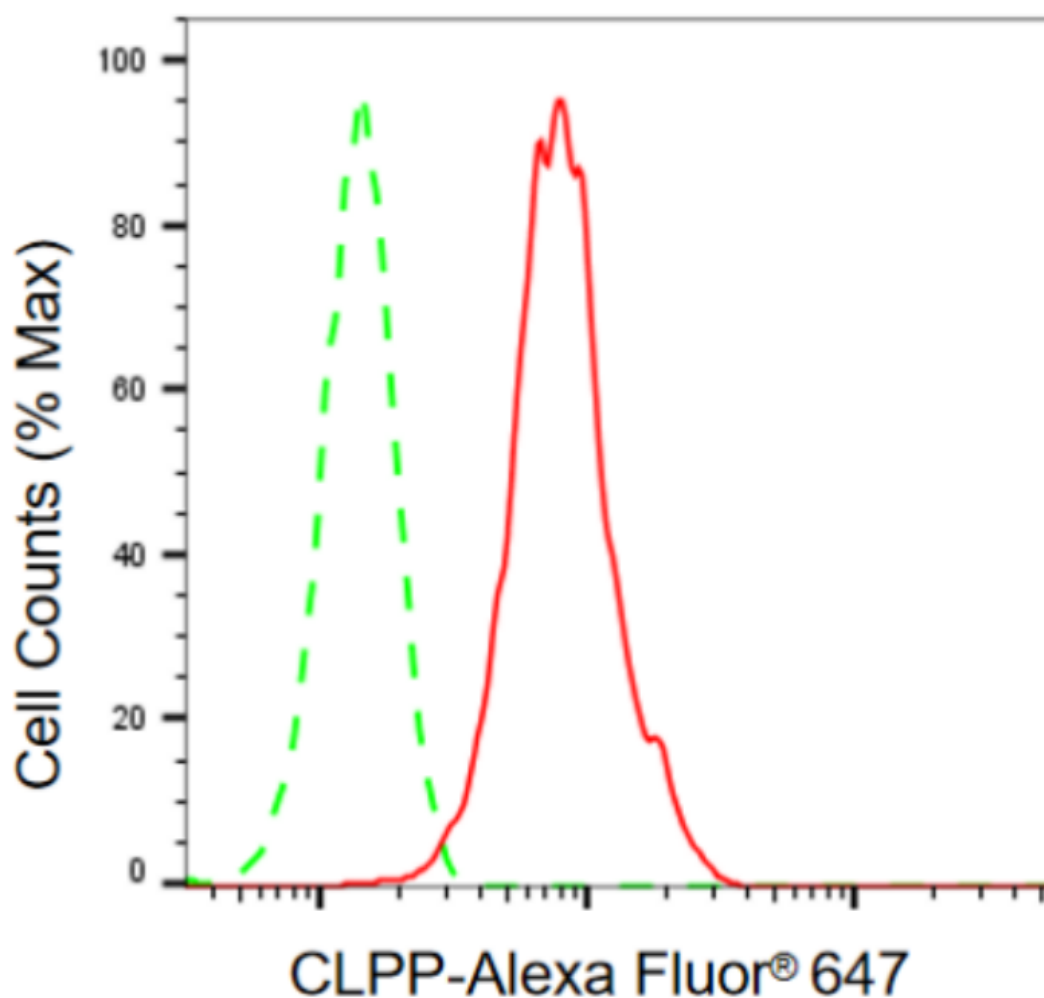
Western Blotting (WB): 1:1,000-1:5,000

Flow Cytometry (FCM): 1:2,000

Immunocytochemistry (IC): 1:100-1:1,000

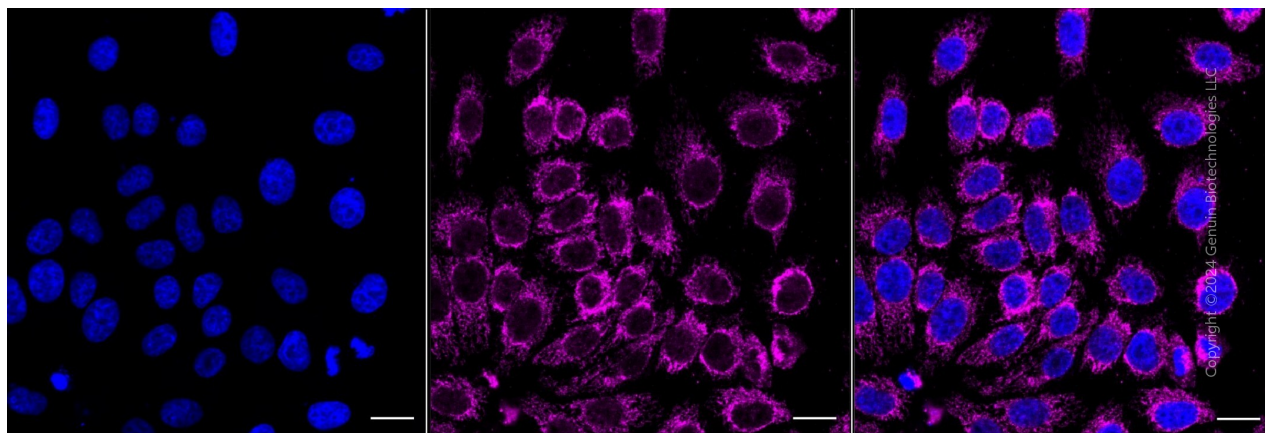
Note: This product is for research use only.

Validation Data

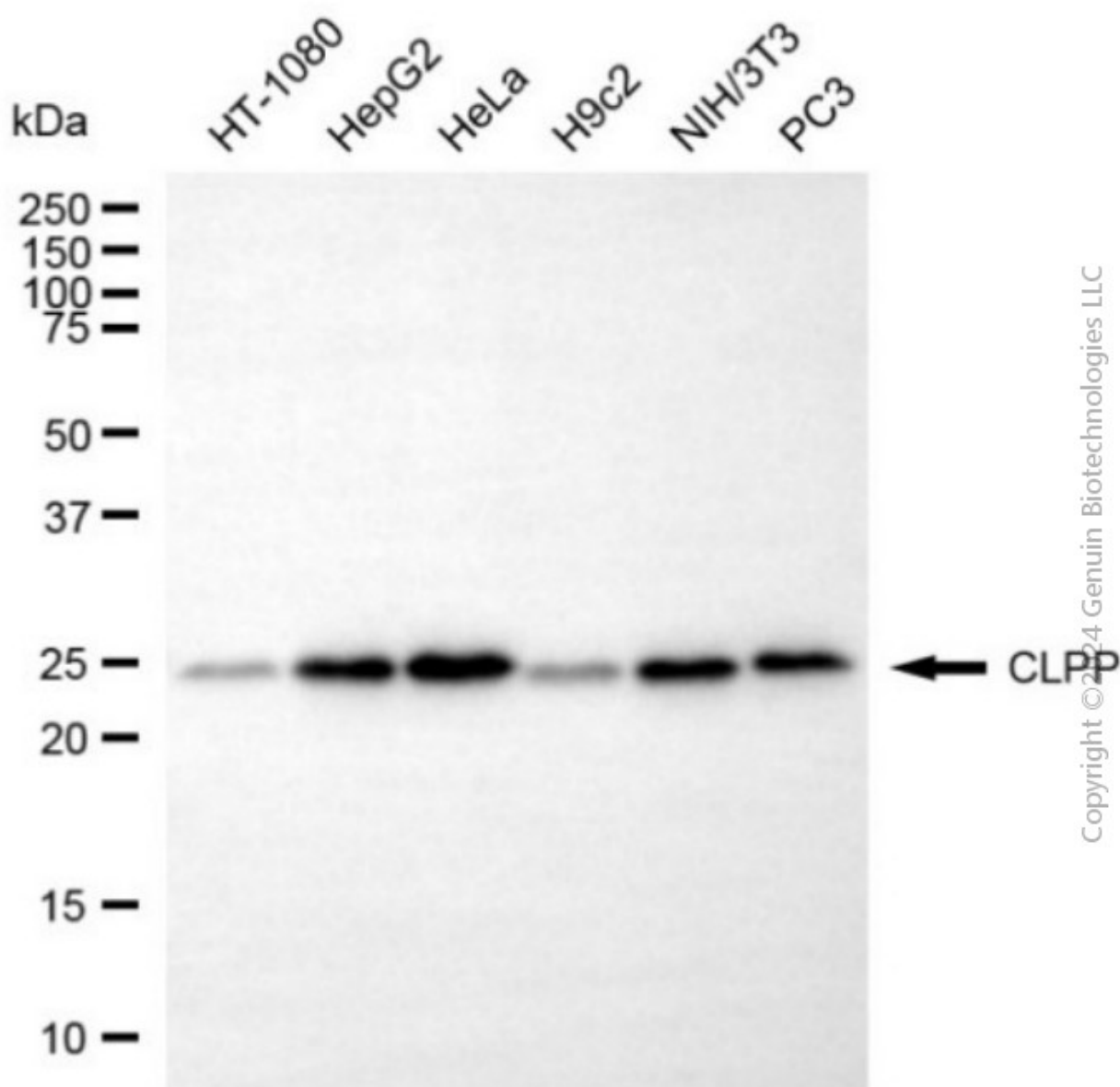


Copyright ©2024 Genuin Biotechnologies LLC

Flow cytometric analysis of CLPP expression in HepG2 cells using anti-CLPP antibody (Cat#4585, 1:2,000). Green, isotype control; red, CLPP.



Immunocytochemical staining of HepG2 cells with anti-CLPP antibody (Cat#4585, 1:1,000). Nuclei were stained blue with DAPI; CLPP was stained magenta with Alexa Fluor® 647. Images were taken using Leica stellaris 5. Protein abundance based on laser Intensity and smart gain: High. Scale bar, 20 μ m.



Western blotting analysis using anti-CLPP antibody (Cat#4585). Total cell lysates (30 µg) from various cell lines were loaded and separated by SDS-PAGE. The blot was incubated with anti-CLPP antibody (Cat#4585, 1:5,000) and HRP-conjugated goat anti-rabbit secondary antibody (Cat#201, 1:20,000) respectively. Image was developed using NaQ™ ECL Substrate Kit (Cat#716).