

Anti-ACADVL Recombinant Rabbit Monoclonal Antibody



Catalog #: 4587

Aliases

ACADVL; Acyl-CoA Dehydrogenase Very Long Chain; VLCAD; LCACD; ACAD6; Very Long-Chain Specific Acyl-CoA Dehydrogenase, Mitochondrial; Acyl-Coenzyme A Dehydrogenase, Very Long Chain; EC 1.3.8.9; EC 1.3.99

Background

Gene Name: ACADVL

NCBI Gene Entry: [37](#)

UniProt Entry: [P49748](#)

Application Information

Molecular Weight: Predicted, 70 kDa; observed, 65 kDa

Clonality: Rabbit monoclonal antibody

Clone ID: 24GB11950

Species Reactivity: Human

Applications Tested: Western blotting (WB), flow cytometry (FCM), immunocytochemistry (IC)

Immunogen

A synthesized peptide derived from human ACADVL/VLCAD

Isotype

Rabbit IgG

Storage Buffer

Supplied in PBS (pH 7.4) containing 50% glycerol, and 0.02% sodium azide.

Storage

Store at -20 °C for one year.

Recommended Dilutions

Western Blotting (WB): 1:1,000-1:5,000

Flow Cytometry (FCM): 1:2,000

Immunocytochemistry (IC): 1:100-1:1,000

Note: This product is for research use only.

SUPPORT

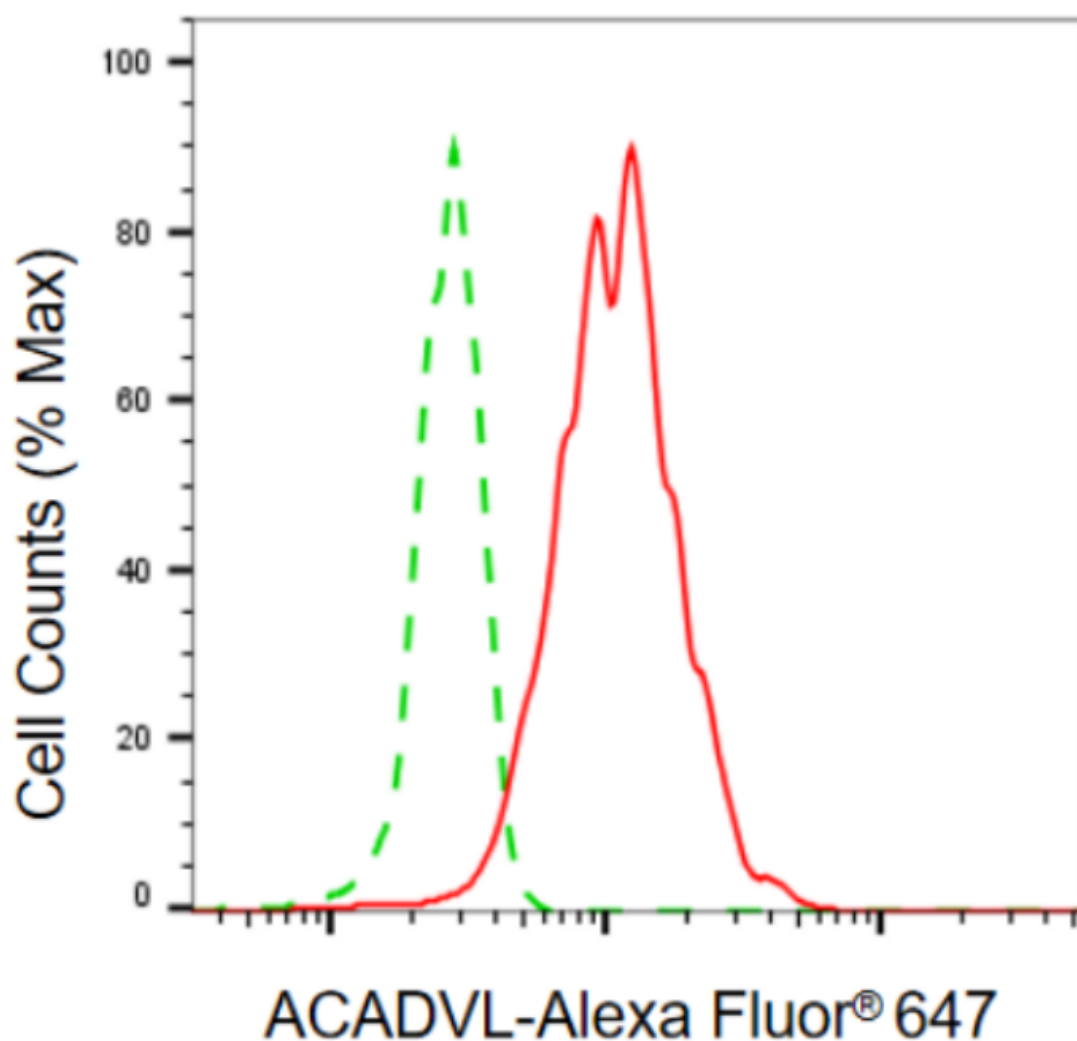
SUPPORT@GENUINBIOTECH.COM
TEL: +1-540-855-7041

ORDERS

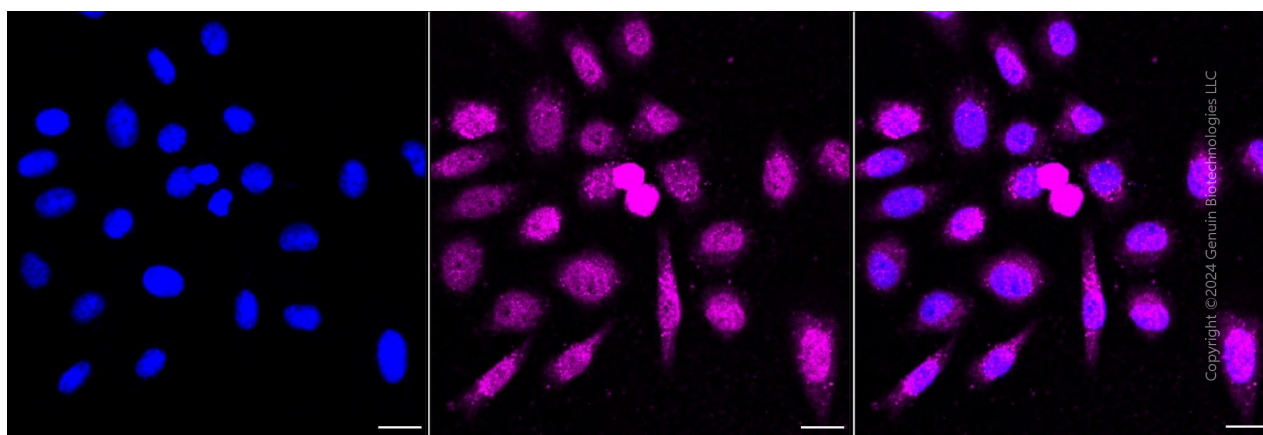
SALES@GENUINBIOTECH.COM
FAX: +1-540-855-7041

WWW.GENUINBIOTECH.COM

Validation Data



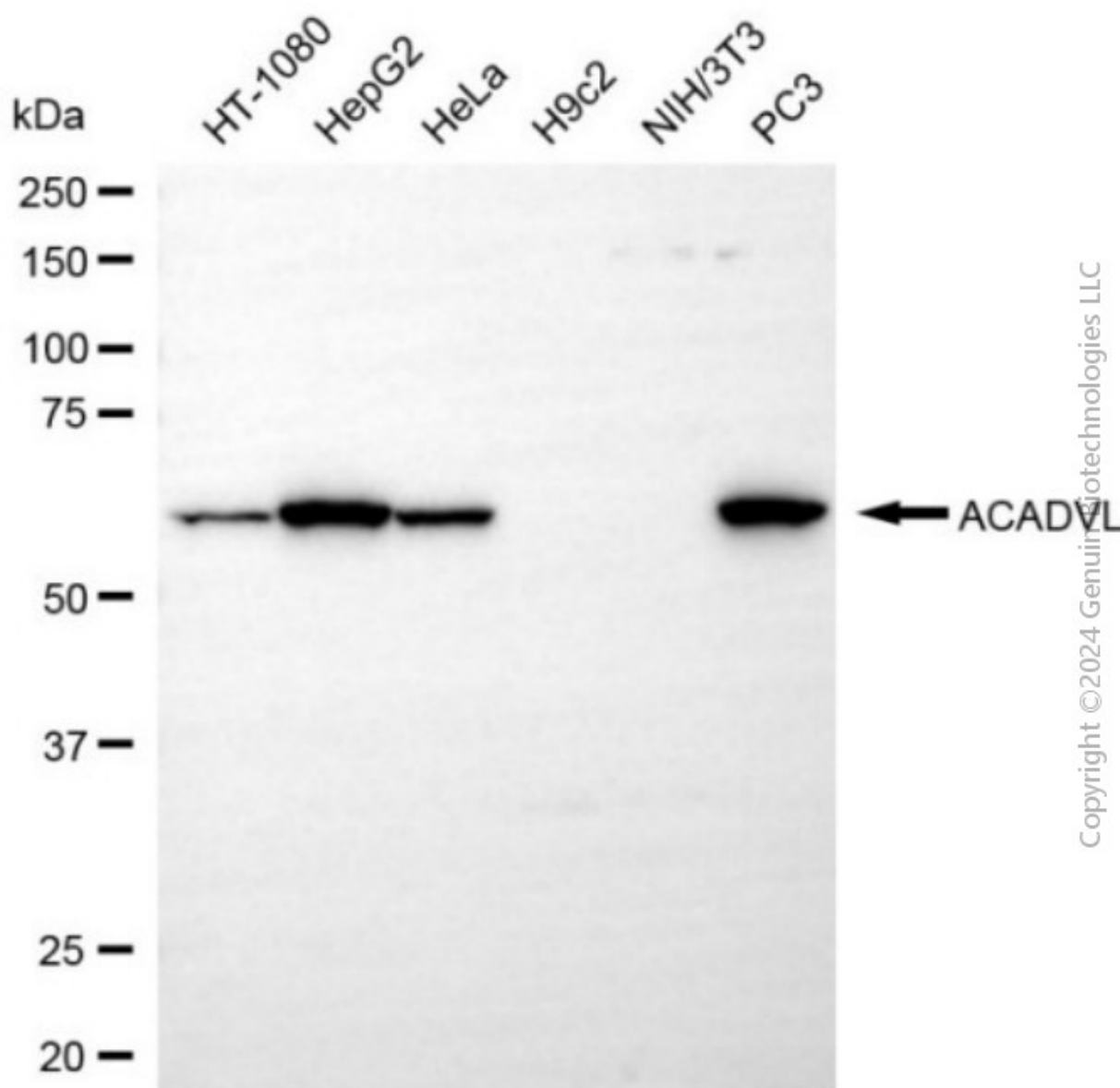
Flow cytometric analysis of ACADVL expression in HepG2 cells using anti-ACADVL antibody (Cat#4587, 1:2,000). Green, isotype control; red, ACADVL.



Anti-ACADVL Recombinant Rabbit Monoclonal Antibody

PAGE 3

Immunocytochemical staining of HepG2 cells with anti-ACADVL antibody (Cat#4587, 1:1,000). Nuclei were stained blue with DAPI; ACADVL was stained magenta with Alexa Fluor® 647. Images were taken using Leica stellaris 5. Protein abundance based on laser Intensity and smart gain: Medium. Scale bar, 20 µm.



Western blotting analysis using anti-ACADVL antibody (Cat#4587). Total cell lysates (30 µg) from various cell lines were loaded and separated by SDS-PAGE. The blot was incubated with anti-ACADVL antibody (Cat#4587, 1:5,000) and HRP-conjugated goat anti-rabbit secondary antibody (Cat#201, 1:20,000) respectively. Image was developed using FeQ™ ECL Substrate Kit (Cat#226).

SUPPORT

SUPPORT@GENUINBIOTECH.COM
TEL: +1-540-855-7041

ORDERS

SALES@GENUINBIOTECH.COM
FAX: +1-540-855-7041

WWW.GENUINBIOTECH.COM