

Anti-RACK1 Recombinant Rabbit Monoclonal Antibody



Catalog #: 4592

Aliases

RACK1; Receptor For Activated C Kinase 1; GNB2L1; H12.3; Guanine Nucleotide Binding Protein (G Protein), Beta Polypeptide 2-Like 1; Guanine Nucleotide-Binding Protein Subunit Beta-Like Protein 12.3; Guanine Nucleotide-Binding Protein Subunit Beta-2-Like 1; Cell Proliferation-Inducing Gene 21 Protein ; Receptor Of Activated Protein C Kinase 1; Small Ribosomal Subunit Protein RACK1; Human Lung Cancer Oncogene 7 Protein ; Gnb2-Rs1; HLC-7; Protein Homologous To Chicken B Complex Protein, Guanine Nucleotide Binding; Guanine Nucleotide Binding Protein Beta Polypeptide 2-Like 1; Receptor Of Activated Protein Kinase C 1; Receptor For Activated C Kinase; Proliferation-Inducing Gene 21; Lung Cancer Oncogene 7; GNB2-RS1; PIG21

Background

Gene Name: RACK1

NCBI Gene Entry: [10399](#)

UniProt Entry: [P63244](#)

Application Information

Molecular Weight: Predicted, 35 kDa; observed, 35 kDa

Clonality: Rabbit monoclonal antibody

Clone ID: 24GB11975

Species Reactivity: Human, mouse, rat

Applications Tested: Western blotting (WB), flow cytometry (FCM), immunocytochemistry (IC)

Immunogen

A synthesized peptide derived from human RACK1

Isotype

Rabbit IgG

Storage Buffer

Supplied in PBS (pH 7.4) containing 50% glycerol, and 0.02% sodium azide.

Storage

Store at -20 °C for one year.

Recommended Dilutions

SUPPORT

SUPPORT@GENUINBIOTECH.COM
TEL: +1-540-855-7041

ORDERS

SALES@GENUINBIOTECH.COM
FAX: +1-540-855-7041

WWW.GENUINBIOTECH.COM

Anti-RACK1 Recombinant Rabbit Monoclonal Antibody

PAGE 2

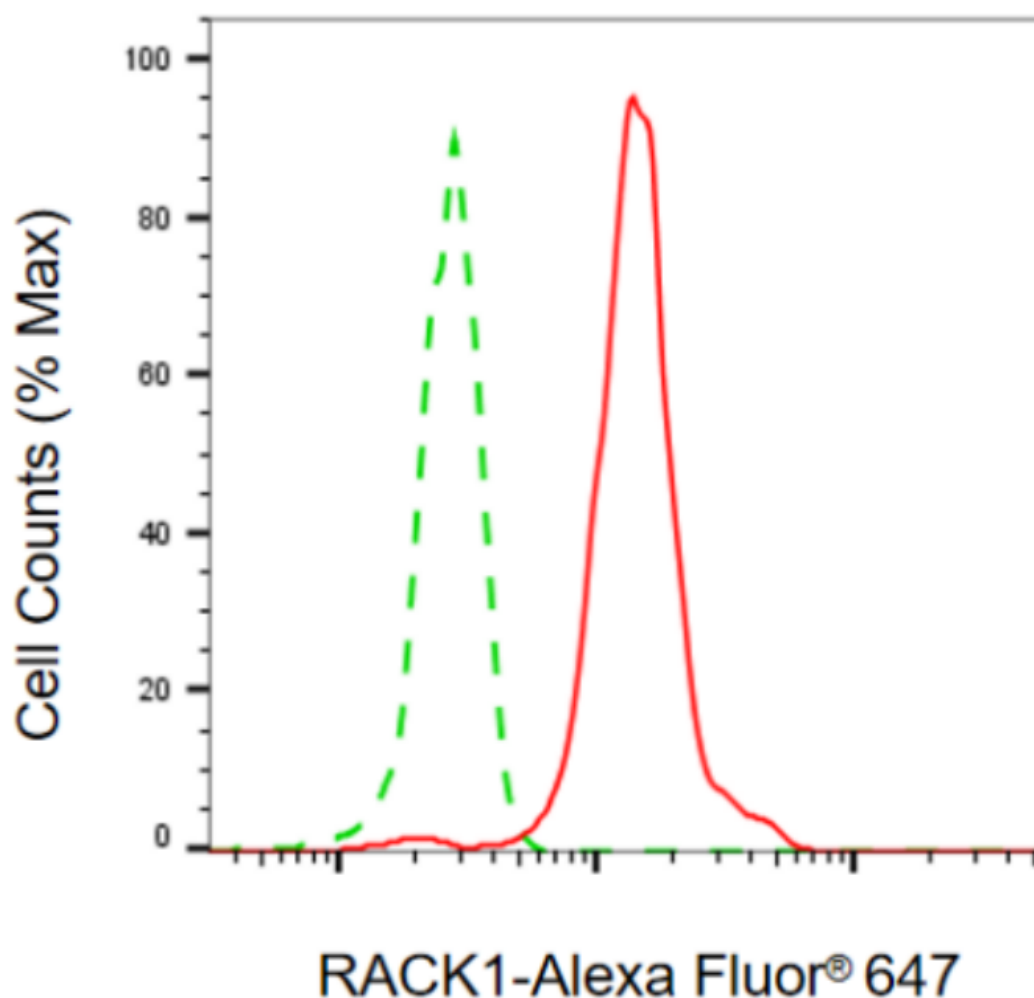
Western Blotting (WB): 1:1,000-1:5,000

Flow Cytometry (FCM): 1:2,000

Immunocytochemistry (IC): 1:100-1:1,000

Note: This product is for research use only.

Validation Data



Copyright ©2024 Genuin Biotechnologies LLC

Flow cytometric analysis of RACK1 expression in HepG2 cells using anti-RACK1 antibody (Cat#4592, 1:2,000). Green, isotype control; red, RACK1.

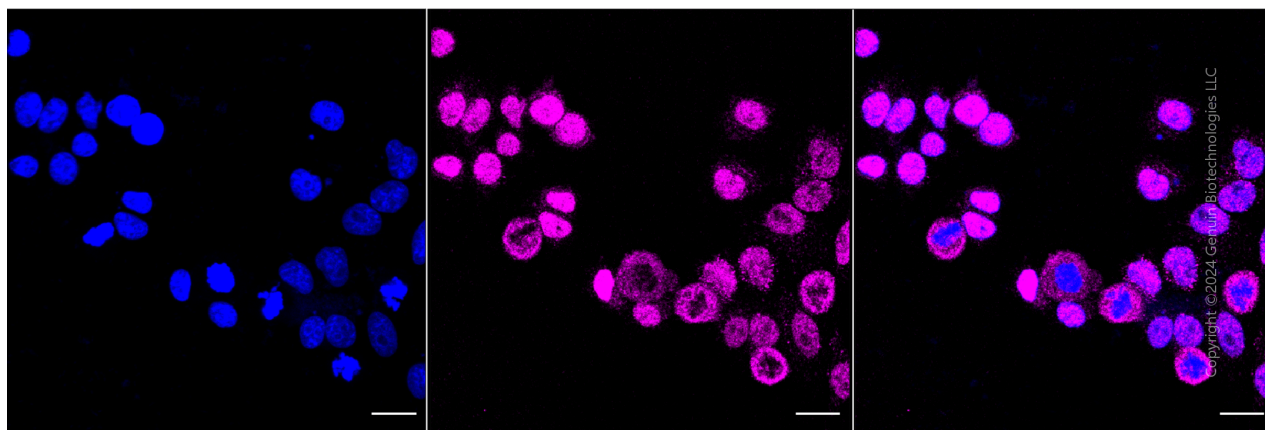
SUPPORT

SUPPORT@GENUINBIOTECH.COM
TEL: +1-540-855-7041

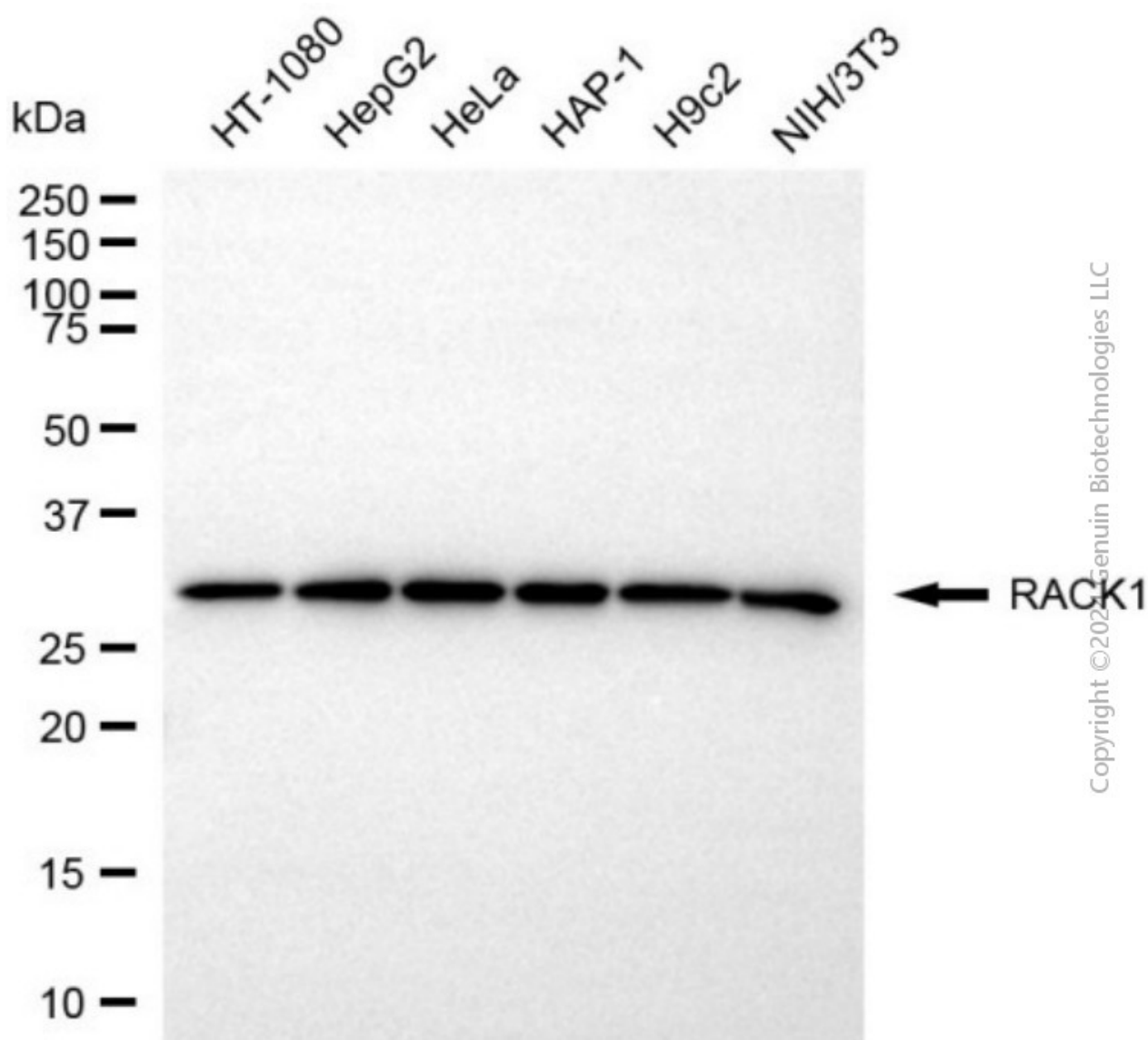
ORDERS

SALES@GENUINBIOTECH.COM
FAX: +1-540-855-7041

WWW.GENUINBIOTECH.COM



Immunocytochemical staining of HepG2 cells with anti-RACK1 antibody (Cat#4592, 1:1,000). Nuclei were stained blue with DAPI; RACK1 was stained magenta with Alexa Fluor® 647. Images were taken using Leica stellaris 5. Protein abundance based on laser Intensity and smart gain: Medium. Scale bar, 20 μ m.



Western blotting analysis using anti-RACK1 antibody (Cat#4592). Total cell lysates (30 μ g) from various cell lines were loaded and separated by SDS-PAGE. The blot was incubated with anti-RACK1 antibody (Cat#4592, 1:5,000) and HRP-conjugated goat anti-rabbit secondary antibody (Cat#201, 1:20,000) respectively. Image was developed using NaQ™ ECL Substrate Kit (Cat#716).