

Anti-Carbamoyl-phosphate synthase 1 Recombinant Rabbit Monoclonal Antibody



Catalog #: 4594

Aliases

CPS1; Carbamoyl-Phosphate Synthase 1; GATD6; Carbamoyl-Phosphate Synthase [Ammonia], Mitochondrial; Carbamoyl-Phosphate Synthase 1, Mitochondrial; Carbamoyl-Phosphate Synthase (Ammonia); EC 6.3.4.16; Carbamoyl-Phosphate Synthetase 1, Mitochondrial; Carbamoyl-Phosphate Synthetase I; Carbamoylphosphate Synthetase I; CPSase I; CPSASE1; PHN

Background

Gene Name: CPS1

NCBI Gene Entry: [1373](#)

UniProt Entry: [P31327](#)

Application Information

Molecular Weight: Predicted, 165 kDa; observed, 150 kDa

Clonality: Rabbit monoclonal antibody

Clone ID: 24GB11985

Species Reactivity: Human

Applications Tested: Western blotting (WB), immunocytochemistry (IC), flow cytometry (FCM)

Immunogen

A synthesized peptide derived from human CPS1

Isotype

Rabbit IgG

Storage Buffer

Supplied in PBS (pH 7.4) containing 50% glycerol, and 0.02% sodium azide.

Storage

Store at -20 °C for one year.

Recommended Dilutions

Western Blotting (WB): 1:1,000-1:5,000

Flow Cytometry (FCM): 1:2,000

Immunocytochemistry (IC): 1:200 - 1:1,000

SUPPORT

SUPPORT@GENUINBIOTECH.COM
TEL: +1-540-855-7041

ORDERS

SALES@GENUINBIOTECH.COM
FAX: +1-540-855-7041

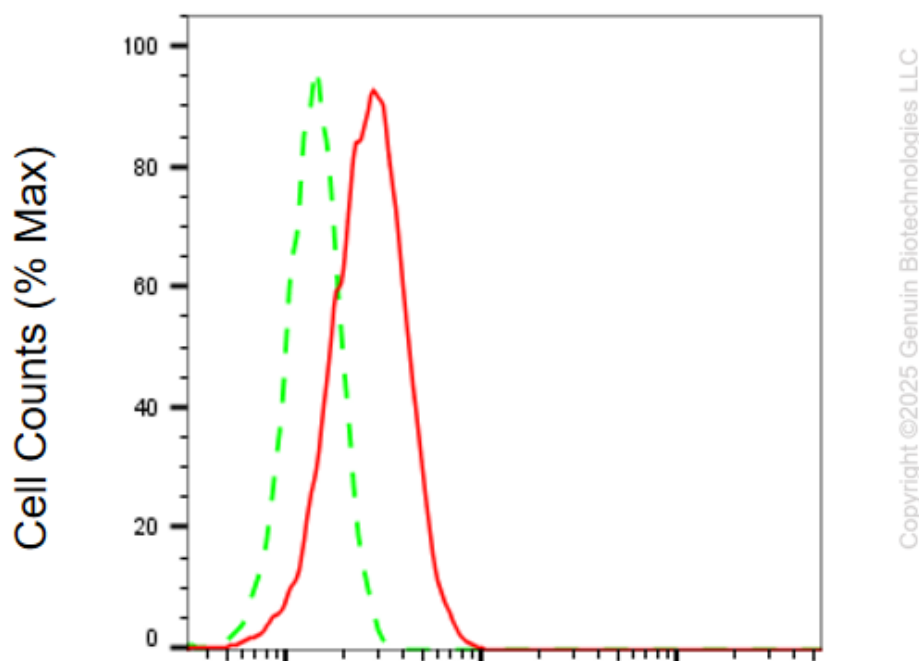
WWW.GENUINBIOTECH.COM

Anti-Carbamoyl-phosphate synthase 1 Recombinant Rabbit Monoclonal Antibody

PAGE 2

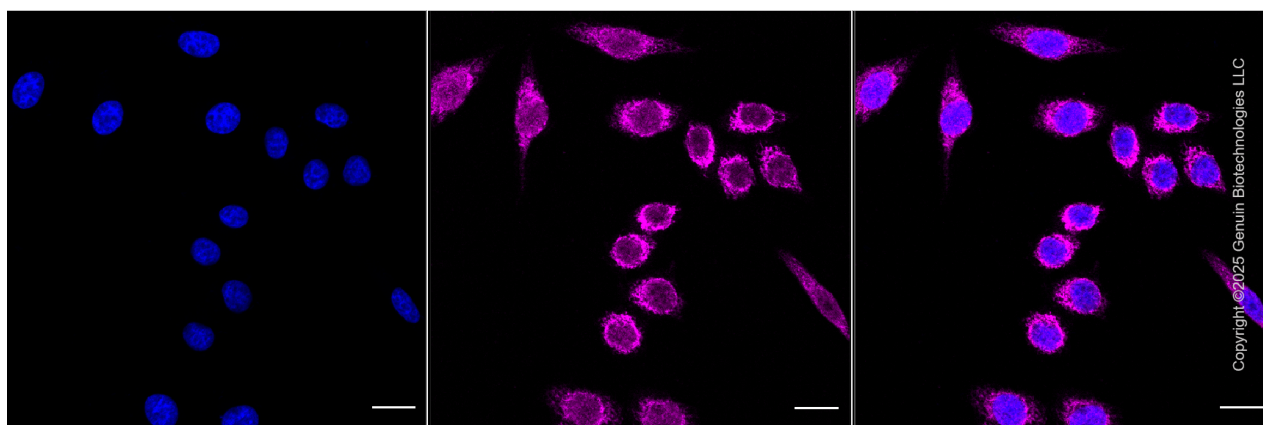
Note: This product is for research use only.

Validation Data



Carbamoyl-phosphate synthase 1-Alexa Fluor® 647

Flow cytometric analysis of Carbamoyl-phosphate synthase 1 expression in HepG2 cells using anti-Carbamoyl-phosphate synthase 1 antibody (Cat#4594, 1:2,000). Green, isotype control; red, Carbamoyl-phosphate synthase 1.



Immunocytochemical staining of HepG2 cells with anti-Carbamoyl-phosphate synthase 1 antibody (Cat#4594, 1:1,000). Nuclei were stained blue with DAPI; Carbamoyl-phosphate synthase 1 was stained magenta with Alexa Fluor® 647. Images were taken using Leica stellaris 5. Protein

SUPPORT

SUPPORT@GENUINBIOTECH.COM
TEL: +1-540-855-7041

ORDERS

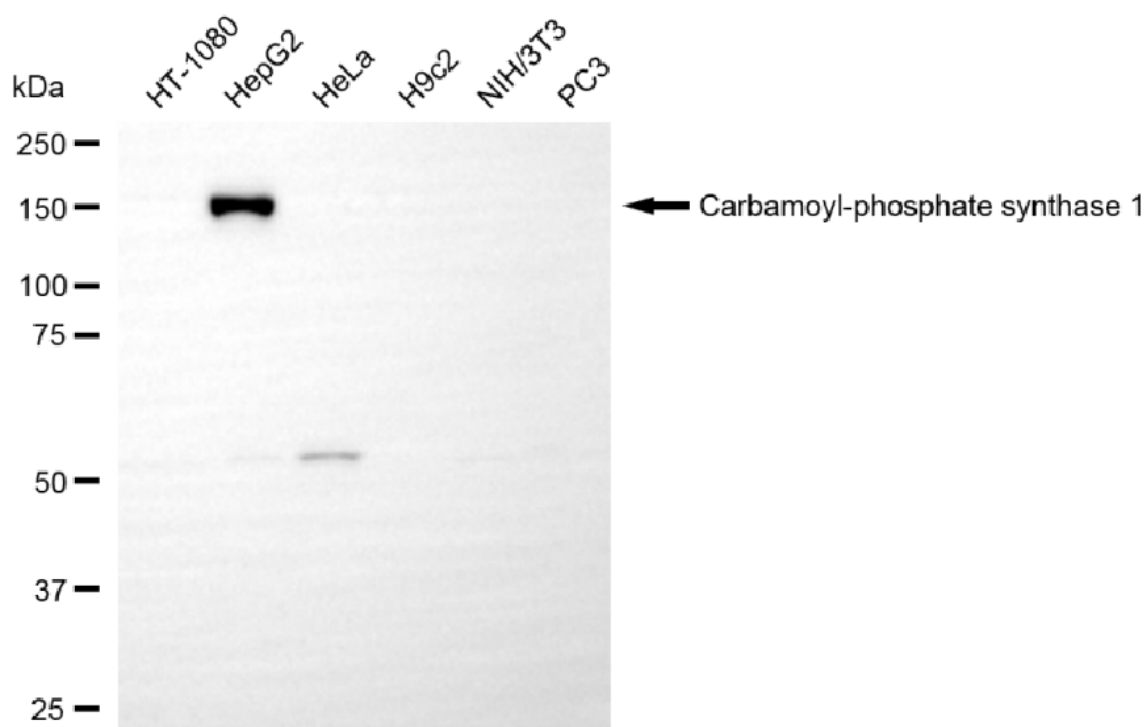
SALES@GENUINBIOTECH.COM
FAX: +1-540-855-7041

WWW.GENUINBIOTECH.COM

Anti-Carbamoyl-phosphate synthase 1 Recombinant Rabbit Monoclonal Antibody

PAGE 3

abundance based on laser Intensity and smart gain: High. Scale bar, 20 μ m.



Copyright ©2025 Genuin Biotechnologies LLC

Western blotting analysis using anti-carbamoyl-phosphate synthase 1 antibody (Cat#4594). Total cell lysates (30 μ g) from various cell lines were loaded and separated by SDS-PAGE. The blot was incubated with anti-carbamoyl-phosphate synthase 1 antibody (Cat#4594, 1:5,000) and HRP-conjugated goat anti-rabbit secondary antibody (Cat#201, 1:20,000) respectively. Image was developed using NaQ™ ECL Substrate Kit (Cat#716).

SUPPORT

SUPPORT@GENUINBIOTECH.COM
TEL: +1-540-855-7041

ORDERS

SALES@GENUINBIOTECH.COM
FAX: +1-540-855-7041

WWW.GENUINBIOTECH.COM