

Anti-Arp2 Recombinant Rabbit Monoclonal Antibody



Catalog #: 4597

Aliases

ACTR2; Actin Related Protein 2; ARP2; ARP2 Actin Related Protein 2 Homolog; Actin-Related Protein 2; Actin-Like Protein 2; ARP2 (Actin-Related Protein 2, Yeast) Homolog; ARP2 Actin-Related Protein 2 Homolog (Yeast)

Background

Gene Name: ACTR2

NCBI Gene Entry: [10097](#)

UniProt Entry: [P61160](#)

Application Information

Molecular Weight: Predicted, 45 kDa; observed, 37 kDa

Clonality: Rabbit monoclonal antibody

Clone ID: 24GB12000

Species Reactivity: Human, mouse, rat

Applications Tested: Western blotting (WB), flow cytometry (FCM), immunocytochemistry (IC)

Immunogen

A synthesized peptide derived from human Arp2

Isotype

Rabbit IgG

Storage Buffer

Supplied in PBS (pH 7.4) containing 50% glycerol, and 0.02% sodium azide.

Storage

Store at -20 °C for one year.

Recommended Dilutions

Western Blotting (WB): 1:1,000-1:5,000

Flow Cytometry (FCM): 1:2,000

Immunocytochemistry (IC): 1:100-1:1,000

Note: This product is for research use only.

SUPPORT

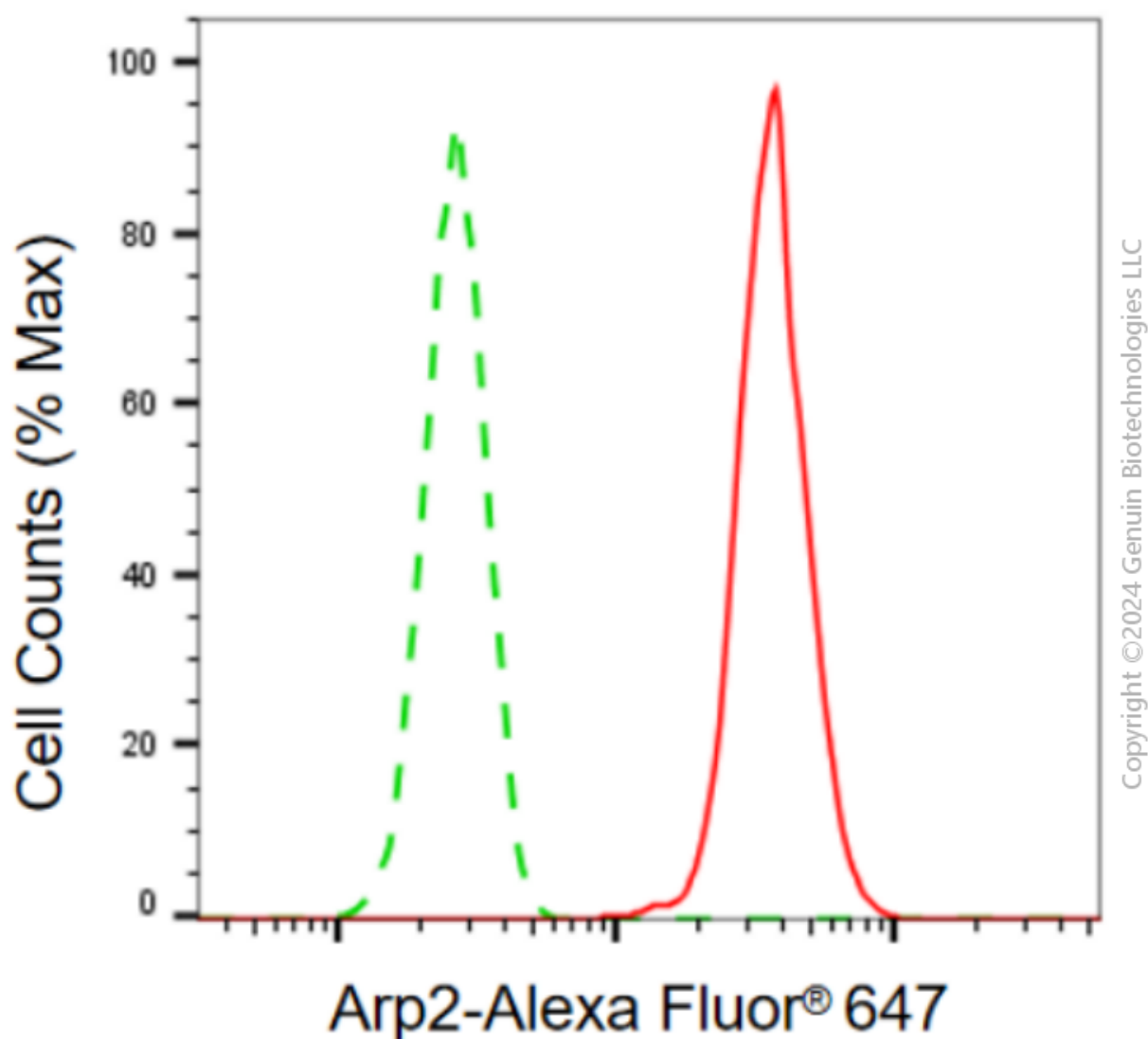
SUPPORT@GENUINBIOTECH.COM
TEL: +1-540-855-7041

ORDERS

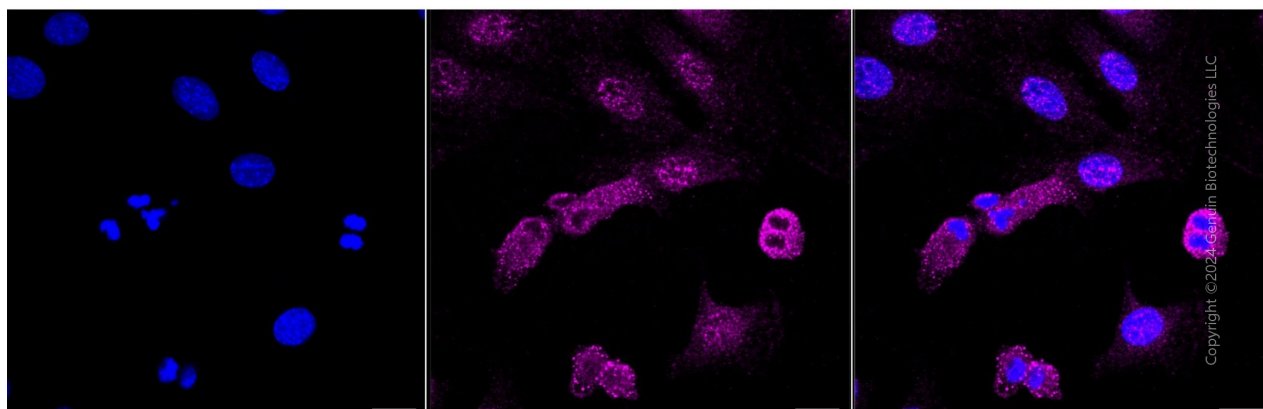
SALES@GENUINBIOTECH.COM
FAX: +1-540-855-7041

WWW.GENUINBIOTECH.COM

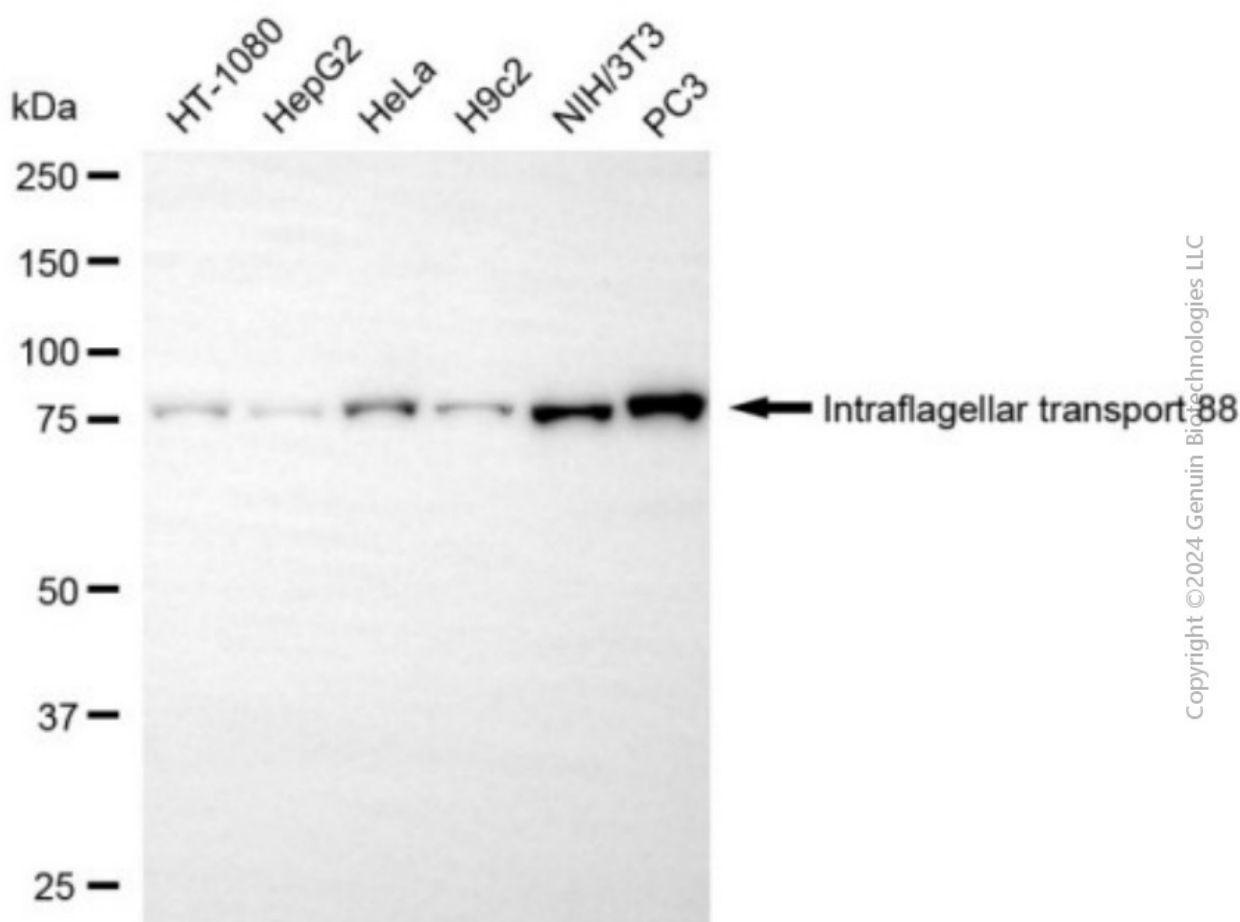
Validation Data



Flow cytometric analysis of Arp2 expression in C2C12 cells using anti-Arp2 antibody (Cat#4597, 1:2,000). Green, isotype control; red, Arp2.



Immunocytochemical staining of C2C12 cells with anti-Arp2 antibody (Cat#4597, 1:1,000). Nuclei were stained blue with DAPI; Arp2 was stained magenta with Alexa Fluor® 647. Images were taken using Leica stellaris 5. Protein abundance based on laser Intensity and smart gain: Medium. Scale bar, 20 μ m.



Western blotting analysis using anti-Arp2 antibody (Cat#4597). Total cell lysates (30 μ g) from various cell lines were loaded and separated by SDS-PAGE. The blot was incubated with anti-Arp2 antibody (Cat#4597, 1:5,000) and HRP-conjugated goat anti-rabbit secondary antibody

SUPPORT

SUPPORT@GENUINBIOTECH.COM
TEL: +1-540-855-7041

ORDERS

SALES@GENUINBIOTECH.COM
FAX: +1-540-855-7041

WWW.GENUINBIOTECH.COM

Anti-Arp2 Recombinant Rabbit Monoclonal Antibody

PAGE 4

(Cat#201, 1:20,000) respectively. Image was developed using NaQ™ ECL Substrate Kit (Cat#716).

SUPPORT

SUPPORT@GENUINBIOTECH.COM
TEL: +1-540-855-7041

ORDERS

SALES@GENUINBIOTECH.COM
FAX: +1-540-855-7041

WWW.GENUINBIOTECH.COM