

Anti-Syndecan binding protein Recombinant Rabbit Monoclonal Antibody



Catalog #: 4599

Aliases

SDCBP; Syndecan Binding Protein; MDA-9; SYCL; Syntenin-1; Pro-TGF-Alpha Cytoplasmic Domain-Interacting Protein 18; Syndecan-Binding Protein 1; Scaffold Protein Pbp1; TACIP18; SDCBP1; MDA9; Melanoma Differentiation Associated Protein-9; Melanoma Differentiation-Associated Protein 9; Syndecan Binding Protein (Syntenin); Syntenin; ST1

Background

Gene Name: SDCBP

NCBI Gene Entry: [6386](#)

UniProt Entry: [O00560](#)

Application Information

Molecular Weight: Predicted, 32 kDa; observed, 32 kDa

Clonality: Rabbit monoclonal antibody

Clone ID: 24GB12010

Species Reactivity: Human

Applications Tested: Western blotting (WB), flow cytometry (FCM), immunocytochemistry (IC)

Immunogen

A synthesized peptide derived from human Syntenin

Isotype

Rabbit IgG

Storage Buffer

Supplied in PBS (pH 7.4) containing 50% glycerol, and 0.02% sodium azide.

Storage

Store at -20 °C for one year.

Recommended Dilutions

Western Blotting (WB): 1:1,000-1:5,000

Flow Cytometry (FCM): 1:2,000

Immunocytochemistry (IC): 1:100-1:1,000

SUPPORT

SUPPORT@GENUINBIOTECH.COM
TEL: +1-540-855-7041

ORDERS

SALES@GENUINBIOTECH.COM
FAX: +1-540-855-7041

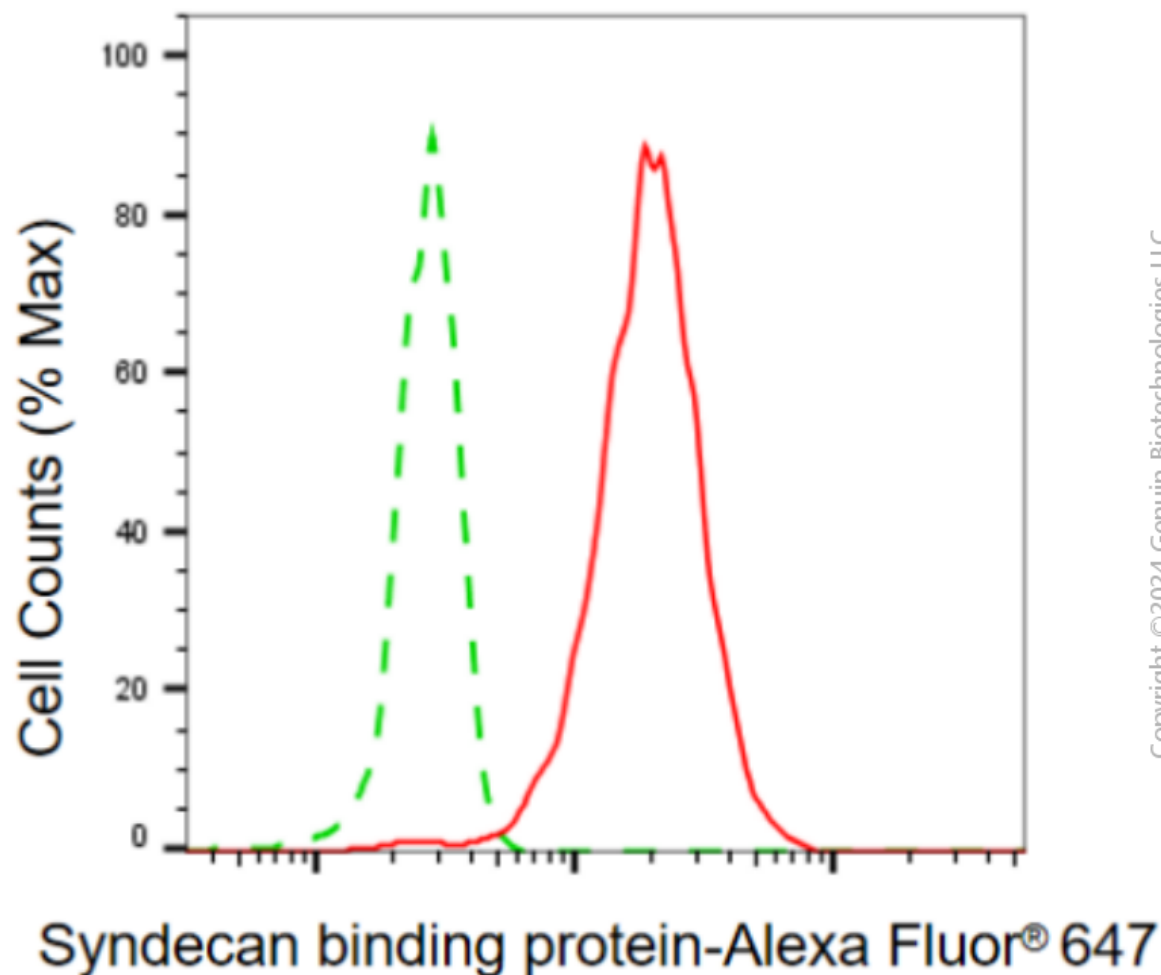
WWW.GENUINBIOTECH.COM

Anti-Syndecan binding protein Recombinant Rabbit Monoclonal Antibody

PAGE 2

Note: This product is for research use only.

Validation Data



Flow cytometric analysis of syndecan binding protein expression in HepG2 cells using anti-syndecan binding protein antibody (Cat#4599, 1:2,000). Green, isotype control; red, syndecan binding protein.

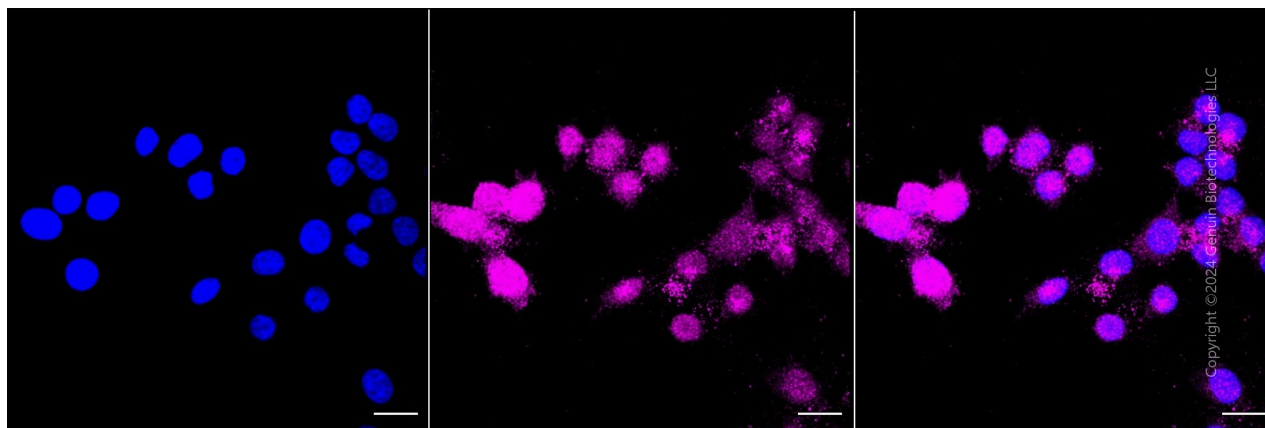
SUPPORT

SUPPORT@GENUINBIOTECH.COM
TEL: +1-540-855-7041

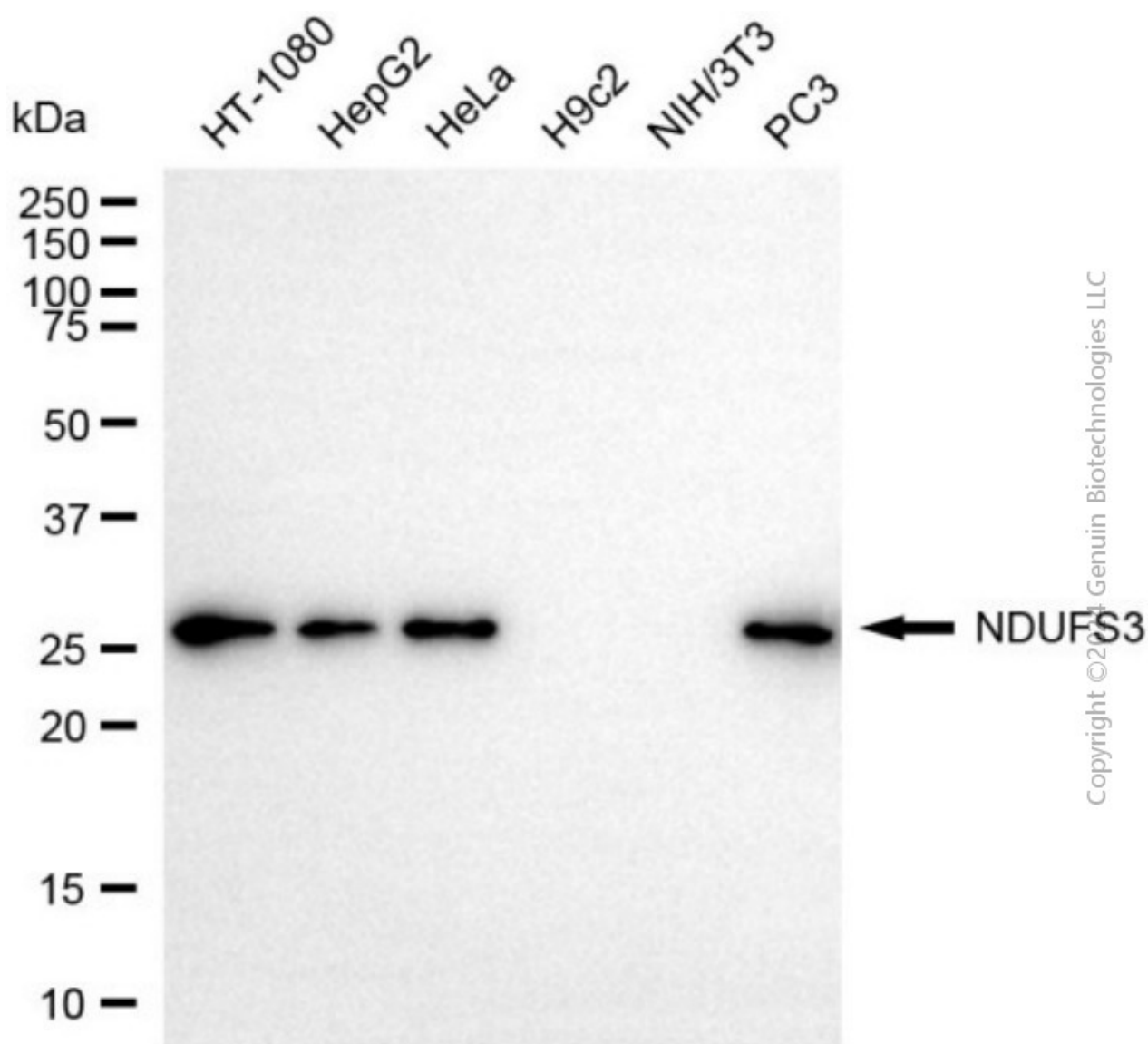
ORDERS

SALES@GENUINBIOTECH.COM
FAX: +1-540-855-7041

WWW.GENUINBIOTECH.COM



Immunocytochemical staining of HepG2 cells with anti-Syndecan binding protein antibody (Cat#4599, 1:1,000). Nuclei were stained blue with DAPI; Syndecan binding protein was stained magenta with Alexa Fluor® 647. Images were taken using Leica stellaris 5. Protein abundance based on laser Intensity and smart gain: Medium. Scale bar, 20 μ m.



Western blotting analysis using anti-syndecan binding protein antibody (Cat#4599). Total cell lysates (30 µg) from various cell lines were loaded and separated by SDS-PAGE. The blot was incubated with anti-syndecan binding protein antibody (Cat#4599, 1:5,000) and HRP-conjugated goat anti-rabbit secondary antibody (Cat#201, 1:20,000) respectively. Image was developed using NaQ™ ECL Substrate Kit (Cat#716).