

Anti-RRM1 Recombinant Rabbit Monoclonal Antibody



Catalog #: 4603

Aliases

Ribonucleotide Reductase Catalytic Subunit M1; Ribonucleoside-Diphosphate Reductase Large Subunit; Ribonucleoside-Diphosphate Reductase Subunit M1; Ribonucleotide Reductase M1 Polypeptide; EC 1.17.4.1; RR1; Ribonucleotide Reductase Large Subunit; Ribonucleotide Reductase, R1 Subunit; RIR1; R1

Background

Gene Name: RRM1

NCBI Gene Entry: [6240](#)

UniProt Entry: [P23921](#)

Application Information

Molecular Weight: Predicted, 90 kDa; observed, 75 kDa

Clonality: Rabbit monoclonal antibody

Clone ID: 24GB12030

Species Reactivity: Human, mouse, rat

Applications Tested: Western blotting (WB), flow cytometry (FCM), immunocytochemistry (IC)

Immunogen

A synthesized peptide derived from human beta RRM1

Isotype

Rabbit IgG

Storage Buffer

Supplied in PBS (pH 7.4) containing 50% glycerol, and 0.02% sodium azide.

Storage

Store at -20 °C for one year.

Recommended Dilutions

Western Blotting (WB): 1:1,000-1:5,000

Flow Cytometry (FCM): 1:2,000

Immunocytochemistry (IC): 1:100-1:1,000

SUPPORT

SUPPORT@GENUINBIOTECH.COM
TEL: +1-540-855-7041

ORDERS

SALES@GENUINBIOTECH.COM
FAX: +1-540-855-7041

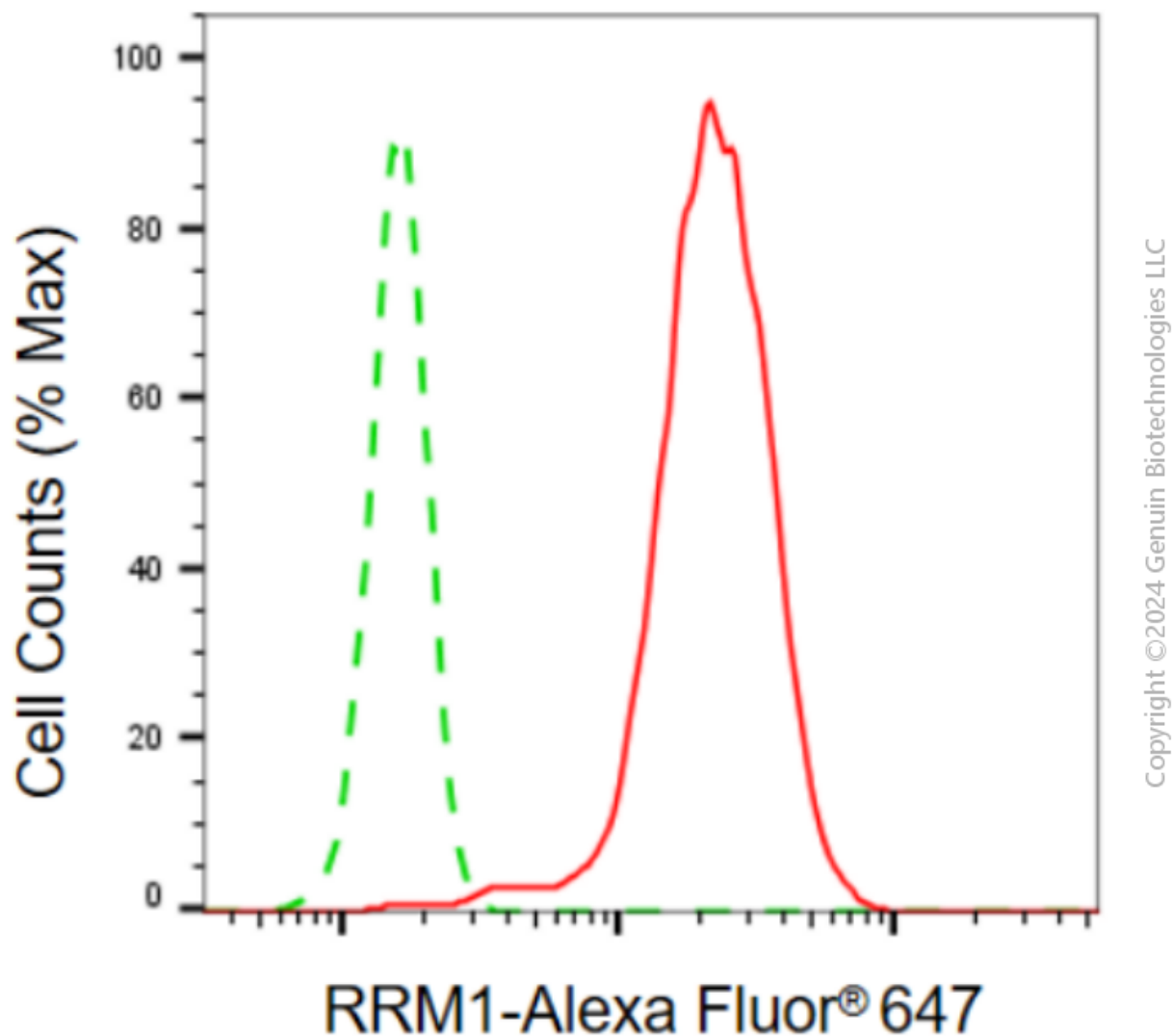
WWW.GENUINBIOTECH.COM

Anti-RRM1 Recombinant Rabbit Monoclonal Antibody

PAGE 2

Note: This product is for research use only.

Validation Data



Flow cytometric analysis of RRM1 expression in HepG2 cells using anti-RRM1 antibody (Cat#4603, 1:2,000). Green, isotype control; red, RRM1.

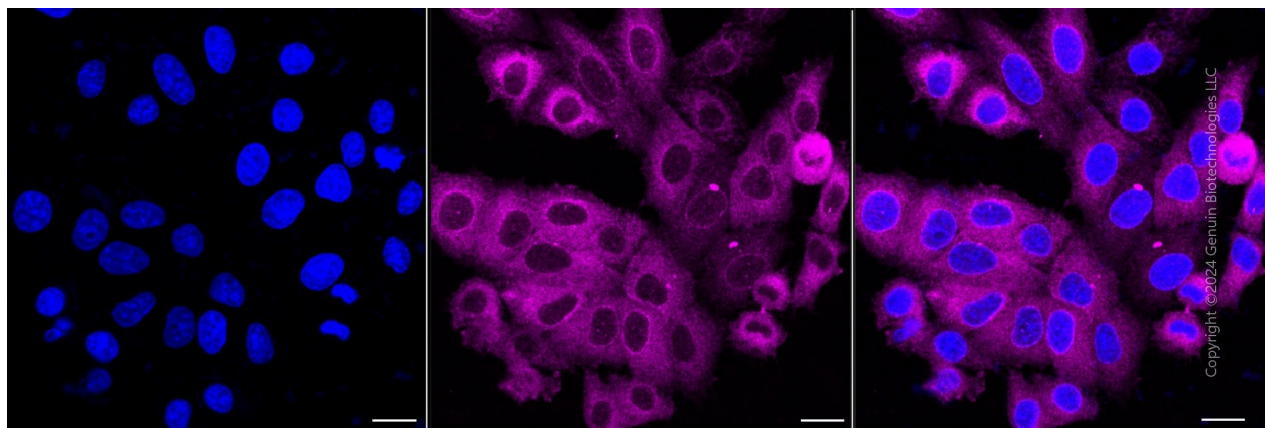
SUPPORT

SUPPORT@GENUINBIOTECH.COM
TEL: +1-540-855-7041

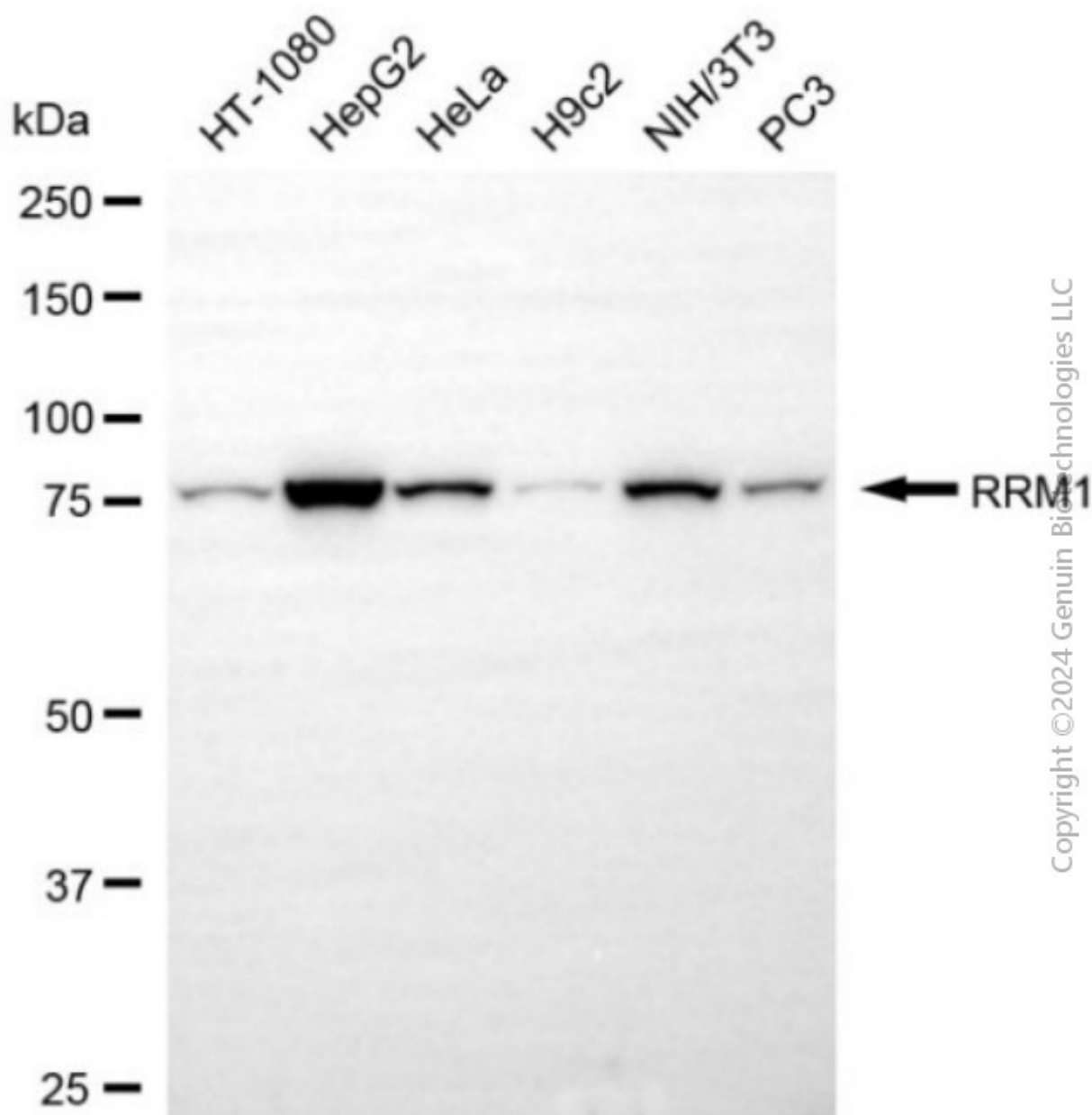
ORDERS

SALES@GENUINBIOTECH.COM
FAX: +1-540-855-7041

WWW.GENUINBIOTECH.COM



Immunocytochemical staining of HepG2 cells with anti-RRM1 antibody (Cat#4603, 1:1,000) . Nuclei were stained blue with DAPI; RRM1 was stained magenta with Alexa Fluor® 647. Images were taken using Leica stellaris 5. Protein abundance based on laser Intensity and smart gain: Medium. Scale bar, 20 μ m.



Western blotting analysis using anti-RRM1 antibody (Cat#4603). Total cell lysates (30 µg) from various cell lines were loaded and separated by SDS-PAGE. The blot was incubated with anti-RRM1 antibody (Cat#4603, 1:5,000) and HRP-conjugated goat anti-rabbit secondary antibody (Cat#201, 1:20,000) respectively. Image was developed using NaQ™ ECL Substrate Kit (Cat#716).