

Anti-Cystathionine beta-synthase Recombinant Rabbit Monoclonal Antibody



Catalog #: 4605

Aliases

CBS; Cystathionine Beta-Synthase; HIP4; Serine Sulphydrase; Beta-Thionase; EC 4.2.1.22; Cystathionine Beta-Synthase-Like Protein; Cystathionine-Beta-Synthase; Methylcysteine Synthase; CBSL

Background

Gene Name: CBS

NCBI Gene Entry: [875](#)

UniProt Entry: [P35520](#)

Application Information

Molecular Weight: Predicted, 61 kDa; observed, 61 kDa

Clonality: Rabbit monoclonal antibody

Clone ID: 24GB12040

Species Reactivity: Human

Applications Tested: Western blotting (WB), flow cytometry (FCM), immunocytochemistry (IC)

Immunogen

A synthesized peptide derived from human CBS

Isotype

Rabbit IgG

Storage Buffer

Supplied in PBS (pH 7.4) containing 50% glycerol, and 0.02% sodium azide.

Storage

Store at -20 °C for one year.

Recommended Dilutions

Western Blotting (WB): 1:1,000-1:5,000

Flow Cytometry (FCM): 1:2,000

Immunocytochemistry (IC): 1:100-1:1,000

Note: This product is for research use only.

SUPPORT

SUPPORT@GENUINBIOTECH.COM
TEL: +1-540-855-7041

ORDERS

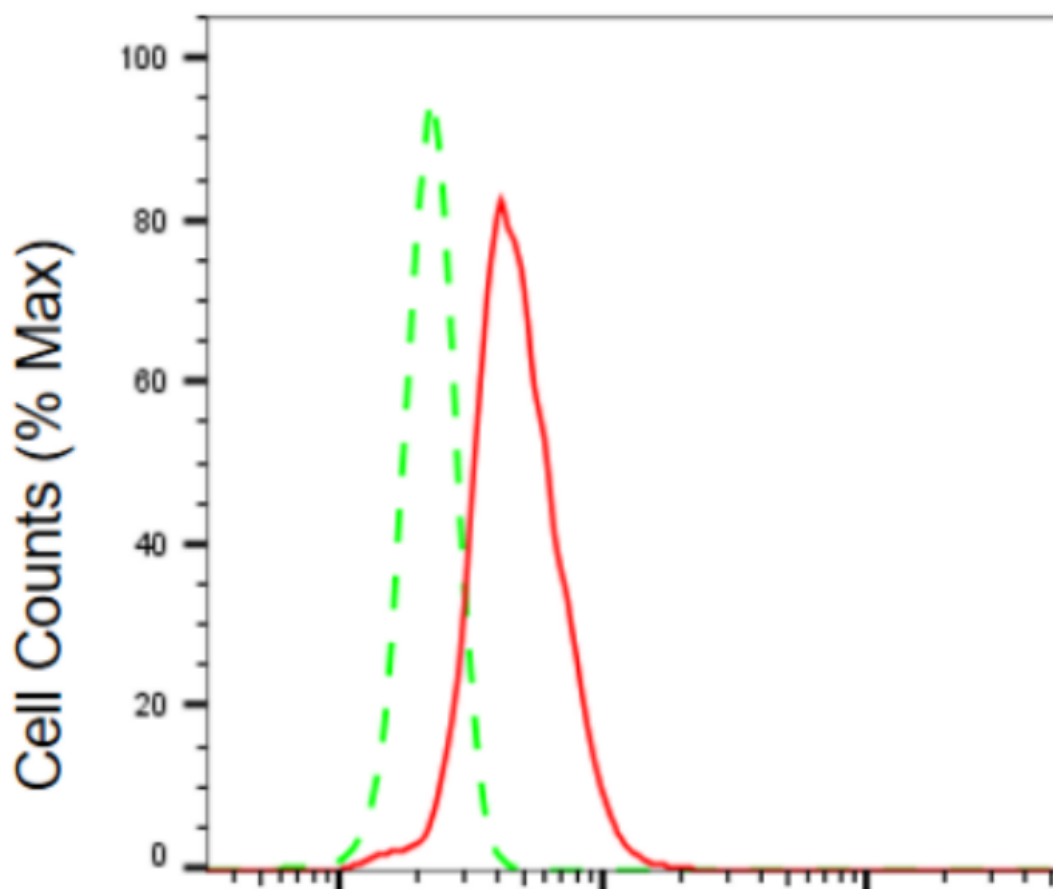
SALES@GENUINBIOTECH.COM
FAX: +1-540-855-7041

WWW.GENUINBIOTECH.COM

Anti-Cystathionine beta-synthase Recombinant Rabbit Monoclonal Antibody

PAGE 2

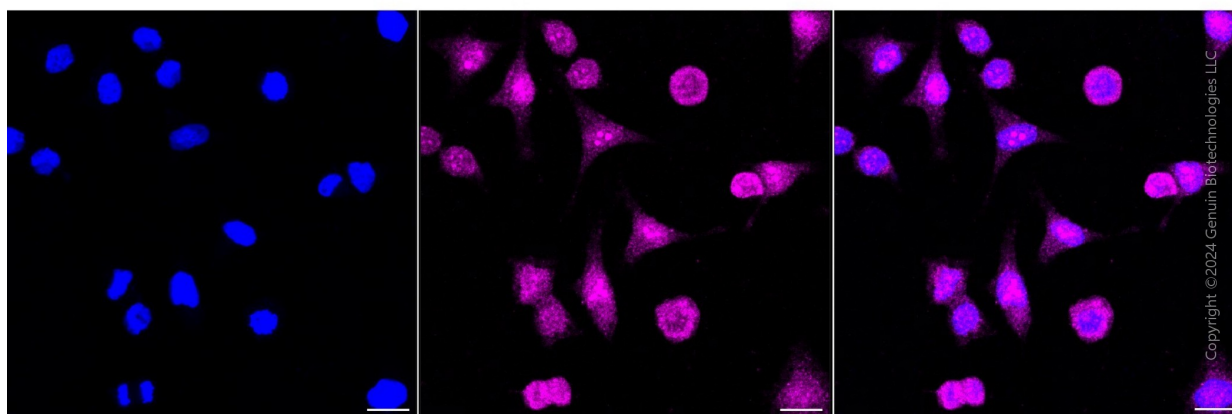
Validation Data



Copyright ©2024 Genuin Biotechnologies LLC

Cystathionine beta-synthase-Alexa Fluor® 647

Flow cytometric analysis of cystathionine beta-synthase expression in HeLa cells using anti-cystathionine beta-synthase antibody (Cat#4605, 1:2,000). Green, isotype control; red, cystathionine beta-synthase.



Copyright ©2024 Genuin Biotechnologies LLC

SUPPORT

SUPPORT@GENUINBIOTECH.COM
TEL: +1-540-855-7041

ORDERS

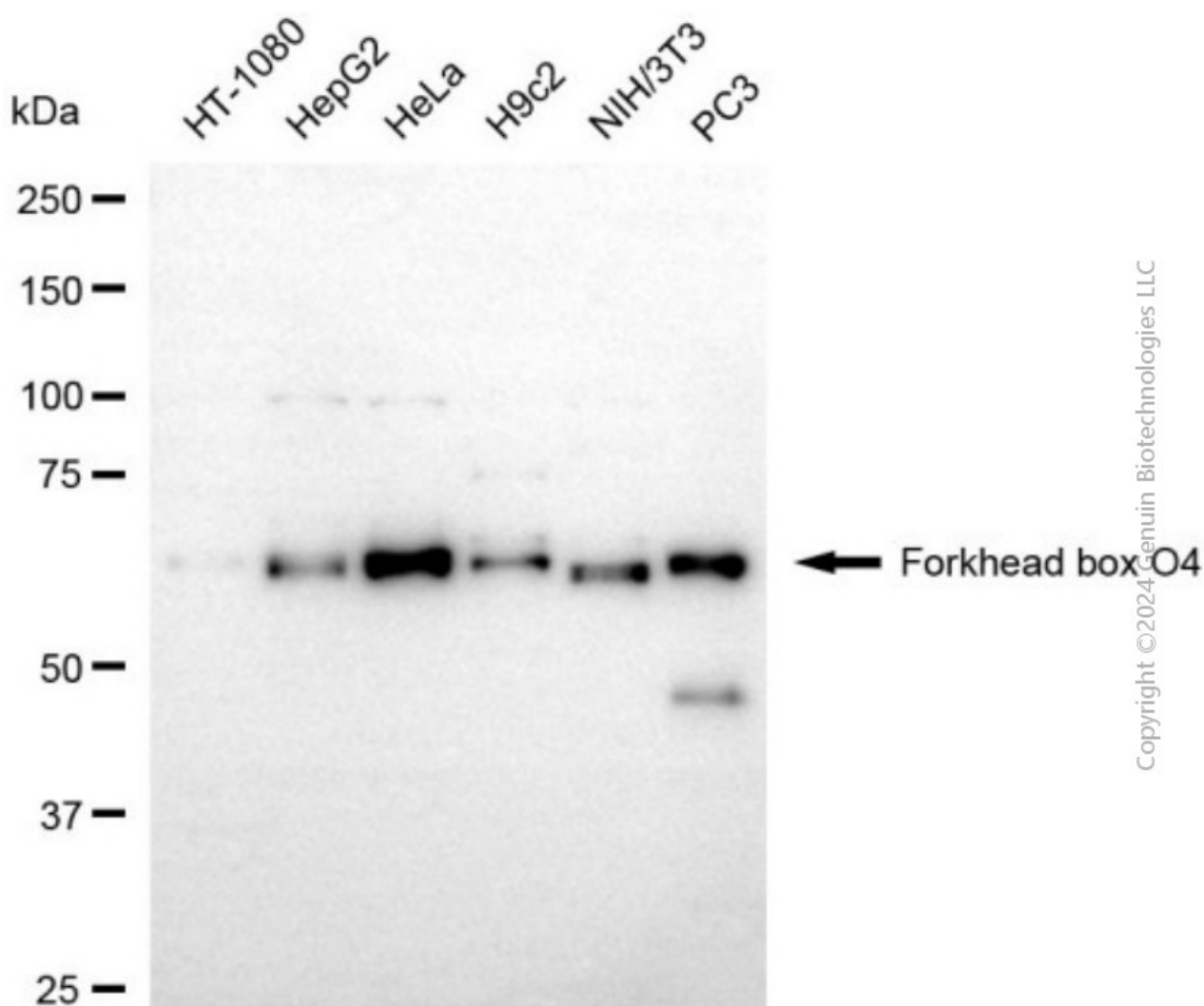
SALES@GENUINBIOTECH.COM
FAX: +1-540-855-7041

WWW.GENUINBIOTECH.COM

Anti-Cystathionine beta-synthase Recombinant Rabbit Monoclonal Antibody

PAGE 3

Immunocytochemical staining of Hela cells with anti-Cystathionine beta-synthase antibody (Cat#4605, 1:1,000). Nuclei were stained blue with DAPI; Cystathionine beta-synthase was stained magenta with Alexa Fluor® 647. Images were taken using Leica stellaris 5. Protein abundance based on laser Intensity and smart gain: Medium. Scale bar, 20 μ m.



Western blotting analysis using anti-cystathionine beta-synthase antibody (Cat#4605). Total cell lysates (30 μ g) from various cell lines were loaded and separated by SDS-PAGE. The blot was incubated with anti-cystathionine beta-synthase antibody (Cat#4605, 1:5,000) and HRP-conjugated goat anti-rabbit secondary antibody (Cat#201, 1:20,000) respectively. Image was developed using NaQ™ ECL Substrate Kit (Cat#716).

SUPPORT

SUPPORT@GENUINBIOTECH.COM
TEL: +1-540-855-7041

ORDERS

SALES@GENUINBIOTECH.COM
FAX: +1-540-855-7041

WWW.GENUINBIOTECH.COM