

# Anti-DDB2 Recombinant Rabbit Monoclonal Antibody



**Catalog #: 4614**

## Aliases

DDB2; Damage Specific DNA Binding Protein 2; UV-Damaged DNA-Binding Protein 2; DDB P48 Subunit; UV-DDB2; DDBB; XPE; Xeroderma Pigmentosum Group E Protein; DNA Damage-Binding Protein 2; FLJ34321; Damage-Specific DNA Binding Protein 2 (48kD); Damage-Specific DNA Binding Protein 2, 48kDa; Damage-Specific DNA-Binding Protein 2; UV-DDB; DDBb

## Background

Gene Name: DDB2

NCBI Gene Entry: [1643](#)

UniProt Entry: [Q92466](#)

## Application Information

Molecular Weight: Predicted, 48 kDa; observed, 45 kDa

Clonality: Rabbit monoclonal antibody

Clone ID: 24GB12080

Species Reactivity: Human, mouse

Applications Tested: Western blotting (WB), flow cytometry (FCM), immunocytochemistry (IC)

## Immunogen

A synthesized peptide derived from human DDB2

## Isotype

Rabbit IgG

## Storage Buffer

Supplied in PBS (pH 7.4) containing 50% glycerol, and 0.02% sodium azide.

## Storage

Store at -20 °C for one year.

## Recommended Dilutions

Western Blotting (WB): 1:1,000-1:5,000

Flow Cytometry (FCM): 1:2,000

Immunocytochemistry (IC): 1:100-1:1,000

---

### SUPPORT

SUPPORT@GENUINBIOTECH.COM  
TEL: +1-540-855-7041

### ORDERS

SALES@GENUINBIOTECH.COM  
FAX: +1-540-855-7041

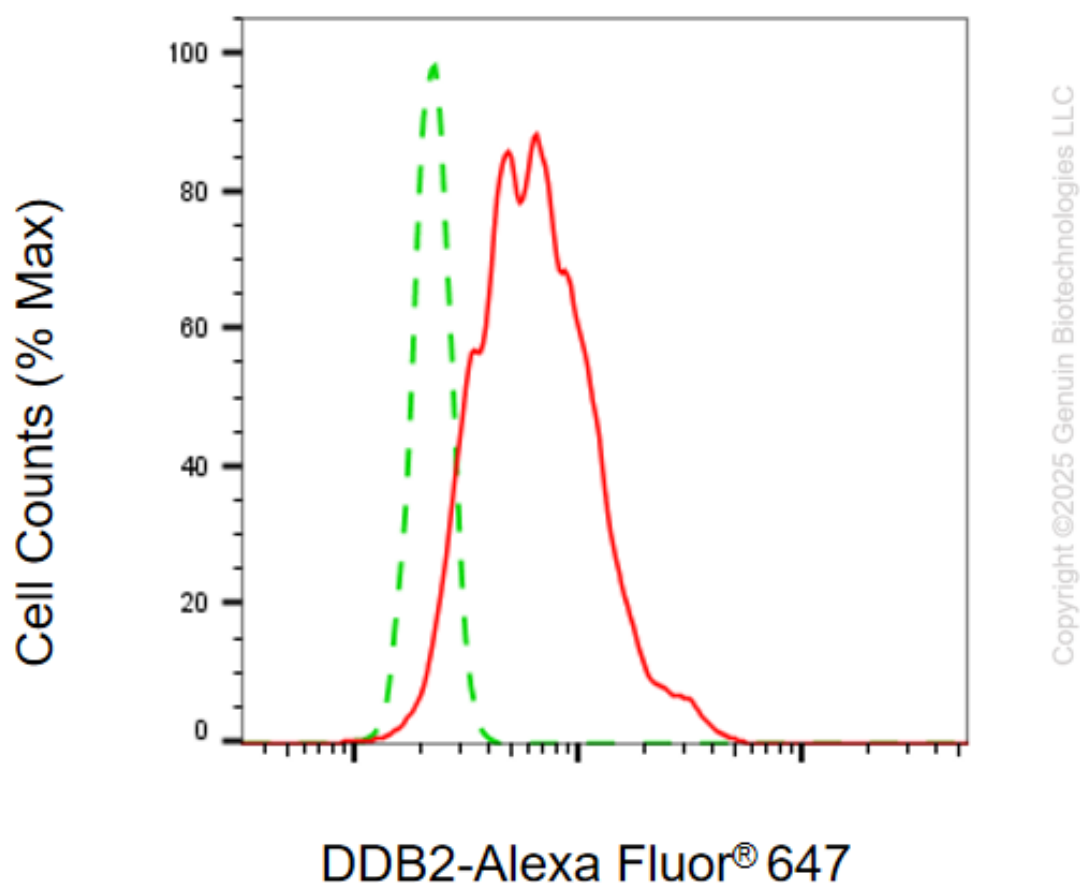
[WWW.GENUINBIOTECH.COM](http://WWW.GENUINBIOTECH.COM)

# Anti-DDB2 Recombinant Rabbit Monoclonal Antibody

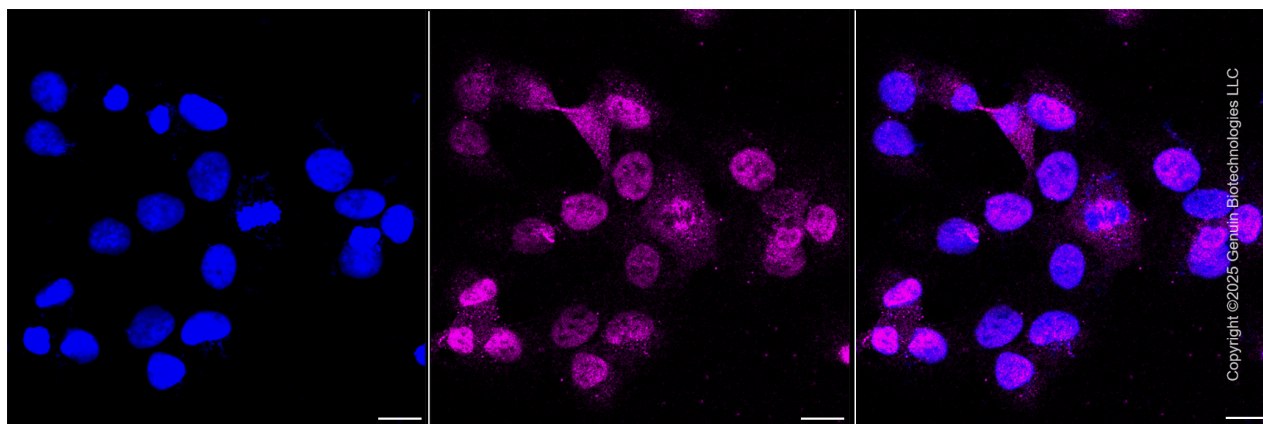
PAGE 2

**Note:** This product is for research use only.

## Validation Data



Flow cytometric analysis of DDB2 expression in HT-1080 cells using anti-DDB2 antibody (Cat#4614, 1:2,000). Green, isotype control; red, DDB2.



Immunocytochemical staining of HT-1080 cells with anti-DDB2 antibody (Cat#4614, 1:1,000) . Nuclei were stained blue with DAPI; DDB2 was stained magenta with Alexa Fluor® 647. Images

### SUPPORT

SUPPORT@GENUINBIOTECH.COM  
TEL: +1-540-855-7041

### ORDERS

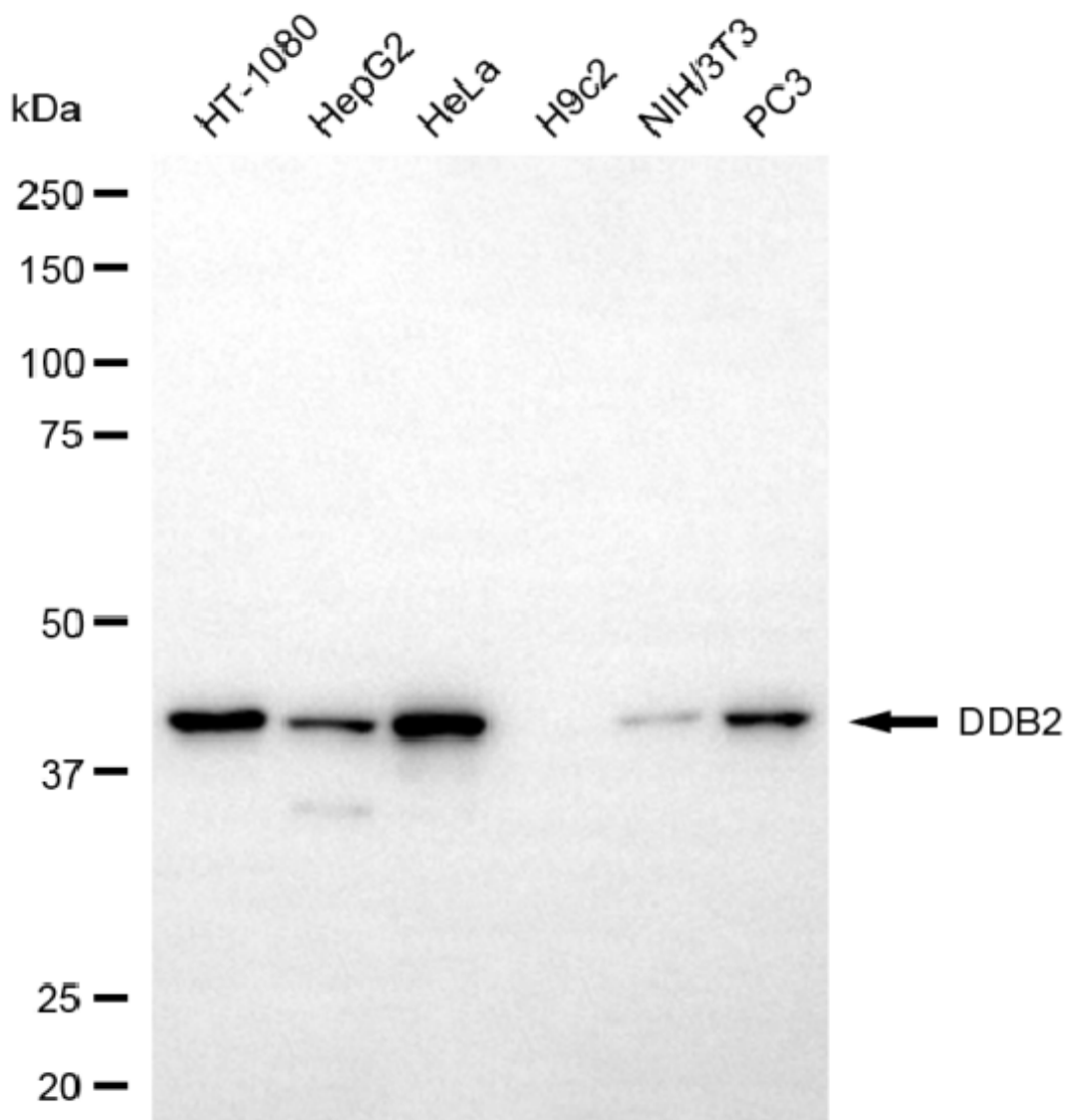
SALES@GENUINBIOTECH.COM  
FAX: +1-540-855-7041

[WWW.GENUINBIOTECH.COM](http://WWW.GENUINBIOTECH.COM)

## Anti-DDB2 Recombinant Rabbit Monoclonal Antibody

PAGE 3

were taken using Leica stellaris 5. Protein abundance based on laser Intensity and smart gain: Medium. Scale bar, 20  $\mu$ m.



Copyright ©2025 Genuin Biotechnologies LLC

Western blotting analysis using anti-DDB2 antibody (Cat#4614). Total cell lysates (30  $\mu$ g) from various cell lines were loaded and separated by SDS-PAGE. The blot was incubated with anti-DDB2 antibody (Cat#4614, 1:5,000) and HRP-conjugated goat anti-rabbit secondary antibody (Cat#201, 1:20,000) respectively. Image was developed using NaQ™ ECL Substrate Kit (Cat#716).

### SUPPORT

SUPPORT@GENUINBIOTECH.COM  
TEL: +1-540-855-7041

### ORDERS

SALES@GENUINBIOTECH.COM  
FAX: +1-540-855-7041

[WWW.GENUINBIOTECH.COM](http://WWW.GENUINBIOTECH.COM)