

Anti-KHSRP Recombinant Rabbit Monoclonal Antibody



Catalog #: 4615

Aliases

KHSRP; KH-Type Splicing Regulatory Protein; FUBP2; KSRP; FBP2; Far Upstream Element-Binding Protein; FUSE-Binding Protein; P75; Epididymis Secretory Sperm Binding Protein; KH Type-Splicing Regulatory Protein; FUSE Binding Protein 2

Background

Gene Name: KHSRP

NCBI Gene Entry: [8570](#)

UniProt Entry: [Q92945](#)

Application Information

Molecular Weight: Predicted, 73 kDa; observed, 73 kDa

Clonality: Rabbit monoclonal antibody

Clone ID: 24GB12085

Species Reactivity: Human, mouse, rat

Applications Tested: Western blotting (WB), flow cytometry (FCM), immunocytochemistry (IC)

Immunogen

A synthesized peptide derived from human KHSRP

Isotype

Rabbit IgG

Storage Buffer

Supplied in PBS (pH 7.4) containing 50% glycerol, and 0.02% sodium azide.

Storage

Store at -20 °C for one year.

Recommended Dilutions

Western Blotting (WB): 1:1,000-1:5,000

Flow Cytometry (FCM): 1:2,000

Immunocytochemistry (IC): 1:100-1:1,000

Note: This product is for research use only.

SUPPORT

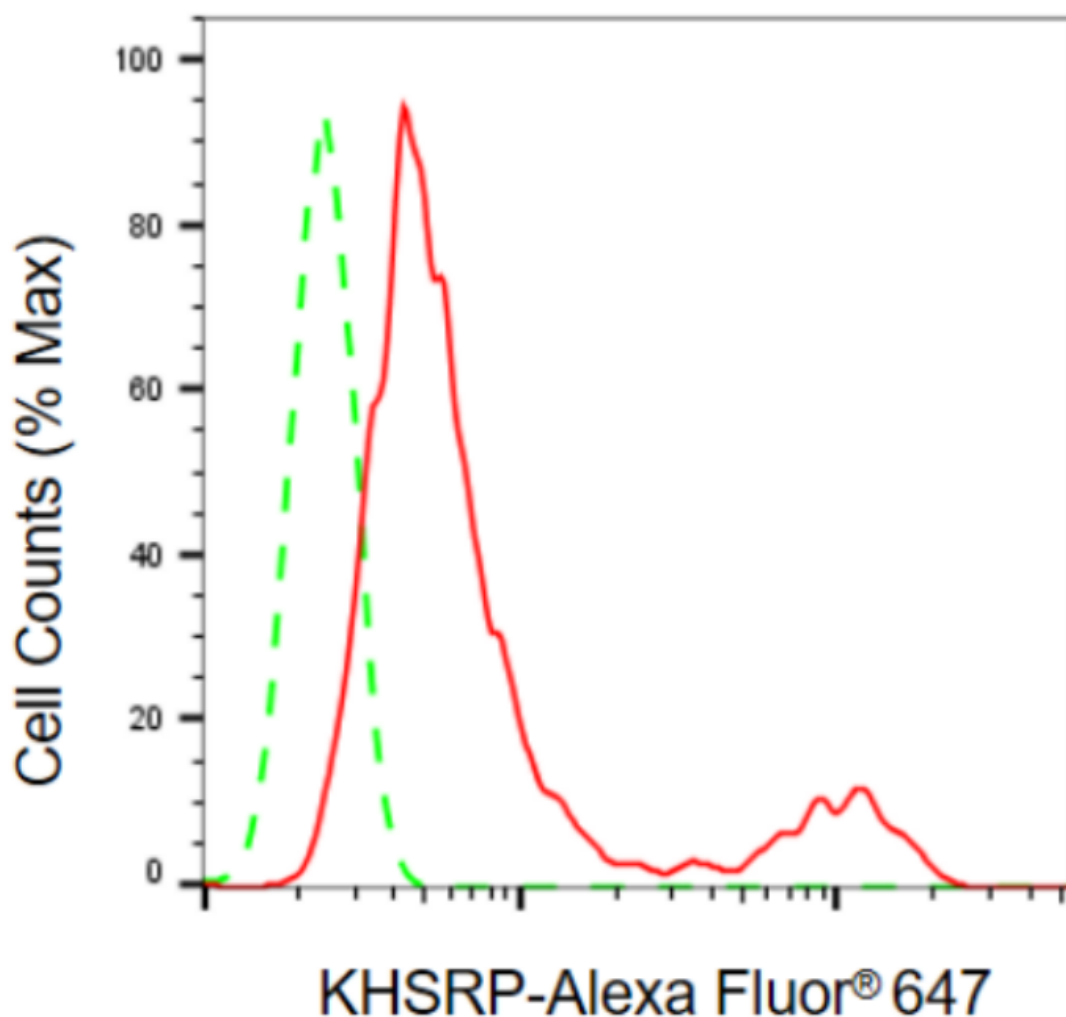
SUPPORT@GENUINBIOTECH.COM
TEL: +1-540-855-7041

ORDERS

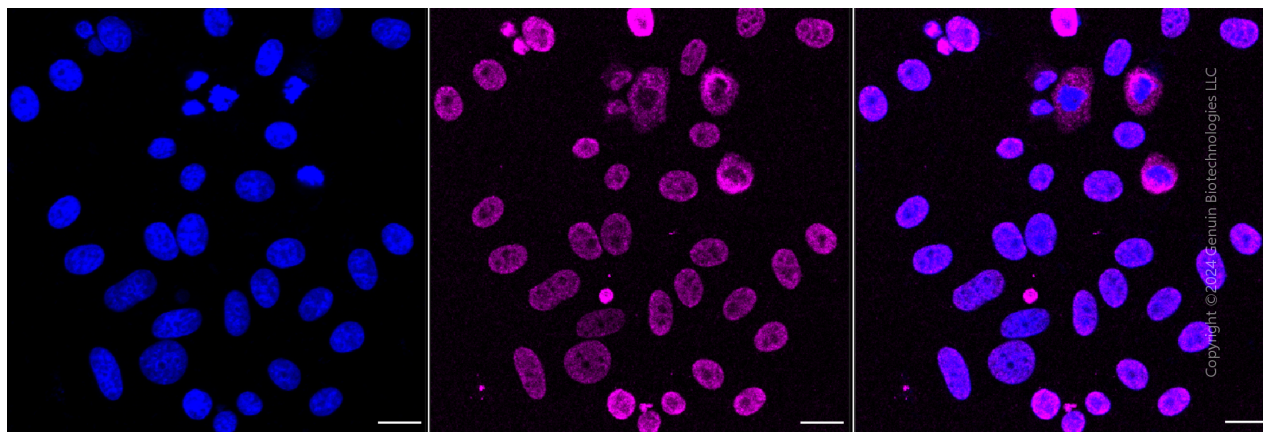
SALES@GENUINBIOTECH.COM
FAX: +1-540-855-7041

WWW.GENUINBIOTECH.COM

Validation Data



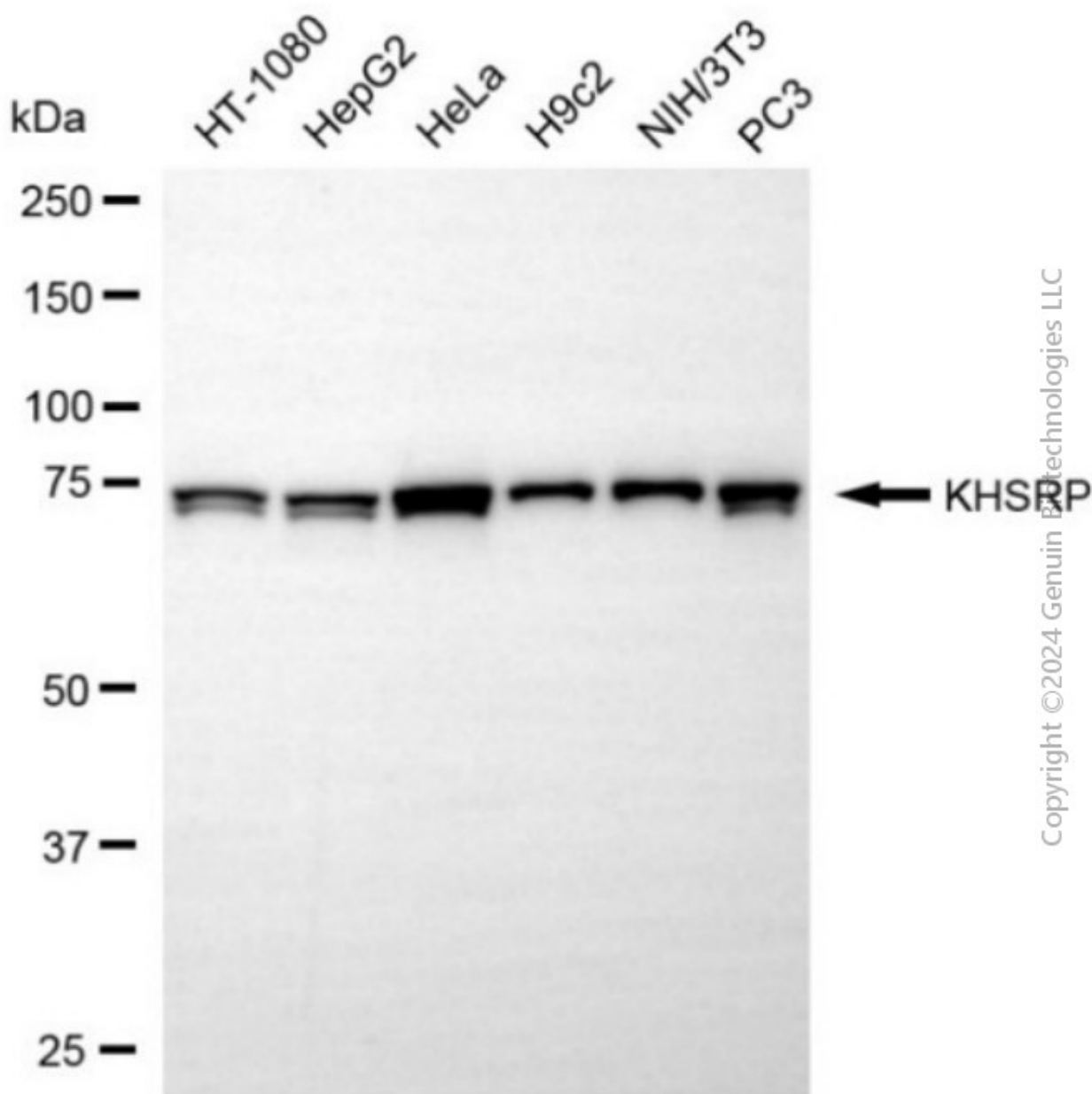
Flow cytometric analysis of KHSRP expression in HepG2 cells using anti-KHSRP antibody (Cat#4615, 1:2,000). Green, isotype control; red, KHSRP.



Anti-KHSRP Recombinant Rabbit Monoclonal Antibody

PAGE 3

Immunocytochemical staining of HepG2 cells with anti-KHSRP antibody (Cat#4615, 1:1,000). Nuclei were stained blue with DAPI; KHSRP was stained magenta with Alexa Fluor® 647. Images were taken using Leica stellaris 5. Protein abundance based on laser Intensity and smart gain: Medium. Scale bar, 20 μ m.



Western blotting analysis using anti-KHSRP antibody (Cat#4615). Total cell lysates (30 μ g) from various cell lines were loaded and separated by SDS-PAGE. The blot was incubated with anti-KHSRP antibody (Cat#4615, 1:5,000) and HRP-conjugated goat anti-rabbit secondary antibody (Cat#201, 1:20,000) respectively. Image was developed using NaQ™ ECL Substrate Kit (Cat#716).

SUPPORT

SUPPORT@GENUINBIOTECH.COM
TEL: +1-540-855-7041

ORDERS

SALES@GENUINBIOTECH.COM
FAX: +1-540-855-7041

WWW.GENUINBIOTECH.COM