

Anti-NME1 Recombinant Rabbit Monoclonal Antibody



Catalog #: 4617

Aliases

NME1; NME/NM23 Nucleoside Diphosphate Kinase 1; NM23-H1; NDPKA; NM23; Non-Metastatic Cells 1, Protein (NM23A) Expressed In; Tumor Metastatic Process-Associated Protein; Metastasis Inhibition Factor Nm23; Nucleoside Diphosphate Kinase A; Granzyme A-Activated DNase; NDP Kinase A; EC 2.7.4.6; GAAD; Epididymis Secretory Sperm Binding Protein; NDPK-A; NDK A; NDKA; AWD; NBS; NB

Background

Gene Name: NME1

NCBI Gene Entry: [4830](#)

UniProt Entry: [P15531](#)

Application Information

Molecular Weight: Predicted, 17 kDa; observed, 17 kDa

Clonality: Rabbit monoclonal antibody

Clone ID: 24GB12095

Species Reactivity: Human, rat

Applications Tested: Western blotting (WB), flow cytometry (FCM), immunocytochemistry (IC)

Immunogen

A synthesized peptide derived from human NM23A

Isotype

Rabbit IgG

Storage Buffer

Supplied in PBS (pH 7.4) containing 50% glycerol, and 0.02% sodium azide.

Storage

Store at -20 °C for one year.

Recommended Dilutions

Western Blotting (WB): 1:1,000-1:5,000

Flow Cytometry (FCM): 1:2,000

Immunocytochemistry (IC): 1:100-1:1,000

SUPPORT

SUPPORT@GENUINBIOTECH.COM
TEL: +1-540-855-7041

ORDERS

SALES@GENUINBIOTECH.COM
FAX: +1-540-855-7041

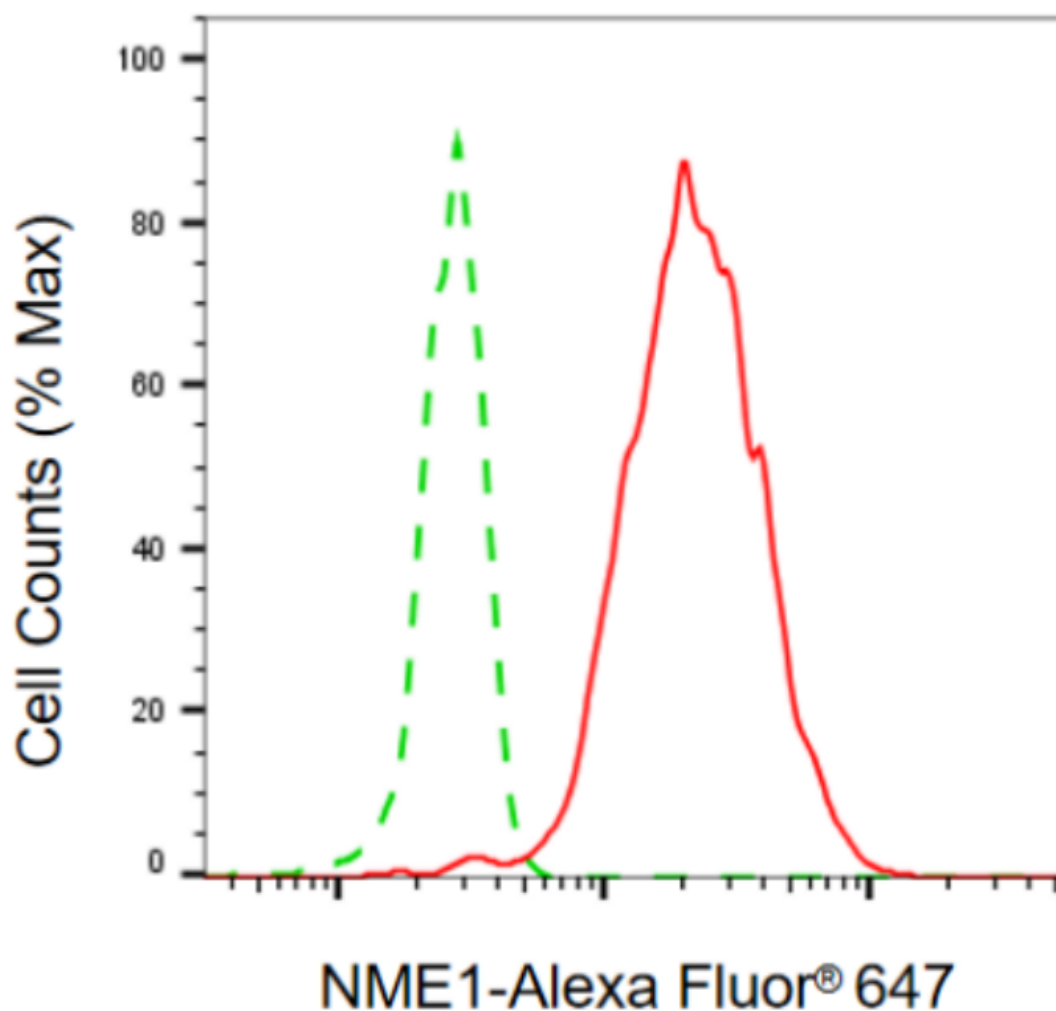
WWW.GENUINBIOTECH.COM

Anti-NME1 Recombinant Rabbit Monoclonal Antibody

PAGE 2

Note: This product is for research use only.

Validation Data



Copyright ©2024 Genuin Biotechnologies LLC

Flow cytometric analysis of NME1 expression in HepG2 cells using anti-NME1 antibody (Cat#4617, 1:2,000). Green, isotype control; red, NME1.

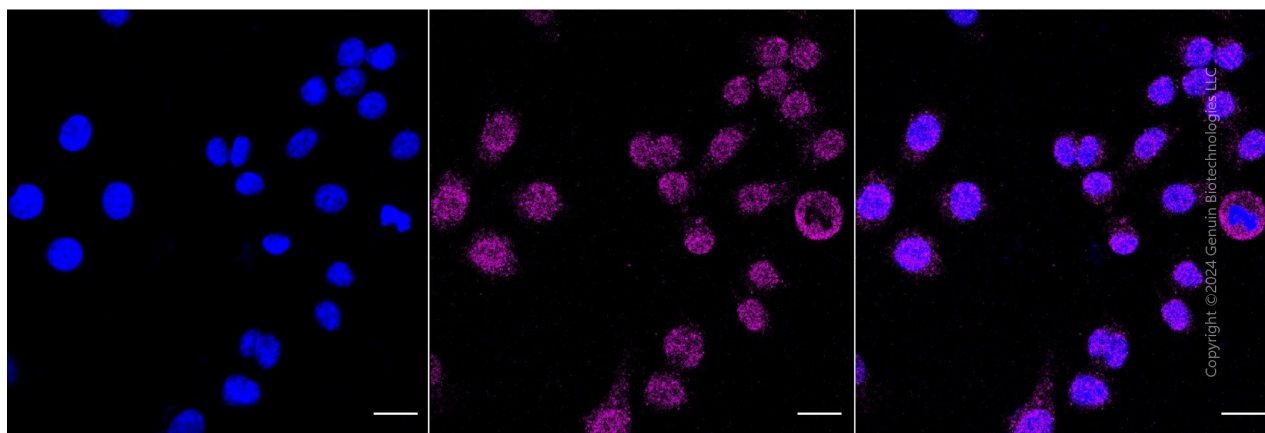
SUPPORT

SUPPORT@GENUINBIOTECH.COM
TEL: +1-540-855-7041

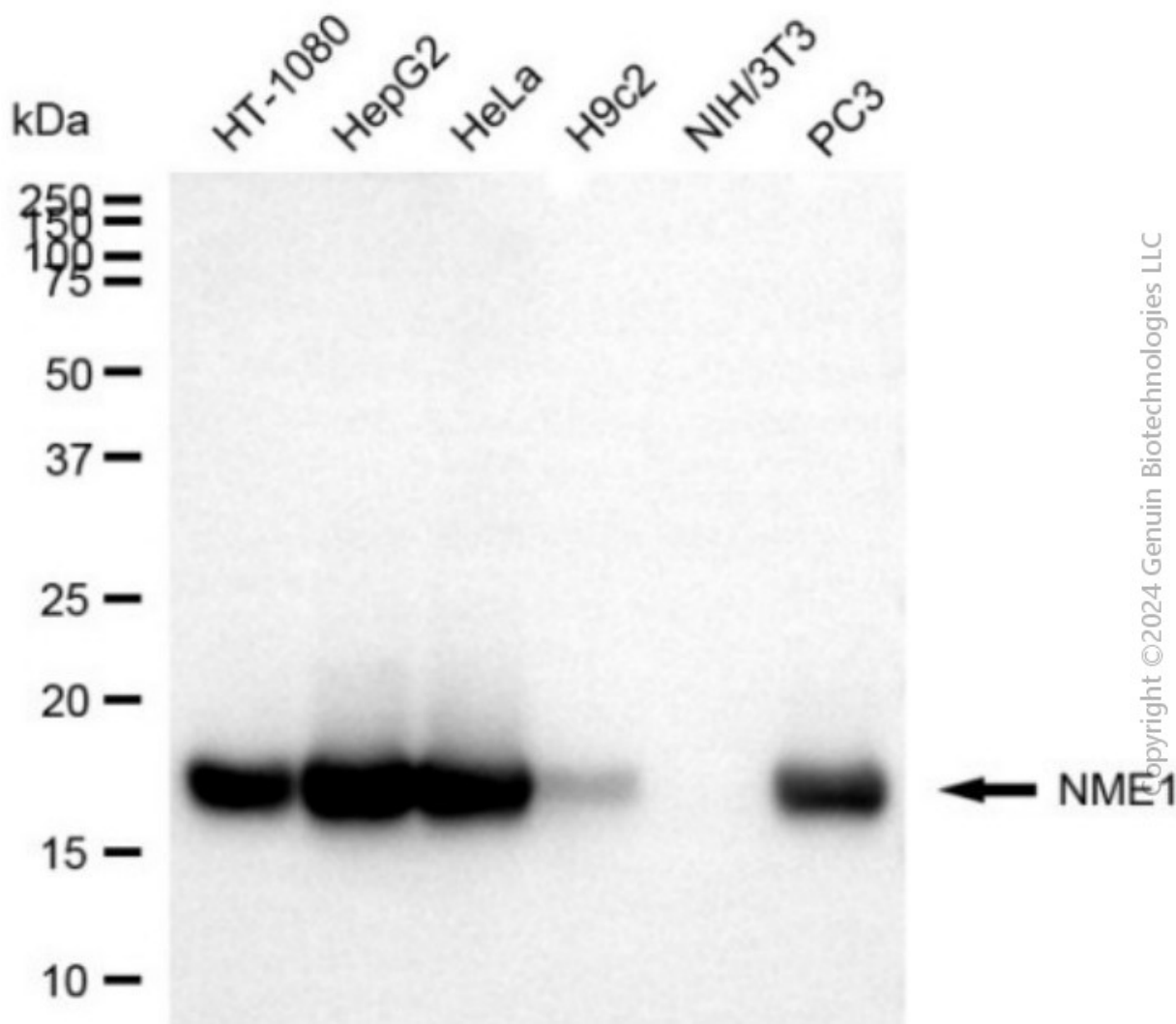
ORDERS

SALES@GENUINBIOTECH.COM
FAX: +1-540-855-7041

WWW.GENUINBIOTECH.COM



Immunocytochemical staining of HepG2 cells with anti-NME1 antibody (Cat#4617, 1:1,000). Nuclei were stained blue with DAPI; NME1 was stained magenta with Alexa Fluor® 647. Images were taken using Leica stellaris 5. Protein abundance based on laser Intensity and smart gain: Low. Scale bar, 20 μ m.



Western blotting analysis using anti-NME1 antibody (Cat#4617). Total cell lysates (30 μ g) from various cell lines were loaded and separated by SDS-PAGE. The blot was incubated with anti-NME1 antibody (Cat#4617, 1:5,000) and HRP-conjugated goat anti-rabbit secondary antibody (Cat#201, 1:20,000) respectively. Image was developed using NaQ™ ECL Substrate Kit (Cat#716).