

Anti-CD105 Recombinant Rabbit Monoclonal Antibody



Catalog #: 4618

Aliases

ENG; Endoglin; END; HHT1; CD105 Antigen; CD105; ORW1; Osler-Rendu-Weber Syndrome 1; Soluble Endoglin; ORW

Background

Gene Name: ENG

NCBI Gene Entry: [2022](#)

UniProt Entry: [P17813](#)

Application Information

Molecular Weight: Predicted, 71 kDa; observed, 90 kDa

Clonality: Rabbit monoclonal antibody

Clone ID: 24GB12100

Species Reactivity: Human

Applications Tested: Western blotting (WB), immunocytochemistry (IC)

Immunogen

A synthesized peptide derived from human CD105

Isotype

Rabbit IgG

Storage Buffer

Supplied in PBS (pH 7.4) containing 50% glycerol, and 0.02% sodium azide.

Storage

Store at -20 °C for one year.

Recommended Dilutions

Western Blotting (WB): 1:500-1:2,500

Immunocytochemistry (IC): 1:100-1:1,000

Note: This product is for research use only.

Validation Data

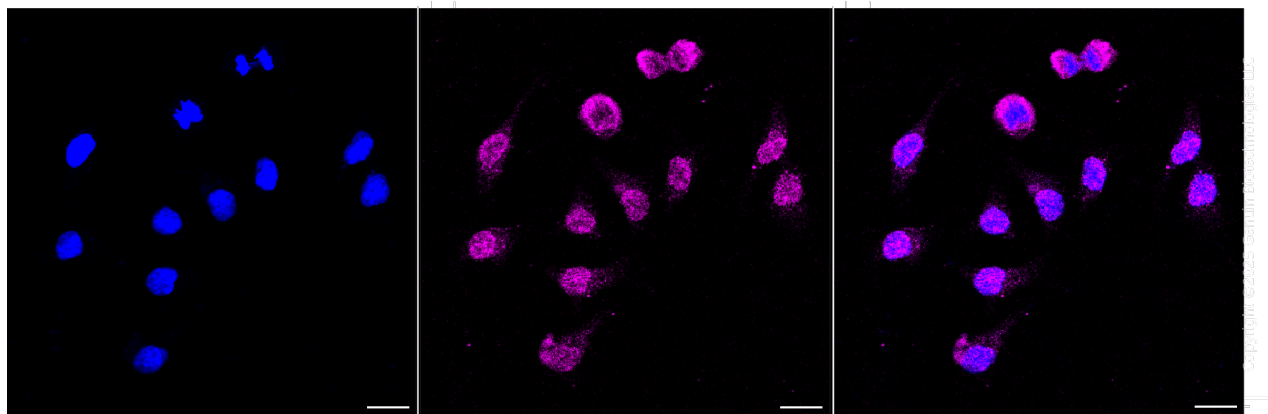
SUPPORT

SUPPORT@GENUINBIOTECH.COM
TEL: +1-540-855-7041

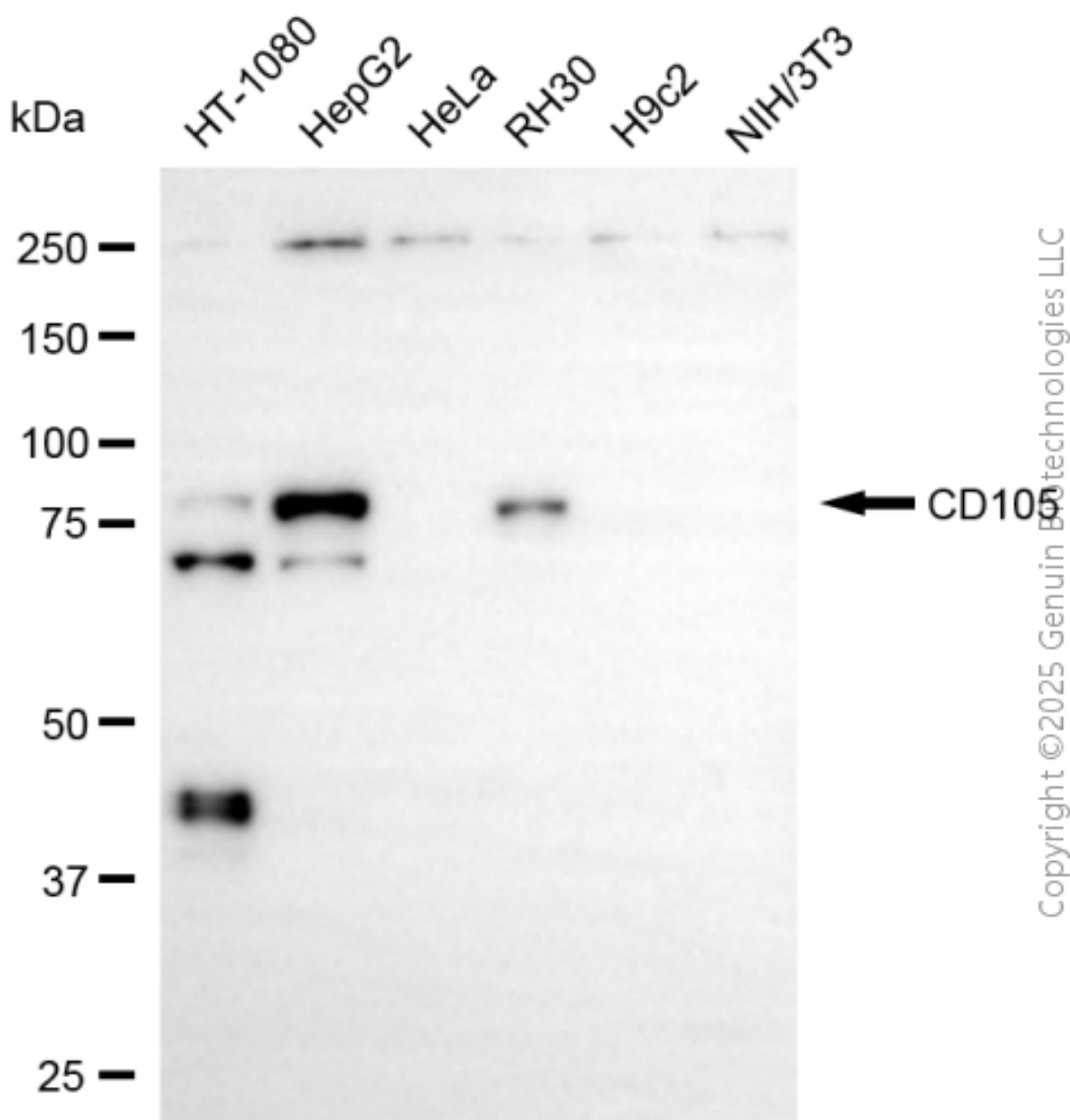
ORDERS

SALES@GENUINBIOTECH.COM
FAX: +1-540-855-7041

WWW.GENUINBIOTECH.COM



Immunocytochemical staining of HeLa cells with anti-CD105 antibody (Cat#4618,1:1,000) . Nuclei were stained blue with DAPI; CD105 was stained magenta with Alexa Fluor® 647. Images were taken using Leica stellaris 5. Protein abundance based on laser Intensity and smart gain: Low. Scale bar, 20 μ m.



Western blotting analysis using anti-CD105 antibody (Cat#4618). Total cell lysates (30 µg) from various cell lines were loaded and separated by SDS-PAGE. The blot was incubated with anti-CD105 antibody (Cat#4618, 1:2,500) and HRP-conjugated goat anti-rabbit secondary antibody (Cat#201, 1:20,000) respectively. Image was developed using NaQ™ ECL Substrate Kit (Cat#716).