

Anti-Cytoplasmic linker associated protein 1 Recombinant Rabbit Monoclonal Antibody



Catalog #: 4621

Aliases

CLASP1; Cytoplasmic Linker Associated Protein 1; MAST1; CLIP-Associating Protein 1; KIAA0622; Multiple Asters Homolog 1; Protein Orbit Homolog 1; Multiple Asters 1; Cytoplasmic Linker-Associated Protein 1; HOrbit1

Background

Gene Name: CLASP1

NCBI Gene Entry: [23332](#)

UniProt Entry: [Q7Z460](#)

Application Information

Molecular Weight: Predicted, 169 kDa; observed, 169 kDa

Clonality: Rabbit monoclonal antibody

Clone ID: 24GB12115

Species Reactivity: Human, mouse, rat

Applications Tested: Western blotting (WB), flow cytometry (FCM), immunocytochemistry (IC)

Immunogen

A synthesized peptide derived from human CLASP1

Isotype

Rabbit IgG

Storage Buffer

Supplied in PBS (pH 7.4) containing 50% glycerol, and 0.02% sodium azide.

Storage

Store at -20 °C for one year.

Recommended Dilutions

Western Blotting (WB): 1:1,000-1:5,000

Flow Cytometry (FCM): 1:2,000

Immunocytochemistry (IC): 1:100-1:1,000

Note: This product is for research use only.

SUPPORT

SUPPORT@GENUINBIOTECH.COM
TEL: +1-540-855-7041

ORDERS

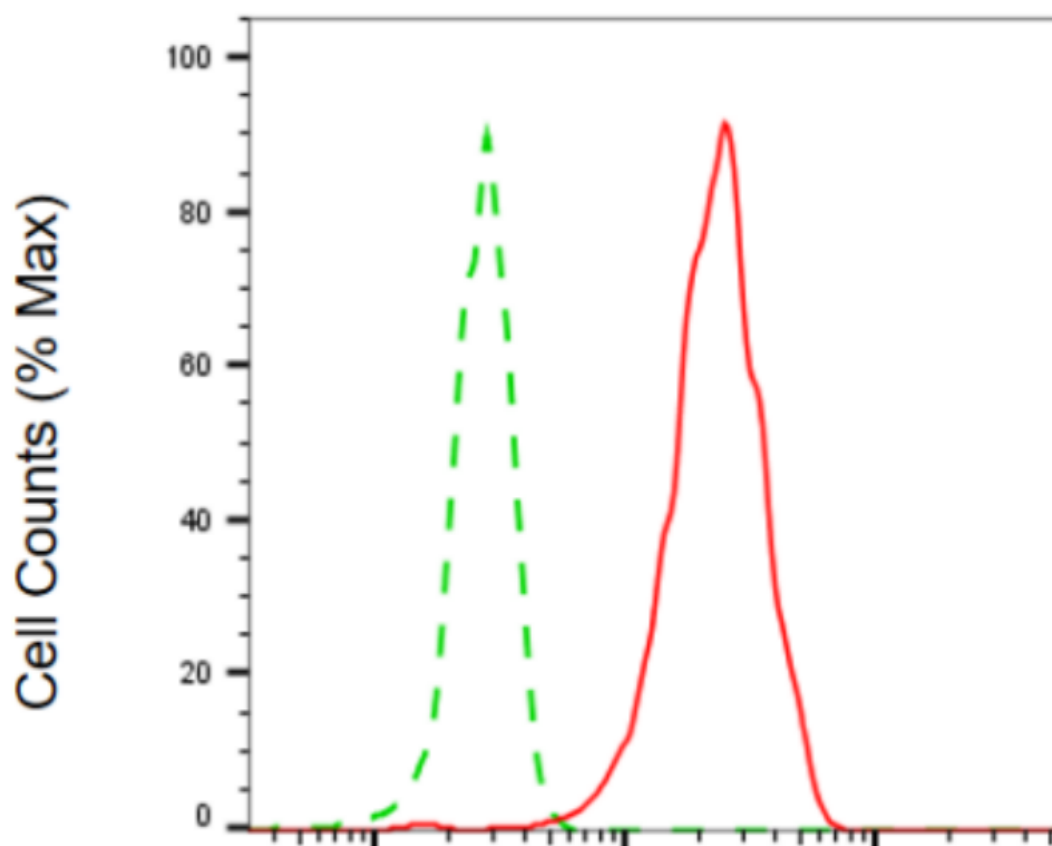
SALES@GENUINBIOTECH.COM
FAX: +1-540-855-7041

WWW.GENUINBIOTECH.COM

Anti-Cytoplasmic linker associated protein 1 Recombinant Rabbit Monoclonal Antibody

PAGE 2

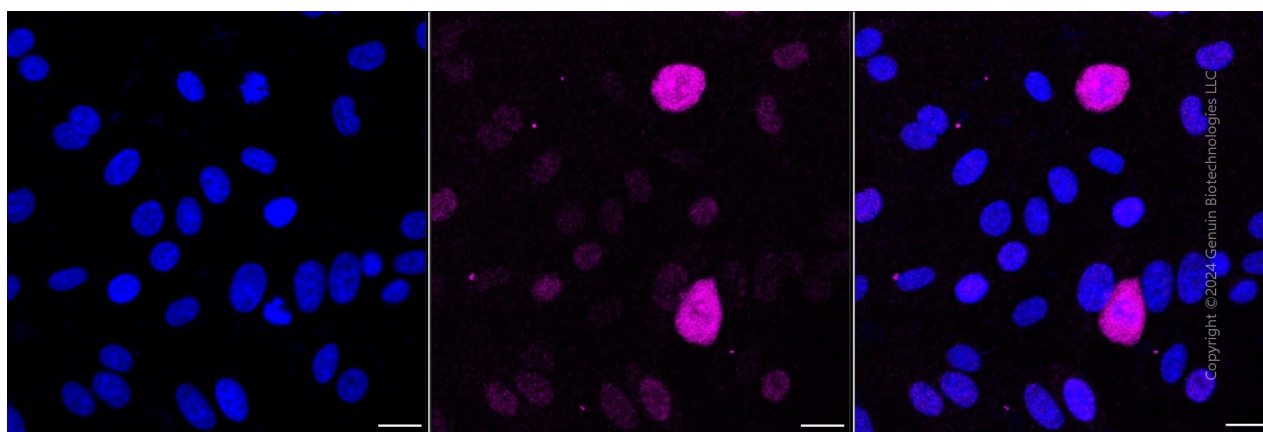
Validation Data



Copyright ©2024 Genuin Biotechnologies LLC

Cytoplasmic linker associated protein 1-Alexa Fluor® 647

Flow cytometric analysis of cytoplasmic linker associated protein 1 expression in HepG2 cells using anti-cytoplasmic linker associated protein 1 antibody (Cat#4621, 1:2,000). Green, isotype control; red, cytoplasmic linker associated protein 1.



Copyright ©2024 Genuin Biotechnologies LLC

SUPPORT

SUPPORT@GENUINBIOTECH.COM
TEL: +1-540-855-7041

ORDERS

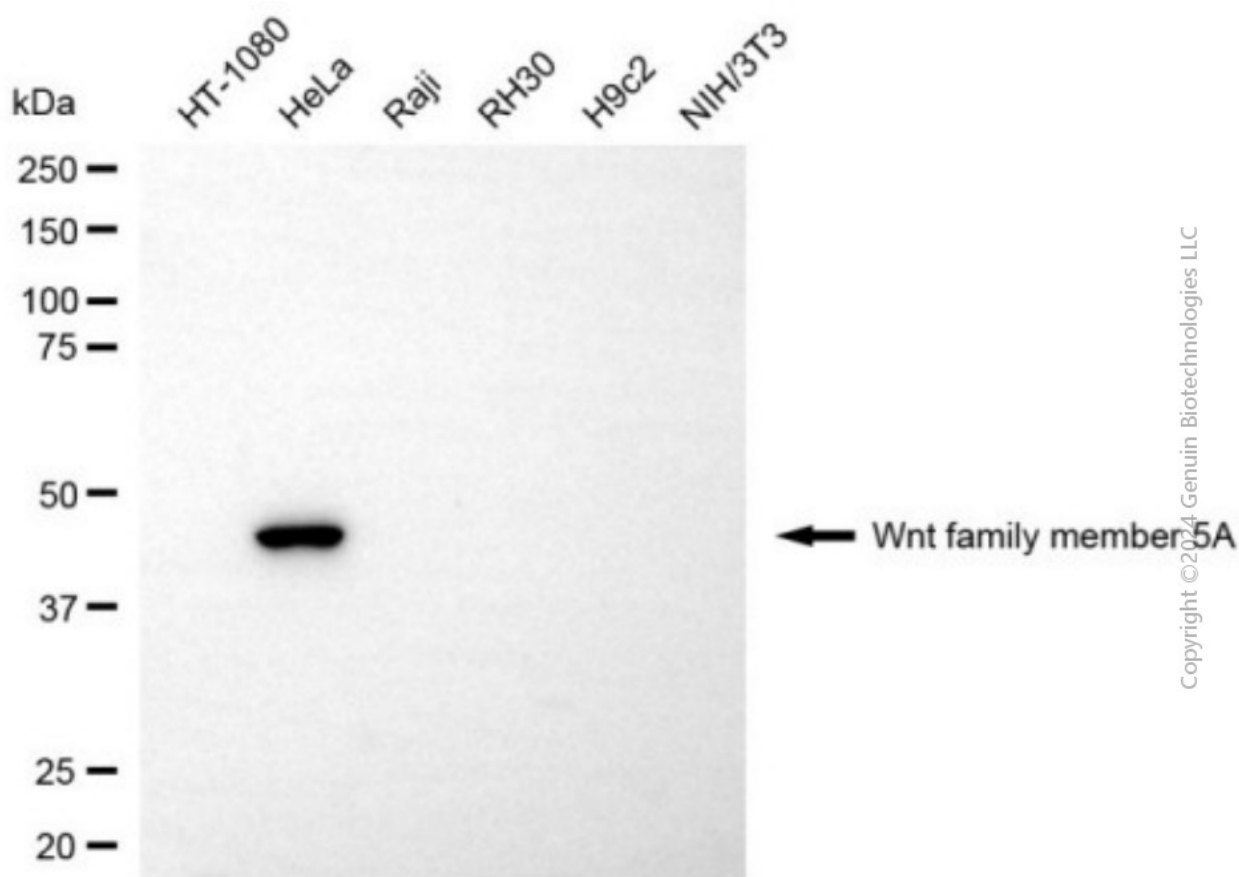
SALES@GENUINBIOTECH.COM
FAX: +1-540-855-7041

WWW.GENUINBIOTECH.COM

Anti-Cytoplasmic linker associated protein 1 Recombinant Rabbit Monoclonal Antibody

PAGE 3

Immunocytochemical staining of HepG2 cells with anti-Cytoplasmic linker associated protein 1 antibody (Cat#4621, 1:1,000). Nuclei were stained blue with DAPI; Cytoplasmic linker associated protein 1 was stained magenta with Alexa Fluor® 647. Images were taken using Leica stellaris 5. Protein abundance based on laser Intensity and smart gain: Medium. Scale bar, 20 µm.



Western blotting analysis using anti-cytoplasmic linker associated protein 1 antibody (Cat#4621). Total cell lysates (30 µg) from various cell lines were loaded and separated by SDS-PAGE. The blot was incubated with anti-cytoplasmic linker associated protein 1 antibody (Cat#4621, 1:5,000) and HRP-conjugated goat anti-rabbit secondary antibody (Cat#201, 1:20,000) respectively. Image was developed using NaQ™ ECL Substrate Kit (Cat#716).

SUPPORT

SUPPORT@GENUINBIOTECH.COM
TEL: +1-540-855-7041

ORDERS

SALES@GENUINBIOTECH.COM
FAX: +1-540-855-7041

WWW.GENUINBIOTECH.COM