

# Anti-NR2C2 Rabbit Recombinant Rabbit Monoclonal Antibody



**Catalog #: 4627**

## Aliases

Nuclear Receptor Subfamily 2 Group C Member 2; TAK1; TR4; Orphan Nuclear Receptor TAK1; Orphan Nuclear Receptor TR4; TR2R1; HTAK1; Nuclear Receptor Subfamily 2, Group C, Member 2; Testicular Nuclear Receptor 4; Nuclear Hormone Receptor TR4; Testicular Receptor 4; Orphan Receptor TR4

## Background

Gene Name: NR2C2

NCBI Gene Entry: [7182](#)

UniProt Entry: [P49116](#)

## Application Information

Molecular Weight: Predicted, 65 kDa; observed, 65 kDa

Clonality: Rabbit monoclonal antibody

Clone ID: 24GB12145

Species Reactivity: Human, mouse, rat

Applications Tested: Western blotting (WB), flow cytometry (FCM), immunocytochemistry (IC)

## Immunogen

A synthesized peptide derived from human NR2C2 / TR4

## Isotype

Rabbit IgG

## Storage Buffer

Supplied in PBS (pH 7.4) containing 50% glycerol, and 0.02% sodium azide.

## Storage

Store at -20 °C for one year.

## Recommended Dilutions

Western Blotting (WB): 1:1,000-1:5,000

Flow Cytometry (FCM): 1:2,000

Immunocytochemistry (IC): 1:100-1:1,000

---

### SUPPORT

SUPPORT@GENUINBIOTECH.COM  
TEL: +1-540-855-7041

### ORDERS

SALES@GENUINBIOTECH.COM  
FAX: +1-540-855-7041

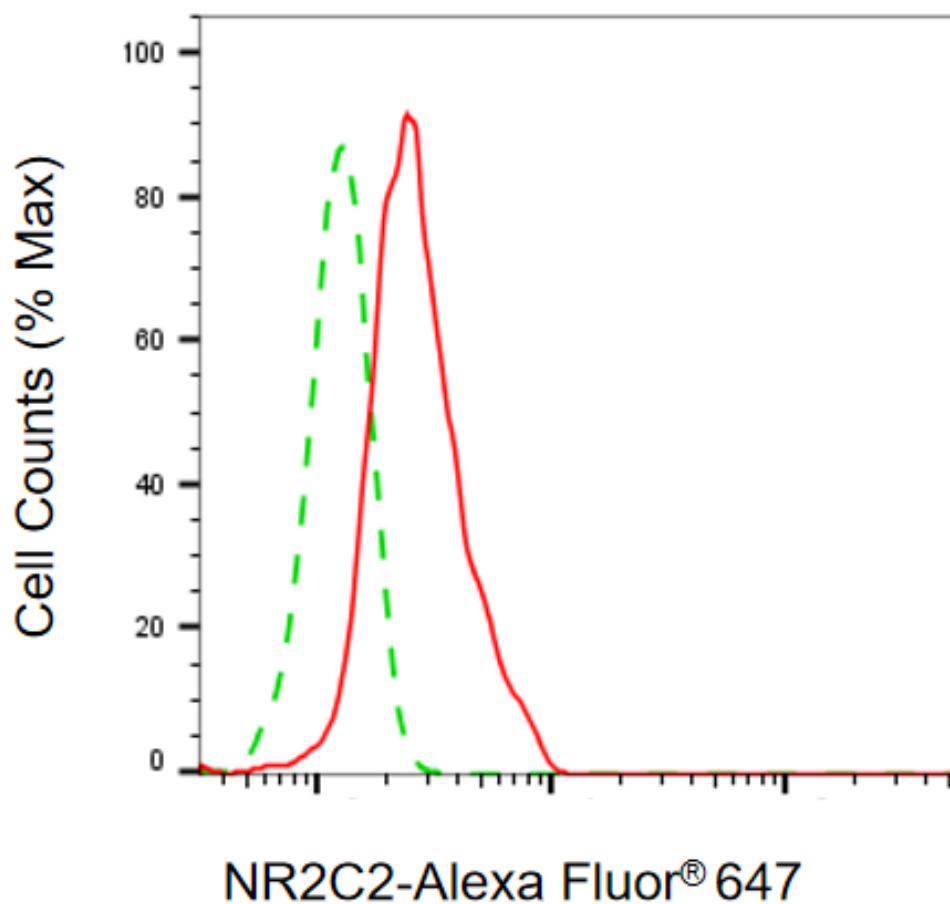
[WWW.GENUINBIOTECH.COM](http://WWW.GENUINBIOTECH.COM)

# Anti-NR2C2 Rabbit Recombinant Rabbit Monoclonal Antibody

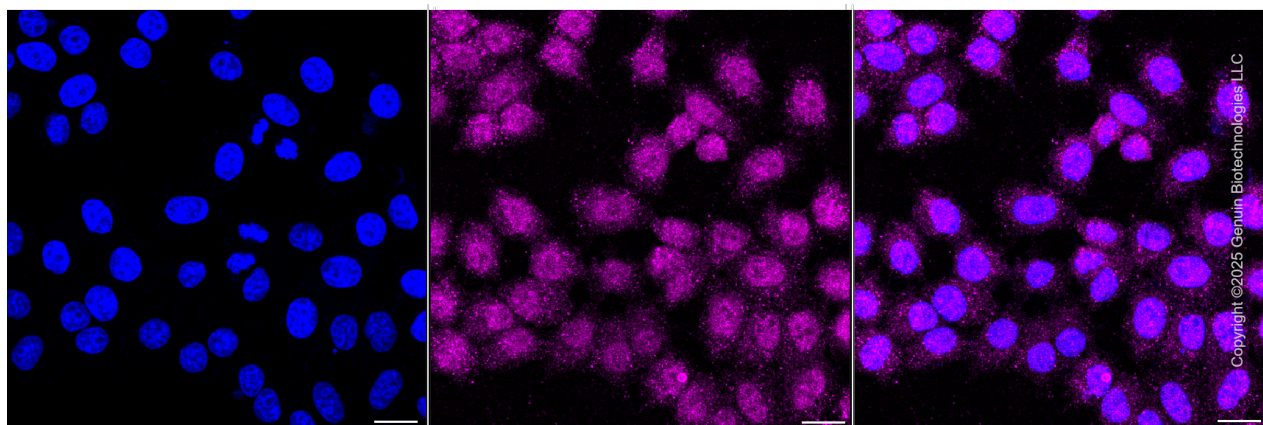
PAGE 2

**Note:** This product is for research use only.

## Validation Data



Flow cytometric analysis of NR2C2 expression in HepG2 cells using anti-NR2C2 antibody (Cat#4627, 1:2,000). Green, isotype control; red, NR2C2.



### SUPPORT

SUPPORT@GENUINBIOTECH.COM  
TEL: +1-540-855-7041

### ORDERS

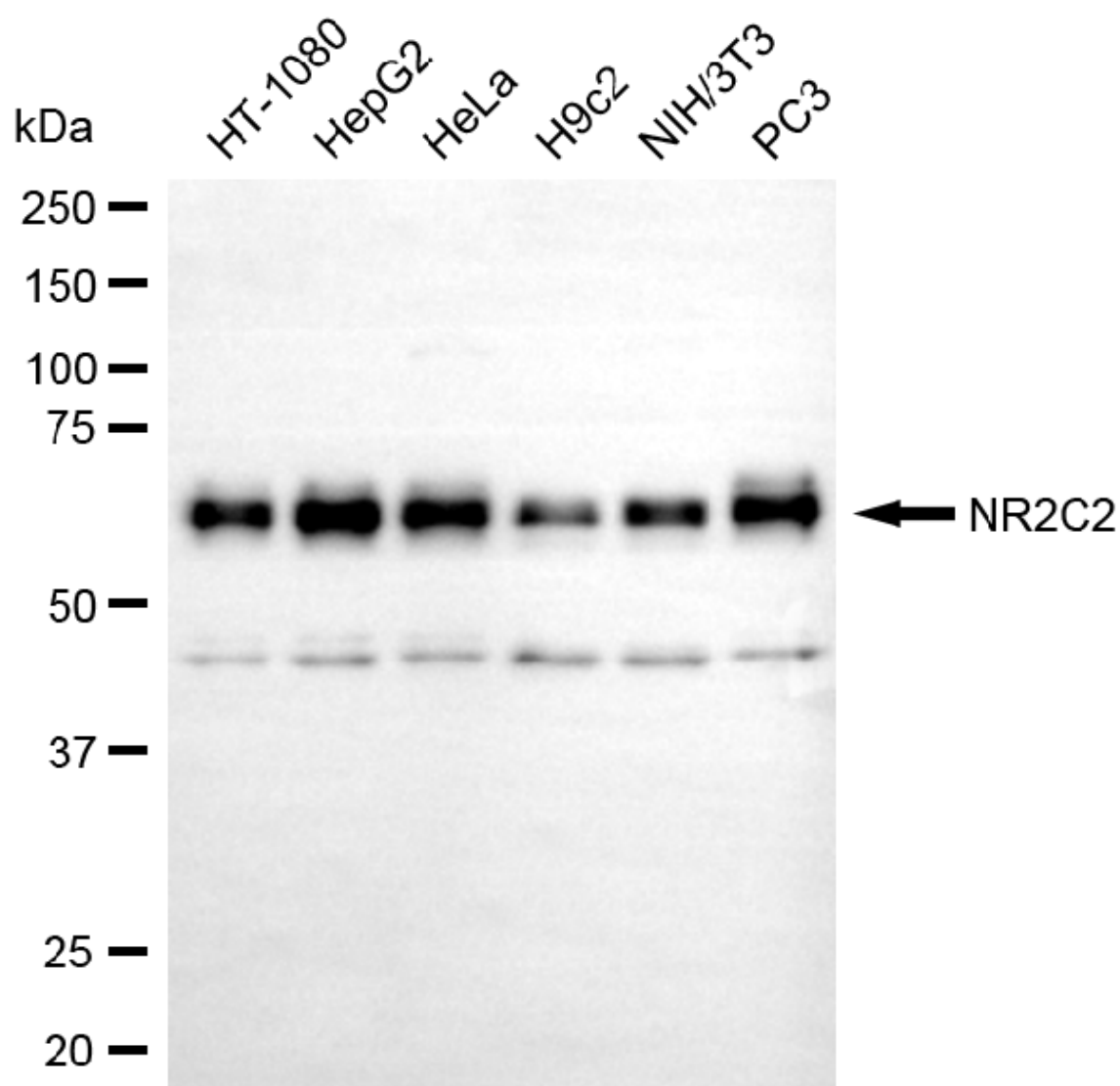
SALES@GENUINBIOTECH.COM  
FAX: +1-540-855-7041

WWW.GENUINBIOTECH.COM

## Anti-NR2C2 Rabbit Recombinant Rabbit Monoclonal Antibody

PAGE 3

Immunocytochemical staining of HepG2 cells with anti-NR2C2 antibody (Cat#4627, 1:1,000) . Nuclei were stained blue with DAPI; NR2C2 was stained magenta with Alexa Fluor® 647. Images were taken using Leica stellaris 5. Protein abundance based on laser Intensity and smart gain: Medium. Scale bar, 20 µm.



Copyright ©2025 Genuin Biotechnologies LLC

Western blotting analysis using anti-NR2C2 antibody (Cat#4627). Total cell lysates (30 µg) from various cell lines were loaded and separated by SDS-PAGE. The blot was incubated with anti-NR2C2 antibody (Cat#4627, 1:5,000) and HRP-conjugated goat anti-rabbit secondary antibody (Cat#201, 1:20,000) respectively. Image was developed using FeQ™ ECL Substrate Kit (Cat#226).

### SUPPORT

SUPPORT@GENUINBIOTECH.COM  
TEL: +1-540-855-7041

### ORDERS

SALES@GENUINBIOTECH.COM  
FAX: +1-540-855-7041

WWW.GENUINBIOTECH.COM