

# Anti-Phospho-PKR (T451) Recombinant Rabbit Monoclonal Antibody



**Catalog #: 4632**

## Aliases

EIF2AK2; Eukaryotic Translation Initiation Factor 2 Alpha Kinase 2; PKR; Protein Kinase R; PPP1R83; PRKR; Protein Kinase, Interferon-Inducible Double Stranded RNA Dependent; Interferon-Induced, Double-Stranded RNA-Activated Protein Kinase; Protein Phosphatase 1, Regulatory Subunit 83; Tyrosine-Protein Kinase EIF2AK2; Protein Kinase RNA-Activated; Protein Kinase RNA-Regulated; P1/EIF-2A Protein Kinase; EIF-2A Protein Kinase 2; P68 Kinase; Eukaryotic Translation Initiation Factor 2-Alpha Kinase 2; Interferon-Inducible RNA-Dependent Protein Kinase; Double Stranded RNA Activated Protein Kinase; Interferon-Inducible EIF2alpha Kinase; EC 2.7.11.1; EC 2.7.10.2; EIF2AK1; LEUDEN; DYT33

## Background

Gene Name: EIF2AK2

NCBI Gene Entry: [5610](#)

UniProt Entry: [P19525](#)

## Application Information

Molecular Weight: Predicted, 62 kDa; observed, 68 kDa

Clonality: Rabbit monoclonal antibody

Clone ID: 24GB12170

Species Reactivity: Human

Applications Tested: Western blotting (WB), immunocytochemistry (IC), flow cytometry (FCM)

## Immunogen

A synthesized peptide derived from human eIF2A K2 around the phosphorylation site of T451

## Isotype

Rabbit IgG

## Storage Buffer

Supplied in PBS (pH 7.4) containing 50% glycerol, and 0.02% sodium azide.

## Storage

Store at -20 °C for one year.

## Recommended Dilutions

Western Blotting (WB): 1:1,000-1:5,000

---

### SUPPORT

SUPPORT@GENUINBIOTECH.COM  
TEL: +1-540-855-7041

### ORDERS

SALES@GENUINBIOTECH.COM  
FAX: +1-540-855-7041

[WWW.GENUINBIOTECH.COM](http://WWW.GENUINBIOTECH.COM)

# Anti-Phospho-PKR (T451) Recombinant Rabbit Monoclonal Antibody

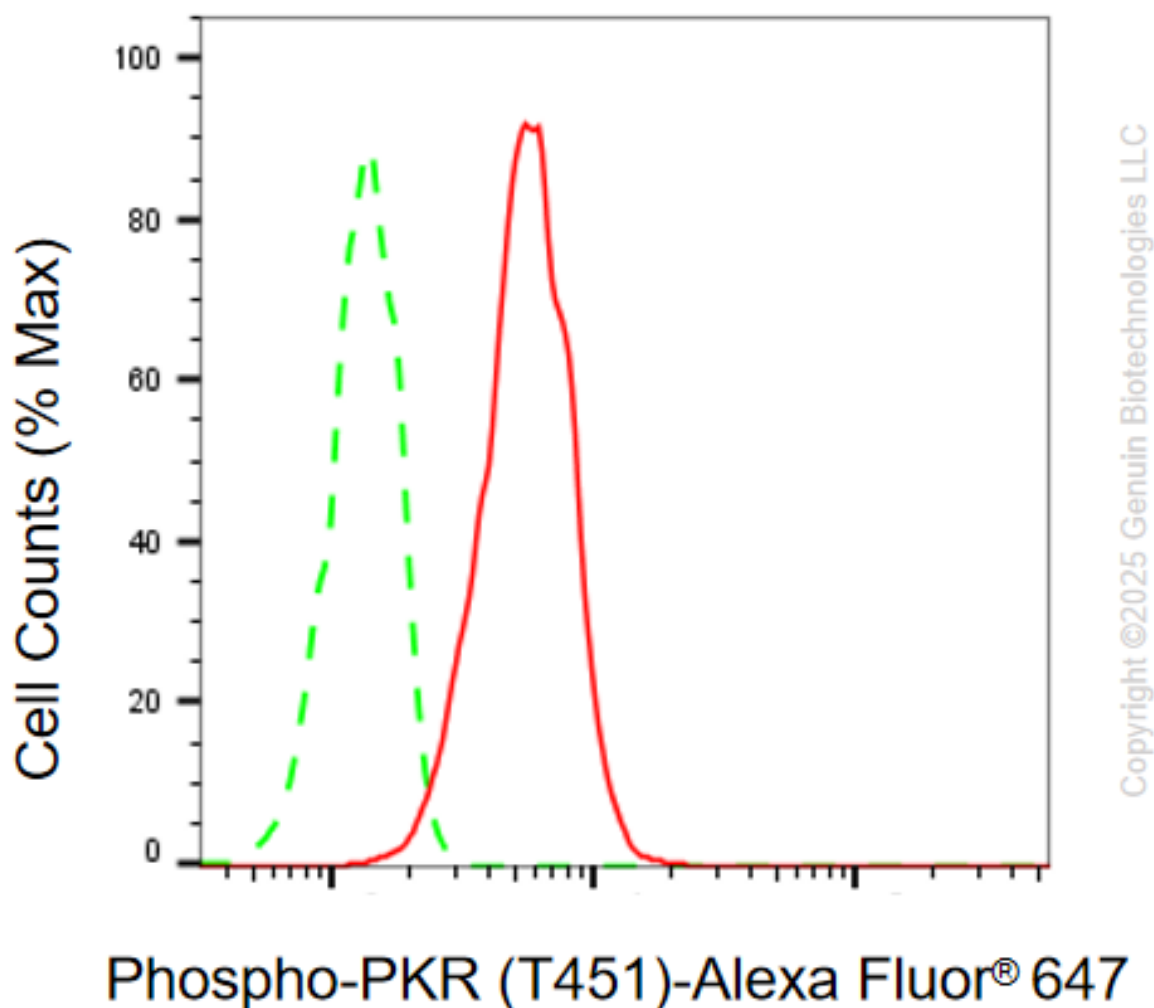
PAGE 2

Immunocytochemistry (IC): 1:100-1:1,000

Flow Cytometry (FCM): 1:2,000

**Note:** This product is for research use only.

## Validation Data



Flow cytometric analysis of Phospho-Phospho-PKR (T451) expression in HT-1080 cells using anti-Phospho-Phospho-PKR (T451) antibody (Cat#4632, 1:2,000). Green, isotype control; red, Phospho-Phospho-PKR (T451).

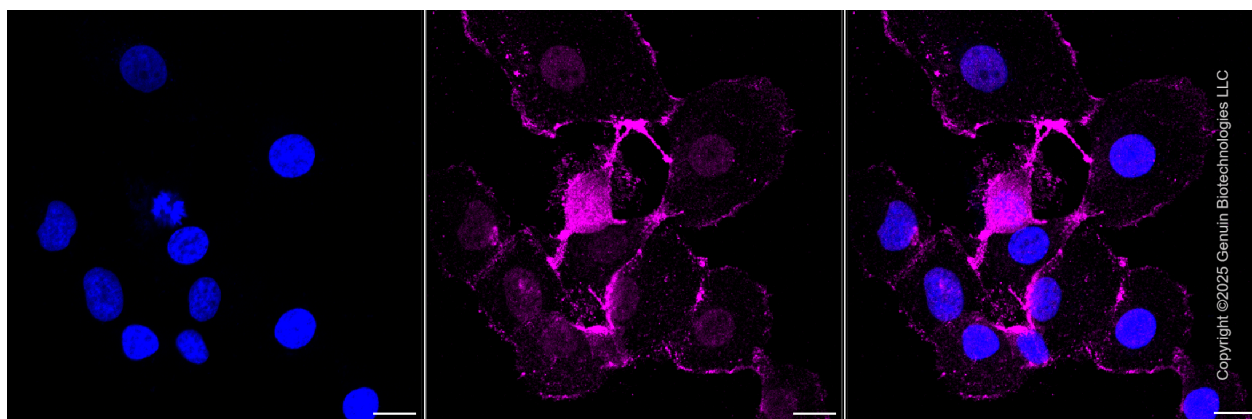
### SUPPORT

SUPPORT@GENUINBIOTECH.COM  
TEL: +1-540-855-7041

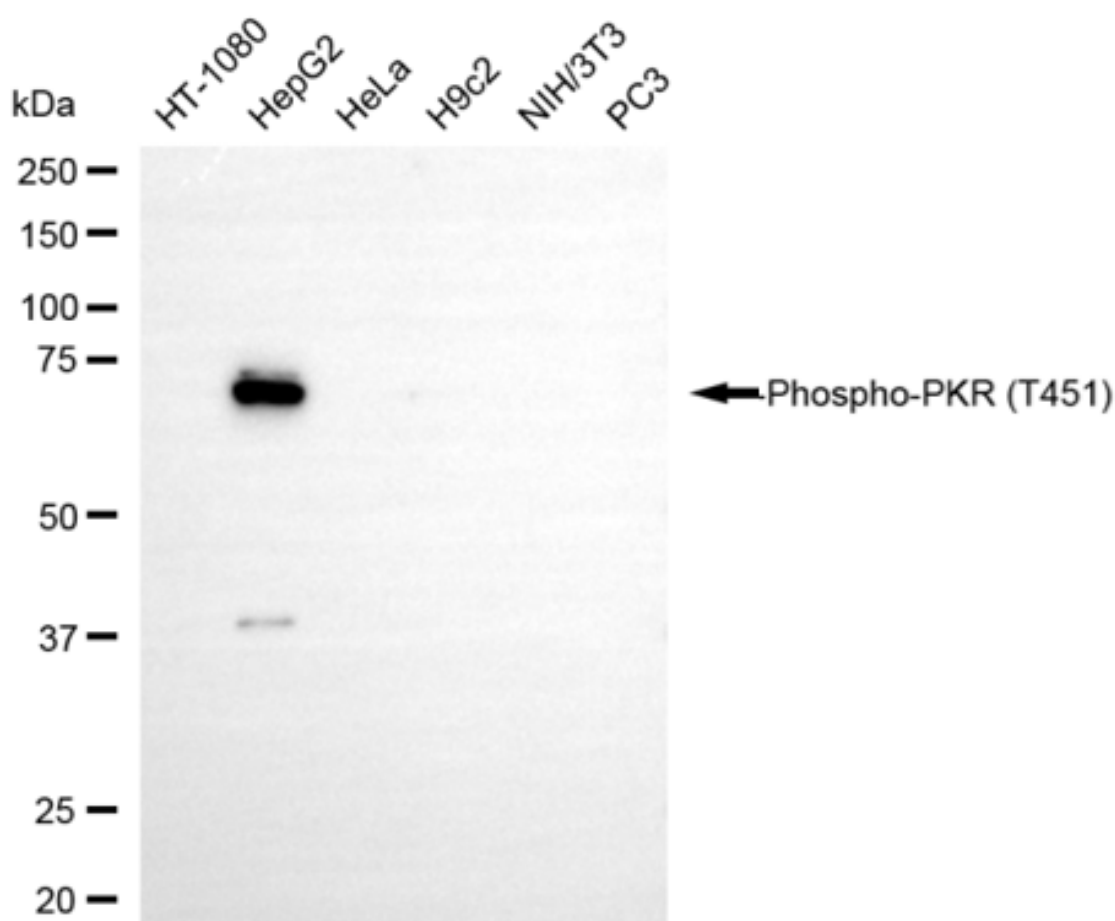
### ORDERS

SALES@GENUINBIOTECH.COM  
FAX: +1-540-855-7041

WWW.GENUINBIOTECH.COM



Immunocytochemical staining of HT-1080 cells with anti-Phospho-Phospho-PKR (T451) antibody (Cat#4632, 1:1,000) . Nuclei were stained blue with DAPI;Phospho-Phospho-PKR (T451) was stained magenta with Alexa Fluor® 647. Images were taken using Leica stellaris 5. Protein abundance based on laser Intensity and smart gain: Medium. Scale bar, 20  $\mu$ m.



Western blotting analysis using anti-phospho-phospho PKR(T451) antibody (Cat#4632). Total cell lysates (30  $\mu$ g) from various cell lines were loaded and separated by SDS-PAGE. The blot was incubated with anti-phospho-phospho PKR(T451) antibody (Cat#4632, 1:5,000) and HRP-

## SUPPORT

SUPPORT@GENUINBIOTECH.COM  
TEL: +1-540-855-7041

## ORDERS

SALES@GENUINBIOTECH.COM  
FAX: +1-540-855-7041

[WWW.GENUINBIOTECH.COM](http://WWW.GENUINBIOTECH.COM)

## **Anti-Phospho-PKR (T451) Recombinant Rabbit Monoclonal Antibody**

PAGE 4

conjugated goat anti-rabbit secondary antibody (Cat#201, 1:20,000) respectively. Image was developed using NaQ™ ECL Substrate Kit (Cat#716).

---

### **SUPPORT**

SUPPORT@GENUINBIOTECH.COM  
TEL: +1-540-855-7041

### **ORDERS**

SALES@GENUINBIOTECH.COM  
FAX: +1-540-855-7041

**WWW.GENUINBIOTECH.COM**