

Anti-G protein subunit beta 2 Recombinant Rabbit Monoclonal Antibody



Catalog #: 4634

Aliases

GNB2; Transducin Beta Chain 2; Signal-Transducing Guanine Nucleotide-Binding Regulatory Protein Beta Subunit 2; Guanine Nucleotide Binding Protein (G Protein), Beta Polypeptide 2; Guanine Nucleotide-Binding Protein G(I)/G(S)/G(T) Beta Subunit 2; Guanine Nucleotide-Binding Protein G(I)/G(S)/G(T) Subunit Beta-2; G Protein, Beta-2 Subunit; G Protein Subunit Beta-2; Heterotrimeric Guanine Nucleotide-Binding Protein 2C1; Epididymis Secretory Sperm Binding Protein; SSS4; NEDHYDF; HG2C1;SSS4

Background

Gene Name: GNB2

NCBI Gene Entry: [2783](#)

UniProt Entry: [P62879](#)

Application Information

Molecular Weight: Predicted, 37 kDa; observed, 35 kDa

Clonality: Rabbit monoclonal antibody

Clone ID: 24GB12180

Species Reactivity: Human, mouse, rat

Applications Tested: Western blotting (WB), flow cytometry (FCM), immunocytochemistry (IC)

Immunogen

A synthesized peptide derived from human GNB2

Isotype

Rabbit IgG

Storage Buffer

Supplied in PBS (pH 7.4) containing 50% glycerol, and 0.02% sodium azide.

Storage

Store at -20 °C for one year.

Recommended Dilutions

Western Blotting (WB): 1:1,000-1:5,000

Flow Cytometry (FCM): 1:2,000

Immunocytochemistry (IC): 1:100-1:1,000

SUPPORT

SUPPORT@GENUINBIOTECH.COM
TEL: +1-540-855-7041

ORDERS

SALES@GENUINBIOTECH.COM
FAX: +1-540-855-7041

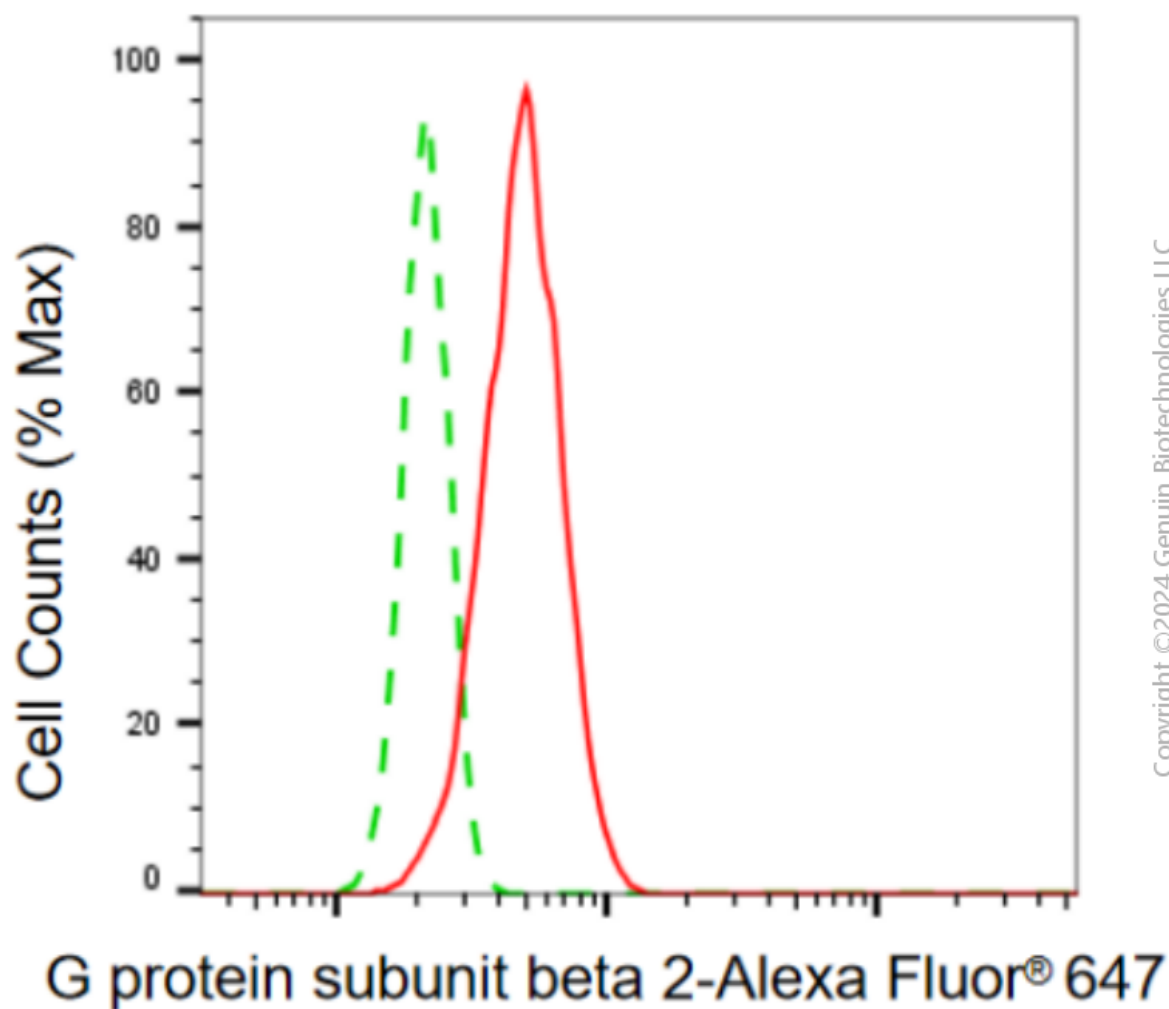
WWW.GENUINBIOTECH.COM

Anti-G protein subunit beta 2 Recombinant Rabbit Monoclonal Antibody

PAGE 2

Note: This product is for research use only.

Validation Data



Flow cytometric analysis of G protein subunit beta 2 expression in HT-1080 cells using anti-G protein subunit beta 2 antibody (Cat#4634, 1:2,000). Green, isotype control; red, G protein subunit beta 2.

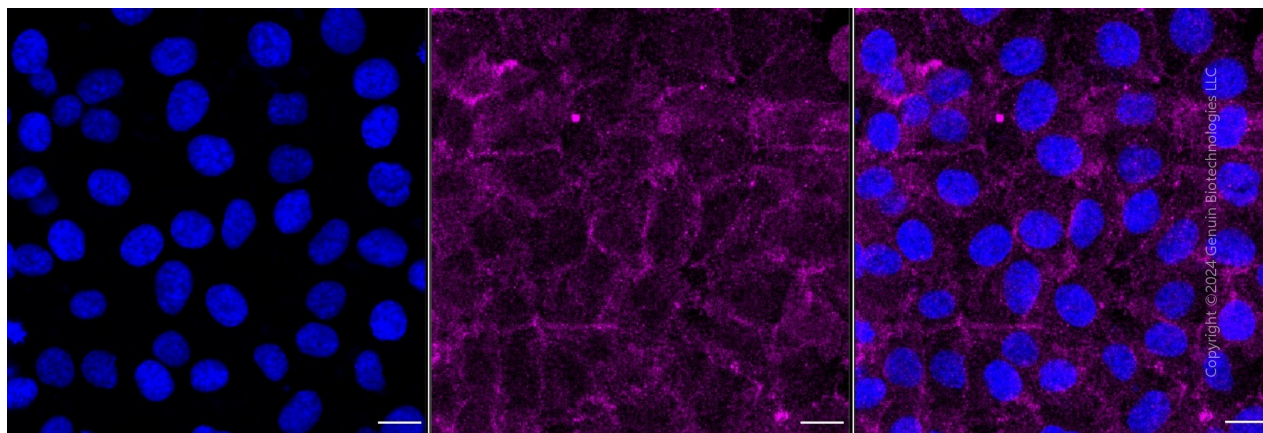
SUPPORT

SUPPORT@GENUINBIOTECH.COM
TEL: +1-540-855-7041

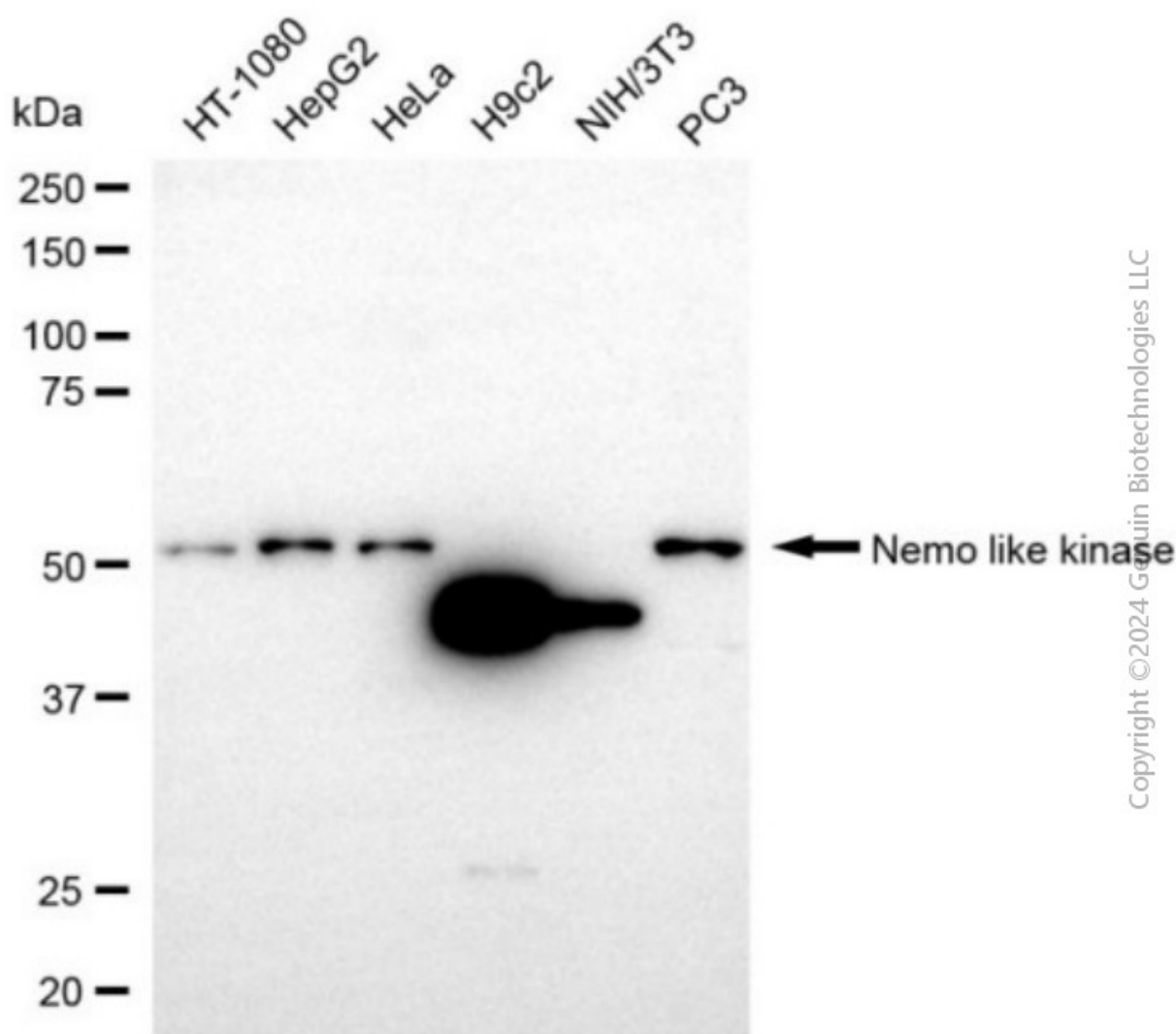
ORDERS

SALES@GENUINBIOTECH.COM
FAX: +1-540-855-7041

WWW.GENUINBIOTECH.COM



Immunocytochemical staining of HT-1080 cells with anti-G protein subunit beta 2 antibody (Cat#4634, 1:1,000). Nuclei were stained blue with DAPI; G protein subunit beta 2 was stained magenta with Alexa Fluor® 647. Images were taken using Leica stellaris 5. Protein abundance based on laser Intensity and smart gain: Medium. Scale bar, 20 μ m.



Western blotting analysis using anti-G protein subunit beta 2 antibody (Cat#4634). Total cell lysates (30 μ g) from various cell lines were loaded and separated by SDS-PAGE. The blot was incubated with anti-G protein subunit beta 2 antibody (Cat#4634, 1:5,000) and HRP-conjugated goat anti-rabbit secondary antibody (Cat#201, 1:20,000) respectively. Image was developed using NaQ™ ECL Substrate Kit (Cat#716).