

Anti-ISG15 Recombinant Rabbit Monoclonal Antibody



Catalog #: 4638

Aliases

ISG15; ISG15 Ubiquitin Like Modifier; UCRP; IFI15; G1P2; Interferon, Alpha-Inducible Protein (Clone IFI-15K); Ubiquitin Cross-Reactive Protein; Ubiquitin-Like Protein ISG15; HUCRP; IP17; Interferon-Induced 17-KDa/15-KDa Protein; Interferon-Stimulated Protein, 15 KDa; Interferon-Induced 15 KDa Protein; Interferon-Induced 17 KDa Protein; IMD38

Background

Gene Name: ISG15

NCBI Gene Entry: [9636](#)

UniProt Entry: [P05161](#)

Application Information

Molecular Weight: Predicted, 18 kDa; observed, 17 kDa

Clonality: Rabbit monoclonal antibody

Clone ID: 24GB12200

Species Reactivity: Human

Applications Tested: Western blotting (WB), immunocytochemistry (IC)

Immunogen

A synthesized peptide derived from human ISG15

Isotype

Rabbit IgG

Storage Buffer

Supplied in PBS (pH 7.4) containing 50% glycerol, and 0.02% sodium azide.

Storage

Store at -20 °C for one year.

Recommended Dilutions

Western Blotting (WB): 1:1,000-1:5,000

Immunocytochemistry (IC): 1:100-1:1,000

Note: This product is for research use only.

SUPPORT

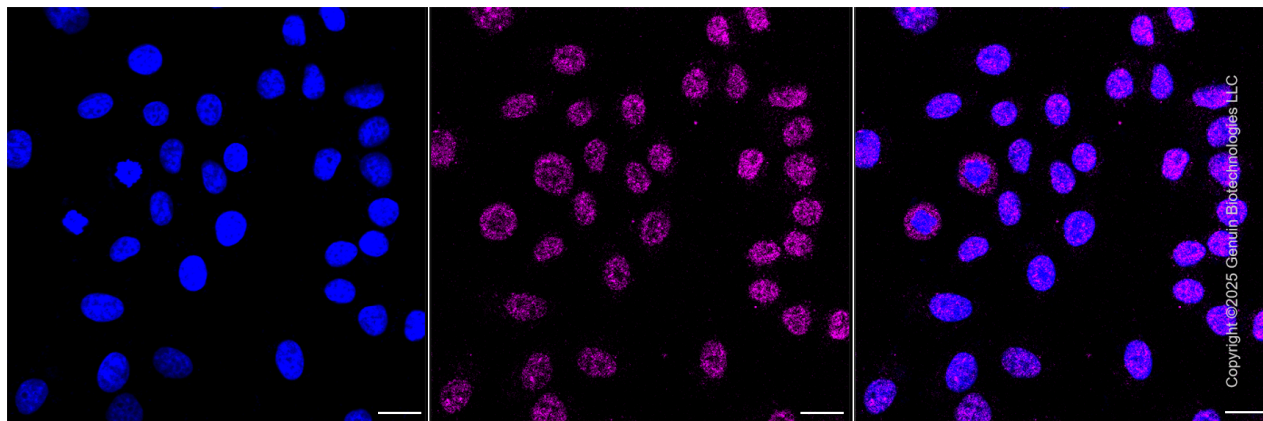
SUPPORT@GENUINBIOTECH.COM
TEL: +1-540-855-7041

ORDERS

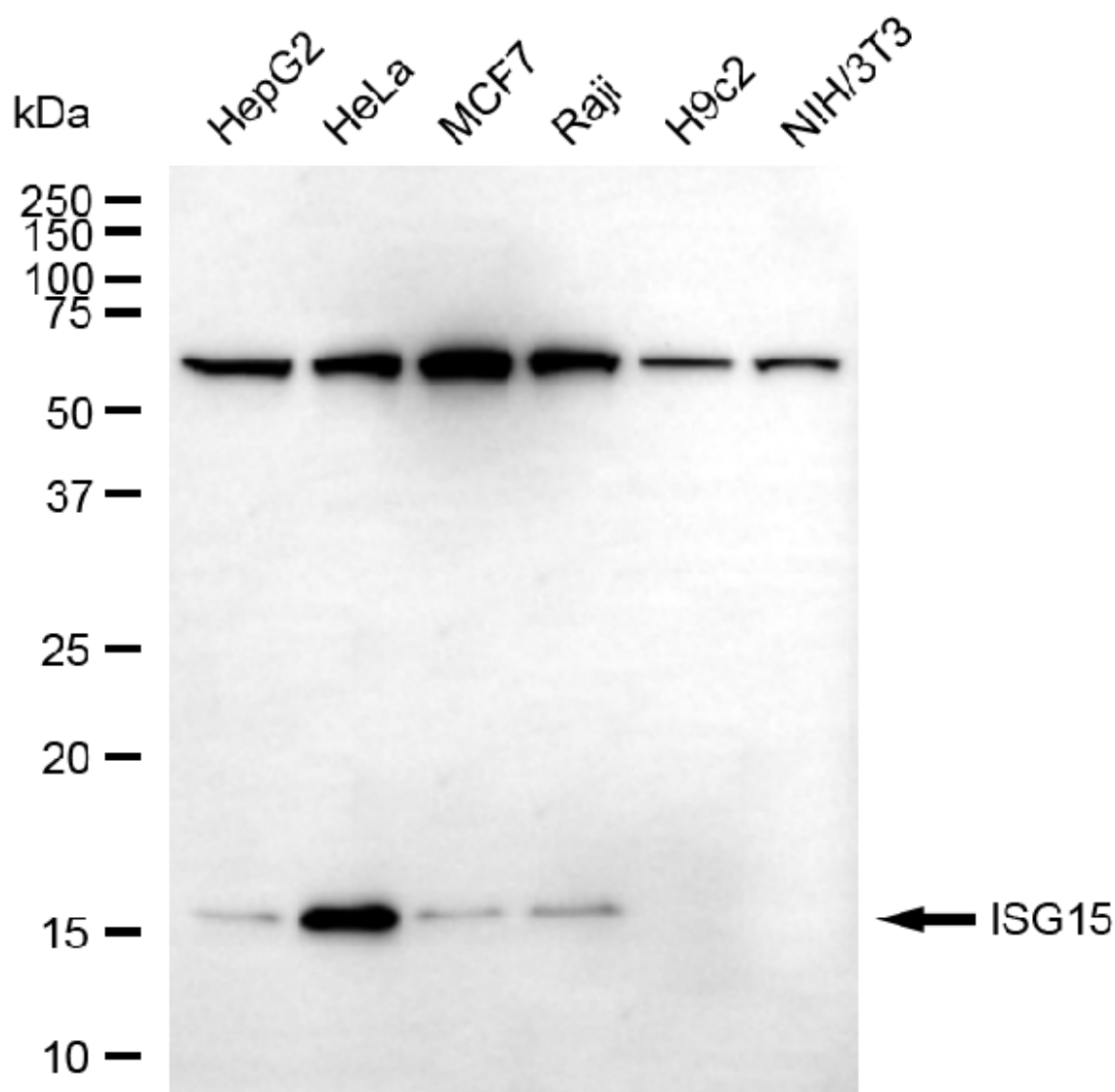
SALES@GENUINBIOTECH.COM
FAX: +1-540-855-7041

WWW.GENUINBIOTECH.COM

Validation Data



Immunocytochemical staining of HepG2 cells with anti-ISG15 antibody (Cat#4638, 1:1,000) . Nuclei were stained blue with DAPI; ISG15 was stained magenta with Alexa Fluor® 647. Images were taken using Leica stellaris 5. Protein abundance based on laser Intensity and smart gain: Low. Scale bar, 20 μ m.



Copyright ©2025 Genuin Biotechnologies LLC

Western blotting analysis using anti-ISG15 antibody (Cat#4638). Total cell lysates (30 µg) from various cell lines were loaded and separated by SDS-PAGE. The blot was incubated with anti-ISG15 antibody (Cat#4638, 1:5,000) and HRP-conjugated goat anti-rabbit secondary antibody (Cat#201, 1:20,000) respectively. Image was developed using FeQ™ ECL Substrate Kit (Cat#226).