

# Anti-Phospho-PLCB3 (S537) Recombinant Rabbit Monoclonal Antibody



**Catalog #: 4640**

## Aliases

PLCB3; Phospholipase C Beta 3; 1-Phosphatidylinositol 4,5-Bisphosphate Phosphodiesterase Beta-3; Phospholipase C, Beta 3 (Phosphatidylinositol-Specific); Phosphoinositide Phospholipase C-Beta-3; EC 3.1.4.11; Phospholipase C-Beta-3; PLC Beta 3; PLC-Beta-3; SMDCD

## Background

Gene Name: PLCB3

NCBI Gene Entry: [5331](#)

UniProt Entry: [Q01970](#)

## Application Information

Molecular Weight: Predicted, 139 kDa; observed, 150 kDa

Clonality: Rabbit monoclonal antibody

Clone ID: 24GB12210

Species Reactivity: Human, mouse, rat

Applications Tested: Western blotting (WB), immunocytochemistry (IC)

## Immunogen

A synthesized peptide derived from human PLCB3 around the phosphorylation site of S537

## Isotype

Rabbit IgG

## Storage Buffer

Supplied in PBS (pH 7.4) containing 50% glycerol, and 0.02% sodium azide.

## Storage

Store at -20 °C for one year.

## Recommended Dilutions

Western Blotting (WB): 1:1,000-1:5,000

Flow Cytometry (FCM): 1:2,000

Immunocytochemistry (IC): 1:200 - 1:1,000

**Note:** This product is for research use only.

---

### SUPPORT

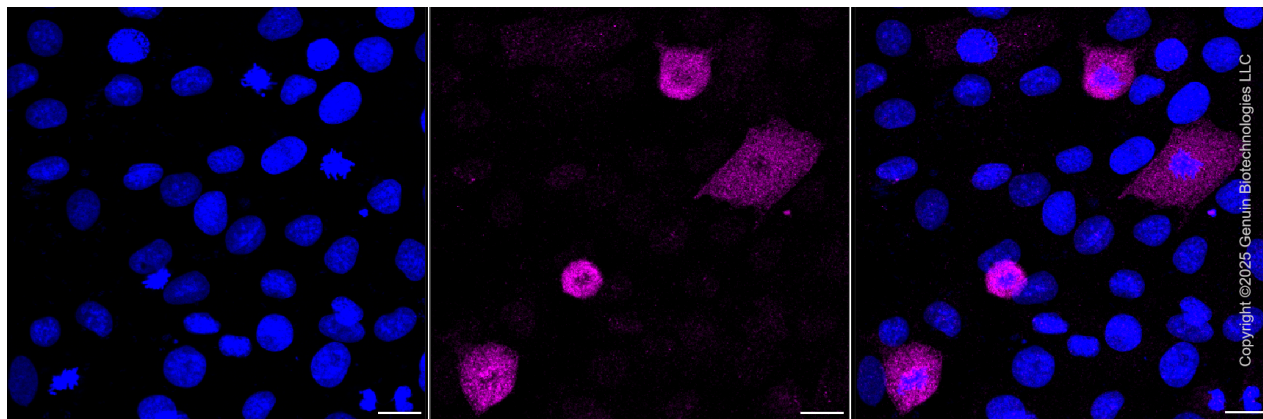
SUPPORT@GENUINBIOTECH.COM  
TEL: +1-540-855-7041

### ORDERS

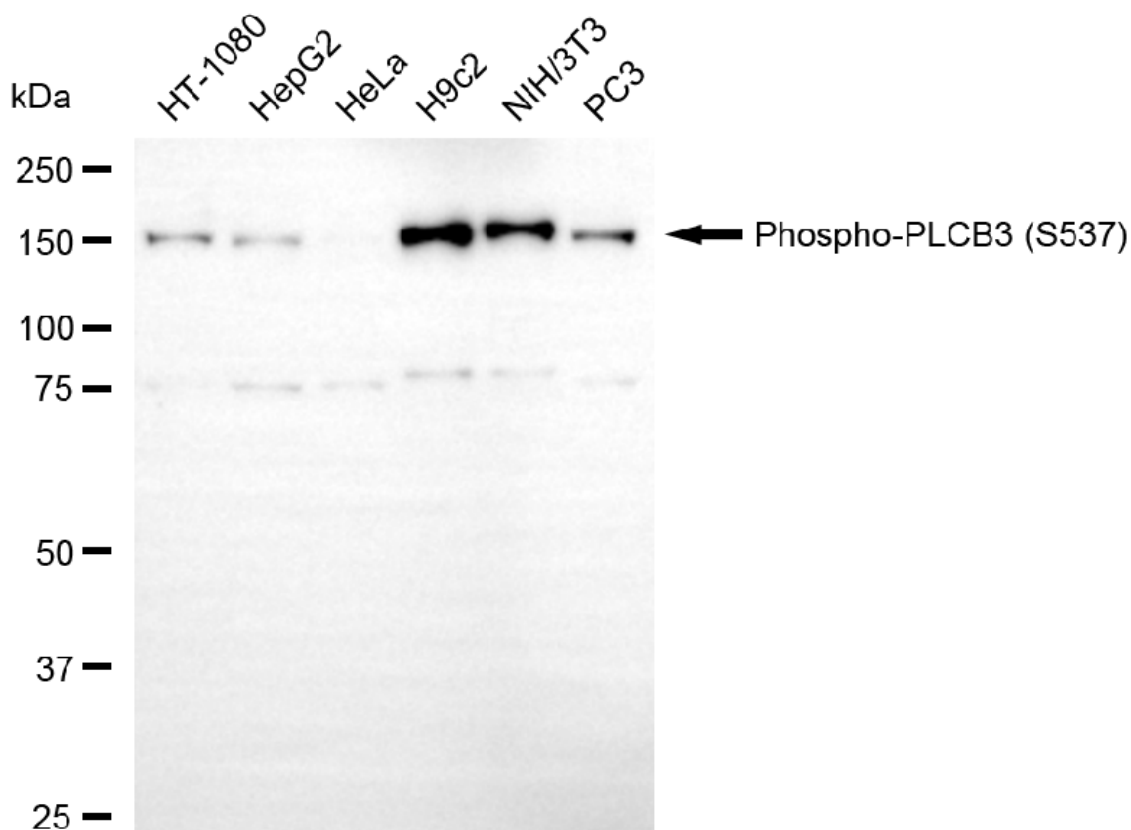
SALES@GENUINBIOTECH.COM  
FAX: +1-540-855-7041

[WWW.GENUINBIOTECH.COM](http://WWW.GENUINBIOTECH.COM)

## Validation Data



Immunocytochemical staining of H9c2 cells with anti-Phospho-PLCB3 (S537) antibody (Cat#4640, 1:1,000). Nuclei were stained blue with DAPI; Phospho-PLCB3 (S537) was stained magenta with Alexa Fluor® 647. Images were taken using Leica stellaris 5. Protein abundance based on laser Intensity and smart gain: Medium. Scale bar, 20  $\mu$ m.



Western blotting analysis using anti-phospho-PLCB3 (S537) antibody (Cat#4640). Total cell lysates (30  $\mu$ g) from various cell lines were loaded and separated by SDS-PAGE. The blot was incubated with anti-phospho-PLCB3 (S537) antibody (Cat#4640, 1:5,000) and HRP-conjugated goat anti-rabbit secondary antibody (Cat#201, 1:20,000) respectively. Image was developed using

### SUPPORT

SUPPORT@GENUINBIOTECH.COM  
TEL: +1-540-855-7041

### ORDERS

SALES@GENUINBIOTECH.COM  
FAX: +1-540-855-7041

[WWW.GENUINBIOTECH.COM](http://WWW.GENUINBIOTECH.COM)

# **Anti-Phospho-PLCB3 (S537) Recombinant Rabbit Monoclonal Antibody**

PAGE 3

FeQ™ ECL Substrate Kit (Cat#226).

---

## **SUPPORT**

SUPPORT@GENUINBIOTECH.COM  
TEL: +1-540-855-7041

## **ORDERS**

SALES@GENUINBIOTECH.COM  
FAX: +1-540-855-7041

**WWW.GENUINBIOTECH.COM**