

Anti-T-Complex 1 Recombinant Rabbit Monoclonal Antibody



Catalog #: 4641

Aliases

TCP1; T-Complex 1; CCT1; D6S230E; Ccta; Chaperonin Containing T-Complex Polypeptide 1 Subunit 1; T-Complex Protein 1 Subunit Alpha; TCP-1-Alpha; CCT-Alpha; T-Complex Protein 1, Alpha Subunit; Tailless Complex Polypeptide 1; T-Complex 1 Protein; CCTA

Background

Gene Name: TCP

NCBI Gene Entry: [6950](#)

UniProt Entry: [P17987](#)

Application Information

Molecular Weight: Predicted, 60 kDa; observed, 60 kDa

Clonality: Rabbit monoclonal antibody

Clone ID: 24GB12215

Species Reactivity: Human

Applications Tested: Western blotting (WB), flow cytometry (FCM), immunocytochemistry (IC)

Immunogen

A synthesized peptide derived from human TCP1 alpha

Isotype

Rabbit IgG

Storage Buffer

Supplied in PBS (pH 7.4) containing 50% glycerol, and 0.02% sodium azide.

Storage

Store at -20 °C for one year.

Recommended Dilutions

Western Blotting (WB): 1:1,000-1:5,000

Immunocytochemistry (IC): 1:100-1:1,000

Flow Cytometry (FCM): 1:2,00

Note: This product is for research use only.

SUPPORT

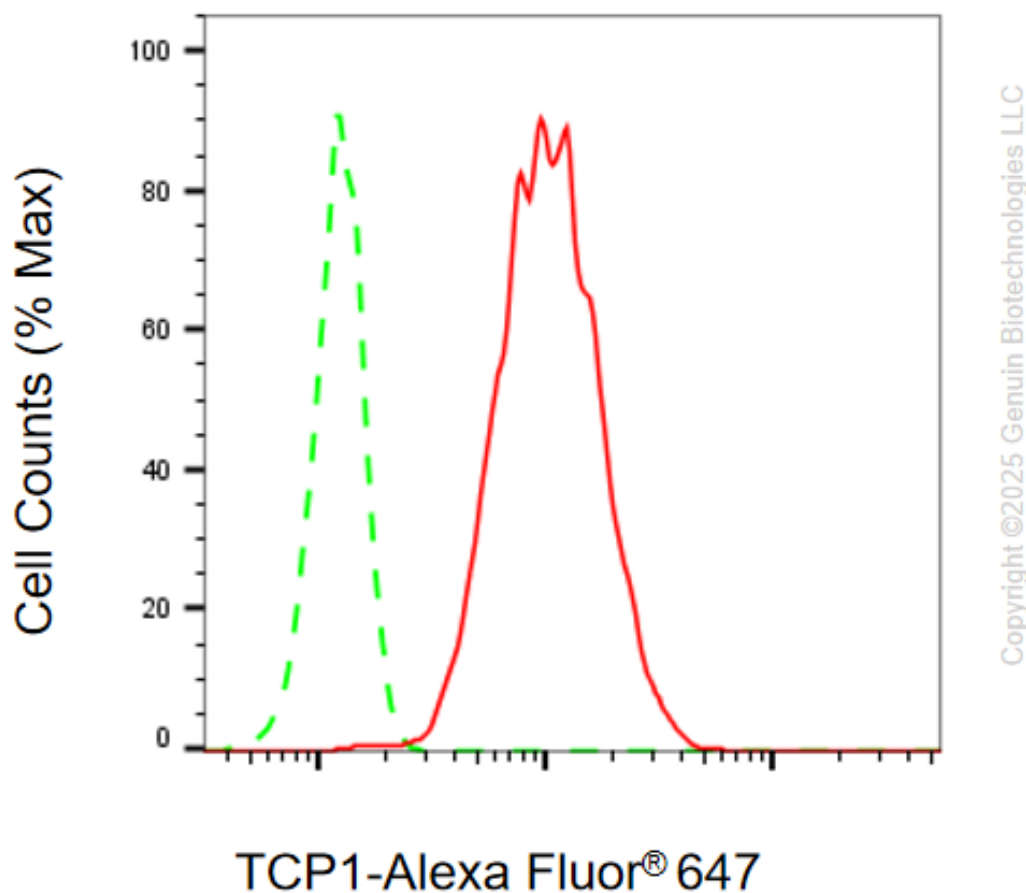
SUPPORT@GENUINBIOTECH.COM
TEL: +1-540-855-7041

ORDERS

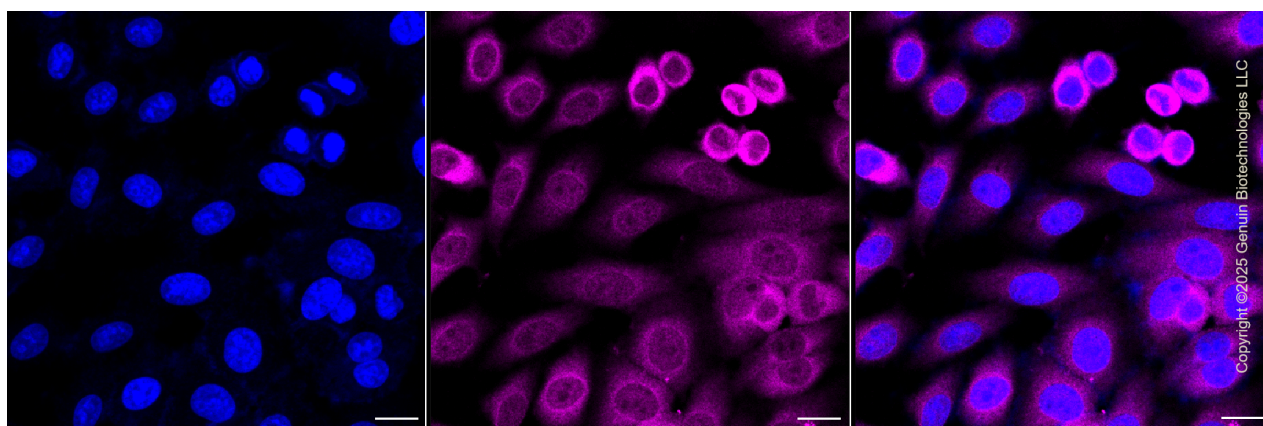
SALES@GENUINBIOTECH.COM
FAX: +1-540-855-7041

WWW.GENUINBIOTECH.COM

Validation Data



Flow cytometric analysis of TCP1 expression in HepG2 cells using anti-TCP1 antibody (Cat#4641, 1:2,000). Green, isotype control; red, TCP1.



Immunocytochemical staining of HepG2 cells with anti-TCP1 antibody (Cat#4641, 1:1,000). Nuclei were stained blue with DAPI; TCP1 was stained magenta with Alexa Fluor® 647. Images

SUPPORT

SUPPORT@GENUINBIOTECH.COM
TEL: +1-540-855-7041

ORDERS

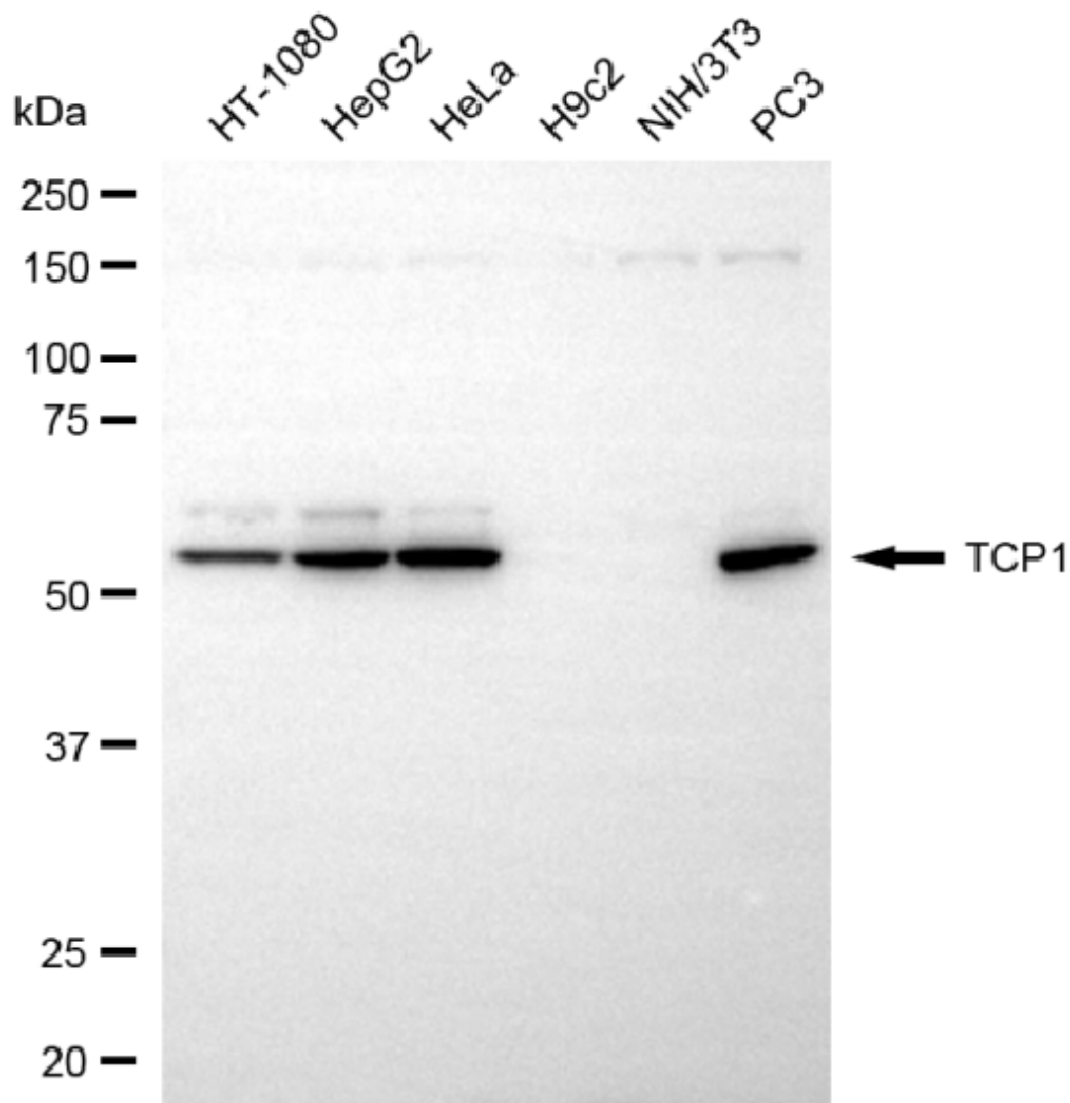
SALES@GENUINBIOTECH.COM
FAX: +1-540-855-7041

WWW.GENUINBIOTECH.COM

Anti-T-Complex 1 Recombinant Rabbit Monoclonal Antibody

PAGE 3

were taken using Leica stellaris 5. Protein abundance based on laser Intensity and smart gain: Medium. Scale bar, 20 μ m.



Copyright ©2025 Genuin Biotechnologies LLC

Western blotting analysis using anti-TCP1 antibody (Cat#4641). Total cell lysates (30 μ g) from various cell lines were loaded and separated by SDS-PAGE. The blot was incubated with anti-TCP1 antibody (Cat#4641, 1:5,000) and HRP-conjugated goat anti-rabbit secondary antibody (Cat#201, 1:20,000) respectively. Image was developed using NaQ™ ECL Substrate Kit (Cat#716).

SUPPORT

SUPPORT@GENUINBIOTECH.COM
TEL: +1-540-855-7041

ORDERS

SALES@GENUINBIOTECH.COM
FAX: +1-540-855-7041

WWW.GENUINBIOTECH.COM