

Anti-Calsyntenin 1 Recombinant Rabbit Monoclonal Antibody



Catalog #: 4644

Aliases

CLSTN1; Calsyntenin 1; KIAA0911; CDHR12; CSTN1; Alzheimer-Related Cadherin-Like Protein; Cadherin-Related Family Member 12; Non-Classical Cadherin XB31alpha; Alcadein-Alpha; Calsyntenin-1; ALC-ALPHA; XB31alpha; Alcalpha1; Alcalpha2; Alc-Alpha; PIK3CD; CST-1; CS1

Background

Gene Name: CLSTN1

NCBI Gene Entry: [22883](#)

UniProt Entry: [O94985](#)

Application Information

Molecular Weight: Predicted, 110 kDa; observed, 150 kDa

Clonality: Rabbit monoclonal antibody

Clone ID: 24GB12230

Species Reactivity: Human, mouse, rat

Applications Tested: Western blotting (WB), flow cytometry (FCM), immunocytochemistry (IC)

Immunogen

A synthesized peptide derived from human CLSTN1

Isotype

Rabbit IgG

Storage Buffer

Supplied in PBS (pH 7.4) containing 50% glycerol, and 0.02% sodium azide.

Storage

Store at -20 °C for one year.

Recommended Dilutions

Western Blotting (WB): 1:1,000-1:5,000

Flow Cytometry (FCM): 1:2,000

Immunocytochemistry (IC): 1:100-1:1,000

SUPPORT

SUPPORT@GENUINBIOTECH.COM
TEL: +1-540-855-7041

ORDERS

SALES@GENUINBIOTECH.COM
FAX: +1-540-855-7041

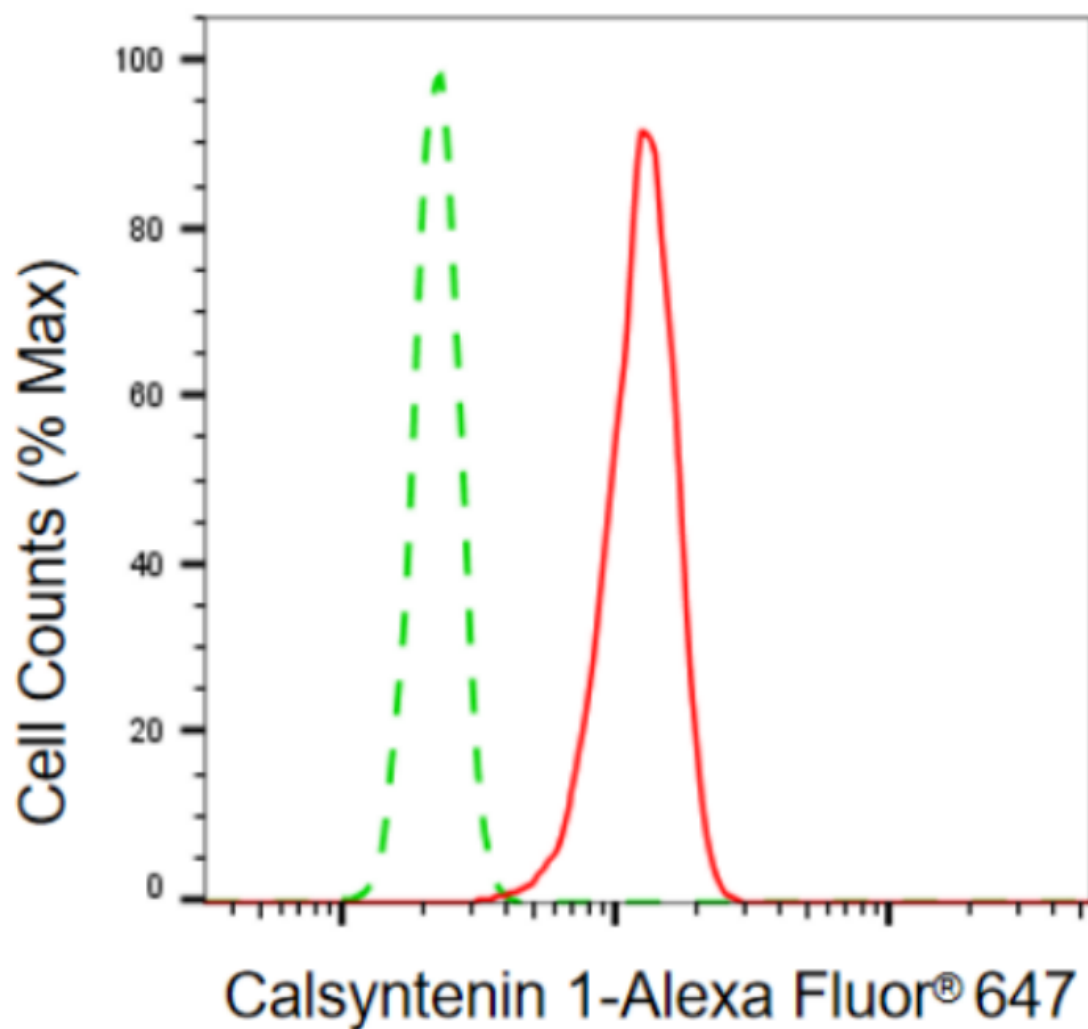
WWW.GENUINBIOTECH.COM

Anti-Calsyntenin 1 Recombinant Rabbit Monoclonal Antibody

PAGE 2

Note: This product is for research use only.

Validation Data



Copyright ©2024 Genuin Biotechnologies LLC

Flow cytometric analysis of calsyntenin 1 expression in HT-1080 cells using anti-calsyntenin 1 antibody (Cat#4644, 1:2,000). Green, isotype control; red, calsyntenin 1.

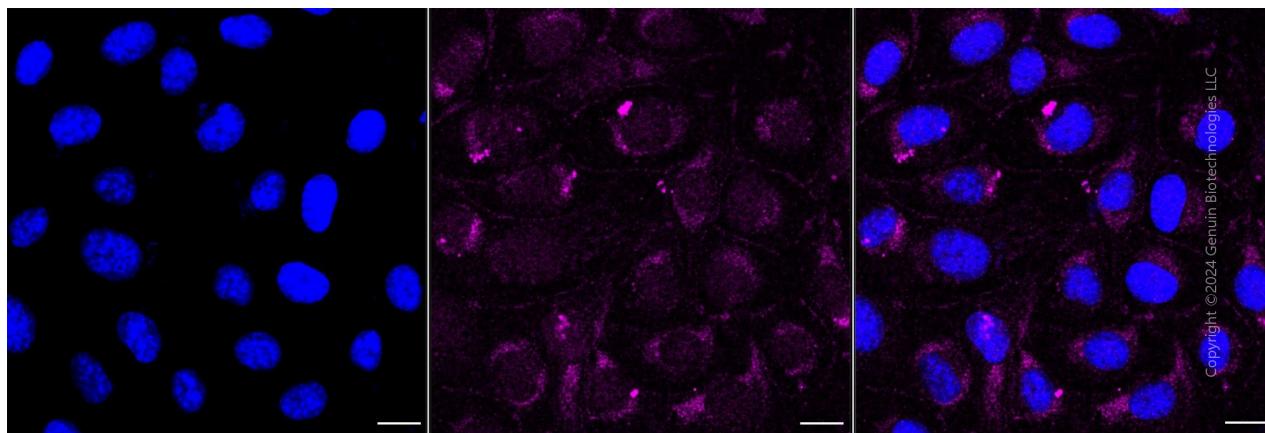
SUPPORT

SUPPORT@GENUINBIOTECH.COM
TEL: +1-540-855-7041

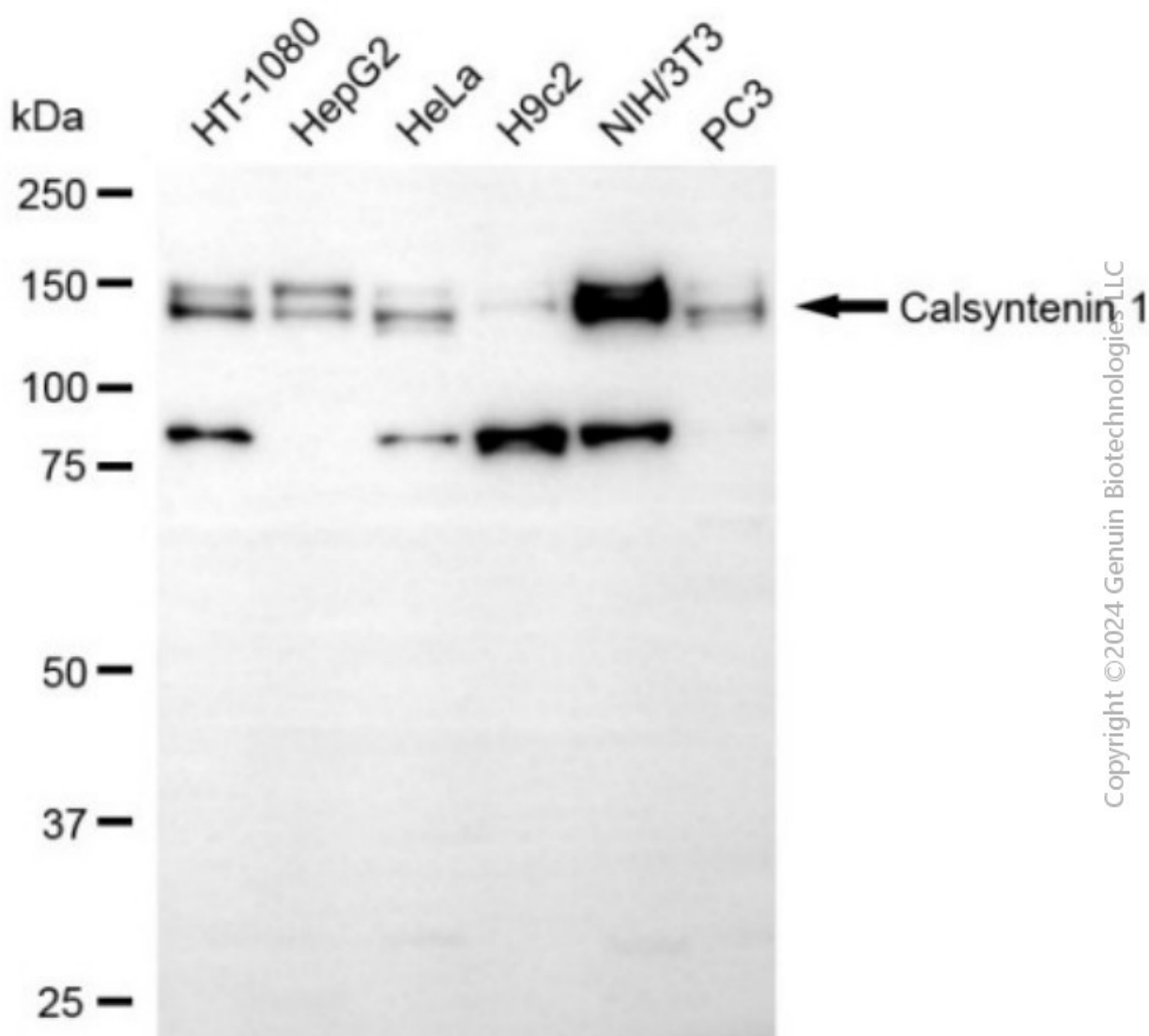
ORDERS

SALES@GENUINBIOTECH.COM
FAX: +1-540-855-7041

WWW.GENUINBIOTECH.COM



Immunocytochemical staining of HT-1080 cells with anti-Calsyntenin 1 antibody (Cat#4644, 1:1,000) . Nuclei were stained blue with DAPI; Calsyntenin 1 was stained magenta with Alexa Fluor® 647. Images were taken using Leica stellaris 5. Protein abundance based on laser Intensity and smart gain: Medium. Scale bar, 20 μ m.



Copyright © 2024 Genuin Biotechnologies LLC

Western blotting analysis using anti-calsyntenin 1 antibody (Cat#4644). Total cell lysates (30 μ g) from various cell lines were loaded and separated by SDS-PAGE. The blot was incubated with anti-calsyntenin 1 antibody (Cat#4644, 1:5,000) and HRP-conjugated goat anti-rabbit secondary antibody (Cat#201, 1:20,000) respectively. Image was developed using NaQ™ ECL Substrate Kit (Cat#716).