

Anti-PRKAR2A Recombinant Rabbit Monoclonal Antibody



Catalog #: 4646

Aliases

Protein Kinase CAMP-Dependent Type II Regulatory Subunit Alpha; PRKAR2; Protein Kinase, CAMP-Dependent, Regulatory Subunit Type II Alpha; CAMP-Dependent Protein Kinase Type II-Alpha Regulatory Subunit; PKR2; Protein Kinase, CAMP-Dependent, Regulatory, Type II, Alpha; CAMP-Dependent Protein Kinase Regulatory Subunit RII Alpha; Protein Kinase A, RII-Alpha Subunit

Background

Gene Name: PRKAR2A

NCBI Gene Entry: [5576](#)

UniProt Entry: [P13861](#)

Application Information

Molecular Weight: Predicted, 46 kDa; observed, 52 kDa

Clonality: Rabbit monoclonal antibody

Clone ID: 24GB12240

Species Reactivity: Human, rat

Applications Tested: Western blotting (WB), flow cytometry (FCM), immunocytochemistry (IC)

Immunogen

A synthesized peptide derived from human PKA R2

Isotype

Rabbit IgG

Storage Buffer

Supplied in PBS (pH 7.4) containing 50% glycerol, and 0.02% sodium azide.

Storage

Store at -20 °C for one year.

Recommended Dilutions

Western Blotting (WB): 1:1,000-1:5,000

Flow Cytometry (FCM): 1:2,000

Immunocytochemistry (IC): 1:100-1:1,000

SUPPORT

SUPPORT@GENUINBIOTECH.COM
TEL: +1-540-855-7041

ORDERS

SALES@GENUINBIOTECH.COM
FAX: +1-540-855-7041

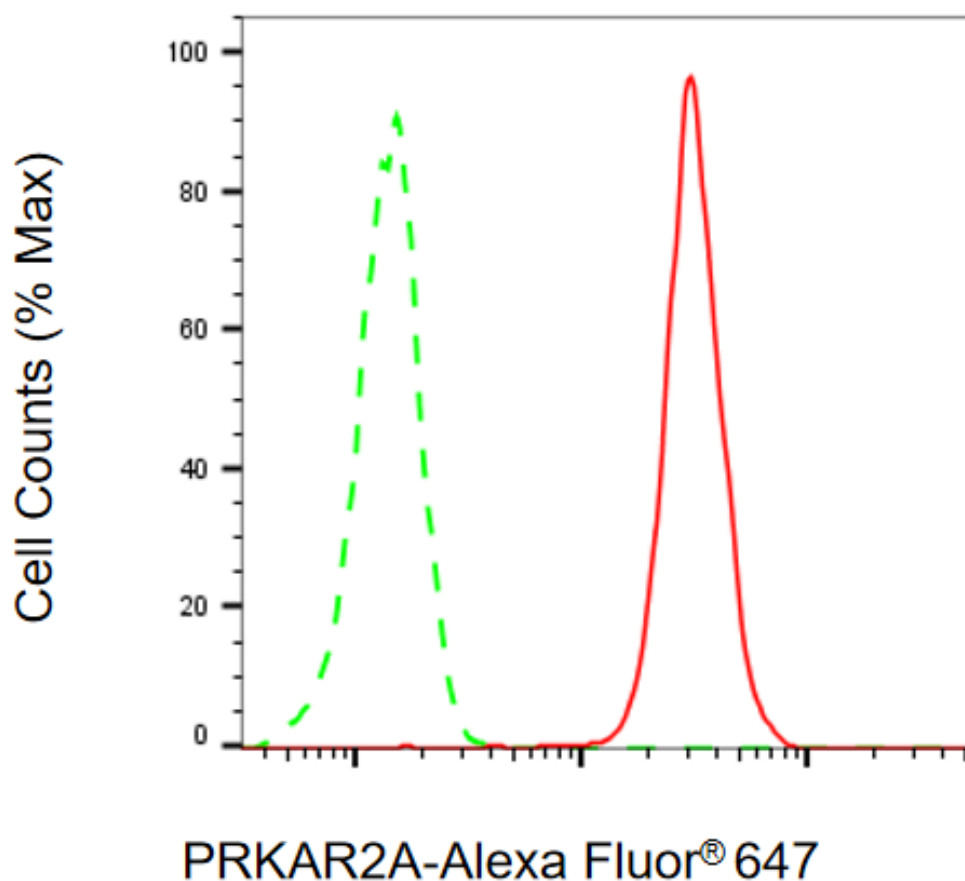
WWW.GENUINBIOTECH.COM

Anti-PRKAR2A Recombinant Rabbit Monoclonal Antibody

PAGE 2

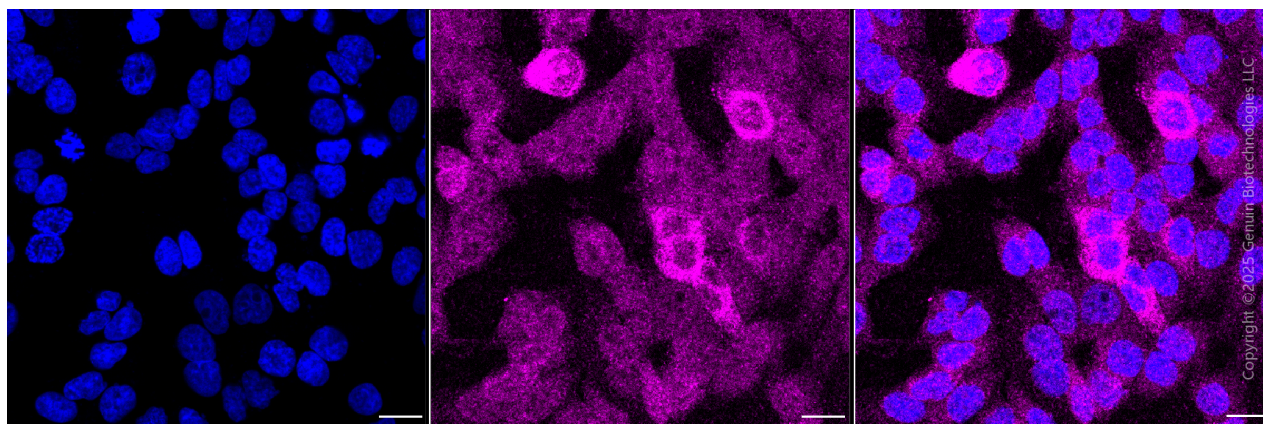
Note: This product is for research use only.

Validation Data



Copyright ©2025 Genuin Biotechnologies LLC

Flow cytometric analysis of PRKAR2A expression in HAP-1 cells using anti-PRKAR2A antibody (Cat#4646, 1:2,000). Green, isotype control; red, PRKAR2A.



Immunocytochemical staining of HAP1 cells with anti-PRKAR2A antibody (Cat#4646, 1:1,000) .

SUPPORT

SUPPORT@GENUINBIOTECH.COM
TEL: +1-540-855-7041

ORDERS

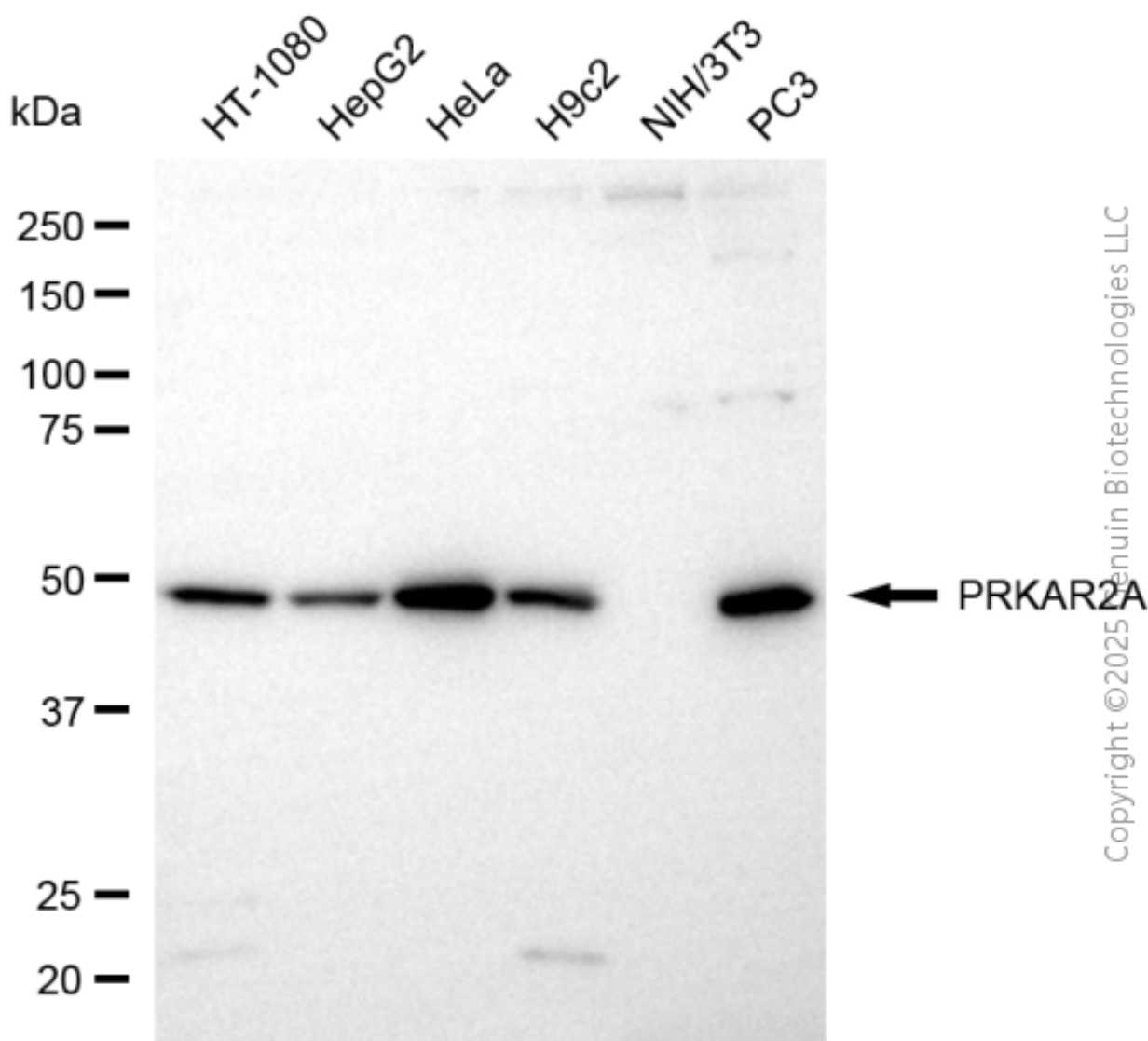
SALES@GENUINBIOTECH.COM
FAX: +1-540-855-7041

WWW.GENUINBIOTECH.COM

Anti-PRKAR2A Recombinant Rabbit Monoclonal Antibody

PAGE 3

Nuclei were stained blue with DAPI;PRKAR2A was stained magenta with Alexa Fluor® 647. Images were taken using Leica stellaris 5. Protein abundance based on laser Intensity and smart gain: Medium. Scale bar, 20 μ m.



Western blotting analysis using anti-PRKAR2A antibody (Cat#4646). Total cell lysates (30 μ g) from various cell lines were loaded and separated by SDS-PAGE. The blot was incubated with anti-PRKAR2A antibody (Cat#4646, 1:5,000) and HRP-conjugated goat anti-rabbit secondary antibody (Cat#201, 1:20,000) respectively. Image was developed using NaQ™ ECL Substrate Kit (Cat#716).

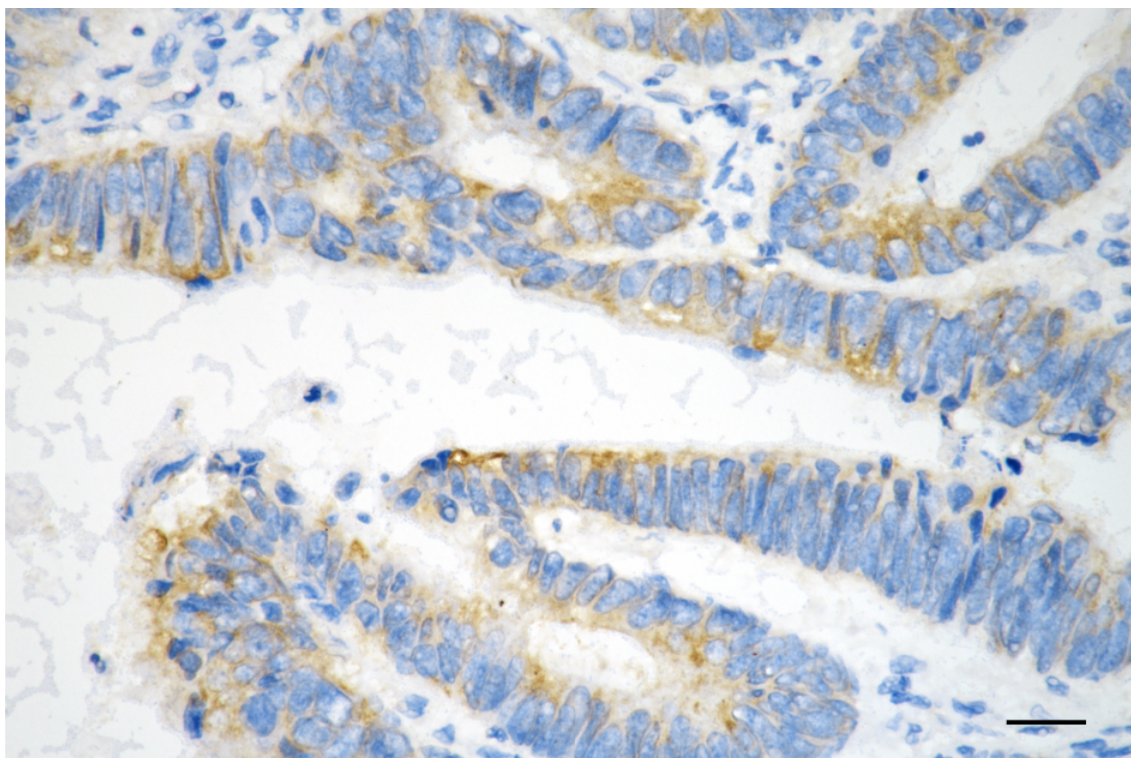
SUPPORT

SUPPORT@GENUINBIOTECH.COM
TEL: +1-540-855-7041

ORDERS

SALES@GENUINBIOTECH.COM
FAX: +1-540-855-7041

WWW.GENUINBIOTECH.COM



Copyright ©2025 Genuin Biotechnologies LLC

Immunohistochemistry was performed on paraffin-embedded human sigmoid colon carcinoma using anti-PRKAR2A antibody (Cat#4646, 1:200). Antigen retrieval was done in sodium citrate buffer (pH 6.0). DAB was used for detection, with hematoxylin counterstaining. Images were acquired using a Nikon Ci-L Plus microscope (40× objective). Scale bar: 25 μ m.