

Anti-Fibronectin 1 Recombinant Rabbit Monoclonal Antibody



Catalog #: 4647

Aliases

Fibronectin1; CIG; Cold-Insoluble Globulin; GFND2; LETS ; FINC; MSF; Migration-Stimulating Factor; Lnc-ABCA12-8; Fibronectin; FN; Epididymis Secretory Sperm Binding Protein; LNC-ABCA12-8; SMDCF; ED-B; GFND; FNZ

Background

Gene Name: FN1

NCBI Gene Entry: [2335](#)

UniProt Entry: [P02751](#)

Application Information

Molecular Weight: Predicted, 263 kDa; observed, 263 kDa

Clonality: Rabbit monoclonal antibody

Clone ID: 24GB12245

Species Reactivity: Human, mouse, rat

Applications Tested: Western blotting (WB), flow cytometry (FCM), immunocytochemistry (IC)

Immunogen

A synthesized peptide derived from human Fibronectin

Isotype

Rabbit IgG

Storage Buffer

Supplied in PBS (pH 7.4) containing 50% glycerol, and 0.02% sodium azide.

Storage

Store at -20 °C for one year.

Recommended Dilutions

Western Blotting (WB): 1:1,000-1:5,000

Flow Cytometry (FCM): 1:2,000

Immunocytochemistry (IC): 1:100-1:1,000

Note: This product is for research use only.

SUPPORT

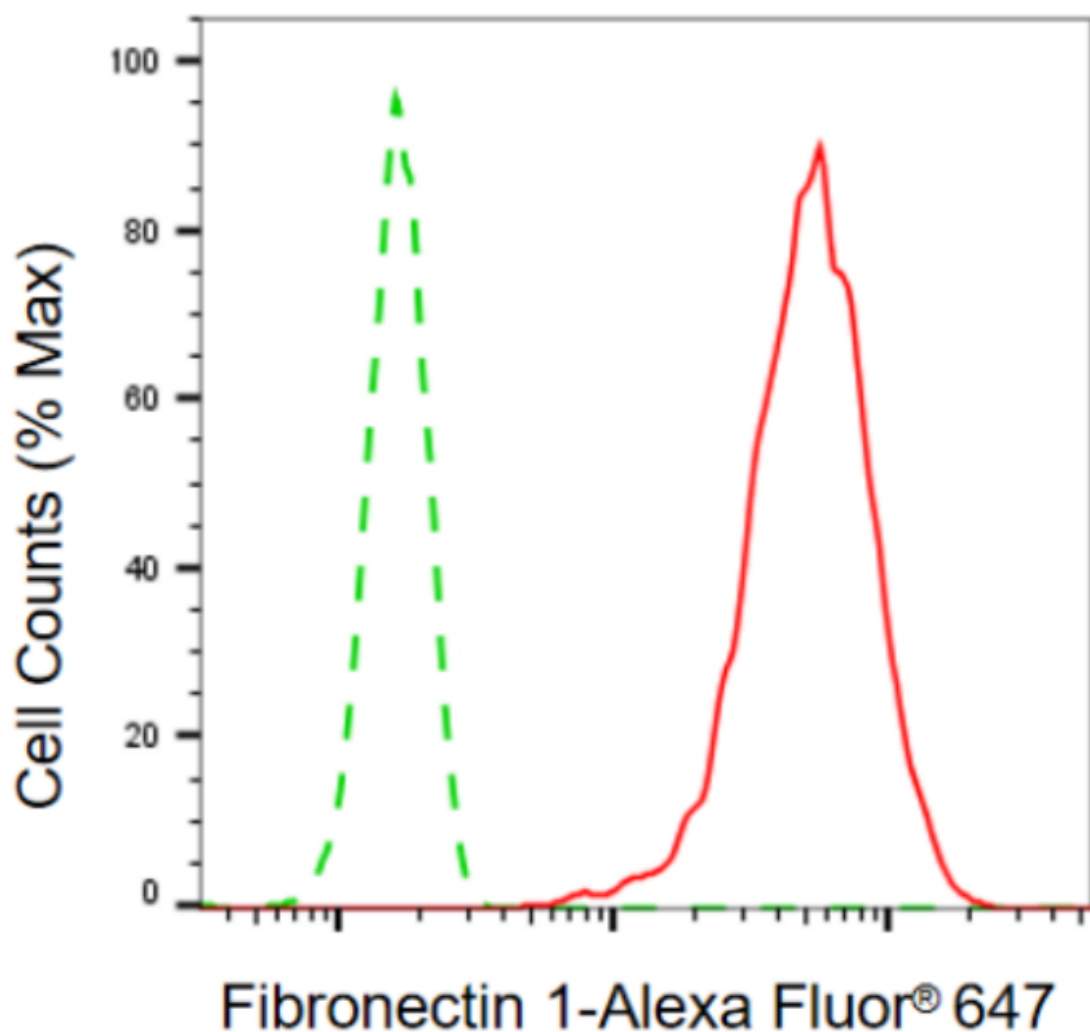
SUPPORT@GENUINBIOTECH.COM
TEL: +1-540-855-7041

ORDERS

SALES@GENUINBIOTECH.COM
FAX: +1-540-855-7041

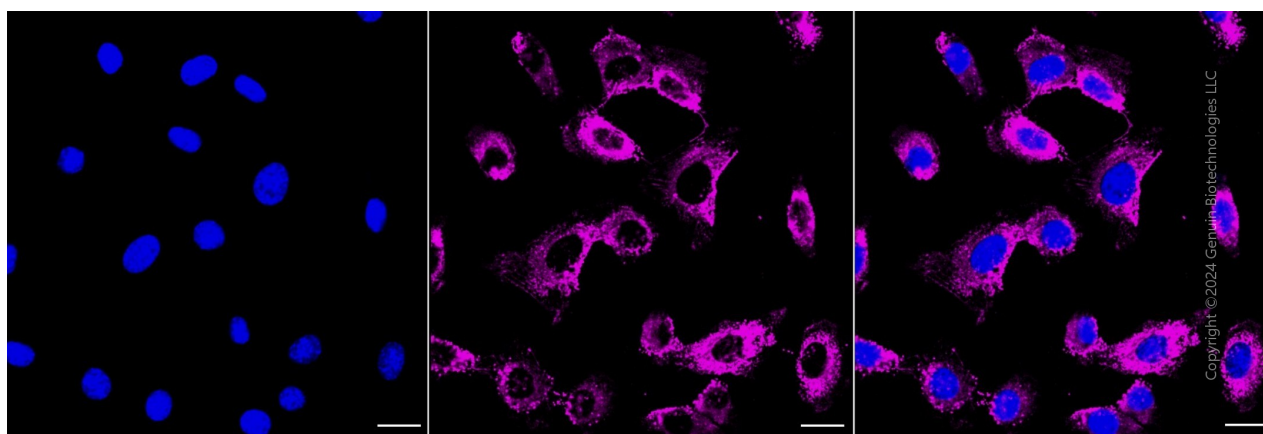
WWW.GENUINBIOTECH.COM

Validation Data



Copyright ©2024 Genuin Biotechnologies LLC

Flow cytometric analysis of fibronectin 1 expression in C2C12 cells using anti-fibronectin 1 antibody (Cat#4647, 1:2,000). Green, isotype control; red, fibronectin 1.



Copyright ©2024 Genuin Biotechnologies LLC

SUPPORT

SUPPORT@GENUINBIOTECH.COM
TEL: +1-540-855-7041

ORDERS

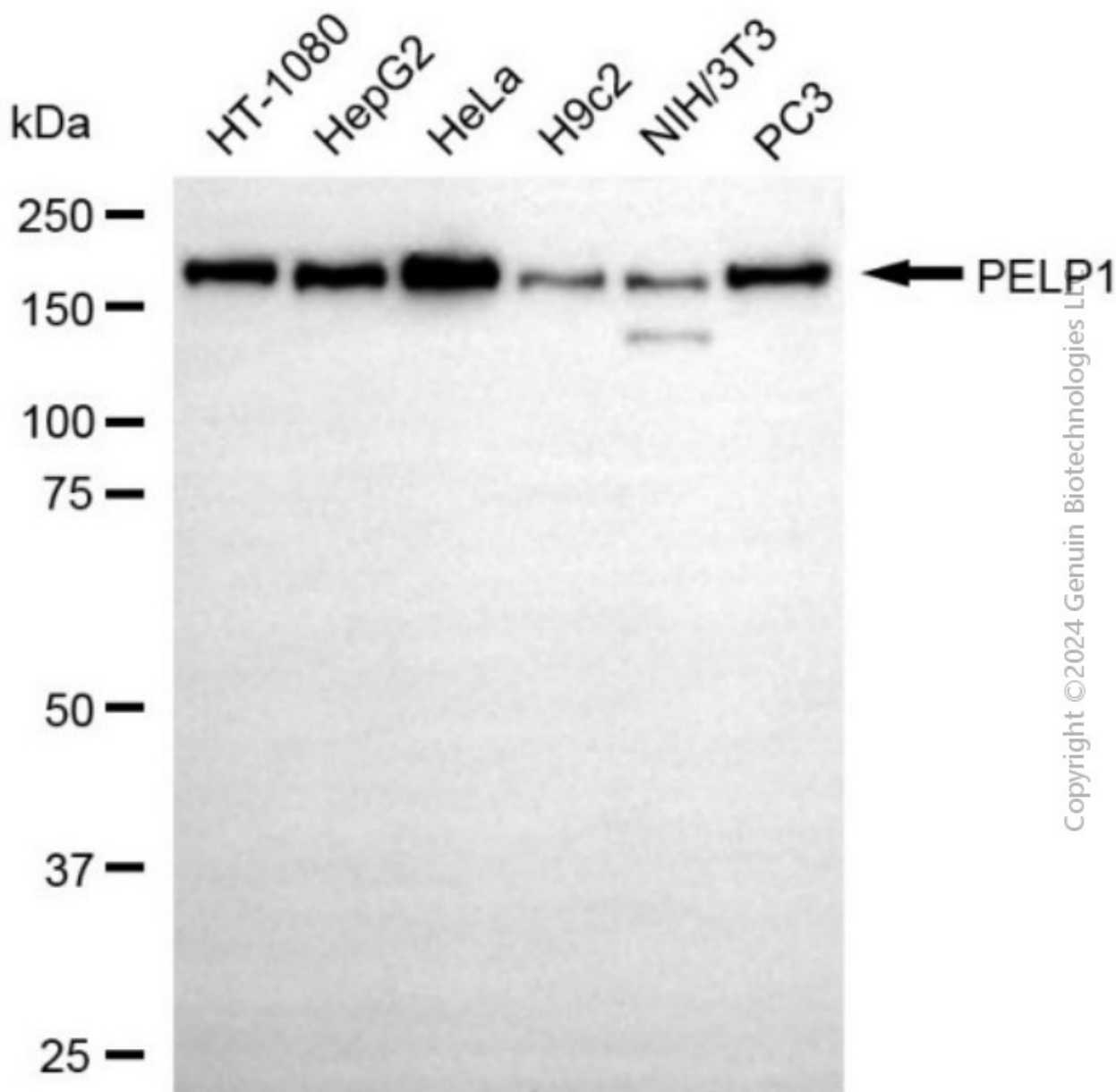
SALES@GENUINBIOTECH.COM
FAX: +1-540-855-7041

WWW.GENUINBIOTECH.COM

Anti-Fibronectin 1 Recombinant Rabbit Monoclonal Antibody

PAGE 3

Immunocytochemical staining of C2C12 cells with anti-Fibronectin 1 antibody (Cat#4647, 1:1,000). Nuclei were stained blue with DAPI; Fibronectin 1 was stained magenta with Alexa Fluor® 647. Images were taken using Leica stellaris 5. Protein abundance based on laser Intensity and smart gain: High. Scale bar, 20 μ m.



Western blotting analysis using anti-fibronectin 1 antibody (Cat#4647). Total cell lysates (30 μ g) from various cell lines were loaded and separated by SDS-PAGE. The blot was incubated with anti-fibronectin 1 antibody (Cat#4647, 1:5,000) and HRP-conjugated goat anti-rabbit secondary antibody (Cat#201, 1:20,000) respectively. Image was developed using NaQ™ ECL Substrate Kit (Cat#716).

SUPPORT

SUPPORT@GENUINBIOTECH.COM
TEL: +1-540-855-7041

ORDERS

SALES@GENUINBIOTECH.COM
FAX: +1-540-855-7041

WWW.GENUINBIOTECH.COM