

Anti-EHMT2/G9A Recombinant Rabbit Monoclonal Antibody



Catalog #: 4652

Aliases

KMT1C; G9A; C6orf3; BAT8; Euchromatic Histone-Lysine N-Methyltransferase; Histone-Lysine N-Methyltransferase EHMT2; Histone H3-K9 Methyltransferase; HLA-B Associated Transcript 8; Lysine N-Methyltransferase 1C; H3-K9-HMTase; Em:AF134726.3; NG36/G9a; NG36; Histone-Lysine N-Methyltransferase, H3 Lysine-9 Specific 3; Chromosome 6 Open Reading Frame 30; Ankyrin Repeat-Containing Protein; G9A Histone Methyltransferase; HLA-B-Associated Transcript 8; EC 2.1.1.367; Protein G9a; EC 2.1.1.-; GAT8

Background

Gene Name: EHMT2

NCBI Gene Entry: [10919](#)

UniProt Entry: [Q96KQ7](#)

Application Information

Molecular Weight: Predicted, 132 kDa; observed, 160,180 kDa

Clonality: Rabbit monoclonal antibody

Clone ID: 24GB12270

Species Reactivity: Human

Applications Tested: Western blotting (WB), flow cytometry (FCM), immunocytochemistry (IC)

Immunogen

A synthesized peptide derived from human EHMT2/G9A

Isotype

Rabbit IgG

Storage Buffer

Supplied in PBS (pH 7.4) containing 50% glycerol, and 0.02% sodium azide.

Storage

Store at -20 °C for one year.

Recommended Dilutions

Western Blotting (WB): 1:1,000-1:5,000

Flow Cytometry (FCM): 1:2,000

Immunocytochemistry (IC): 1:100-1:1,000

SUPPORT

SUPPORT@GENUINBIOTECH.COM
TEL: +1-540-855-7041

ORDERS

SALES@GENUINBIOTECH.COM
FAX: +1-540-855-7041

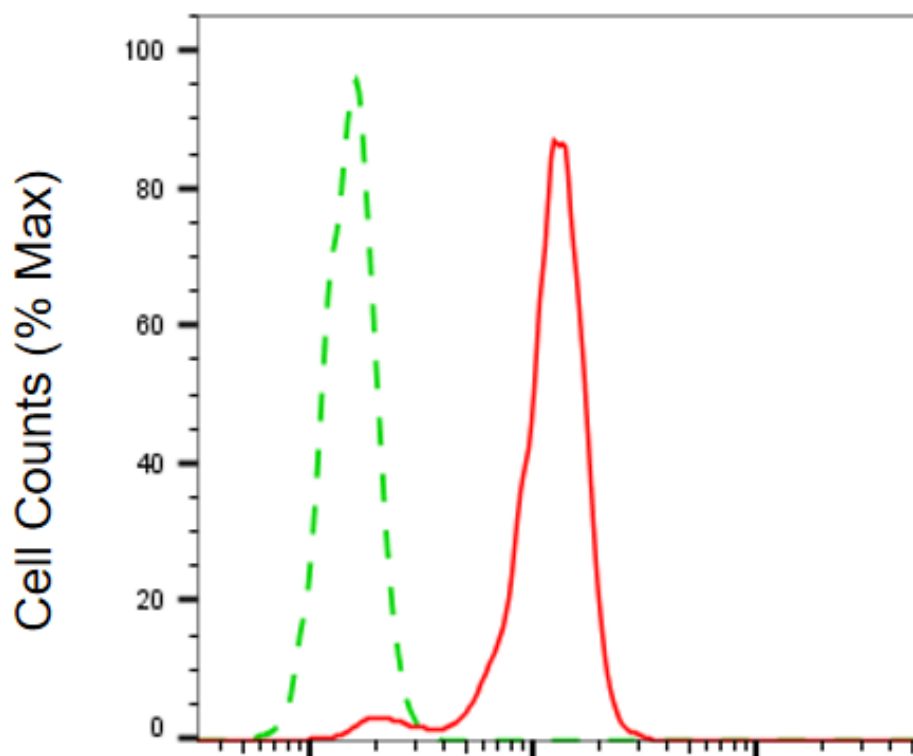
WWW.GENUINBIOTECH.COM

Anti-EHMT2/G9A Recombinant Rabbit Monoclonal Antibody

PAGE 2

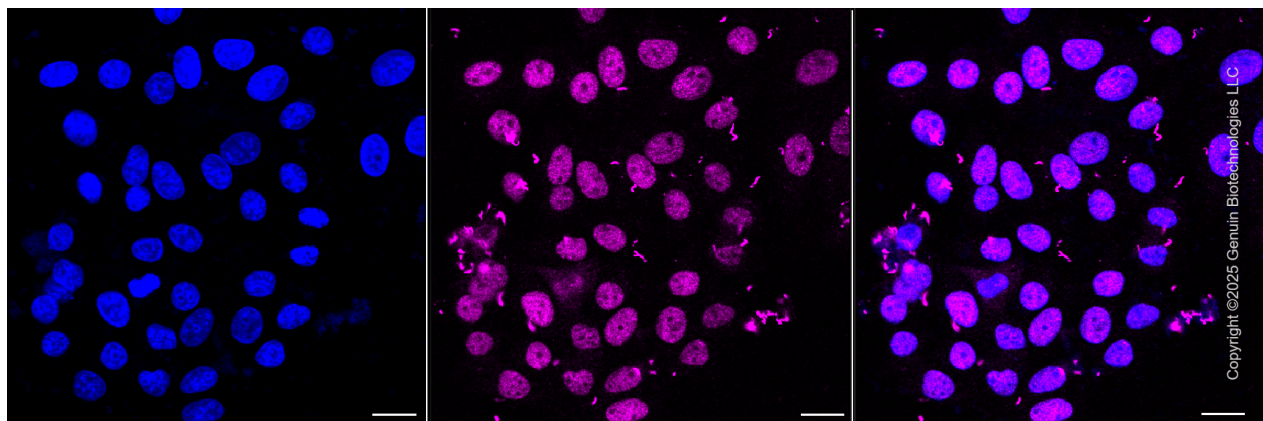
Note: This product is for research use only.

Validation Data



EHMT2/G9A-Alexa Fluor® 647

Flow cytometric analysis of EHMT2/G9A expression in HeLa cells using anti-EHMT2/G9A antibody (Cat#4652, 1:2,000). Green, isotype control; red, EHMT2/G9A.



SUPPORT

SUPPORT@GENUINBIOTECH.COM
TEL: +1-540-855-7041

ORDERS

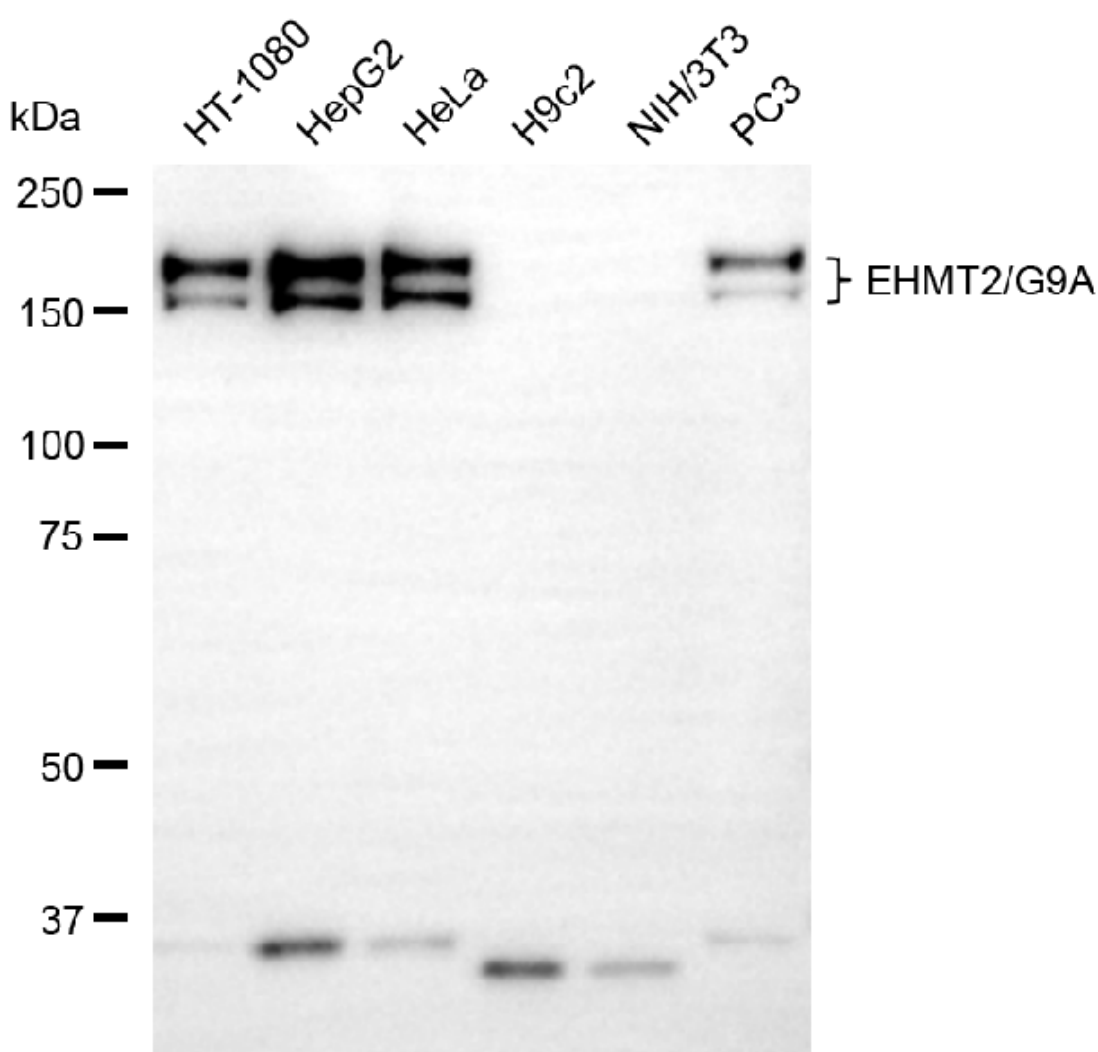
SALES@GENUINBIOTECH.COM
FAX: +1-540-855-7041

WWW.GENUINBIOTECH.COM

Anti-EHMT2/G9A Recombinant Rabbit Monoclonal Antibody

PAGE 3

Immunocytochemical staining of HepG2 cells with anti-EHMT2/G9A antibody (Cat#4652, 1:1,000). Nuclei were stained blue with DAPI; EHMT2/G9A was stained magenta with Alexa Fluor® 647. Images were taken using Leica stellaris 5. Protein abundance based on laser Intensity and smart gain: Medium. Scale bar, 20 μ m.



Copyright ©2025 Genuin Biotechnologies LLC

Western blotting analysis using anti-EHMT2/G9A antibody (Cat#4652). Total cell lysates (30 μ g) from various cell lines were loaded and separated by SDS-PAGE. The blot was incubated with anti-EHMT2/G9A antibody (Cat#4652, 1:5,000) and HRP-conjugated goat anti-rabbit secondary antibody (Cat#201, 1:20,000) respectively. Image was developed using FeQ™ ECL Substrate Kit (Cat#226).

SUPPORT

SUPPORT@GENUINBIOTECH.COM
TEL: +1-540-855-7041

ORDERS

SALES@GENUINBIOTECH.COM
FAX: +1-540-855-7041

WWW.GENUINBIOTECH.COM