

Anti-BCL2 like 12 Recombinant Rabbit Monoclonal Antibody



Catalog #: 4657

Aliases

BCL2L12; BCL2 Like 12; BCL2-Like 12 (Proline Rich); Bcl-2-Like Protein 12; Bcl-2 Related Proline-Rich Protein; Bcl-2-Related Proline-Rich Protein; Bcl2-L-12; BPR

Background

Gene Name: BCL2L12

NCBI Gene Entry: [83596](#)

UniProt Entry: [Q9HB09](#)

Application Information

Molecular Weight: Predicted, 37 kDa; observed, 30 kDa

Clonality: Rabbit monoclonal antibody

Clone ID: 24GB12295

Species Reactivity: Human

Applications Tested: Western blotting (WB), flow cytometry (FCM)

Immunogen

A synthesized peptide derived from human BCL2L12

Isotype

Rabbit IgG

Storage Buffer

Supplied in PBS (pH 7.4) containing 50% glycerol, and 0.02% sodium azide.

Storage

Store at -20 °C for one year.

Recommended Dilutions

Western Blotting (WB): 1:1,000-1:5,000

Flow Cytometry (FCM): 1:2,000

Note: This product is for research use only.

Validation Data

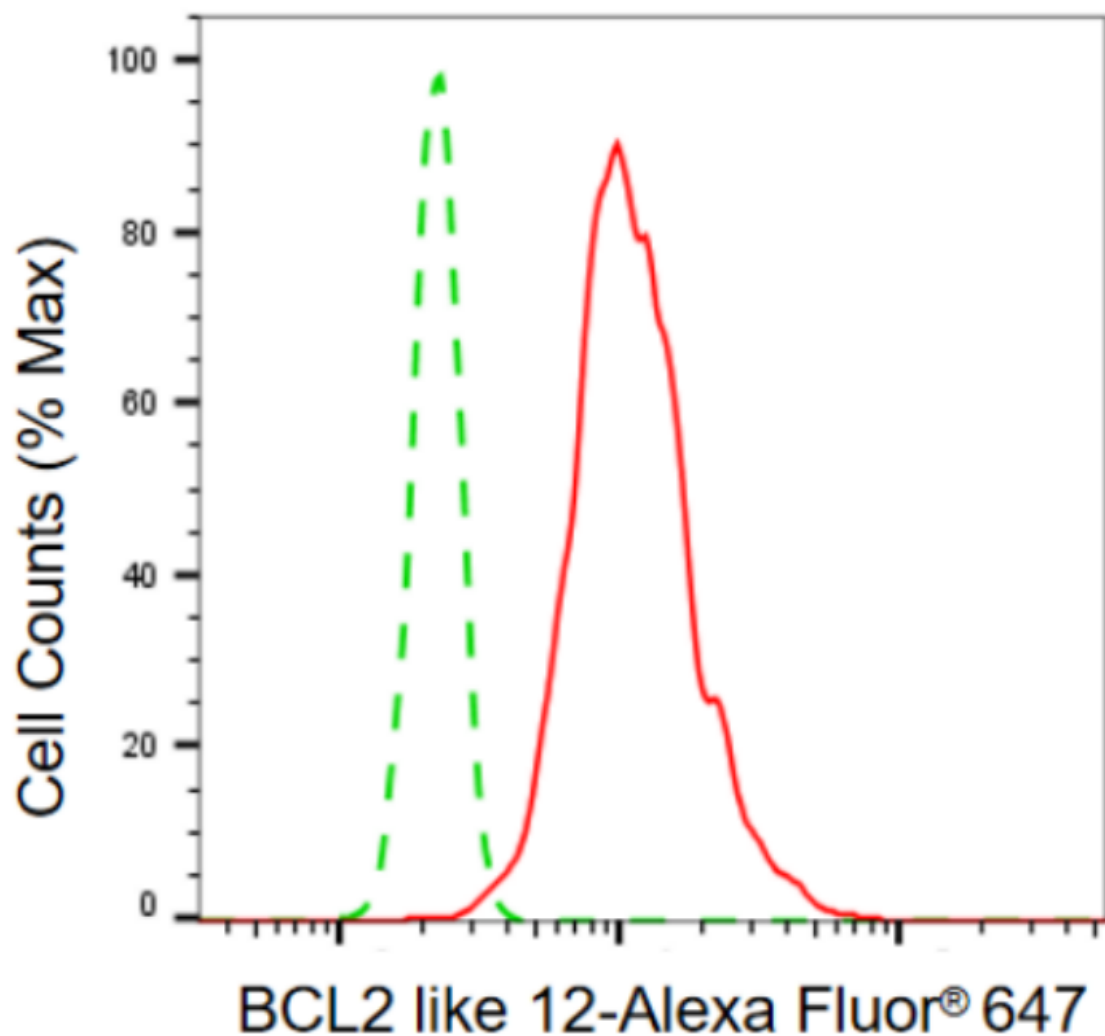
SUPPORT

SUPPORT@GENUINBIOTECH.COM
TEL: +1-540-855-7041

ORDERS

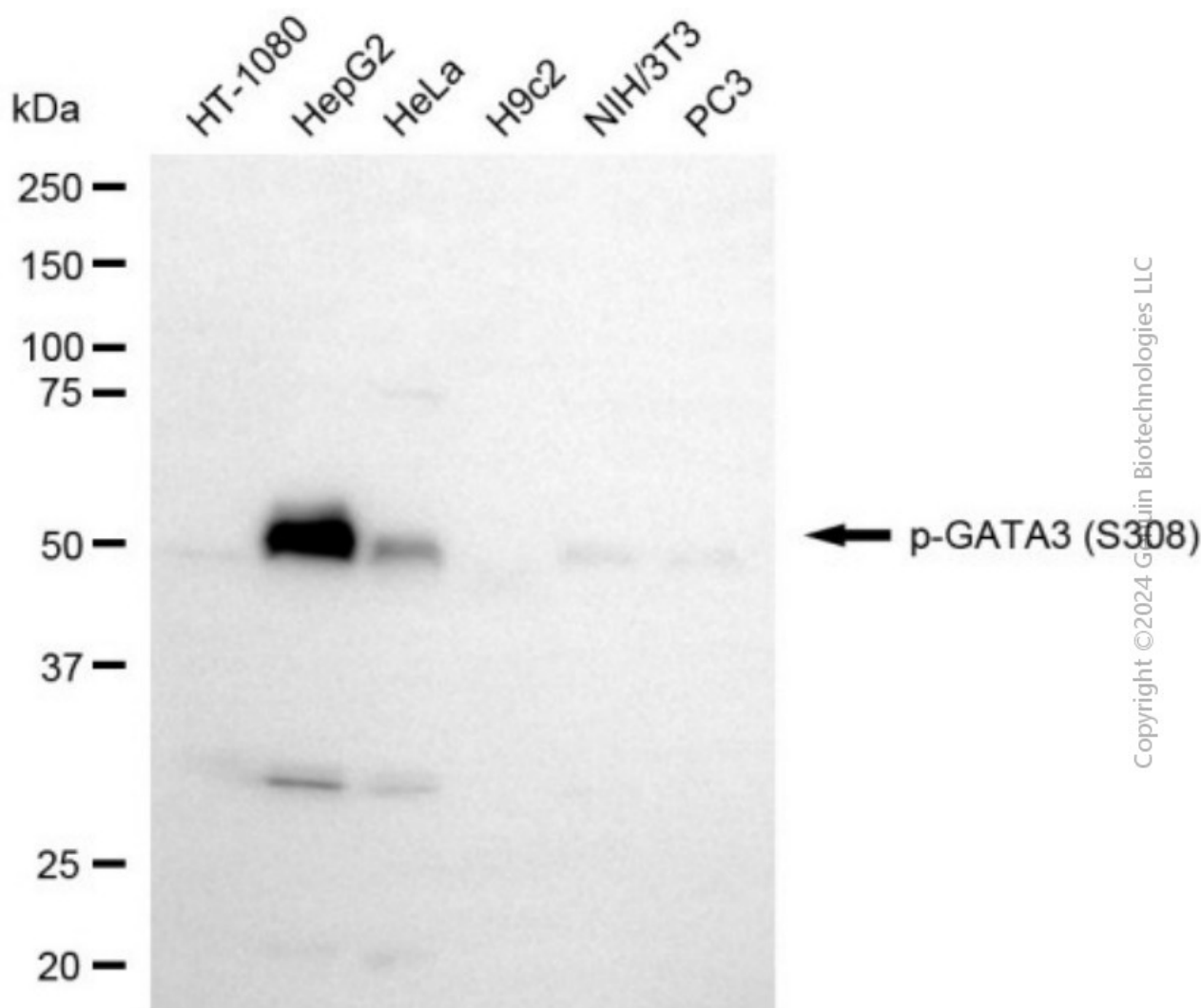
SALES@GENUINBIOTECH.COM
FAX: +1-540-855-7041

WWW.GENUINBIOTECH.COM



Copyright ©2024 Genuin Biotechnologies LLC

Flow cytometric analysis of BCL2 like 12 expression in HT-1080 cells using anti-BCL2 like 12 antibody (Cat#4657, 1:2,000). Green, isotype control; red, BCL2 like 12.



Western blotting analysis using anti-BCL2 like 12 antibody (Cat#4657). Total cell lysates (30 µg) from various cell lines were loaded and separated by SDS-PAGE. The blot was incubated with anti-BCL2 like 12 antibody (Cat#4657, 1:5,000) and HRP-conjugated goat anti-rabbit secondary antibody (Cat#201, 1:20,000) respectively. Image was developed using NaQ™ ECL Substrate Kit (Cat#716).