

Anti-NIMA Related Kinase 6 Recombinant Rabbit Monoclonal Antibody



Catalog #: 4659

Aliases

NIMA Related Kinase 6; SID6-1512; NIMA (Never In Mitosis Gene A)-Related Kinase 6; Putative Serine-Threonine Protein Kinase; Serine/Threonine-Protein Kinase Nek6; Never In Mitosis A-Related Kinase 6; NimA-Related Protein Kinase 6; Protein Kinase SID6-1512; EC 2.7.11.34; EC 2.7.11.1

Background

Gene Name: NEK6

NCBI Gene Entry: [10783](#)

UniProt Entry: [Q9HC98](#)

Application Information

Molecular Weight: Predicted, 36 kDa; observed, 28 kDa

Clonality: Rabbit monoclonal antibody

Clone ID: 24GB12305

Species Reactivity: Human, mouse, rat

Applications Tested: Western blotting (WB), flow cytometry (FCM), immunocytochemistry (IC)

Immunogen

A synthesized peptide derived from human NEK6

Isotype

Rabbit IgG

Storage Buffer

Supplied in PBS (pH 7.4) containing 50% glycerol, and 0.02% sodium azide.

Storage

Store at -20 °C for one year.

Recommended Dilutions

Western Blotting (WB): 1:1,000-1:5,000

Flow Cytometry (FCM): 1:2,000

Immunocytochemistry (IC): 1:100-1:1,000

SUPPORT

SUPPORT@GENUINBIOTECH.COM
TEL: +1-540-855-7041

ORDERS

SALES@GENUINBIOTECH.COM
FAX: +1-540-855-7041

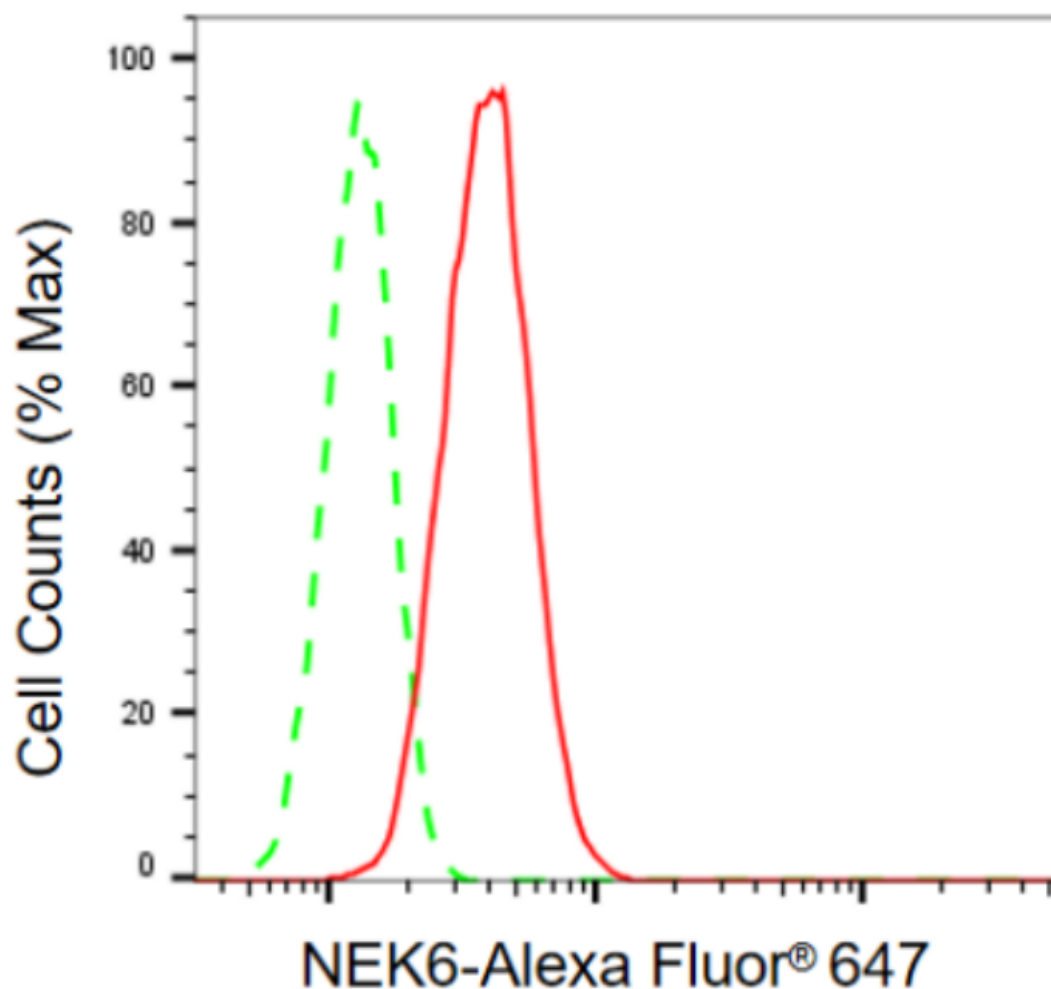
WWW.GENUINBIOTECH.COM

Anti-NIMA Related Kinase 6 Recombinant Rabbit Monoclonal Antibody

PAGE 2

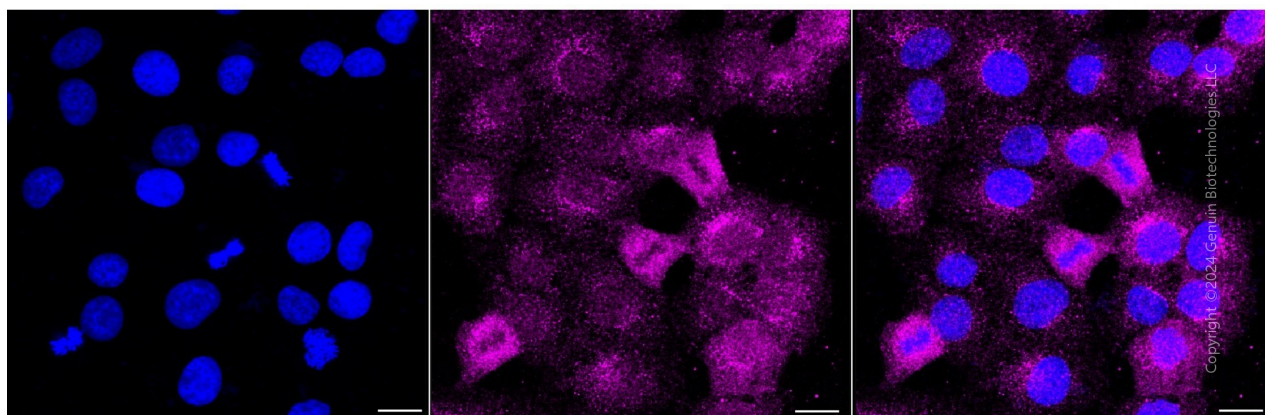
Note: This product is for research use only.

Validation Data



Copyright ©2024 Genuin Biotechnologies LLC

Flow cytometric analysis of NEK6 expression in HT-1080 cells using anti-NEK6 antibody (Cat#4659, 1:2,000). Green, isotype control; red, NEK6.



Copyright ©2024 Genuin Biotechnologies LLC

SUPPORT

SUPPORT@GENUINBIOTECH.COM
TEL: +1-540-855-7041

ORDERS

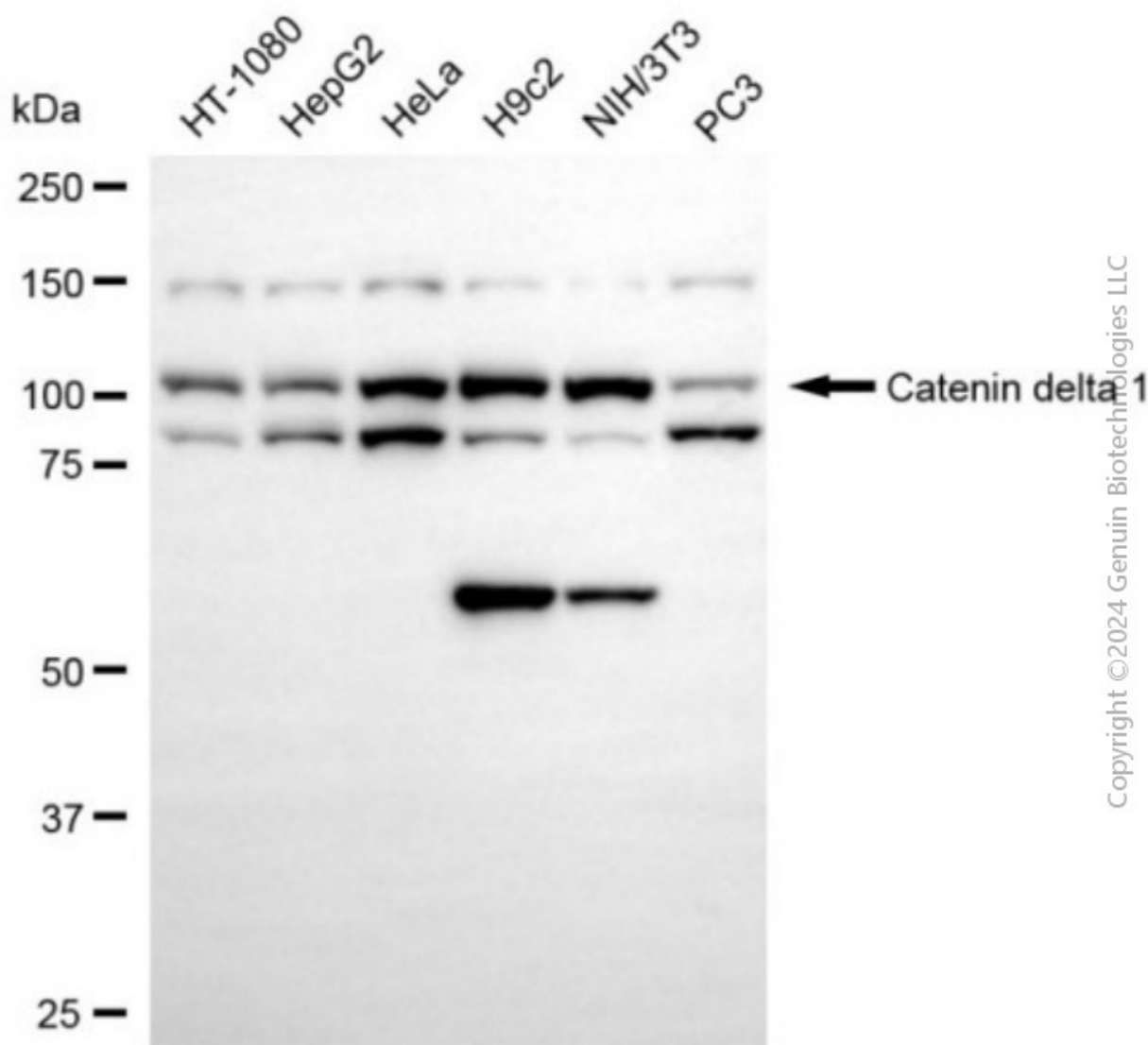
SALES@GENUINBIOTECH.COM
FAX: +1-540-855-7041

WWW.GENUINBIOTECH.COM

Anti-NIMA Related Kinase 6 Recombinant Rabbit Monoclonal Antibody

PAGE 3

Immunocytochemical staining of HT-1080 cells with anti-NEK6 antibody (Cat#4659, 1:1,000). Nuclei were stained blue with DAPI; NEK6 was stained magenta with Alexa Fluor® 647. Images were taken using Leica stellaris 5. Protein abundance based on laser Intensity and smart gain: Medium. Scale bar, 20 μ m.



Western blotting analysis using anti-NEK6 antibody (Cat#4659). Total cell lysates (30 μ g) from various cell lines were loaded and separated by SDS-PAGE. The blot was incubated with anti-NEK6 antibody (Cat#4659, 1:5,000) and HRP-conjugated goat anti-rabbit secondary antibody (Cat#201, 1:20,000) respectively. Image was developed using NaQ™ ECL Substrate Kit (Cat#716).

SUPPORT

SUPPORT@GENUINBIOTECH.COM
TEL: +1-540-855-7041

ORDERS

SALES@GENUINBIOTECH.COM
FAX: +1-540-855-7041

WWW.GENUINBIOTECH.COM