

Anti-Dihydrolipoamide dehydrogenase Recombinant Rabbit Monoclonal Antibody



Catalog #: 4662

Aliases

DLD; Dihydrolipoamide Dehydrogenase; OGDC-E3; DLDH; GCSL; LAD; E3; E3 Component Of Pyruvate Dehydrogenase Complex, 2-Oxo-Glutarate Complex, Branched Chain Keto Acid Dehydrogenase Complex; Dihydrolipoyl Dehydrogenase, Mitochondrial; Glycine Cleavage System L Protein; EC 1.8.1.4; PHE3; Dihydrolipoamide Dehydrogenase (E3 Component Of Pyruvate Dehydrogenase Complex, 2-Oxo-Glutarate Complex, Branched Chain Keto Acid Dehydrogenase Complex); Epididymis Secretory Sperm Binding Protein; Glycine Cleavage System Protein L; Lipoamide Dehydrogenase; Lipoyl Dehydrogenase; Lipoamide Reductase; Diaphorase; EC 1.8.1.48; DLDD

Background

Gene Name: DLD

NCBI Gene Entry: [1738](#)

UniProt Entry: [P09622](#)

Application Information

Molecular Weight: Predicted, 54 kDa; observed, 56 kDa

Clonality: Rabbit monoclonal antibody

Clone ID: 24GB12320

Species Reactivity: Human, mouse, rat

Applications Tested: Western blotting (WB), flow cytometry (FCM), immunocytochemistry (IC)

Immunogen

A synthesized peptide derived from human DLDH

Isotype

Rabbit IgG

Storage Buffer

Supplied in PBS (pH 7.4) containing 50% glycerol, and 0.02% sodium azide.

Storage

Store at -20 °C for one year.

Recommended Dilutions

Western Blotting (WB): 1:1,000-1:5,000

SUPPORT

SUPPORT@GENUINBIOTECH.COM
TEL: +1-540-855-7041

ORDERS

SALES@GENUINBIOTECH.COM
FAX: +1-540-855-7041

WWW.GENUINBIOTECH.COM

Anti-Dihydrolipoamide dehydrogenase Recombinant Rabbit Monoclonal Antibody

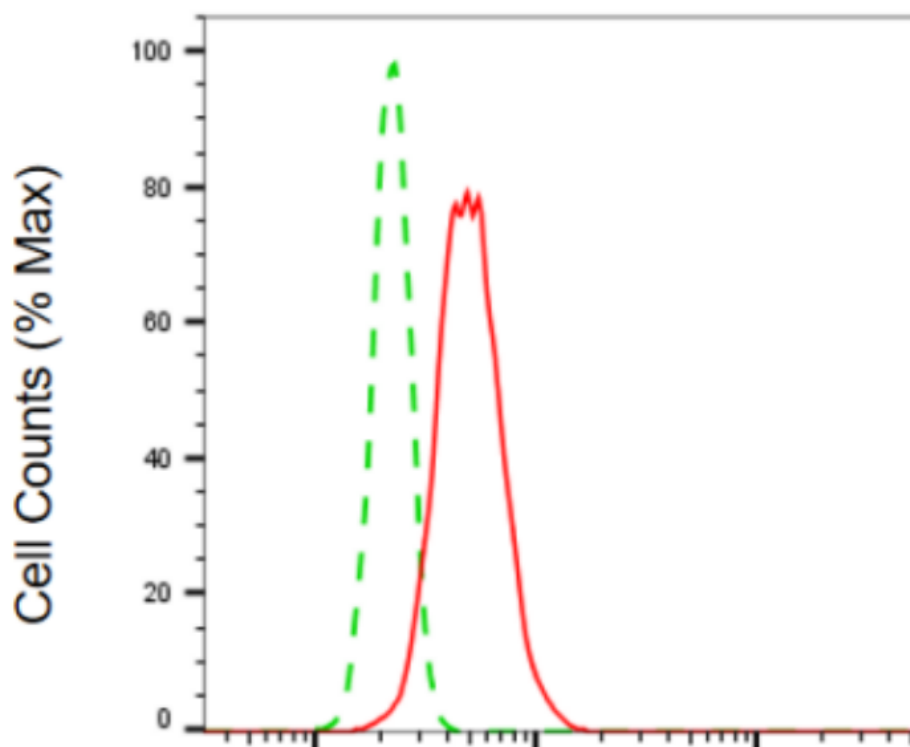
PAGE 2

Flow Cytometry (FCM): 1:2,000

Immunocytochemistry (IC): 1:100-1:1,000

Note: This product is for research use only.

Validation Data



Copyright ©2024 Genuin Biotechnologies LLC

Dihydrolipoamide dehydrogenase-Alexa Fluor® 647

Flow cytometric analysis of dihydrolipoamide dehydrogenase expression in HT-1080 cells using anti-dihydrolipoamide dehydrogenase antibody (Cat#4662, 1:2,000). Green, isotype control; red, dihydrolipoamide dehydrogenase.

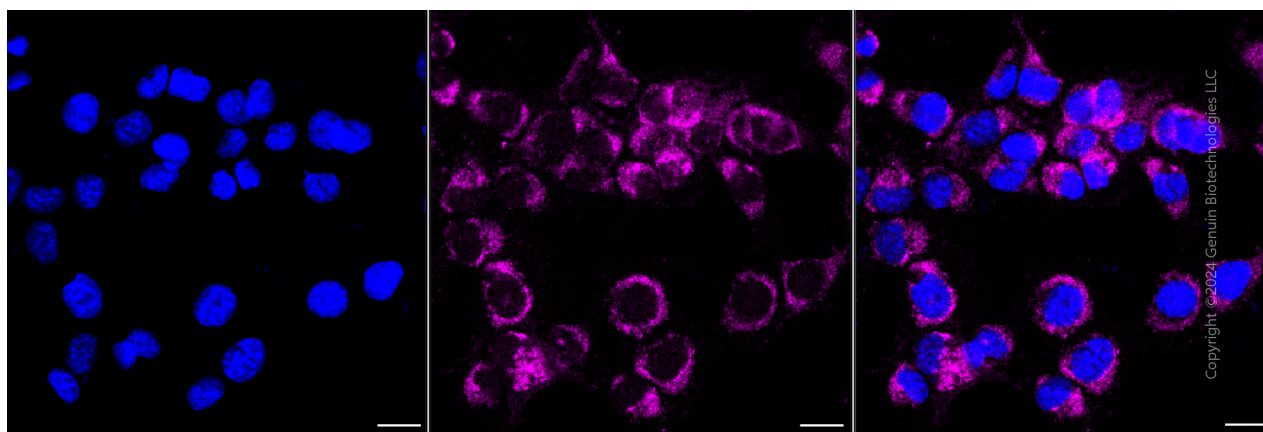
SUPPORT

SUPPORT@GENUINBIOTECH.COM
TEL: +1-540-855-7041

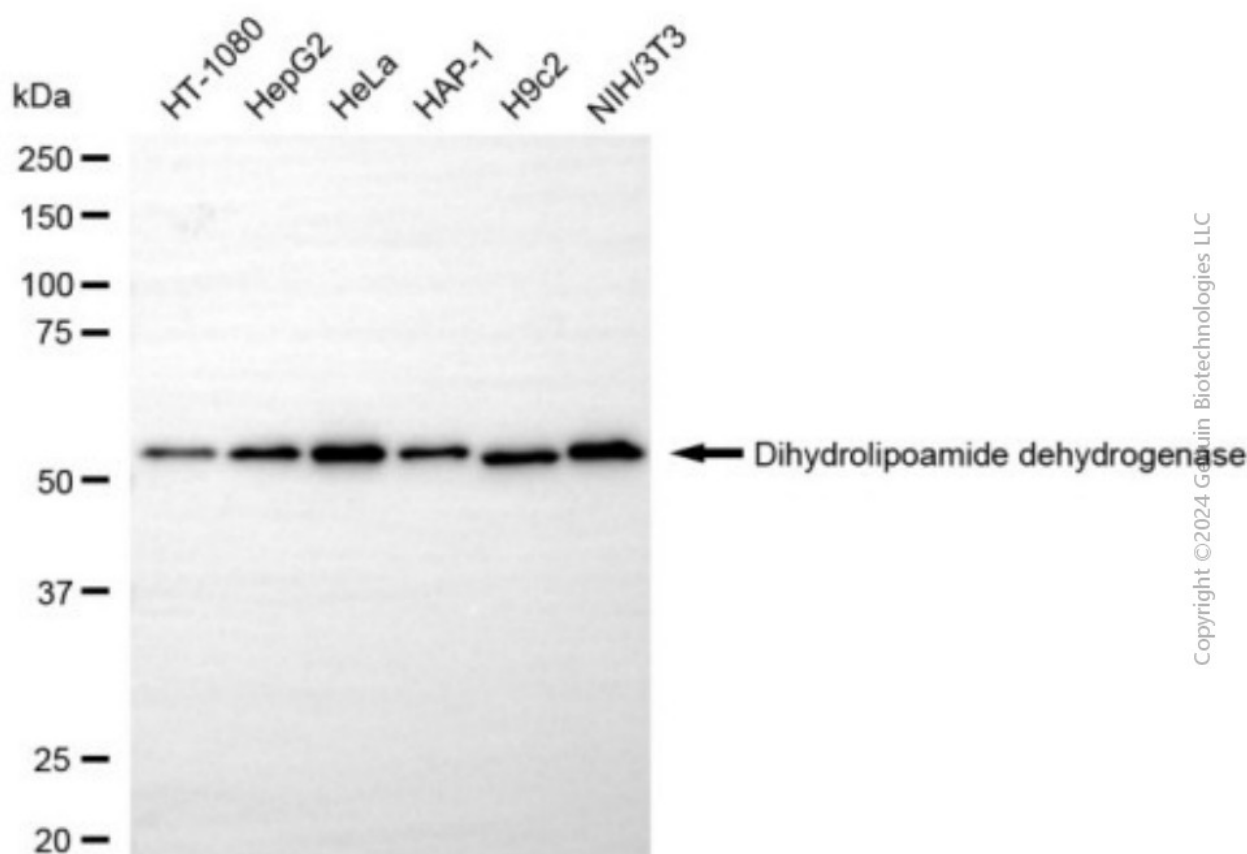
ORDERS

SALES@GENUINBIOTECH.COM
FAX: +1-540-855-7041

WWW.GENUINBIOTECH.COM



Immunocytochemical staining of HT-1080 cells with anti-dihydrolipoamide dehydrogenase antibody (Cat#4662, 1:1,000). Nuclei were stained blue with DAPI; Dihydrolipoamide dehydrogenase was stained magenta with Alexa Fluor® 647. Images were taken using Leica stellaris 5. Protein abundance based on laser Intensity and smart gain: Medium. Scale bar, 20 μ m.



Western blotting analysis using anti-dihydrolipoamide dehydrogenase antibody (Cat#4662). Total cell lysates (30 μ g) from various cell lines were loaded and separated by SDS-PAGE. The blot was incubated with anti-dihydrolipoamide dehydrogenase antibody (Cat#4662, 1:5,000) and HRP-conjugated goat anti-rabbit secondary antibody (Cat#201, 1:20,000) respectively. Image was

Anti-Dihydrolipoamide dehydrogenase Recombinant Rabbit Monoclonal Antibody

PAGE 4

developed using NaQ™ ECL Substrate Kit (Cat#716).

SUPPORT

SUPPORT@GENUINBIOTECH.COM
TEL: +1-540-855-7041

ORDERS

SALES@GENUINBIOTECH.COM
FAX: +1-540-855-7041

WWW.GENUINBIOTECH.COM