

Anti-Rho GTPase activating protein 5 Recombinant Rabbit Monoclonal Antibody



Catalog #: 4663

Aliases

ARHGAP5; Rho GTPase Activating Protein 5; P190-B; Rho-Type GTPase-Activating Protein 5; Rho GTPase-Activating Protein 5; Growth Factor Independent 2; P190BRhoGAP; RhoGAP5; RHOGAP5; GFI2; P100 RasGAP-Associated P105 Protein; P105 RhoGAP; P190BRHOGAP

Background

Gene Name: ARHGAP5

NCBI Gene Entry: [394](#)

UniProt Entry: [Q13017](#)

Application Information

Molecular Weight: Predicted, 172 kDa; observed, 190 kDa

Clonality: Rabbit monoclonal antibody

Clone ID: 24GB12325

Species Reactivity: Human, mouse, rat

Applications Tested: Western blotting (WB), flow cytometry (FCM), immunocytochemistry (IC)

Immunogen

A synthesized peptide derived from human RhoGAP

Isotype

Rabbit IgG

Storage Buffer

Supplied in PBS (pH 7.4) containing 50% glycerol, and 0.02% sodium azide.

Storage

Store at -20 °C for one year.

Recommended Dilutions

Western Blotting (WB): 1:1,000-1:5,000

Flow Cytometry (FCM): 1:2,000

Immunocytochemistry (IC): 1:100-1:1,000

Note: This product is for research use only.

SUPPORT

SUPPORT@GENUINBIOTECH.COM
TEL: +1-540-855-7041

ORDERS

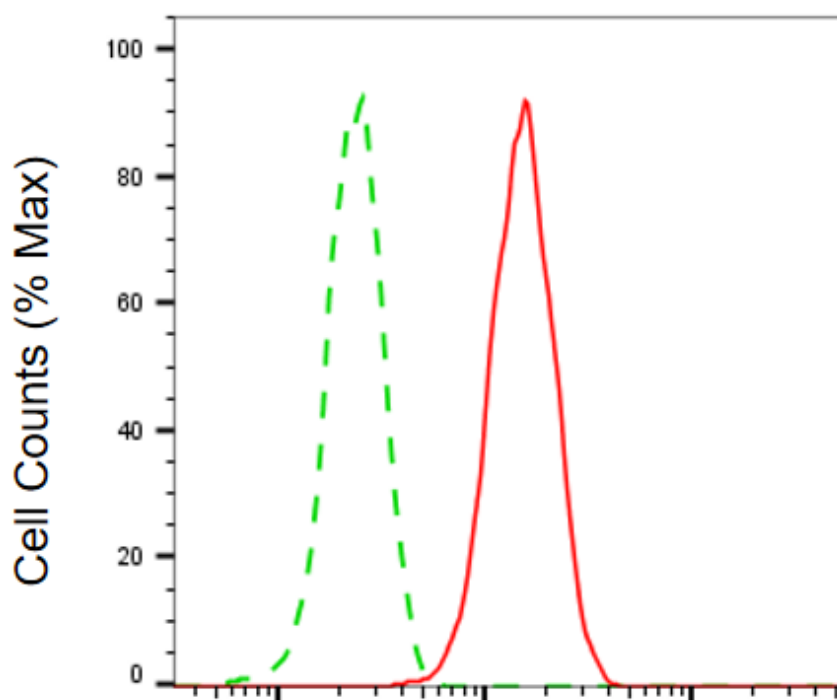
SALES@GENUINBIOTECH.COM
FAX: +1-540-855-7041

WWW.GENUINBIOTECH.COM

Anti-Rho GTPase activating protein 5 Recombinant Rabbit Monoclonal Antibody

PAGE 2

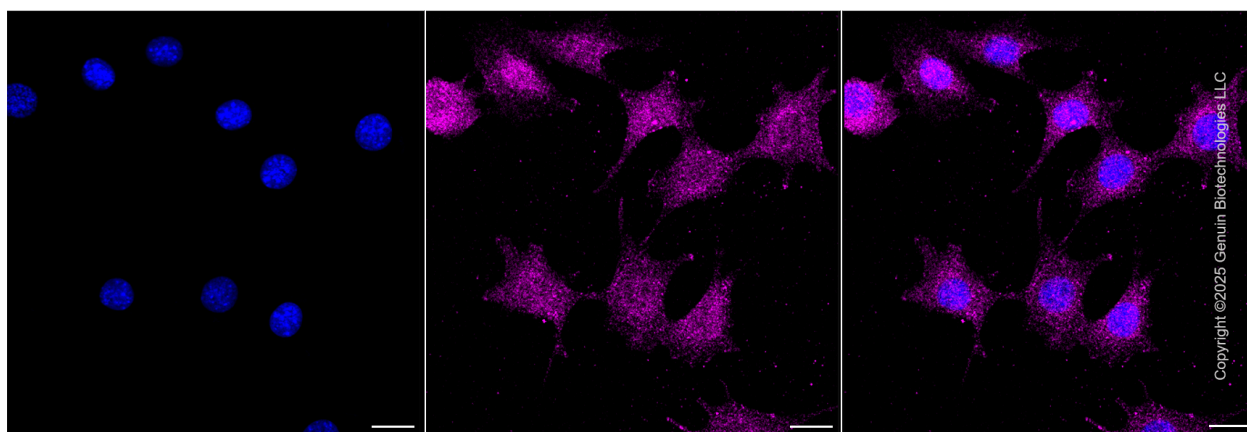
Validation Data



Copyright ©2025 Genuin Biotechnologies LLC

Rho GTPase activating protein 5-Alexa Fluor® 647

Flow cytometric analysis of Rho GTPase activating protein 5 expression in C2C12 cells using anti-Rho GTPase activating protein 5 antibody (Cat#4663, 1:2,000). Green, isotype control; red, Rho GTPase activating protein 5.



Copyright ©2025 Genuin Biotechnologies LLC

Immunocytochemical staining of C2C12 cells with anti-Rho GTPase activating protein 5 antibody (Cat#4663, 1:1,000). Nuclei were stained blue with DAPI; Rho GTPase activating protein 5 was stained magenta with Alexa Fluor® 647. Images were taken using Leica stellaris 5. Protein

SUPPORT

SUPPORT@GENUINBIOTECH.COM
TEL: +1-540-855-7041

ORDERS

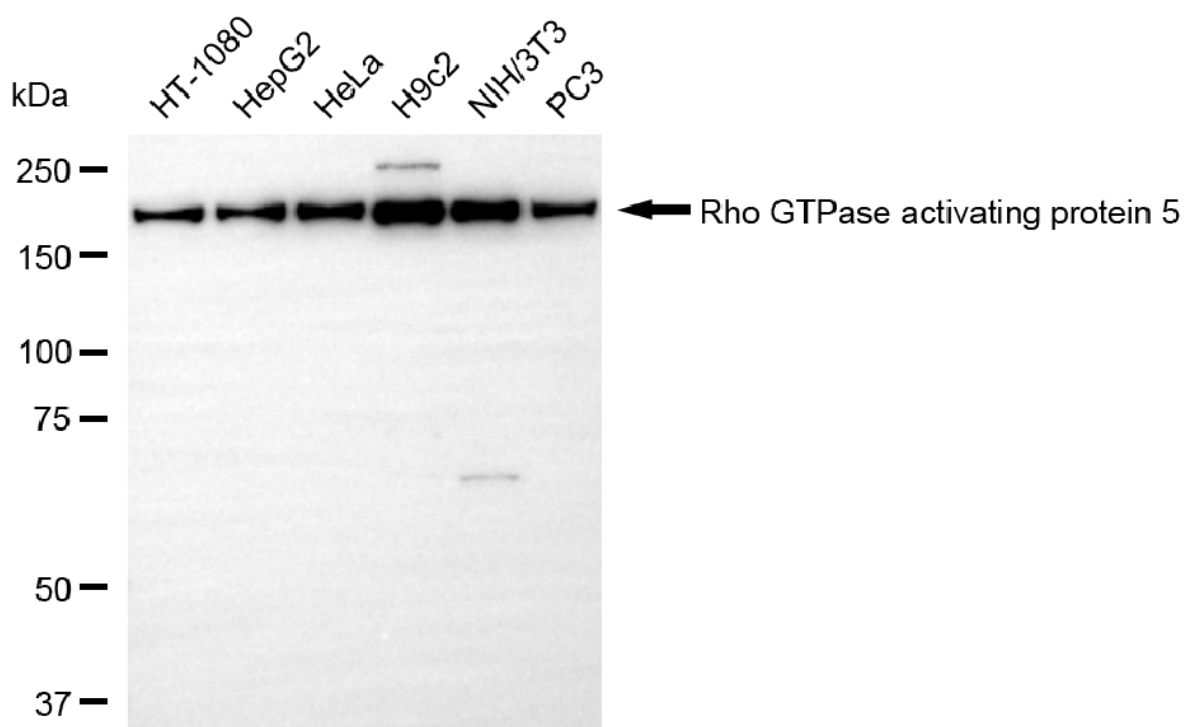
SALES@GENUINBIOTECH.COM
FAX: +1-540-855-7041

WWW.GENUINBIOTECH.COM

Anti-Rho GTPase activating protein 5 Recombinant Rabbit Monoclonal Antibody

PAGE 3

abundance based on laser Intensity and smart gain: Medium. Scale bar, 20 μ m.



Western blotting analysis using anti-Rho GTPase activating protein 5 antibody (Cat#4663). Total cell lysates (30 μ g) from various cell lines were loaded and separated by SDS-PAGE. The blot was incubated with anti-Rho GTPase activating protein 5 antibody (Cat#4663, 1:5,000) and HRP-conjugated goat anti-rabbit secondary antibody (Cat#201, 1:20,000) respectively. Image was developed using NaQ™ ECL Substrate Kit (Cat#716).

SUPPORT

SUPPORT@GENUINBIOTECH.COM
TEL: +1-540-855-7041

ORDERS

SALES@GENUINBIOTECH.COM
FAX: +1-540-855-7041

WWW.GENUINBIOTECH.COM