

Anti-Phospholipase A2 activating protein Recombinant Rabbit Monoclonal Antibody



Catalog #: 4664

Aliases

PLAA; Phospholipase A2 Activating Protein; PLA2P; PLAP; DOA1; Phospholipase A-2-Activating Protein; FLJ11281; FLJ12699; DOA1 Homolog (S. Cerevisiae); DOA1 Homolog; NDMSBA

Background

Gene Name: PLAA

NCBI Gene Entry: [9373](#)

UniProt Entry: [Q9Y263](#)

Application Information

Molecular Weight: Predicted, 87 kDa; observed, 75 kDa

Clonality: Rabbit monoclonal antibody

Clone ID: 24GB12330

Species Reactivity: Human

Applications Tested: Western blotting (WB), flow cytometry (FCM), immunocytochemistry (IC)

Immunogen

A synthesized peptide derived from human PLAP

Isotype

Rabbit IgG

Storage Buffer

Supplied in PBS (pH 7.4) containing 50% glycerol, and 0.02% sodium azide.

Storage

Store at -20 °C for one year.

Recommended Dilutions

Western Blotting (WB): 1:1,000-1:5,000

Flow Cytometry (FCM): 1:2,000

Immunocytochemistry (IC): 1:100-1:1,000

Note: This product is for research use only.

SUPPORT

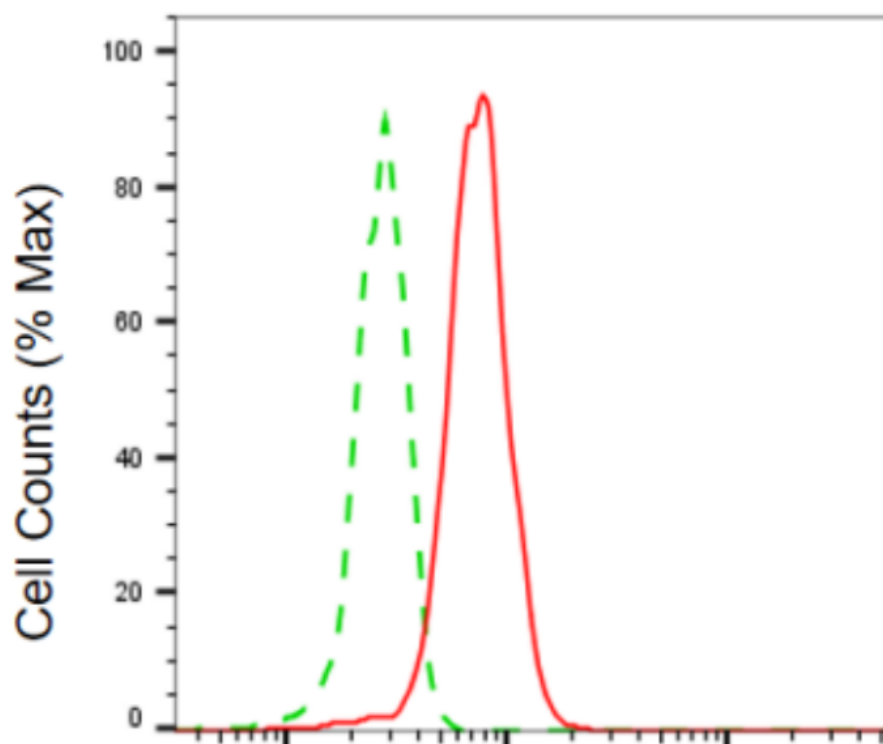
SUPPORT@GENUINBIOTECH.COM
TEL: +1-540-855-7041

ORDERS

SALES@GENUINBIOTECH.COM
FAX: +1-540-855-7041

WWW.GENUINBIOTECH.COM

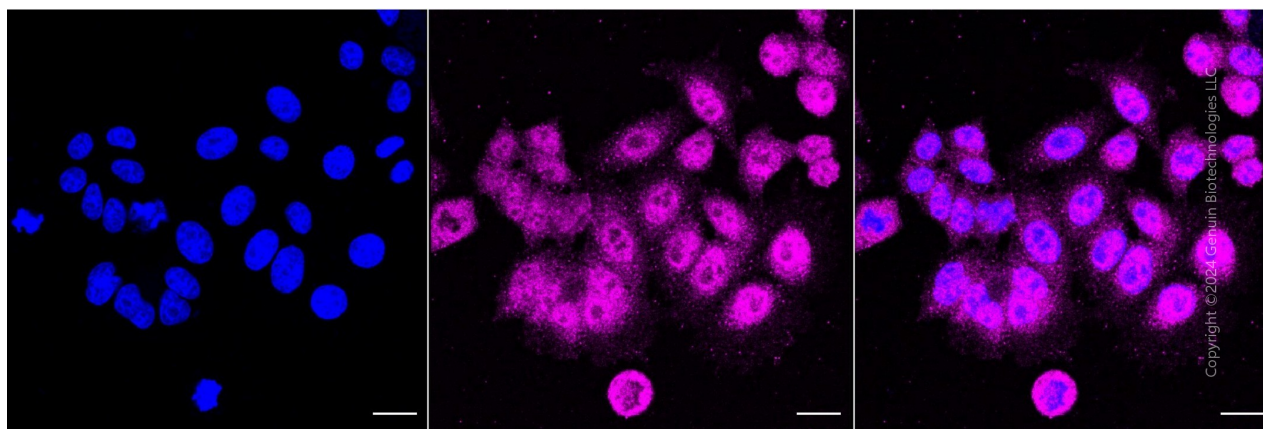
Validation Data



Copyright ©2024 Genuin Biotechnologies LLC

Phospholipase A2 activating protein-Alexa Fluor® 647

Flow cytometric analysis of phospholipase A2 activating protein expression in HepG2 cells using anti-phospholipase A2 activating protein antibody (Cat#4664, 1:2,000). Green, isotype control; red, phospholipase A2 activating protein.



Copyright ©2024 Genuin Biotechnologies LLC

Immunocytochemical staining of HepG2 cells with anti-Phospholipase A2 activating protein antibody (Cat#4664, 1:1,000). Nuclei were stained blue with DAPI; Phospholipase A2 activating protein was stained magenta with Alexa Fluor® 647. Images were taken using Leica stellaris 5.

SUPPORT

SUPPORT@GENUINBIOTECH.COM
TEL: +1-540-855-7041

ORDERS

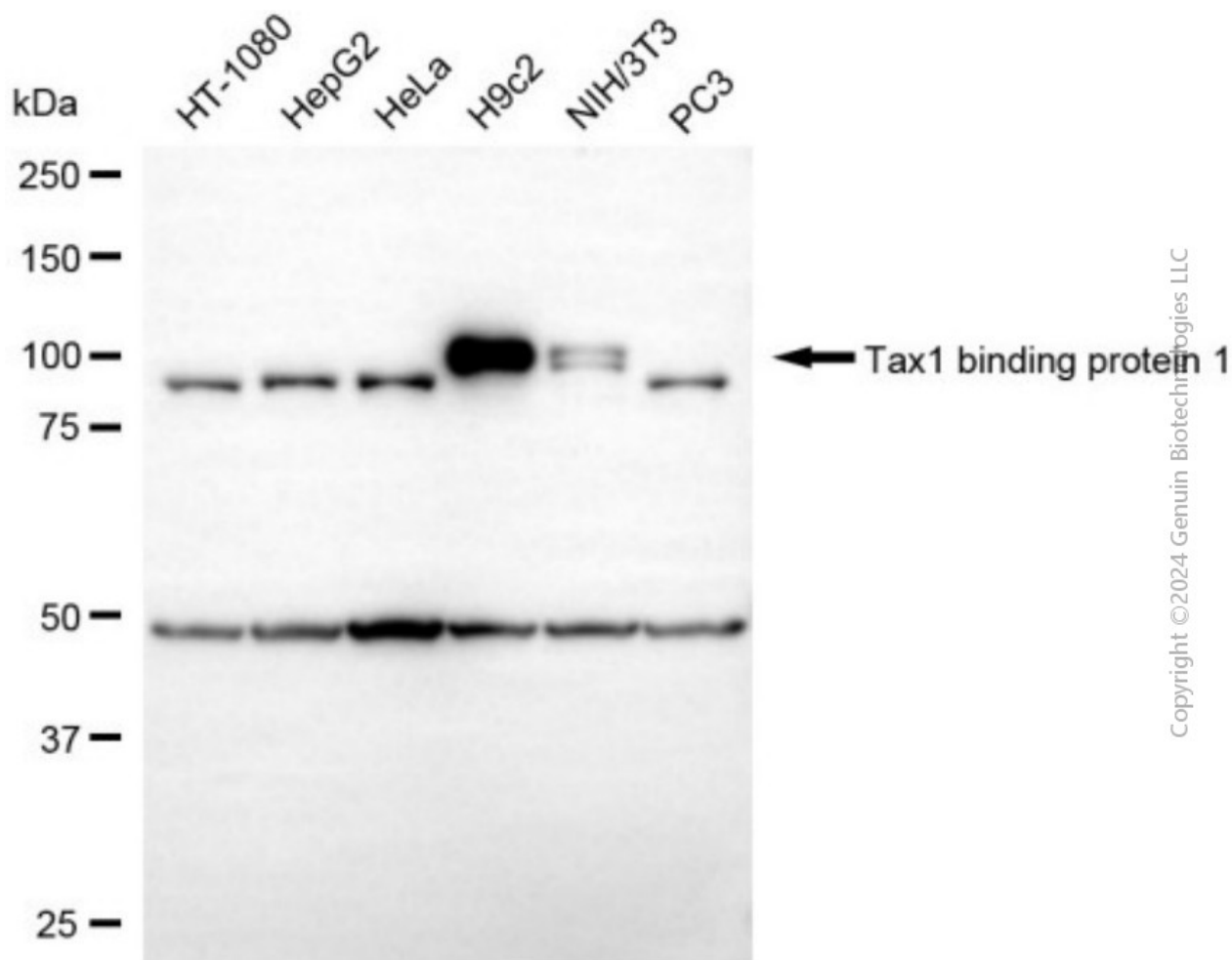
SALES@GENUINBIOTECH.COM
FAX: +1-540-855-7041

WWW.GENUINBIOTECH.COM

Anti-Phospholipase A2 activating protein Recombinant Rabbit Monoclonal Antibody

PAGE 3

Protein abundance based on laser Intensity and smart gain: Medium. Scale bar, 20 μ m.



Copyright ©2024 Genuin Biotechnologies LLC

Western blotting analysis using anti-phospholipase A2 activating protein antibody (Cat#4664). Total cell lysates (30 μ g) from various cell lines were loaded and separated by SDS-PAGE. The blot was incubated with anti-phospholipase A2 activating protein antibody (Cat#4664, 1:5,000) and HRP-conjugated goat anti-rabbit secondary antibody (Cat#201, 1:20,000) respectively. Image was developed using NaQ™ ECL Substrate Kit (Cat#716).

SUPPORT

SUPPORT@GENUINBIOTECH.COM
TEL: +1-540-855-7041

ORDERS

SALES@GENUINBIOTECH.COM
FAX: +1-540-855-7041

WWW.GENUINBIOTECH.COM