

# Anti-Fibroblast Growth Factor 2 Rabbit Monoclonal Antibody



**Catalog #: 4667**

## Aliases

FGF2; Fibroblast Growth Factor 2; FGFB; Fibroblast Growth Factor 2 (Basic); Heparin-Binding Growth Factor 2; HBGF-2; FGF-2; BFGF; Basic Fibroblast Growth Factor BFGF; Basic Fibroblast Growth Factor; Prostatropin

## Background

Gene Name: FGF2

NCBI Gene Entry: [2247](#)

UniProt Entry: [P09038](#)

## Application Information

Molecular Weight: Predicted, 31 kDa; observed, 18-24 kDa

Clonality: Rabbit monoclonal antibody

Clone ID: 24GB12345

Species Reactivity: Human, rat

Applications Tested: Western blotting (WB), flow cytometry (FCM), immunocytochemistry (IC)

## Immunogen

Recombinant protein of human FGF2

## Isotype

Rabbit IgG

## Storage Buffer

Supplied in PBS (pH 7.4) containing 50% glycerol, and 0.02% sodium azide.

## Storage

Store at -20 °C for one year.

## Recommended Dilutions

Western Blotting (WB): 1:1,000-1:5,000

Flow Cytometry (FCM): 1:2,000

Immunocytochemistry (IC): 1:100-1:1,000

**Note:** This product is for research use only.

---

### SUPPORT

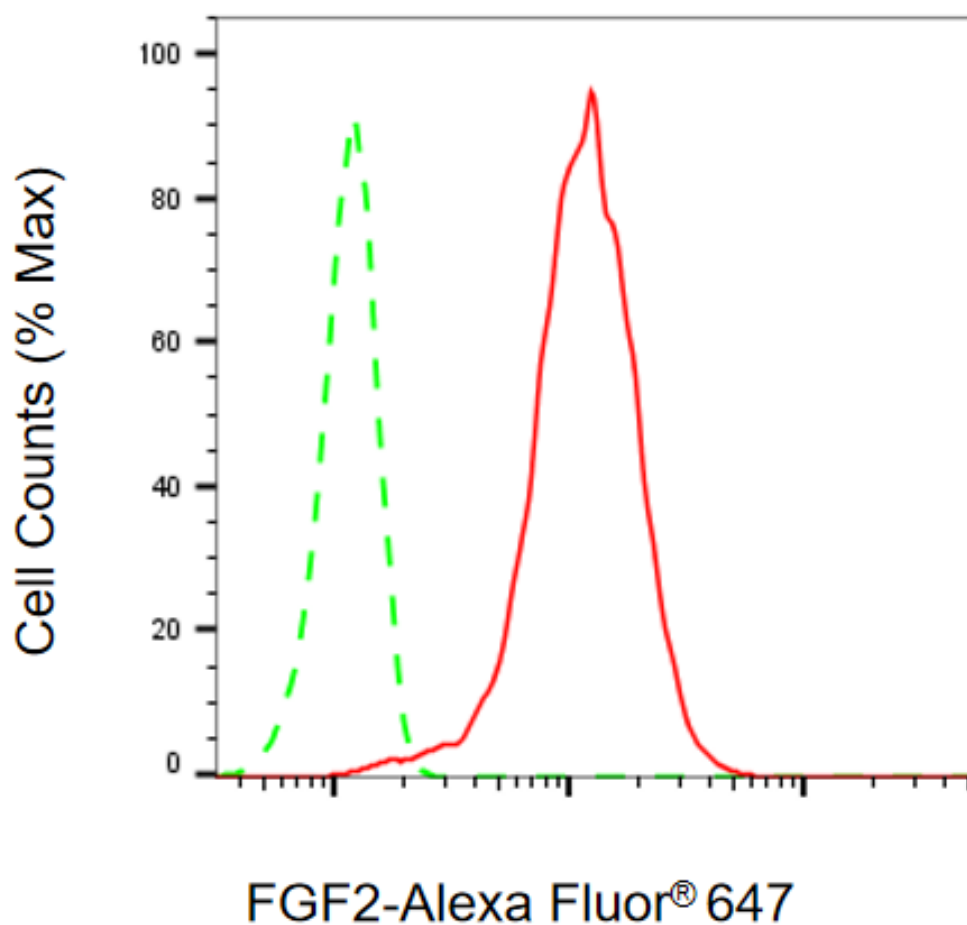
SUPPORT@GENUINBIOTECH.COM  
TEL: +1-540-855-7041

### ORDERS

SALES@GENUINBIOTECH.COM  
FAX: +1-540-855-7041

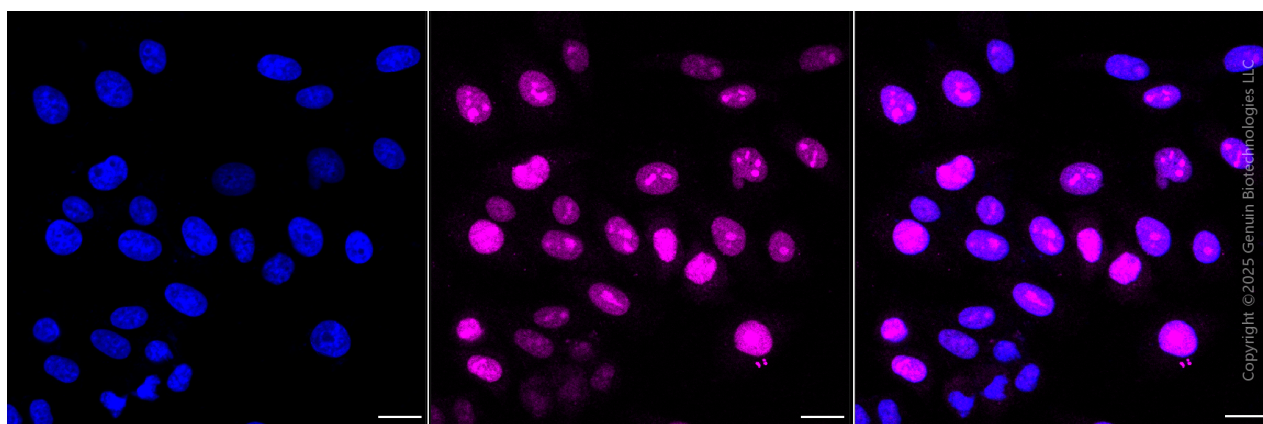
[WWW.GENUINBIOTECH.COM](http://WWW.GENUINBIOTECH.COM)

**Validation Data**



Copyright ©2025 Genuin Biotechnologies LLC

Flow cytometric analysis of FGF2 expression in HepG2 cells using anti-FGF2 antibody (Cat#4667, 1:2,000). Green, isotype control; red, FGF2.



Immunocytochemical staining of HepG2 cells with anti-FGF2 antibody (Cat#4667, 1:1,000). Nuclei were stained blue with DAPI; FGF2 was stained magenta with Alexa Fluor® 647. Images

**SUPPORT**

SUPPORT@GENUINBIOTECH.COM  
TEL: +1-540-855-7041

**ORDERS**

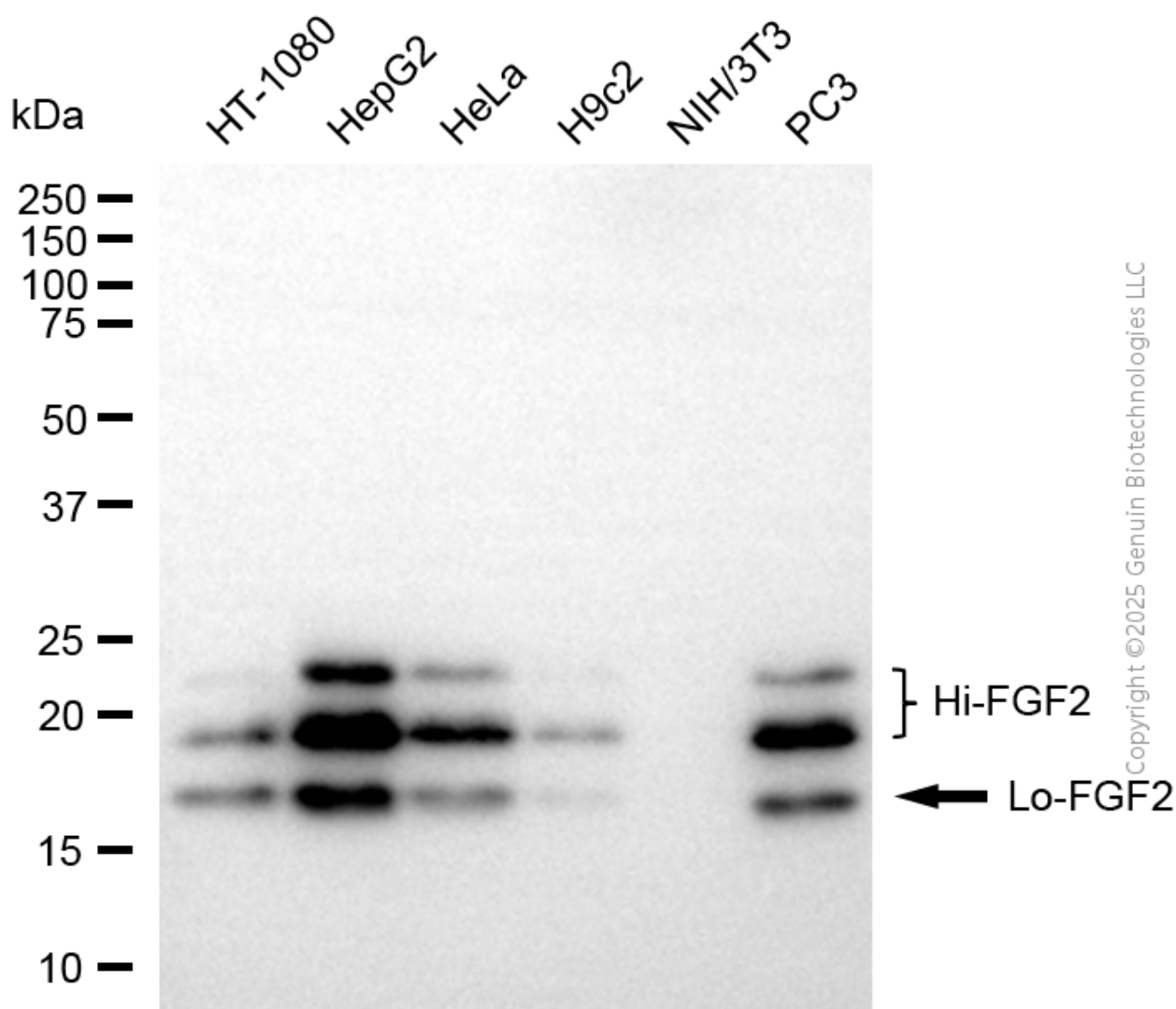
SALES@GENUINBIOTECH.COM  
FAX: +1-540-855-7041

**WWW.GENUINBIOTECH.COM**

## Anti-Fibroblast Growth Factor 2 Rabbit Monoclonal Antibody

PAGE 3

were taken using Leica stellaris 5. Protein abundance based on laser Intensity and smart gain: Medium. Scale bar, 20  $\mu$ m.



Western blotting analysis using anti-FGF2 antibody (Cat#4667). Total cell lysates (30  $\mu$ g) from various cell lines were loaded and separated by SDS-PAGE. The blot was incubated with anti-FGF2 antibody (Cat#4667, 1:5,000) and HRP-conjugated goat anti-rabbit secondary antibody (Cat#201, 1:20,000) respectively. Image was developed using FeQ<sup>TM</sup> ECL Substrate Kit (Cat#226).

### SUPPORT

SUPPORT@GENUINBIOTECH.COM  
TEL: +1-540-855-7041

### ORDERS

SALES@GENUINBIOTECH.COM  
FAX: +1-540-855-7041

WWW.GENUINBIOTECH.COM