

## Catalog #: 4671

### Aliases

CRABP2; Cellular Retinoic Acid Binding Protein 2; CRABP-II; Cellular Retinoic Acid-Binding Protein 2; Cellular Retinoic Acid-Binding Protein II; RBP6

### Background

Gene Name: CRABP2

NCBI Gene Entry: [1382](#)

UniProt Entry: [P29373](#)

### Application Information

Molecular Weight: Predicted, 16 kDa; observed, 16 kDa

Clonality: Rabbit monoclonal antibody

Clone ID: 24GB12365

Species Reactivity: Human

Applications Tested: Western blotting (WB), flow cytometry (FCM), immunocytochemistry (IC)

### Immunogen

Recombinant protein of human CRABP2

### Isotype

Rabbit IgG

### Storage Buffer

Supplied in PBS (pH 7.4) containing 50% glycerol, and 0.02% sodium azide.

### Storage

Store at -20 °C for one year.

### Recommended Dilutions

Western Blotting (WB): 1:1,000-1:5,000

Immunocytochemistry (IC): 1:100-1:1,000

Flow Cytometry (FCM): 1:2,00

**Note:** This product is for research use only.

### Validation Data

---

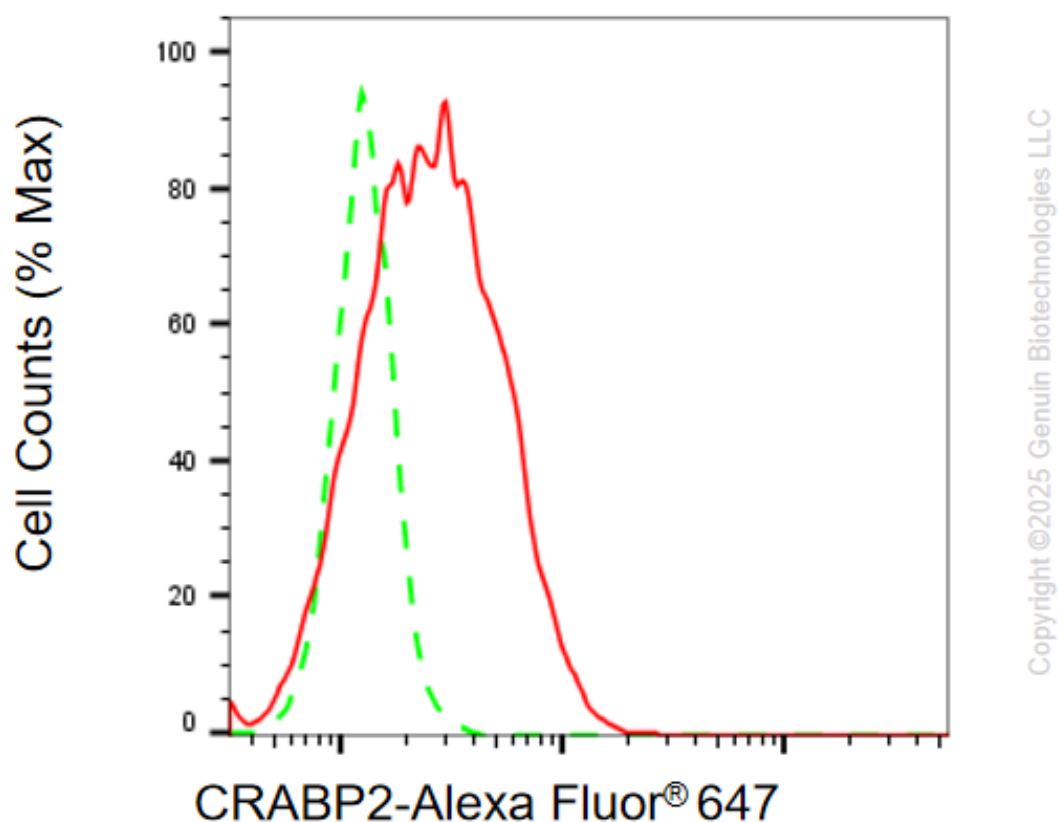
#### SUPPORT

SUPPORT@GENUINBIOTECH.COM  
TEL: +1-540-855-7041

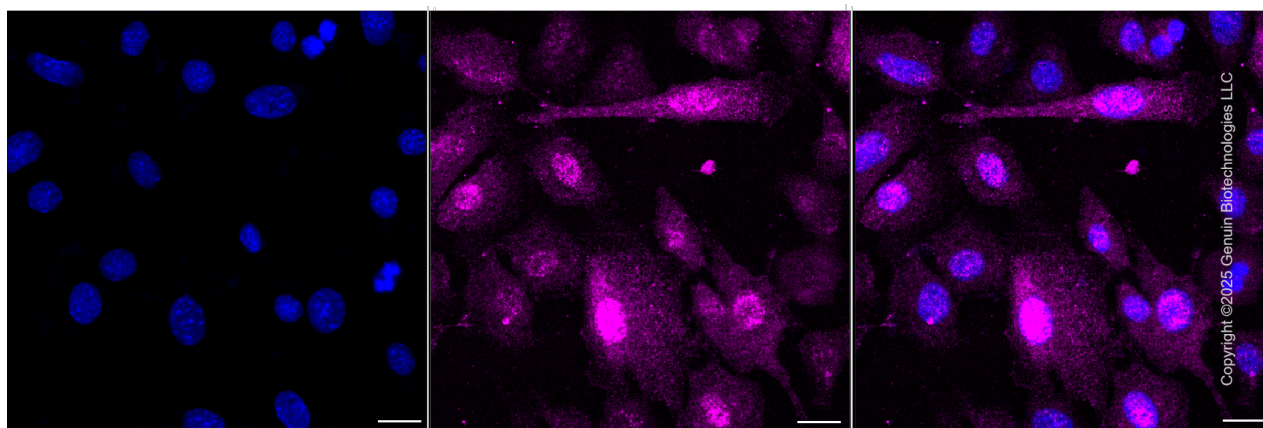
#### ORDERS

SALES@GENUINBIOTECH.COM  
FAX: +1-540-855-7041

[WWW.GENUINBIOTECH.COM](http://WWW.GENUINBIOTECH.COM)



Flow cytometric analysis of CRABP2 expression in C2C12 cells using anti-CRABP2 antibody (Cat#4671, 1:2,000). Green, isotype control; red, CRABP2.



Immunocytochemical staining of C2C12 cells with anti-CRABP2 antibody (Cat#4671, 1:1,000). Nuclei were stained blue with DAPI; CRABP2 was stained magenta with Alexa Fluor® 647. Images were taken using Leica stellaris 5. Protein abundance based on laser Intensity and Smart Gain: Medium. Scale bar, 20  $\mu$ m.

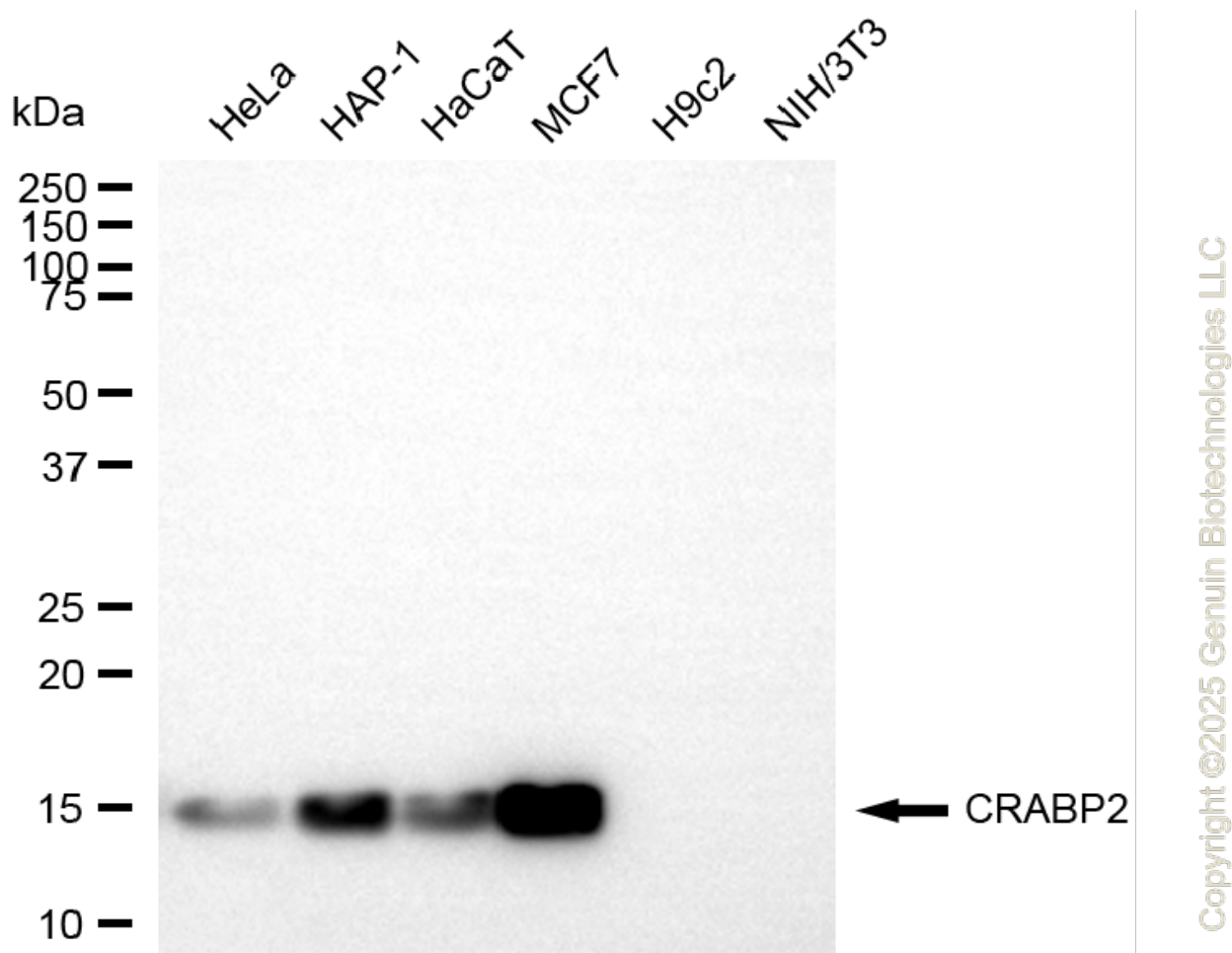
**SUPPORT**

SUPPORT@GENUINBIOTECH.COM  
TEL: +1-540-855-7041

**ORDERS**

SALES@GENUINBIOTECH.COM  
FAX: +1-540-855-7041

[WWW.GENUINBIOTECH.COM](http://WWW.GENUINBIOTECH.COM)



Western blotting analysis using anti-CRABP2 antibody (Cat#4671). Total cell lysates (30  $\mu$ g) from various cell lines were loaded and separated by SDS-PAGE. The blot was incubated with anti-CRABP2 antibody (Cat#4671, 1:5,000) and HRP-conjugated goat anti-rabbit secondary antibody (Cat#201, 1:20,000) respectively. Image was developed using NaQ™ ECL Substrate Kit (Cat#716).

**SUPPORT**

SUPPORT@GENUINBIOTECH.COM  
TEL: +1-540-855-7041

**ORDERS**

SALES@GENUINBIOTECH.COM  
FAX: +1-540-855-7041

[WWW.GENUINBIOTECH.COM](http://WWW.GENUINBIOTECH.COM)