

Anti-Integrin alpha V Rabbit Monoclonal Antibody



Catalog #: 4672

Aliases

ITGAV; Integrin Subunit Alpha V; CD51; MSK8; VNRA; VTNR; Integrin, Alpha V (Vitronectin Receptor, Alpha Polypeptide, Antigen CD51); Antigen Identified By Monoclonal Antibody L230; Vitronectin Receptor Subunit Alpha; Vitronectin Receptor; Integrin Alpha-V; Integrin AlphaVbeta3; Integrin, Alpha V; CD51 Antigen

Background

Gene Name: ITGAV

NCBI Gene Entry: [3685](#)

UniProt Entry: [P06756](#)

Application Information

Molecular Weight: Predicted, 116 kDa; observed, 130 kDa

Clonality: Rabbit monoclonal antibody

Clone ID: 24GB12370

Species Reactivity: Human, mouse, rat

Applications Tested: Western blotting (WB), flow cytometry (FCM), immunocytochemistry (IC)

Immunogen

Recombinant protein of human Integrin alpha V

Isotype

Rabbit IgG

Storage Buffer

Supplied in PBS (pH 7.4) containing 50% glycerol, and 0.02% sodium azide.

Storage

Store at -20 °C for one year.

Recommended Dilutions

Western Blotting (WB): 1:1,000-1:5,000

Flow Cytometry (FCM): 1:2,000

Immunocytochemistry (IC): 1:100-1:1,000

SUPPORT

SUPPORT@GENUINBIOTECH.COM
TEL: +1-540-855-7041

ORDERS

SALES@GENUINBIOTECH.COM
FAX: +1-540-855-7041

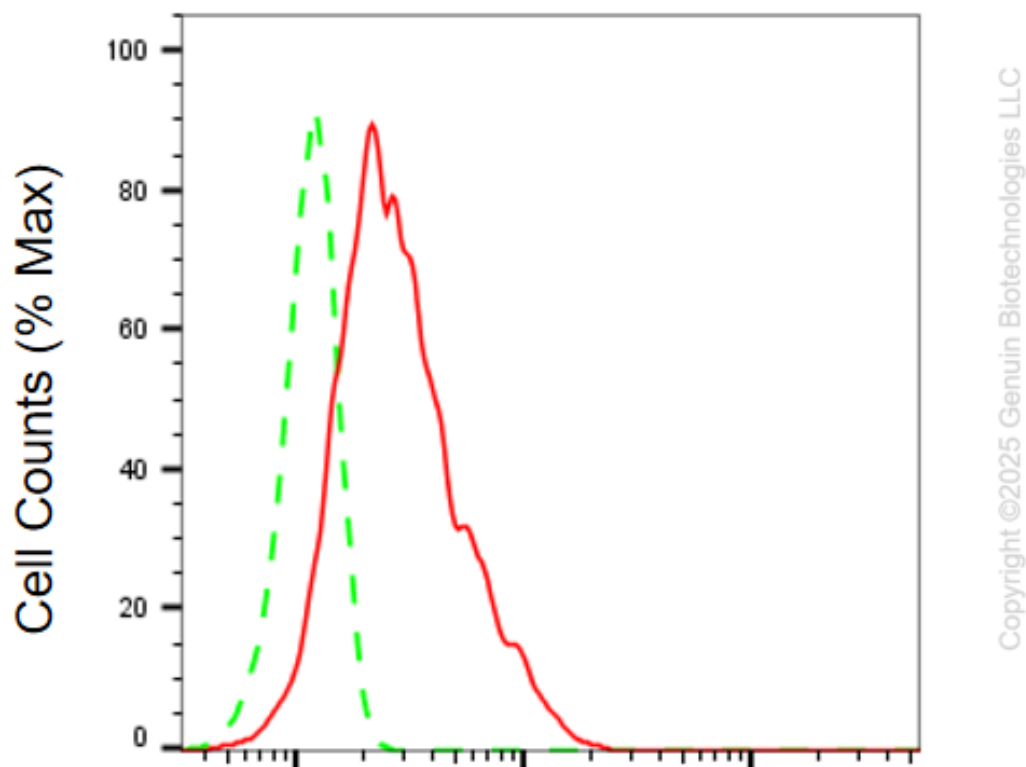
WWW.GENUINBIOTECH.COM

Anti-Integrin alpha V Rabbit Monoclonal Antibody

PAGE 2

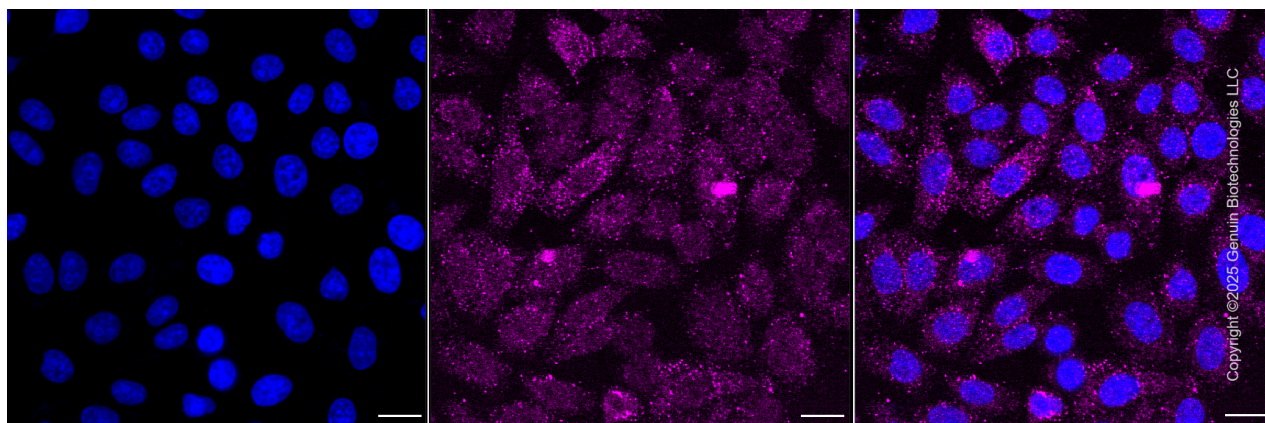
Note: This product is for research use only.

Validation Data



Integrin subunit alpha V-Alexa Fluor® 647

Flow cytometric analysis of Integrin subunit alpha V expression in HepG2 cells using anti-Integrin subunit alpha V antibody (Cat#4672, 1:2,000). Green, isotype control; red, Integrin subunit alpha V.



SUPPORT

SUPPORT@GENUINBIOTECH.COM
TEL: +1-540-855-7041

ORDERS

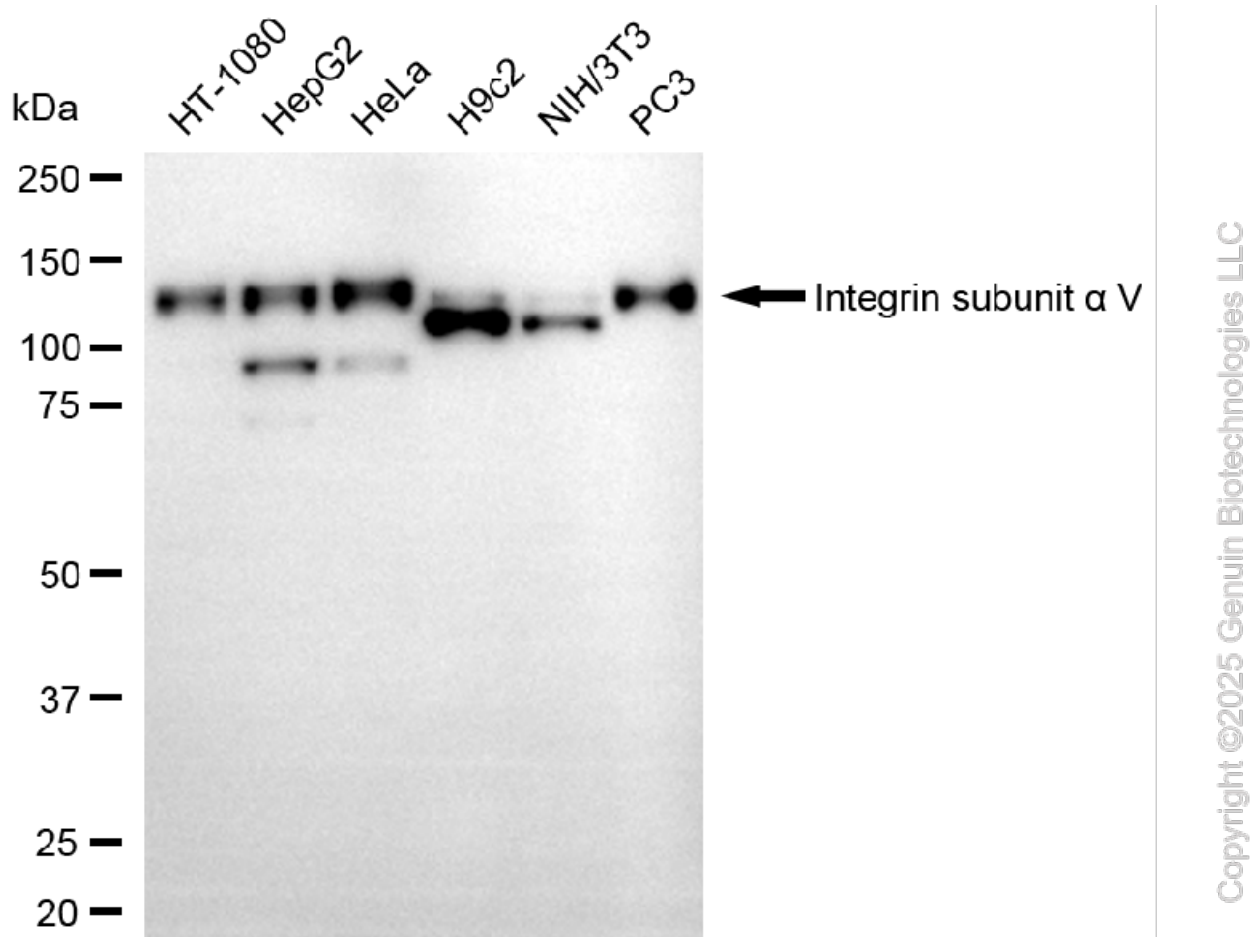
SALES@GENUINBIOTECH.COM
FAX: +1-540-855-7041

WWW.GENUINBIOTECH.COM

Anti-Integrin alpha V Rabbit Monoclonal Antibody

PAGE 3

Immunocytochemical staining of HepG2 cells with anti-Integrin subunit alpha V antibody (Cat#4672, 1:1,000). Nuclei were stained blue with DAPI; Integrin subunit alpha V was stained magenta with Alexa Fluor® 647. Images were taken using Leica stellaris 5. Protein abundance based on laser Intensity and smart gain: Low. Scale bar, 20 μ m.



Western blotting analysis using anti-integrin subunit alpha V antibody (Cat#4672). Total cell lysates (30 μ g) from various cell lines were loaded and separated by SDS-PAGE. The blot was incubated with anti-integrin subunit alpha V antibody (Cat#4672, 1:5,000) and HRP-conjugated goat anti-rabbit secondary antibody (Cat#201, 1:20,000) respectively. Image was developed using FeQ™ ECL Substrate Kit (Cat#226).

SUPPORT

SUPPORT@GENUINBIOTECH.COM
TEL: +1-540-855-7041

ORDERS

SALES@GENUINBIOTECH.COM
FAX: +1-540-855-7041

WWW.GENUINBIOTECH.COM